



## Salford City Council Boothstown & Ellenbrook Ward Profile

This ward profile is one of a series of 20 that provides an overview of major issues within Salford. The ward is highlighted in the map on the front page. The profile is based on statistical information available to the council from a range of sources including the 2001 Census and the 2007 Index of Deprivation. The profile looks at situations in the ward in relation to the rest of the city, the region and the country.

The data was compiled by;  
Information & Research Group,  
Spatial Planning Section  
Sustainable Regeneration Directorate  
Salford City Council  
Salford Civic Centre,  
Chorley Road, Swinton M27 5BY

Maps are reproduced from Ordnance Survey under licence No. 100019737.2009

© The information may be reproduced subject to crown copyright rules.

Salford's wards were revised in 2004. Census data in this report relates to new wards and has been compiled using rebased 2001 Census data. Rebased data uses proportioned Output Area level data and not the individual source returns. All the information in the profile is for new wards.

In the 2001 Census very small numbers were masked for confidentiality. In some tables numbers do not add to the total because of this. Definitions used in the 2001 Census are available from <http://www.statistics.gov.uk/statbase/Product.asp?vlnk=12951>.

The 2007 Index of Deprivation is a Super Output Area (SOA) level measure of multiple deprivation and is made up of seven SOA level domain indices. There are two supplementary indices (Income Deprivation Affecting Children and Income Deprivation Affecting Older People).

Definitions and further data are available from <http://www.communities.gov.uk/index.asp?id=1128442>.

Enquiries to:

Nick Ash • tel: 0161 793 3660 • mail to: [nick.ash@salford.gov.uk](mailto:nick.ash@salford.gov.uk)

## Demographics

|   |   |
|---|---|
| Figure 1 - Multiple Deprivation in Salford, Index of Deprivation 2007 ..... | 1 |
| Figure 2 - Multiple Deprivation, Index of Deprivation 2007 .....            | 2 |
| Table 1 - Population Density .....  | 3 |
| Table 2 - Population by broad age group, 2007 .....                         | 4 |
| Figure 3 - Indicative population change by Salford wards 2001 - 2007 .....  | 5 |
| Table 3 - Country of birth .....  | 6 |
| Table 4 - Religion .....  | 6 |
| Table 5 - Ethnic groups .....   | 7 |
| Table 6 - Household Composition .....                                       | 8 |

## Improving health in Salford

|  |    |
|--|----|
| Figure 4 - Health deprivation and Disability domain, Index of Deprivation 2007 .....                 | 9  |
| Table 7 - Health and limiting long term illness .....  | 10 |
| Table 8 - Providing unpaid care .....  | 11 |
| Table 9 - Percentage of live births with a low birth weight (less than 2500 grams) 2006 - 2008 ..... | 12 |
| Table 10 - Mortality Rates (all ages) by all causes 2005 to 2007 .....                               | 12 |

## Reducing crime in Salford

|  |    |
|--|----|
| Figure 5 - Crime Domain, Index of Deprivation 2007 .....     | 13 |
| Figure 6- Total recorded crime rates 2006 - 2008 .....       | 14 |
| Figure 7- Burglary and Vehicle crime rates 2006 - 2008 ..... | 15 |

## Encouraging learning, leisure and creativity in Salford

|   |    |
|---|----|
| Figure 8 - Education, Skills and Training domain, Index of Deprivation 2007 ..... | 16 |
| Table 11 - Qualifications .....   | 17 |
| Table 12 - Key Stage 2 Pupil attainment by place of residence 2008 .....          | 18 |
| Table 13 - Percentage of pupils gaining 5 or more GCSE's at level A*-C .....      | 18 |

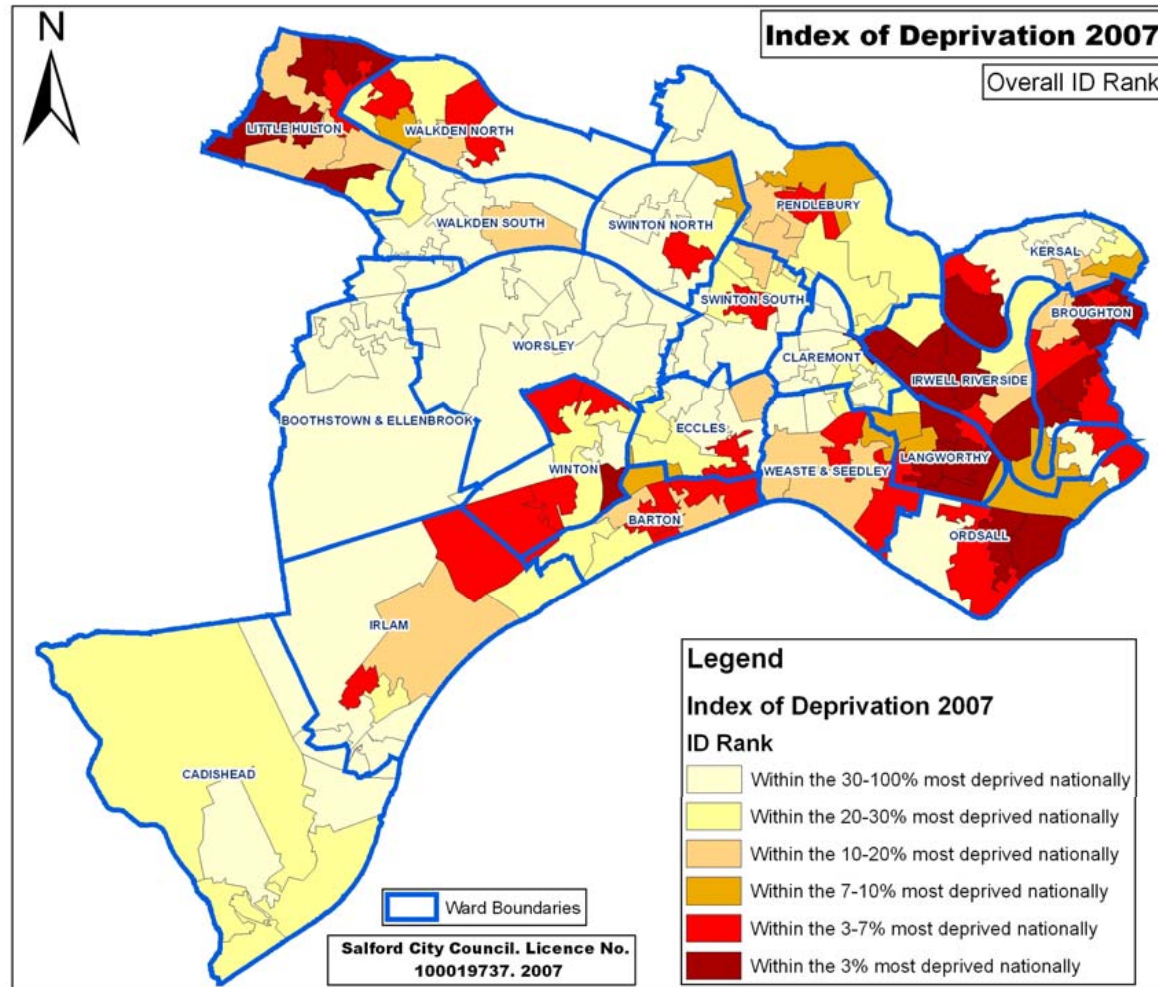
## Promoting inclusion in Salford

|  |    |
|--|----|
| Table 14 - Socio-economic class .....  | 19 |
| Table 15 - Households in receipt of council tax and/or housing benefit .....                                     | 20 |
| Figure 9 - Percentage of Households in receipt of council tax and/or housing benefit between 2007 and 2008 ..... | 20 |

|  |    |
|--|----|
| Table 16 Lone parents and employment .....   | 21 |
| <b>Creating prosperity in Salford</b>  |    |
| Figure 10 - Employment Domain, Index of Deprivation 2007 .....   | 22 |
| Table 17 - Economic Activity .....   | 23 |
| Table 18 - Unemployment Benefit claimants .....  | 24 |
| Table 19 - Employment by industrial sector .....   | 25 |
| Table 20 – Occupation Groups .....   | 26 |
| Table 21 - Hours worked .....  | 27 |
| Table 22 - Cars or vans (Owned or available for use within the household) .....                                    | 28 |
| Figure 11 - Income Domain, Index of Deprivation 2007 .....   | 29 |
| Figure 12 - Income deprivation affecting children Index, Index of Deprivation 2007 .....                           | 30 |
| Figure 13 - Income deprivation affecting older people Index, Index of Deprivation 2007 .....                       | 31 |
| <b>Enhancing Life in Salford</b>   |    |
| Figure 14 - Living environment, Index of Deprivation 2007 .....  | 32 |
| Table 23 – Household spaces and accommodation type .....   | 33 |
| Table 24 - Tenure (households) .....   | 34 |
| Table 25 - Change in the number of dwellings (by new build, change of use and demolition) per financial year ..... | 35 |
| Figure 15 - Barriers to housing and service domain, Index of Deprivation 2007 .....                                | 36 |
| Table 26 - Affordability ratio (Average house prices divided by mean household income) 2003 - 2008 .....           | 37 |
| Figure 16 - Mean household income and house prices 2003 - 2008 .....   | 37 |
| Figure 17 - Affordability Ratio 2003 - 2008 .....  | 38 |
| Table 27 - Vacant dwellings: all sectors 2006 - 2009 .....   | 39 |
| Figure 18 - Vacant dwellings trend: all sectors 2006 - 2009 .....  | 39 |
| Table 28 - Household amenities .....   | 40 |
| Table 29 - Changes in household occupancy (Average monthly turnover) .....   | 41 |
| Figure 19 - Changes in household occupancy trend (Average monthly turnover) .....                                  | 41 |

# Demographics

**Figure 1 - Multiple Deprivation in Salford, Index of Deprivation 2007**

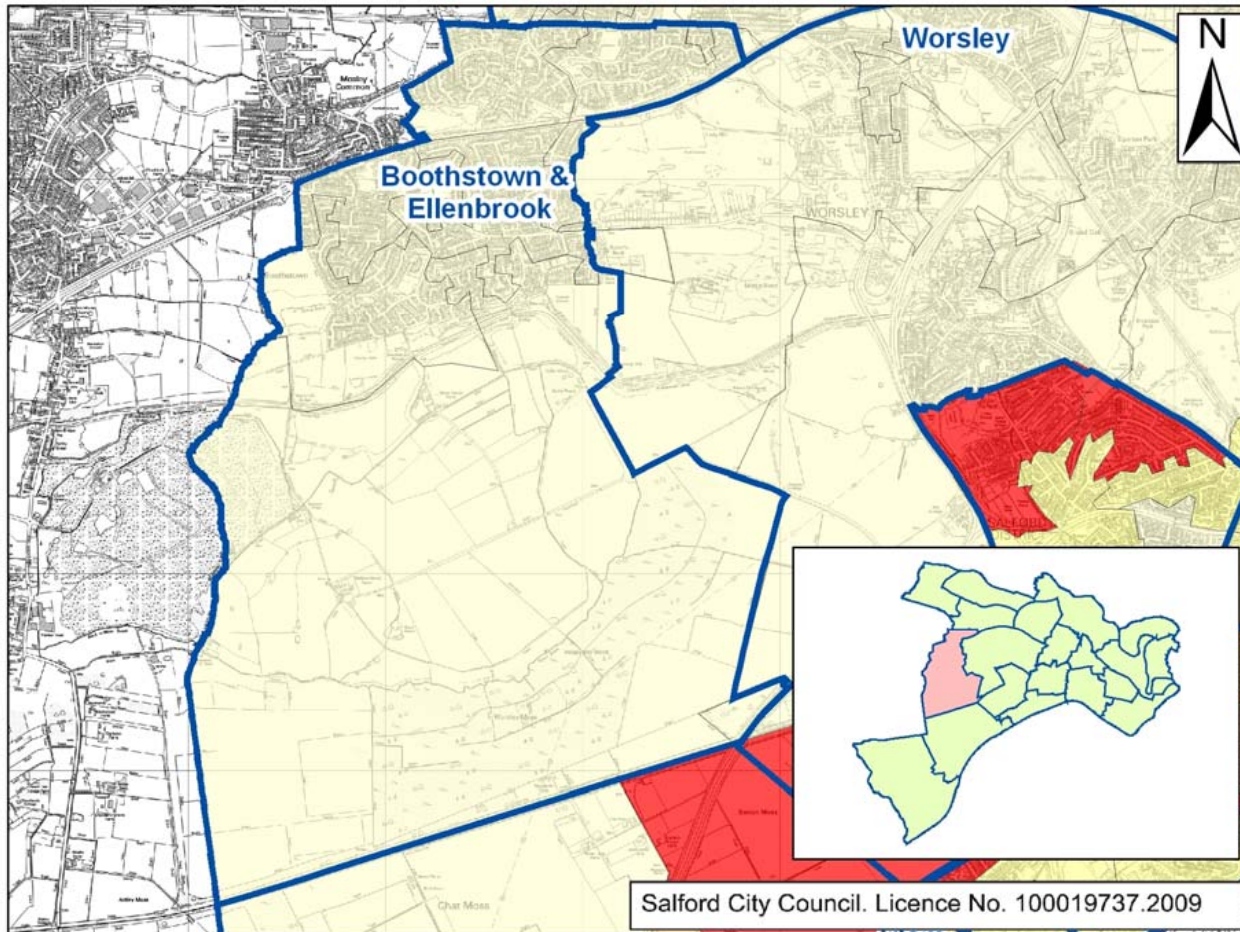


The index of multiple deprivation is a weighted combination of the seven individual deprivation domains (excluding the two additional indexes). The weightings are as follows;

- Income = 22.5%
- Employment = 22.5%
- Health & Disability = 13.5%
- Education Skills & Training = 13.5%
- Barriers to Housing & Services = 9.3%
- Crime = 9.3%
- Living Environment = 9.3%

**Source:** Index of Deprivation 2007, Communities and local government

**Figure 2 - Multiple Deprivation, Index of Deprivation 2007**



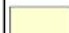
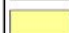
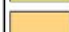



The index of multiple deprivation is a weighted combination of the seven individual deprivation domains (excluding the two additional indexes). The weightings are as follows;

- Income = 22.5%
- Employment = 22.5%
- Health & Disability = 13.5%
- Education Skills & Training = 13.5%
- Barriers to Housing & Services = 9.3%
- Crime = 9.3%
- Living Environment = 9.3%

**Legend**

 wards

**Index of Deprivation 2007**

-  Within the 30-100% most deprived nationally
-  Within the 20-30% most deprived nationally
-  Within the 10-20% most deprived nationally
-  Within the 7-10% most deprived nationally
-  Within the 3-7% most deprived nationally
-  Within the 3% most deprived nationally

**Source:** Index of Deprivation 2007, Communities and local government

**Table 1** - Population Density (Area in Hectares)

|                            |        |
|----------------------------|--------|
| Population                 | 9,802  |
| Area                       | 860.35 |
| Density <sup>1</sup>       | 11.4   |
| Greenbelt                  | 639.92 |
| Urban density <sup>2</sup> | 44.5   |

<sup>1</sup>Number of persons as a proportion of the ward area

<sup>2</sup>Number of persons as a proportion of the urban area of the ward: excludes greenbelt

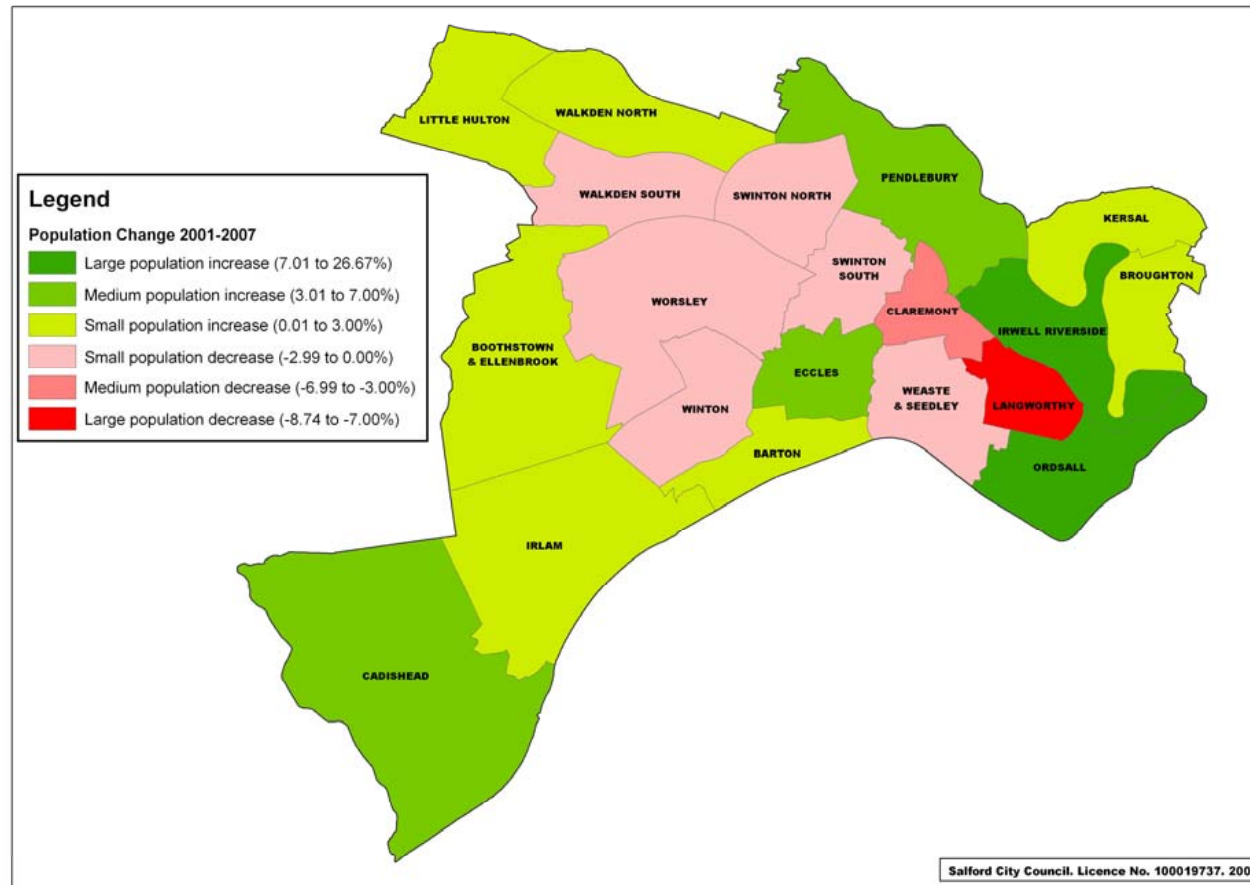
**Source:** 2007 population estimates, Office for National Statistics

**Table 2 - Population by broad age group, 2007**

|                                    | All people   | Persons aged 0-4   | Persons aged 5-9   | Persons aged 10-14 | Persons aged 15-19 | Persons aged 20-24 | Persons aged 25-29 | Persons aged 30-44 |
|------------------------------------|--------------|--------------------|--------------------|--------------------|--------------------|--------------------|--------------------|--------------------|
|                                    | No           | No                 | No                 | No                 | No                 | No                 | No                 | No                 |
| <b>Boothstown &amp; Ellenbrook</b> | <b>9,802</b> | <b>626</b>         | <b>579</b>         | <b>614</b>         | <b>596</b>         | <b>548</b>         | <b>546</b>         | <b>2,387</b>       |
| <i>Salford</i>                     | 219,178      | 13,412             | 11,392             | 12,778             | 15,076             | 19,949             | 17,090             | 45,889             |
| <i>Greater Manchester</i>          | 2,562,200    | 162,500            | 147,200            | 158,400            | 178,500            | 197,600            | 181,600            | 552,900            |
| <i>North West</i>                  | 6,864,300    | 402,400            | 385,100            | 427,200            | 475,400            | 483,800            | 419,100            | 1,423,800          |
| <i>England</i>                     | 51,092,000   | 3,038,400          | 2,869,300          | 3,091,500          | 3,354,100          | 3,457,900          | 3,357,700          | 11,102,400         |
|                                    | %            | %                  | %                  | %                  | %                  | %                  | %                  | %                  |
| <b>Boothstown &amp; Ellenbrook</b> | <b>100</b>   | <b>6.4</b>         | <b>5.9</b>         | <b>6.3</b>         | <b>6.1</b>         | <b>5.6</b>         | <b>5.6</b>         | <b>24.4</b>        |
| <i>Salford</i>                     | 100          | 6.1                | 5.2                | 5.8                | 6.9                | 9.1                | 7.8                | 20.9               |
| <i>Greater Manchester</i>          | 100          | 6.3                | 5.7                | 6.2                | 7.0                | 7.7                | 7.1                | 21.6               |
| <i>North West</i>                  | 100          | 5.9                | 5.6                | 6.2                | 6.9                | 7.0                | 6.1                | 20.7               |
| <i>England</i>                     | 100          | 5.9                | 5.6                | 6.1                | 6.6                | 6.8                | 6.6                | 21.7               |
|                                    | All people   | Persons aged 45-59 | Persons aged 60-64 | Persons aged 65-69 | Persons aged 70-74 | Persons aged 75-79 | Persons aged 80-84 | Persons aged 85+   |
|                                    | No           | No                 | No                 | No                 | No                 | No                 | No                 | No                 |
| <b>Boothstown &amp; Ellenbrook</b> | <b>9,802</b> | <b>2,134</b>       | <b>585</b>         | <b>365</b>         | <b>314</b>         | <b>222</b>         | <b>132</b>         | <b>154</b>         |
| <i>Salford</i>                     | 219,178      | 39,080             | 11,002             | 9,000              | 8,428              | 6,672              | 4,864              | 4,546              |
| <i>Greater Manchester</i>          | 2,562,200    | 471,700            | 135,700            | 107,200            | 91,900             | 74,200             | 54,700             | 48,100             |
| <i>North West</i>                  | 6,864,300    | 1,338,700          | 394,800            | 315,100            | 273,700            | 224,400            | 161,100            | 139,700            |
| <i>England</i>                     | 51,092,000   | 9,757,600          | 2,903,700          | 2,233,100          | 1,959,400          | 1,647,100          | 1,217,800          | 1,102,000          |
|                                    | %            | %                  | %                  | %                  | %                  | %                  | %                  | %                  |
| <b>Boothstown &amp; Ellenbrook</b> | <b>100</b>   | <b>21.8</b>        | <b>6.0</b>         | <b>3.7</b>         | <b>3.2</b>         | <b>2.3</b>         | <b>1.3</b>         | <b>1.6</b>         |
| <i>Salford</i>                     | 100          | 17.8               | 5.0                | 4.1                | 3.8                | 3.0                | 2.2                | 2.1                |
| <i>Greater Manchester</i>          | 100          | 18.4               | 5.3                | 4.2                | 3.6                | 2.9                | 2.1                | 1.9                |
| <i>North West</i>                  | 100          | 19.5               | 5.8                | 4.6                | 4.0                | 3.3                | 2.3                | 2.0                |
| <i>England</i>                     | 100          | 19.1               | 5.7                | 4.4                | 3.8                | 3.2                | 2.4                | 2.2                |

**Source:** Population estimates, Office for National Statistics

**Figure 3 - Indicative population change by Salford wards 2001 - 2007**



**Source:** 2007 ward population estimates & 2001 Census, Office for National Statistics

**Table 3 - Country of birth**

|                                    | All People   | England      | Scotland   | Wales      | N.Ireland  | Eire       | Other EU   | Elsewhere  |
|------------------------------------|--------------|--------------|------------|------------|------------|------------|------------|------------|
|                                    | No.          | No.          | No.        | No.        | No.        | No.        | No.        | No.        |
| <b>Boothstown &amp; Ellenbrook</b> | <b>9,791</b> | <b>9,164</b> | <b>150</b> | <b>56</b>  | <b>49</b>  | <b>67</b>  | <b>57</b>  | <b>248</b> |
| Salford                            | 216,103      | 198,623      | 3,002      | 1,692      | 1,264      | 3,034      | 1,957      | 6,531      |
| Greater Manchester                 | 2,482,328    | 2,237,127    | 32,088     | 19,903     | 13,283     | 31,362     | 20,277     | 128,288    |
| North West                         | 6,729,764    | 6,169,753    | 109,163    | 73,850     | 34,879     | 56,816     | 51,001     | 234,302    |
| England                            | 49,138,831   | 42,968,596   | 794,577    | 609,711    | 215,124    | 459,662    | 695,045    | 3,396,116  |
|                                    | %            | %            | %          | %          | %          | %          | %          | %          |
| <b>Boothstown &amp; Ellenbrook</b> | <b>100</b>   | <b>93.6</b>  | <b>1.5</b> | <b>0.6</b> | <b>0.5</b> | <b>0.7</b> | <b>0.6</b> | <b>2.5</b> |
| <i>Salford</i>                     | <i>100</i>   | <i>91.9</i>  | <i>1.4</i> | <i>0.8</i> | <i>0.6</i> | <i>1.4</i> | <i>0.9</i> | <i>3.0</i> |
| <i>Greater Manchester</i>          | <i>100</i>   | <i>90.1</i>  | <i>1.3</i> | <i>0.8</i> | <i>0.5</i> | <i>1.3</i> | <i>0.8</i> | <i>5.2</i> |
| <i>North West</i>                  | <i>100</i>   | <i>91.7</i>  | <i>1.6</i> | <i>1.1</i> | <i>0.5</i> | <i>0.8</i> | <i>0.8</i> | <i>3.5</i> |
| <i>England</i>                     | <i>100</i>   | <i>87.5</i>  | <i>1.6</i> | <i>1.3</i> | <i>0.4</i> | <i>0.9</i> | <i>1.4</i> | <i>6.9</i> |

**Source:** 2001 Census; Office for National Statistics

**Table 4 - Religion**

|                                    | All people   | Christian    | Buddhist   | Hindu      | Jewish     | Muslim     | Sikh       | Other religion | No religion | Not stated |
|------------------------------------|--------------|--------------|------------|------------|------------|------------|------------|----------------|-------------|------------|
|                                    | No.          | No.          | No.        | No.        | No.        | No.        | No.        | No.            | No.         | No.        |
| <b>Boothstown &amp; Ellenbrook</b> | <b>9,809</b> | <b>8,067</b> | <b>26</b>  | <b>63</b>  | <b>36</b>  | <b>78</b>  | <b>2</b>   | <b>3</b>       | <b>946</b>  | <b>589</b> |
| Salford                            | 216,127      | 165,240      | 469        | 695        | 5,183      | 2,639      | 242        | 315            | 23,792      | 17,555     |
| Greater Manchester                 | 2,482,328    | 1,840,599    | 5,156      | 17,260     | 21,733     | 125,219    | 3,720      | 4,301          | 281,273     | 183,067    |
| North West                         | 6,729,764    | 5,249,686    | 11,794     | 27,211     | 27,974     | 204,261    | 6,487      | 10,625         | 705,045     | 486,681    |
| England                            | 49,138,831   | 35,251,244   | 139,046    | 546,982    | 257,671    | 1,524,887  | 327,343    | 143,811        | 7,171,332   | 3,776,515  |
|                                    | %            | %            | %          | %          | %          | %          | %          | %              | %           | %          |
| <b>Boothstown &amp; Ellenbrook</b> | <b>100</b>   | <b>82.2</b>  | <b>0.3</b> | <b>0.6</b> | <b>0.4</b> | <b>0.8</b> | <b>0.0</b> | <b>0.0</b>     | <b>9.6</b>  | <b>6.0</b> |
| <i>Salford</i>                     | <i>100</i>   | <i>76.5</i>  | <i>0.2</i> | <i>0.3</i> | <i>2.4</i> | <i>1.2</i> | <i>0.1</i> | <i>0.1</i>     | <i>11.0</i> | <i>8.1</i> |
| <i>Greater Manchester</i>          | <i>100</i>   | <i>74.2</i>  | <i>0.2</i> | <i>0.7</i> | <i>0.9</i> | <i>5.0</i> | <i>0.1</i> | <i>0.2</i>     | <i>11.3</i> | <i>7.4</i> |
| <i>North West</i>                  | <i>100</i>   | <i>78.0</i>  | <i>0.2</i> | <i>0.4</i> | <i>0.4</i> | <i>3.0</i> | <i>0.1</i> | <i>0.2</i>     | <i>10.5</i> | <i>7.2</i> |
| <i>England</i>                     | <i>100</i>   | <i>71.7</i>  | <i>0.3</i> | <i>1.1</i> | <i>0.5</i> | <i>3.1</i> | <i>0.7</i> | <i>0.3</i>     | <i>14.6</i> | <i>7.7</i> |

2001 Census

**Source:** 2001 Census; Office for National Statistics

**Table 5 - Ethnic groups**

|                                    | White                        |                                    |  |            |                    | Mixed                              |                                |              |                    |                    | Chinese            |
|------------------------------------|------------------------------|------------------------------------|--|------------|--------------------|------------------------------------|--------------------------------|--------------|--------------------|--------------------|--------------------|
|                                    | All people                   | British                            | Irish                                  | Other      | Total White groups | White/ Black Caribbean             | White/ Black African           | White/ Asian | Other              | Total Mixed groups |                    |
|                                    | No.                          | No.                                | No.                                    | No.        | No.                | No.                                | No.                            | No.          | No.                | No.                | No.                |
| <b>Boothstown &amp; Ellenbrook</b> | <b>9,786</b>                 | <b>9,253</b>                       | <b>99</b>                              | <b>91</b>  | <b>9,443</b>       | <b>42</b>                          | <b>3</b>                       | <b>27</b>    | <b>15</b>          | <b>87</b>          | <b>88</b>          |
| Salford                            | 216,058                      | 200,342                            | 3,886                                  | 3,533      | 207,761            | 865                                | 340                            | 483          | 485                | 2,173              | 1,176              |
| Greater Manchester                 | 2,482,328                    | 2,183,096                          | 42,646                                 | 34,765     | 2,260,507          | 13,104                             | 4,860                          | 8,547        | 6,390              | 32,901             | 11,858             |
| North West                         | 6,729,764                    | 6,203,043                          | 77,499                                 | 74,953     | 6,355,495          | 22,119                             | 9,853                          | 17,223       | 13,344             | 62,539             | 26,887             |
| England                            | 49,138,831                   | 42,747,136                         | 624,115                                | 1,308,110  | 44,679,361         | 231,424                            | 76,498                         | 184,014      | 151,437            | 643,373            | 220,681            |
|                                    | %                            | %                                  | %                                      | %          | %                  | %                                  | %                              | %            | %                  | %                  | %                  |
| <b>Boothstown &amp; Ellenbrook</b> | <b>100</b>                   | <b>94.6</b>                        | <b>1.0</b>                             | <b>0.9</b> | <b>96.5</b>        | <b>0.4</b>                         | <b>0.0</b>                     | <b>0.3</b>   | <b>0.2</b>         | <b>0.9</b>         | <b>0.9</b>         |
| Salford                            | 100                          | 92.7                               | 1.8                                    | 1.6        | 96.2               | 0.4                                | 0.2                            | 0.2          | 0.2                | 1.0                | 0.5                |
| Greater Manchester                 | 100                          | 88.0                               | 1.7                                    | 1.4        | 91.1               | 0.5                                | 0.2                            | 0.3          | 0.2                | 1.2                | 0.5                |
| North West                         | 100                          | 92.7                               | 1.2                                    | 1.1        | 95.0               | 0.3                                | 0.2                            | 0.3          | 0.2                | 0.9                | 0.4                |
| England                            | 100                          | 87.0                               | 1.3                                    | 2.7        | 90.9               | 0.5                                | 0.2                            | 0.4          | 0.3                | 1.3                | 0.5                |
|                                    | Asian                        |                                    |  |            |                    | Black                              |                                |              |                    |                    | Other ethnic group |
| All people                         | Indian/ Asian British Indian | Pakistani/ Asian British Pakistani | Bangladeshi/ Asian British Bangladeshi | Other      | Total Asian groups | Caribbean/ Black British Caribbean | African/ Black British African | Other        | Total Black groups |                    |                    |
|                                    | No.                          | No.                                | No.                                    | No.        | No.                | No.                                | No.                            | No.          | No.                | No.                |                    |
| <b>Boothstown &amp; Ellenbrook</b> | <b>9,786</b>                 | <b>89</b>                          | <b>36</b>                              | <b>5</b>   | <b>6</b>           | <b>136</b>                         | <b>17</b>                      | <b>10</b>    | <b>0</b>           | <b>27</b>          | <b>6</b>           |
| Salford                            | 216,058                      | 1,193                              | 953                                    | 394        | 437                | 2,977                              | 393                            | 673          | 117                | 1,183              | 791                |
| Greater Manchester                 | 2,482,328                    | 35,931                             | 75,187                                 | 20,064     | 8,836              | 140,018                            | 16,233                         | 10,255       | 3,259              | 29,747             | 7,297              |
| North West                         | 6,729,764                    | 72,219                             | 116,968                                | 26,003     | 14,685             | 229,875                            | 20,422                         | 15,912       | 5,303              | 41,637             | 13,331             |
| England                            | 49,138,831                   | 1,028,546                          | 706,539                                | 275,394    | 237,810            | 2,248,289                          | 561,246                        | 475,938      | 95,324             | 1,132,508          | 214,619            |
|                                    | %                            | %                                  | %                                      | %          | %                  | %                                  | %                              | %            | %                  | %                  | %                  |
| <b>Boothstown &amp; Ellenbrook</b> | <b>100</b>                   | <b>0.9</b>                         | <b>0.4</b>                             | <b>0.1</b> | <b>0.1</b>         | <b>1.4</b>                         | <b>0.2</b>                     | <b>0.1</b>   | <b>0.0</b>         | <b>0.3</b>         | <b>0.1</b>         |
| Salford                            | 100                          | 0.6                                | 0.4                                    | 0.2        | 0.2                | 1.4                                | 0.2                            | 0.3          | 0.1                | 0.5                | 0.4                |
| Greater Manchester                 | 100                          | 1.5                                | 3.0                                    | 0.8        | 0.4                | 5.7                                | 0.7                            | 0.4          | 0.1                | 1.2                | 0.3                |
| North West                         | 100                          | 1.1                                | 1.7                                    | 0.4        | 0.2                | 3.4                                | 0.3                            | 0.2          | 0.1                | 0.6                | 0.2                |
| England                            | 100                          | 2.1                                | 1.4                                    | 0.6        | 0.5                | 4.6                                | 1.1                            | 1.0          | 0.2                | 2.3                | 0.4                |

Source: 2001 Census; Office for National Statistics

**Table 6 - Household Composition**

|                                    | All households | One person |             | One family and no others |                 |                         |                            |                         |                         |                            |
|------------------------------------|----------------|------------|-------------|--------------------------|-----------------|-------------------------|----------------------------|-------------------------|-------------------------|----------------------------|
|                                    |                | Pensioner  | Other       | All pensioners           | Married couple: |                         |                            | Cohabiting couple:      |                         |                            |
|                                    |                |            |             |                          | No children     | With dependent children | All children non-dependent | Households: no children | With dependent children | All children non-dependent |
| <b>Boothstown &amp; Ellenbrook</b> | <b>3,875</b>   | <b>336</b> | <b>490</b>  | <b>269</b>               | <b>641</b>      | <b>1,031</b>            | <b>298</b>                 | <b>253</b>              | <b>135</b>              | <b>18</b>                  |
| Salford                            | 94,157         | 15,819     | 18,771      | 6,929                    | 9,231           | 12,841                  | 5,468                      | 4,132                   | 3,504                   | 345                        |
| Greater Manchester                 | 1,040,231      | 154,490    | 178,660     | 78,120                   | 118,320         | 172,922                 | 64,808                     | 46,326                  | 39,366                  | 3,781                      |
| North West                         | 2,812,789      | 423,623    | 446,611     | 238,711                  | 345,657         | 480,977                 | 182,482                    | 115,123                 | 96,870                  | 9,519                      |
| England                            | 20,451,427     | 2,939,465  | 3,210,799   | 1,826,453                | 2,656,440       | 3,591,335               | 1,218,191                  | 976,879                 | 661,073                 | 66,352                     |
|                                    | %              | %          | %           | %                        | %               | %                       | %                          | %                       | %                       | %                          |
| <b>Boothstown &amp; Ellenbrook</b> | <b>100</b>     | <b>8.7</b> | <b>12.7</b> | <b>6.9</b>               | <b>16.5</b>     | <b>26.6</b>             | <b>7.7</b>                 | <b>6.5</b>              | <b>3.5</b>              | <b>0.5</b>                 |
| Salford                            | 100            | 16.8       | 19.9        | 7.4                      | 9.8             | 13.6                    | 5.8                        | 4.4                     | 3.7                     | 0.4                        |
| Greater Manchester                 | 100            | 14.9       | 17.2        | 7.5                      | 11.4            | 16.6                    | 6.2                        | 4.5                     | 3.8                     | 0.4                        |
| North West                         | 100            | 15.1       | 15.9        | 8.5                      | 12.3            | 17.1                    | 6.5                        | 4.1                     | 3.4                     | 0.3                        |
| England                            | 100            | 14.4       | 15.7        | 8.9                      | 13.0            | 17.6                    | 6.0                        | 4.8                     | 3.2                     | 0.3                        |

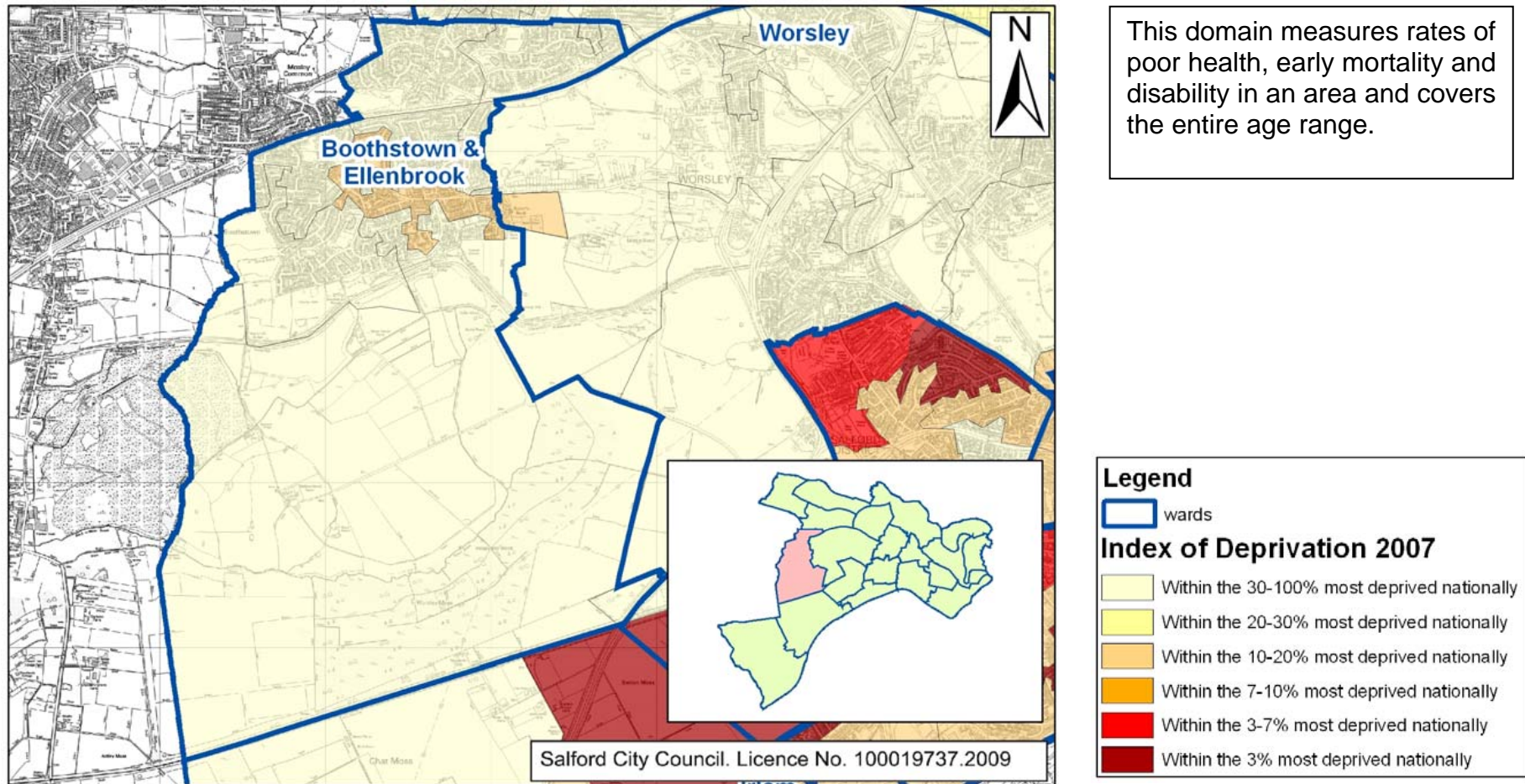
  

|                                    | One family and no others |                            | Other households:       |             |               |            |
|------------------------------------|--------------------------|----------------------------|-------------------------|-------------|---------------|------------|
|                                    | Lone parents:            |                            | with dependant children | all student | all pensioner | Other      |
|                                    | with dependent children  | all children non-dependent |                         |             |               |            |
| <b>Boothstown &amp; Ellenbrook</b> | <b>171</b>               | <b>96</b>                  | <b>54</b>               | <b>0</b>    | <b>9</b>      | <b>76</b>  |
| Salford                            | 8,167                    | 3,603                      | 1,894                   | 239         | 380           | 2,833      |
| Greater Manchester                 | 83,723                   | 36,197                     | 24,833                  | 3,978       | 3,709         | 30,998     |
| North West                         | 215,610                  | 97,737                     | 62,728                  | 9,137       | 11,378        | 76,626     |
| England                            | 1,311,974                | 622,904                    | 458,369                 | 79,143      | 82,384        | 749,666    |
|                                    | %                        | %                          | %                       | %           | %             | %          |
| <b>Boothstown &amp; Ellenbrook</b> | <b>4.4</b>               | <b>2.5</b>                 | <b>1.4</b>              | <b>0.0</b>  | <b>0.2</b>    | <b>2.0</b> |
| Salford                            | 8.7                      | 3.8                        | 2.0                     | 0.3         | 0.4           | 3.0        |
| Greater Manchester                 | 8.0                      | 3.5                        | 2.4                     | 0.4         | 0.4           | 3.0        |
| North West                         | 7.7                      | 3.5                        | 2.2                     | 0.3         | 0.4           | 2.7        |
| England                            | 6.4                      | 3.0                        | 2.2                     | 0.4         | 0.4           | 3.7        |

Source: 2001 Census; Office for National Statistics

# Improving health in Salford

Figure 4 - Health deprivation and Disability domain, Index of Deprivation 2007



Source: Index of Deprivation 2007, Communities and local government

**Table 7 - Health and limiting long term illness**

| Residents' perception of their state of health |              |              |                    |                 | Having limiting long term illness |  |   |
|--|--------------|--------------|--------------------|-----------------|-----------------------------------|--|---|
|  | All people   | Good health  | Fairly good health | Not good health | All people                        | People with limiting long term illness | Working age with limiting long term illness |
|  | No.          | No.          | No.                | No.             | No.                               | No.                                    | No.   |
| <b>Boothstown &amp; Ellenbrook</b>             | <b>9,811</b> | <b>7,374</b> | <b>1,779</b>       | <b>659</b>      | <b>9,811</b>                      | <b>1,311</b>                           | <b>665</b>                                  |
| Salford  | 216,100      | 139,751      | 49,297             | 27,055          | 216,100                           | 49,311                                 | 24,094                                      |
| Greater Manchester                             | 2,482,328    | 1,649,395    | 557,210            | 275,723         | 2,482,328                         | 506,865                                | 250,351                                     |
| North West                                     | 6,729,764    | 4,501,183    | 1,491,467          | 737,114         | 6,729,764                         | 1,394,609                              | 670,148                                     |
| England  | 49,138,831   | 33,787,361   | 10,915,594         | 4,435,876       | 49,138,831                        | 8,809,194                              | 4,014,005                                   |
| <b>Boothstown &amp; Ellenbrook</b>             | <b>100</b>   | <b>75.2</b>  | <b>18.1</b>        | <b>6.7</b>      | <b>100</b>                        | <b>13.4</b>                            | <b>6.8</b>                                  |
| <i>Salford</i>                                 | <i>100</i>   | <i>64.7</i>  | <i>22.8</i>        | <i>12.5</i>     | <i>100</i>                        | <i>22.8</i>                            | <i>11.1</i>                                 |
| <i>Greater Manchester</i>                      | <i>100</i>   | <i>66.5</i>  | <i>22.4</i>        | <i>11.1</i>     | <i>100</i>                        | <i>20.4</i>                            | <i>10.1</i>                                 |
| <i>North West</i>                              | <i>100</i>   | <i>66.9</i>  | <i>22.2</i>        | <i>10.9</i>     | <i>100</i>                        | <i>20.7</i>                            | <i>10.0</i>                                 |
| <i>England</i>                                 | <i>100</i>   | <i>68.8</i>  | <i>22.2</i>        | <i>9.0</i>      | <i>100</i>                        | <i>17.9</i>                            | <i>8.2</i>                                  |

**Source:** 2001 Census; Office for National Statistics

**Table 8 - Providing unpaid care**

|                                    | All people who provide unpaid care | Unpaid care 1-19 hours/week | Unpaid care 20-49 hours/week | Unpaid care 50+ hours/week |
|------------------------------------|------------------------------------|-----------------------------|------------------------------|----------------------------|
|                                    | No.                                | No.                         | No.                          | No.                        |
| <b>Boothstown &amp; Ellenbrook</b> | <b>961</b>                         | <b>713</b>                  | <b>87</b>                    | <b>161</b>                 |
| Salford                            | 22,443                             | 13,761                      | 2,965                        | 5,717                      |
| Greater Manchester                 | 257,739                            | 168,601                     | 31,061                       | 58,077                     |
| North West                         | 724,802                            | 473,083                     | 87,407                       | 164,312                    |
| England                            | 4,877,060                          | 3,347,531                   | 530,797                      | 998,732                    |
|                                    | %                                  | %                           | %                            | %                          |
| <b>Boothstown &amp; Ellenbrook</b> | <b>100</b>                         | <b>74.2</b>                 | <b>9.1</b>                   | <b>16.7</b>                |
| <i>Salford</i>                     | <i>100</i>                         | <i>61.3</i>                 | <i>13.2</i>                  | <i>25.5</i>                |
| <i>Greater Manchester</i>          | <i>100</i>                         | <i>65.4</i>                 | <i>12.1</i>                  | <i>22.5</i>                |
| <i>North West</i>                  | <i>100</i>                         | <i>65.3</i>                 | <i>12.0</i>                  | <i>22.7</i>                |
| <i>England</i>                     | <i>100</i>                         | <i>68.6</i>                 | <i>10.9</i>                  | <i>20.5</i>                |

**Source:** 2001 Census; Office for National Statistics

**Table 9** - Percentage of live births with a low birth weight (less than 2500 grams) 2007 – 2009

|                                    | <b>All live births</b> | <b>Births under 2500 g weight</b> | <b>Low birthweight</b> |
|------------------------------------|------------------------|-----------------------------------|------------------------|
|                                    | No.                    | No.                               | %                      |
| <b>Boothstown &amp; Ellenbrook</b> | <b>326</b>             | <b>18</b>                         | <b>5.5</b>             |
| Salford                            | 9836                   | 679                               | 6.9                    |

**Source** - Public Health Birth File, Salford Primary Care Trust

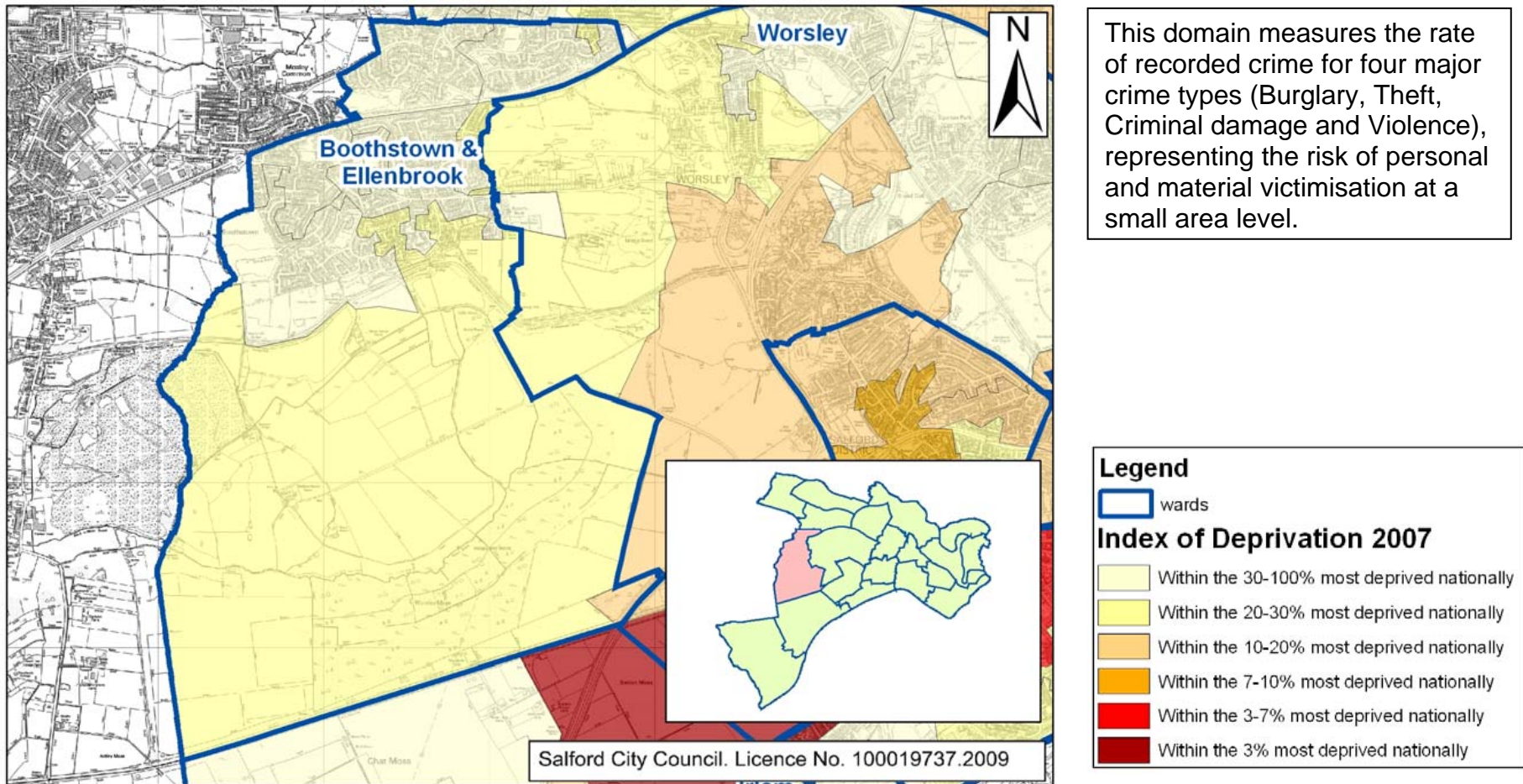
**Table 10** - Mortality Rates (all ages) by all causes 2005 - 2007

|                                    | Standardised Mortality Ratio |
|------------------------------------|------------------------------|
| <b>Boothstown &amp; Ellenbrook</b> | <b>96</b>                    |
| Salford                            | 123                          |
| North West                         | 118                          |
| England                            | 100                          |

**Source** – Salford Primary Care Trust

# Reducing crime in Salford

**Figure 5 - Crime Domain, Index of Deprivation 2007**



This domain measures the rate of recorded crime for four major crime types (Burglary, Theft, Criminal damage and Violence), representing the risk of personal and material victimisation at a small area level.

**Legend**

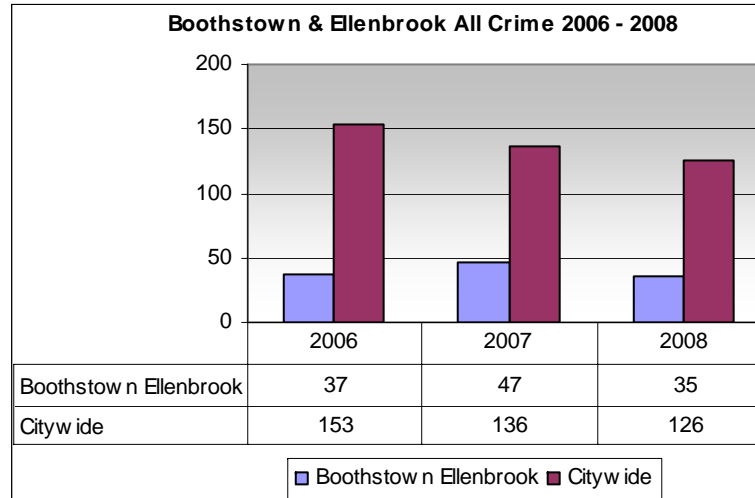
wards

**Index of Deprivation 2007**

- Within the 30-100% most deprived nationally
- Within the 20-30% most deprived nationally
- Within the 10-20% most deprived nationally
- Within the 7-10% most deprived nationally
- Within the 3-7% most deprived nationally
- Within the 3% most deprived nationally

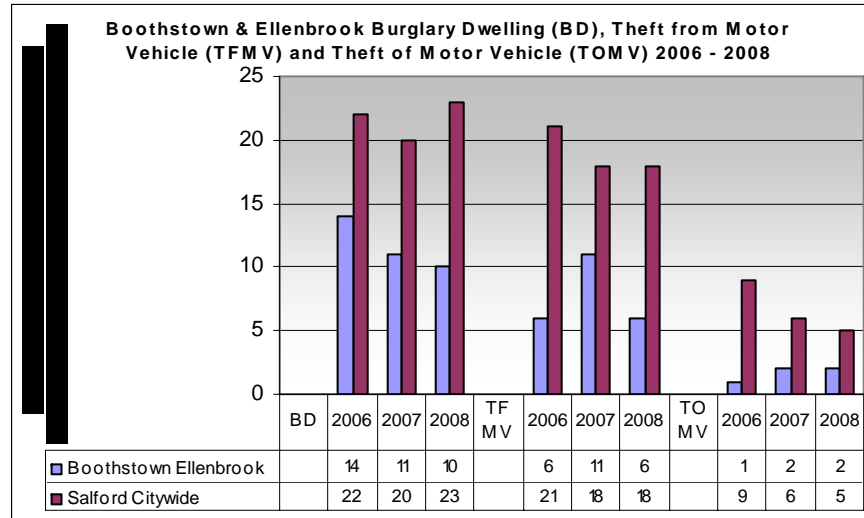
**Source:** Index of Deprivation 2007, Communities and local government

**Figure 6 - Total recorded crime rates 2006 - 2008**



**Source:** Community Safety Unit, Salford City Council

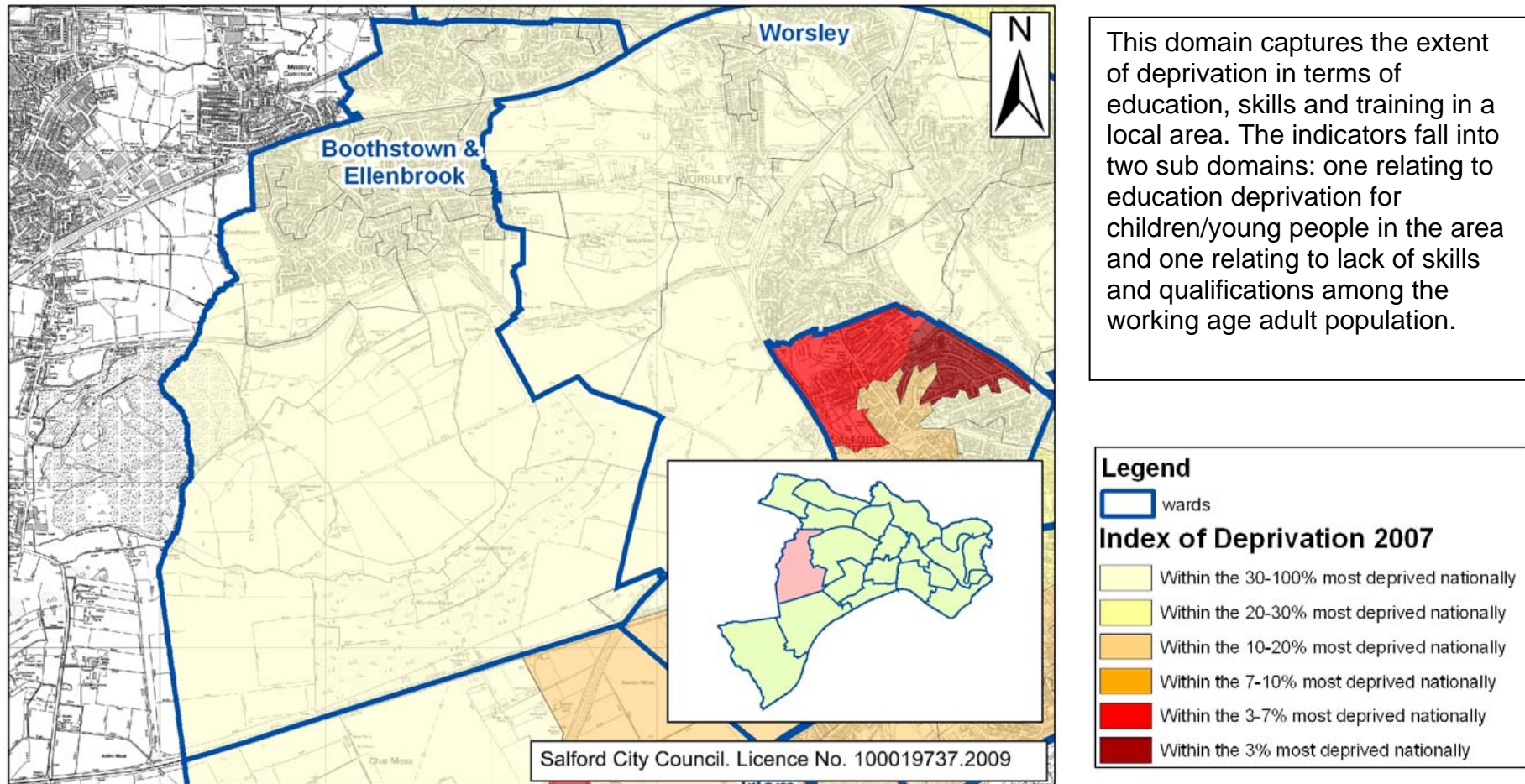
**Figure 7 - Burglary and Vehicle crime rates 2006 - 2008**



**Source:** Community Safety Unit Salford City Council

# Encouraging learning, leisure and creativity in Salford

**Figure 8 - Education, Skills and Training domain, Index of Deprivation 2007**



**Source:** Index of Deprivation 2007, Communities and local government

**Table 11 - Qualifications**

|                                    | All people aged 16-74 | No qualifications | Highest qualification attained: level 1 | Highest qualification attained: level 2 | Highest qualification attained: level 3 | Highest qualification attained: level 4/5 | Other / level unknown |
|------------------------------------|-----------------------|-------------------|---|---|---|---|-----------------------|
| <b>Boothstown &amp; Ellenbrook</b> | <b>7,318</b>          | <b>1,439</b>      | <b>1,164</b>                            | <b>1,666</b>                            | <b>653</b>                              | <b>1,821</b>                              | <b>574</b>            |
| <i>Salford</i>                     | 155,375               | 55,196            | 25,419                                  | 28,853                                  | 12,775                                  | 22,365                                    | 10,763                |
| <i>Greater Manchester</i>          | 1,781,882             | 582,902           | 295,645                                 | 335,621                                 | 140,606                                 | 303,553                                   | 123,555               |
| <i>North West</i>                  | 4,839,669             | 1,543,524         | 808,718                                 | 940,292                                 | 374,985                                 | 830,945                                   | 341,205               |
| <i>England</i>                     | 35,532,091            | 10,251,674        | 5,909,093                               | 6,877,530                               | 2,962,282                               | 7,072,052                                 | 2,459,460             |
|                                    | %                     | %                 | %                                       | %                                       | %                                       | %   | %                     |
| <b>Boothstown &amp; Ellenbrook</b> | <b>100</b>            | <b>19.7</b>       | <b>15.9</b>                             | <b>22.8</b>                             | <b>8.9</b>                              | <b>24.9</b>                               | <b>7.8</b>            |
| <i>Salford</i>                     | 100                   | 35.5              | 16.4                                    | 18.6                                    | 8.2                                     | 14.4                                      | 6.9                   |
| <i>Greater Manchester</i>          | 100                   | 32.7              | 16.6                                    | 18.8                                    | 7.9                                     | 17.0                                      | 6.9                   |
| <i>North West</i>                  | 100                   | 31.9              | 16.7                                    | 19.4                                    | 7.7                                     | 17.2                                      | 7.1                   |
| <i>England</i>                     | 100                   | 28.9              | 16.6                                    | 19.4                                    | 8.3                                     | 19.9                                      | 6.9                   |

**Source:** 2001 Census; Office for National Statistics

**Definitions:**

Level 1 qualifications include: 1+ O-level, CSE, GCSE; NVQ level 1; foundation level GNVQ

Level 2 qualifications include: 5+ O-levels; 5+ GCE (grade 1s); 5+GCSE (grades a\*-c); school certificate

1+A/AS-levels; NVQ level 2; and intermediate GNVQ

Level 3 qualifications include: 2+ A-levels; 4+AS-levels; Higher School Certificate; NVQ level 3; advanced GNVQ

Level 4/5 qualifications include: first degree; higher degree; NVQ levels 4/5; HNC; HND; qualified teacher status; qualified medical doctor; qualified dentist; qualified nurse; midwife; and health visitor

Other qualifications include: City & Guilds; RSA/OCR; BTec/Edexcel; other professional qualifications

**Table 12 - Key Stage 2 Pupil attainment by place of residence 2008**

|                        |                                    | Level 4+   | Level 5+   | Average points |
|------------------------|------------------------------------|------------|------------|----------------|
| English                | <b>Boothstown &amp; Ellenbrook</b> | <b>93%</b> | <b>46%</b> | <b>29</b>      |
|                        | Salford                            | 78%        | 26%        | 27             |
|                        | England                            | 81%        | 29%        |                |
| Maths                  | <b>Boothstown &amp; Ellenbrook</b> | <b>94%</b> | <b>52%</b> | <b>30</b>      |
|                        | Salford                            | 77%        | 28%        | 27             |
|                        | England                            | 78%        | 31%        |                |
| Science                | <b>Boothstown &amp; Ellenbrook</b> | <b>95%</b> | <b>58%</b> | <b>30</b>      |
|                        | Salford                            | 85%        | 39%        | 28             |
|                        | England                            | 88%        | 44%        |                |
| Overall Average Points | <b>Boothstown &amp; Ellenbrook</b> |            |            | <b>29.8</b>    |
|                        | Salford                            |            |            | 27.5           |
|                        | England                            |            |            | 27.8           |

Key Stage 2 tests are usually taken in year 6 when children are 11 years old. The subjects covered are English, mathematics and science. Level 4 represents the level of achievement expected of most 11 year olds. Level 5 means pupils are achieving beyond the expected level.

The levels of attainment are based on the points scored by each child in the subjects listed above. Averaging the points scored by every child in all subjects at the school allows the average points score to be calculated. This score gives a more inclusive measure of attainment as it looks at every child rather than just those achieving a certain level

**Source:** Children's Services, Salford City Council (Ward level) and Department for Education and Skills (Salford and England)

**Table 13 - Percent of pupils gaining 5 or more GCSE's at level A\*-C 2007 - 2008**

|                                    | GCSE Attainment |            |
|------------------------------------|-----------------|------------|
|                                    | 2007            | 2008       |
| <b>Boothstown &amp; Ellenbrook</b> | <b>73%</b>      | <b>86%</b> |
| Salford                            | 60%             | 66%        |
| England                            | 62%             | 65%        |

**Source:** Children's Services, Salford City Council (Ward level) and Department for Education and Skills (Salford and England)

Promoting inclusion in Salford

**Table 14 - Socio-economic class**

|  | All people 16<br>- 74 in<br>employment | Managers<br>and senior<br>officials | Professional<br>occupations | Associate<br>professional<br>& technical<br>occupations | Administrative<br>& secretarial<br>occupations | Skilled trade<br>occupations | Personal<br>service<br>occupations | Sales &<br>customer<br>service<br>occupations | Process:<br>plant and<br>machine<br>operatives | Elementary<br>occupations |
|--|--|-------------------------------------|-----------------------------|---|--|------------------------------|------------------------------------|---|--|---------------------------|
|  | No.                                    | No.                                 | No.                         | No.   | No.  | No.                          | No.                                | No.   | No.  | No.                       |
| <b>Boothstown &amp;<br/>Ellenbrook</b> | <b>5,406</b>                           | <b>1,151</b>                        | <b>821</b>                  | <b>853</b>  | <b>837</b>                                     | <b>436</b>                   | <b>307</b>                         | <b>341</b>                                    | <b>295</b>                                     | <b>365</b>                |
| Salford                                | 89,931                                 | 10,959                              | 8,199                       | 11,172  | 13,554   | 9,504                        | 7,242                              | 7,755   | 8,885  | 12,654                    |
| Greater Manchester                     | 1,077,347                              | 143,178                             | 112,219                     | 138,875   | 146,744  | 120,461                      | 79,982                             | 89,779  | 108,451  | 137,658                   |
| North West                             | 2,900,020                              | 397,264                             | 304,030                     | 369,984   | 379,135  | 338,979                      | 221,142                            | 241,371                                       | 285,056  | 363,059                   |
| England                                | 22,441,498                             | 3,424,899                           | 2,515,679                   | 3,104,993   | 3,004,721                                      | 2,591,875                    | 1,545,367                          | 1,717,796                                     | 1,889,126                                      | 2,647,042                 |
|  | %                                      | %                                   | %                           | %   | %  | %                            | %                                  | %   | %  | %                         |
| <b>Boothstown &amp;<br/>Ellenbrook</b> | <b>100</b>                             | <b>21.3</b>                         | <b>15.2</b>                 | <b>15.8</b>   | <b>15.5</b>                                    | <b>8.1</b>                   | <b>5.7</b>                         | <b>6.3</b>                                    | <b>5.5</b>                                     | <b>6.8</b>                |
| Salford                                | 100                                    | 12.2                                | 9.1                         | 12.4  | 15.1   | 10.6                         | 8.1                                | 8.6   | 9.9  | 14.1                      |
| Greater Manchester                     | 100                                    | 13.3                                | 10.4                        | 12.9  | 13.6   | 11.2                         | 7.4                                | 8.3   | 10.1   | 12.8                      |
| North West                             | 100                                    | 13.7                                | 10.5                        | 12.8  | 13.1   | 11.7                         | 7.6                                | 8.3   | 9.8  | 12.5                      |
| England                                | 100                                    | 15.3                                | 11.2                        | 13.8  | 13.4   | 11.5                         | 6.9                                | 7.7   | 8.4  | 11.8                      |

**Source:** 2001 Census; Office for National Statistics

**Table 15** - Households in receipt of council tax and/or housing benefit

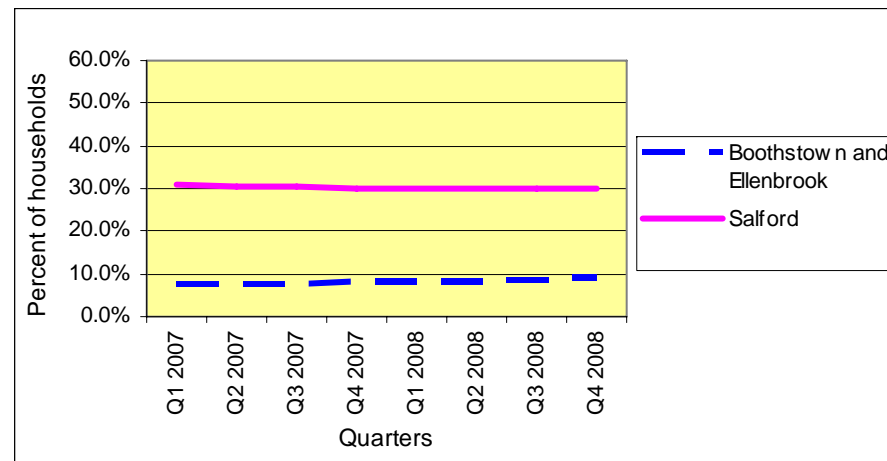
|                                    | Quarter 1 2007 |             | Quarter 2 2007 |             | Quarter 3 2007 |             | Quarter 4 2007 |             |
|------------------------------------|----------------|-------------|----------------|-------------|----------------|-------------|----------------|-------------|
|                                    | No.            | %           | No.            | %           | No.            | %           | No.            | %           |
| <b>Boothstown &amp; Ellenbrook</b> | <b>297</b>     | <b>7.7%</b> | <b>293</b>     | <b>7.6%</b> | <b>296</b>     | <b>7.7%</b> | <b>301</b>     | <b>7.8%</b> |
| Salford                            | 29902          | 30.8%       | 29608          | 30.4%       | 29840          | 30.6%       | 29523          | 30.2%       |

|                                    | Quarter 1 2008 |             | Quarter 2 2008 |             | Quarter 3 2008 |             | Quarter 4 2008 |             |
|------------------------------------|----------------|-------------|----------------|-------------|----------------|-------------|----------------|-------------|
|                                    | No.            | %           | No.            | %           | No.            | %           | No.            | %           |
| <b>Boothstown &amp; Ellenbrook</b> | <b>305</b>     | <b>7.9%</b> | <b>306</b>     | <b>8.0%</b> | <b>319</b>     | <b>8.3%</b> | <b>339</b>     | <b>8.8%</b> |
| Salford                            | 29654          | 30.1%       | 29680          | 30.0%       | 29833          | 30.0%       | 30172          | 30.2%       |

**Source:** Council Tax, Salford City Council

**Figure 9** - Percentage of Households in receipt of council tax and/or housing benefit between 2007 and 2008



**Source:** Council Tax, Salford City Council

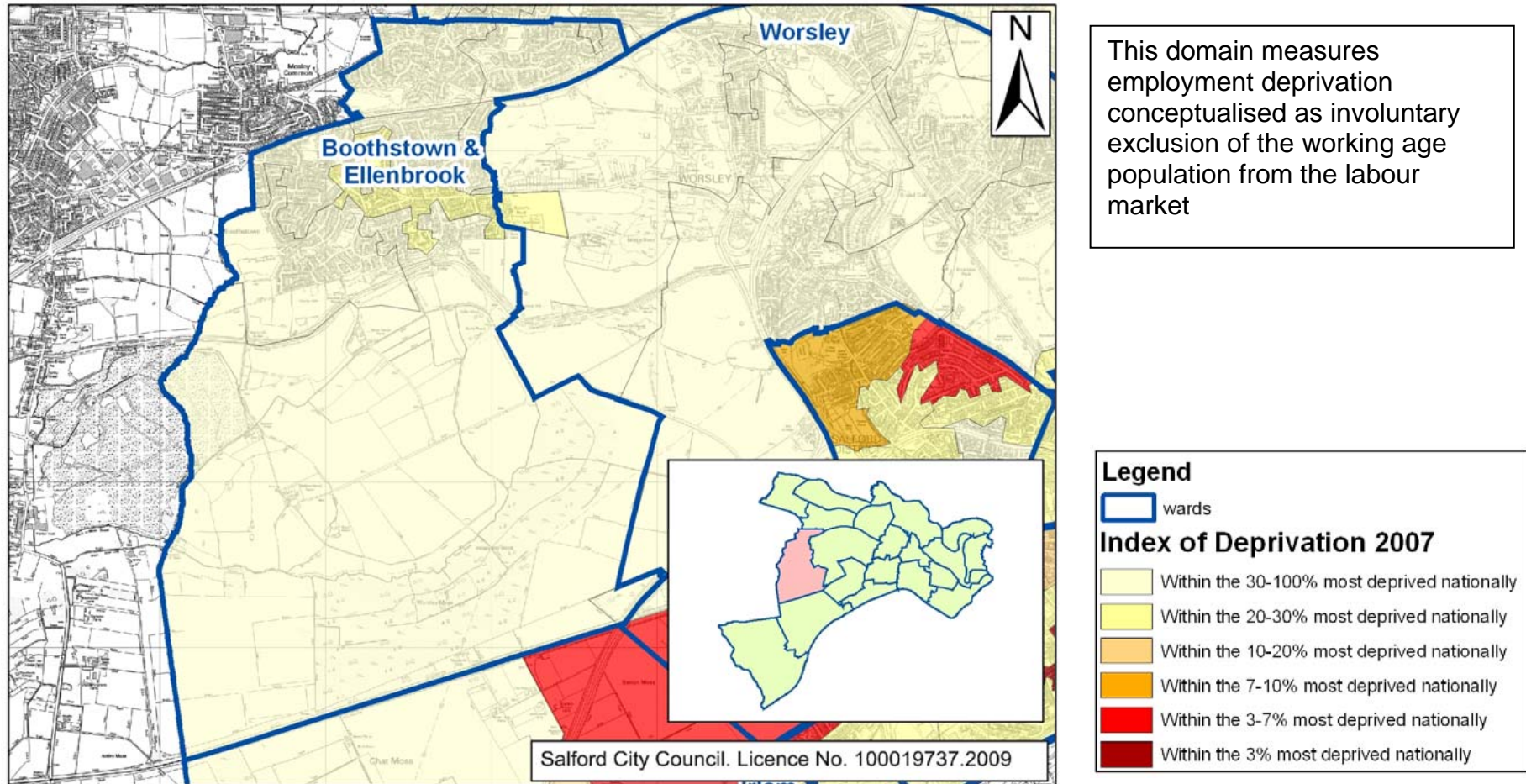
**Table 16 - Lone parents and employment**

|                                    | All lone parents households with dependent children | Male lone parents       |   |   | Female lone parents       |   |   |
|------------------------------------|---|-------------------------|---|---|---------------------------|---|---|
|                                    |   | Total male lone parents | Male lone parents in full time employment | Male lone parents in part time employment | Total female lone parents | Female lone parents in full time employment | Female lone parents in part time employment |
|                                    | No.   | No.                     | No.                                       | No.                                       | No.                       | No.   | No.   |
| <b>Boothstown &amp; Ellenbrook</b> | <b>168</b>  | <b>24</b>               | <b>24</b>                                 | <b>0</b>                                  | <b>142</b>                | <b>80</b>                                   | <b>38</b>                                   |
| Salford                            | 8,143   | 685                     | 390                                       | 42  | 7,416                     | 1,448                                       | 1,841                                       |
| Greater Manchester                 | 83,723  | 7,492                   | 3,816                                     | 499                                       | 76,231                    | 16,296                                      | 19,653                                      |
| North West                         | 215,610   | 18,810                  | 9,815                                     | 1,240                                     | 196,800                   | 40,019                                      | 51,938                                      |
| England                            | 1,311,974   | 125,099                 | 70,377                                    | 8,746                                     | 1,186,875                 | 256,520                                     | 313,426                                     |
|                                    |   | %                       | %   | %   | %                         | %   | %   |
| <b>Boothstown &amp; Ellenbrook</b> |   | <b>100</b>              | <b>100</b>                                | <b>0.0</b>                                | <b>100</b>                | <b>56.3</b>                                 | <b>26.8</b>                                 |
| Salford                            |   | 100                     | 56.9                                      | 6.1                                       | 100                       | 19.5  | 24.8  |
| Greater Manchester                 |   | 100                     | 50.9                                      | 6.7                                       | 100                       | 21.4  | 25.8  |
| North West                         |   | 100                     | 52.2                                      | 6.6                                       | 100                       | 20.3  | 26.4  |
| England                            |   | 100                     | 56.3                                      | 7.0                                       | 100                       | 21.6  | 26.4  |

**Source:** 2001 Census; Office for National Statistics

# Creating prosperity in Salford

**Figure 10 - Employment Domain, Index of Deprivation 2007**



**Source:** Index of Deprivation 2007, Communities and local government

**Table 17 - Economic Activity**

|  | All people<br>16-74 | Part time<br>employees            | Full time<br>employees                         | Self employed                 | Unemployed     | Economically<br>active: full time<br>student | All<br>economically<br>active   |
|--|---------------------|-----------------------------------|--|-------------------------------|----------------|--|---------------------------------|
|  | No.                 | No.                               | No.  | No.                           | No.            | No.  | No.                             |
| <b>Boothstown &amp;<br/>Ellenbrook</b> | <b>7,320</b>        | <b>852</b>                        | <b>3,685</b>                                   | <b>682</b>                    | <b>155</b>     | <b>208</b>                                   | <b>5,582</b>                    |
| Salford                                | 155,379             | 16,431                            | 61,107   | 8,390                         | 5,921          | 4,662  | 96,511                          |
| Greater Manchester                     | 1,781,882           | 201,208                           | 717,618  | 118,533                       | 62,747         | 46,935                                       | 1,147,041                       |
| North West                             | 4,839,669           | 574,505                           | 1,876,205                                      | 343,847                       | 175,549        | 123,080                                      | 3,093,186                       |
| England                                | 35,532,091          | 4,196,041                         | 14,499,241                                     | 2,954,988                     | 1,188,855      | 917,582                                      | 23,756,707                      |
|  | %                   | %                                 | %  | %                             | %              | %  | %                               |
| <b>Boothstown &amp;<br/>Ellenbrook</b> | <b>100</b>          | <b>11.6</b>                       | <b>50.3</b>                                    | <b>9.3</b>                    | <b>2.1</b>     | <b>2.8</b>                                   | <b>76.3</b>                     |
| Salford                                | 100                 | 10.6                              | 39.3   | 5.4                           | 3.8            | 3.0  | 62.1                            |
| Greater Manchester                     | 100                 | 11.3                              | 40.3   | 6.7                           | 3.5            | 2.6  | 64.4                            |
| North West                             | 100                 | 11.9                              | 38.8   | 7.1                           | 3.6            | 2.5  | 63.9                            |
| England                                | 100                 | 11.8                              | 40.8   | 8.3                           | 3.3            | 2.6  | 66.9                            |
|  | All people<br>16-74 | Economically<br>inactive: retired | Economically<br>inactive: full<br>time student | Looking after<br>home/ family | Sick/ disabled | Econ inactive:<br>other                      | All<br>economically<br>inactive |
|  | No.                 | No.                               | No.  | No.                           | No.            | No.  | No.                             |
| <b>Boothstown &amp;<br/>Ellenbrook</b> | <b>7,320</b>        | <b>808</b>                        | <b>227</b>                                     | <b>294</b>                    | <b>294</b>     | <b>115</b>                                   | <b>1,738</b>                    |
| Salford                                | 155,379             | 21,029                            | 7,855  | 9,157                         | 14,802         | 6,028  | 58,871                          |
| Greater Manchester                     | 1,781,882           | 232,635                           | 90,976   | 108,589                       | 139,705        | 62,936                                       | 634,841                         |
| North West                             | 4,839,669           | 691,072                           | 223,770  | 296,065                       | 374,928        | 160,648                                      | 1,746,483                       |
| England                                | 35,532,091          | 4,811,595                         | 1,660,564                                      | 2,316,229                     | 1,884,901      | 1,102,095                                    | 11,775,384                      |
|  | %                   | %                                 | %  | %                             | %              | %  | %                               |
| <b>Boothstown &amp;<br/>Ellenbrook</b> | <b>100</b>          | <b>11.0</b>                       | <b>3.1</b>                                     | <b>4.0</b>                    | <b>4.0</b>     | <b>1.6</b>                                   | <b>23.7</b>                     |
| Salford                                | 100                 | 13.5                              | 5.1  | 5.9                           | 9.5            | 3.9  | 37.9                            |
| Greater Manchester                     | 100                 | 13.1                              | 5.1  | 6.1                           | 7.8            | 3.5  | 35.6                            |
| North West                             | 100                 | 14.3                              | 4.6  | 6.1                           | 7.7            | 3.3  | 36.1                            |
| England                                | 100                 | 13.5                              | 4.7  | 6.5                           | 5.3            | 3.1  | 33.1                            |

Source: 2001 Census; Office for National Statistics

**Table 18 - Unemployment benefit claimants**

|                                    | June 2009  |            | June 2010  |            | Change       |
|------------------------------------|------------|------------|------------|------------|--------------|
|                                    | No.        | %          | No.        | %.         | %            |
| <b>Boothstown &amp; Ellenbrook</b> | <b>154</b> | <b>2.8</b> | <b>100</b> | <b>1.8</b> | <b>-35.1</b> |
| Salford                            | 7,291      | 7.7        | 7,286      | 7.7        | 0.0          |
| Greater Manchester                 | 78,003     | 7.0        | 74,446     | 6.6        | -4.6         |
| North West                         | 194,338    | 6.4        | 177,275    | 5.9        | -8.8         |
| UK                                 | 1,553,256  | 5.7        | 1,444,096  | 5.3        | -7.0         |

**Source:** NOMIS

**Table 19 - Employment by industrial sector**

|                                    | All people in employment 16-74 | Agriculture; hunting; forestry | Fishing    | Mining & quarrying | Manufacturing | Electricity; gas & water supply | Construction | Wholesale & retail trade; vehicle repair | Hotels & catering |
|------------------------------------|--------------------------------|--------------------------------|------------|--------------------|---------------|---------------------------------|--------------|--|-------------------|
|                                    | No.                            | No.                            | No.        | No.                | No.           | No.                             | No.          | No.                                      | No.               |
| <b>Boothstown &amp; Ellenbrook</b> | <b>5,403</b>                   | <b>22</b>                      | <b>0</b>   | <b>13</b>          | <b>769</b>    | <b>48</b>                       | <b>309</b>   | <b>886</b>                               | <b>199</b>        |
| Salford                            | 89,877                         | 380                            | 3          | 87                 | 12,923        | 668                             | 6,163        | 16,689                                   | 4,574             |
| Greater Manchester                 | 1,077,347                      | 5,366                          | 38         | 950                | 178,837       | 8,174                           | 72,560       | 199,233                                  | 50,330            |
| North West                         | 2,900,020                      | 35,520                         | 361        | 4,649              | 489,833       | 22,451                          | 188,285      | 516,809                                  | 148,857           |
| England                            | 22,441,498                     | 326,117                        | 5,396      | 55,481             | 3,328,437     | 159,619                         | 1,515,996    | 3,782,043                                | 1,061,617         |
|                                    | %                              | %                              | %          | %                  | %             | %                               | %            | %  | %                 |
| <b>Boothstown &amp; Ellenbrook</b> | <b>100</b>                     | <b>0.4</b>                     | <b>0.0</b> | <b>0.2</b>         | <b>14.2</b>   | <b>0.9</b>                      | <b>5.7</b>   | <b>16.4</b>                              | <b>3.7</b>        |
| Salford                            | 100                            | 0.4                            | 0.0        | 0.1                | 14.4          | 0.7                             | 6.9          | 18.6                                     | 5.1               |
| Greater Manchester                 | 100                            | 0.5                            | 0.0        | 0.1                | 16.6          | 0.8                             | 6.7          | 18.5                                     | 4.7               |
| North West                         | 100                            | 1.2                            | 0.0        | 0.2                | 16.9          | 0.8                             | 6.5          | 17.8                                     | 5.1               |
| England                            | 100                            | 1.5                            | 0.0        | 0.2                | 14.8          | 0.7                             | 6.8          | 16.9                                     | 4.7               |

|                                    | All people in employment 16-74 | Transport, storage & communication | Financial intermediation | Real estate; renting & business activities | Public administration & defence | Education  | Health & social work | Other      |
|------------------------------------|--------------------------------|------------------------------------|--------------------------|--|---------------------------------|------------|----------------------|------------|
|                                    | No.                            | No.                                | No.                      | No.  | No.                             | No.        | No.                  | No.        |
| <b>Boothstown &amp; Ellenbrook</b> | <b>5,403</b>                   | <b>358</b>                         | <b>362</b>               | <b>772</b>                                 | <b>330</b>                      | <b>496</b> | <b>608</b>           | <b>232</b> |
| Salford                            | 89,877                         | 6,894                              | 3,932                    | 11,402                                     | 4,206                           | 6,838      | 10,692               | 4,427      |
| Greater Manchester                 | 1,077,347                      | 78,747                             | 44,191                   | 127,043                                    | 52,194                          | 85,810     | 125,350              | 48,524     |
| North West                         | 2,900,020                      | 196,827                            | 109,212                  | 313,188                                    | 164,592                         | 230,506    | 347,245              | 131,685    |
| England                            | 22,441,498                     | 1,590,031                          | 1,078,082                | 2,964,468                                  | 1,270,755                       | 1,736,497  | 2,400,698            | 1,166,261  |
|                                    | %                              | %                                  | %                        | %  | %                               | %          | %                    | %          |
| <b>Boothstown &amp; Ellenbrook</b> | <b>100</b>                     | <b>6.6</b>                         | <b>6.7</b>               | <b>14.3</b>                                | <b>6.1</b>                      | <b>9.2</b> | <b>11.3</b>          | <b>4.3</b> |
| Salford                            | 100                            | 7.7                                | 4.4                      | 12.7                                       | 4.7                             | 7.6        | 11.9                 | 4.9        |
| Greater Manchester                 | 100                            | 7.3                                | 4.1                      | 11.8                                       | 4.8                             | 8.0        | 11.6                 | 4.5        |
| North West                         | 100                            | 6.8                                | 3.8                      | 10.8                                       | 5.7                             | 7.9        | 12.0                 | 4.5        |
| England                            | 100                            | 7.1                                | 4.8                      | 13.2                                       | 5.7                             | 7.7        | 10.7                 | 5.2        |

Source: 2001 Census; Office for National Statistics

**Table 20 – Occupation Groups**

|                                    | All people 16 - 74 in employment | Managers and senior officials | Professional occupations | Associate professional & technical occupations | Administrative & secretarial occupations | Skilled trade occupations | Personal service occupations | Sales & customer service occupations | Process: plant and machine operatives | Elementary occupations |
|------------------------------------|----------------------------------|-------------------------------|--------------------------|--|--|---------------------------|------------------------------|--------------------------------------|---------------------------------------|------------------------|
|                                    | No.                              | No.                           | No.                      | No.  | No.                                      | No.                       | No.                          | No.                                  | No.                                   | No.                    |
| <b>Boothstown &amp; Ellenbrook</b> | <b>5,406</b>                     | <b>1,151</b>                  | <b>821</b>               | <b>853</b>                                     | <b>837</b>                               | <b>436</b>                | <b>307</b>                   | <b>341</b>                           | <b>295</b>                            | <b>365</b>             |
| Salford                            | 89,931                           | 10,959                        | 8,199                    | 11,172   | 13,554                                   | 9,504                     | 7,242                        | 7,755                                | 8,885                                 | 12,654                 |
| Greater Manchester                 | 1,077,347                        | 143,178                       | 112,219                  | 138,875  | 146,744                                  | 120,461                   | 79,982                       | 89,779                               | 108,451                               | 137,658                |
| North West                         | 2,900,020                        | 397,264                       | 304,030                  | 369,984  | 379,135                                  | 338,979                   | 221,142                      | 241,371                              | 285,056                               | 363,059                |
| England                            | 22,441,498                       | 3,424,899                     | 2,515,679                | 3,104,993                                      | 3,004,721                                | 2,591,875                 | 1,545,367                    | 1,717,796                            | 1,889,126                             | 2,647,042              |
|                                    | %                                | %                             | %                        | %  | %  | %                         | %                            | %                                    | %                                     | %                      |
| <b>Boothstown &amp; Ellenbrook</b> | <b>100</b>                       | <b>21.3</b>                   | <b>15.2</b>              | <b>15.8</b>                                    | <b>15.5</b>                              | <b>8.1</b>                | <b>5.7</b>                   | <b>6.3</b>                           | <b>5.5</b>                            | <b>6.8</b>             |
| <i>Salford</i>                     | <i>100</i>                       | <i>12.2</i>                   | <i>9.1</i>               | <i>12.4</i>                                    | <i>15.1</i>                              | <i>10.6</i>               | <i>8.1</i>                   | <i>8.6</i>                           | <i>9.9</i>                            | <i>14.1</i>            |
| Greater Manchester                 | 100                              | 13.3                          | 10.4                     | 12.9   | 13.6                                     | 11.2                      | 7.4                          | 8.3                                  | 10.1                                  | 12.8                   |
| North West                         | 100                              | 13.7                          | 10.5                     | 12.8   | 13.1                                     | 11.7                      | 7.6                          | 8.3                                  | 9.8                                   | 12.5                   |
| England                            | 100                              | 15.3                          | 11.2                     | 13.8   | 13.4                                     | 11.5                      | 6.9                          | 7.7                                  | 8.4                                   | 11.8                   |

**Source:** 2001 Census; Office for National Statistics

**Table 21 - Hours worked**

|                                    | All males aged 16 - 74 in employment | 1-5 hours per week | 6-15 hours per week | 16-30 hours per week | 31-37 hours per week | 38-48 hours per week | 49 hours per week or more |
|------------------------------------|--------------------------------------|--------------------|---------------------|----------------------|----------------------|----------------------|---------------------------|
|                                    | No.                                  | No.                | No.                 | No.                  | No.                  | No.                  | No.                       |
| <b>Boothstown &amp; Ellenbrook</b> | <b>2,890</b>                         | <b>0</b>           | <b>78</b>           | <b>145</b>           | <b>453</b>           | <b>1,470</b>         | <b>744</b>                |
| Salford                            | 48,530                               | 212                | 1,363               | 3,173                | 8,723                | 26,124               | 8,932                     |
| Greater Manchester                 | 577,240                              | 2,660              | 15,234              | 38,604               | 102,065              | 306,865              | 111,812                   |
| North West                         | 1,545,789                            | 7,899              | 42,431              | 101,564              | 273,297              | 800,243              | 320,355                   |
| England                            | 12,155,166                           | 62,475             | 359,106             | 750,241              | 1,790,321            | 6,250,252            | 2,942,771                 |
|                                    | %                                    | %                  | %                   | %                    | %                    | %                    | %                         |
| <b>Boothstown &amp; Ellenbrook</b> | <b>100</b>                           | <b>0.0</b>         | <b>2.7</b>          | <b>5.0</b>           | <b>15.7</b>          | <b>50.9</b>          | <b>25.7</b>               |
| <i>Salford</i>                     | <i>100</i>                           | <i>0.4</i>         | <i>2.8</i>          | <i>6.5</i>           | <i>18.0</i>          | <i>53.8</i>          | <i>18.4</i>               |
| <i>Greater Manchester</i>          | <i>100</i>                           | <i>0.5</i>         | <i>2.6</i>          | <i>6.7</i>           | <i>17.7</i>          | <i>53.2</i>          | <i>19.4</i>               |
| <i>North West</i>                  | <i>100</i>                           | <i>0.5</i>         | <i>2.7</i>          | <i>6.6</i>           | <i>17.7</i>          | <i>51.8</i>          | <i>20.7</i>               |
| <i>England</i>                     | <i>100</i>                           | <i>0.5</i>         | <i>3.0</i>          | <i>6.2</i>           | <i>14.7</i>          | <i>51.4</i>          | <i>24.2</i>               |
|                                    | All females in employment aged 16-74 | 1-5 hours per week | 6-15 hours per week | 16-30 hours per week | 31-37 hours per week | 38-48 hours per week | 49 hours per week or more |
|                                    | No.                                  | No.                | No.                 | No.                  | No.                  | No.                  | No.                       |
| <b>Boothstown &amp; Ellenbrook</b> | <b>2,513</b>                         | <b>32</b>          | <b>197</b>          | <b>658</b>           | <b>675</b>           | <b>743</b>           | <b>209</b>                |
| Salford                            | 41,448                               | 612                | 3,976               | 11,980               | 11,114               | 11,674               | 2,091                     |
| Greater Manchester                 | 500,107                              | 7,440              | 49,520              | 145,364              | 132,010              | 138,489              | 27,284                    |
| North West                         | 1,354,231                            | 23,521             | 150,469             | 409,763              | 333,999              | 357,895              | 78,584                    |
| England                            | 10,286,332                           | 192,479            | 1,252,151           | 2,914,758            | 2,285,236            | 2,930,722            | 710,986                   |
|                                    | %                                    | %                  | %                   | %                    | %                    | %                    | %                         |
| <b>Boothstown &amp; Ellenbrook</b> | <b>100</b>                           | <b>1.3</b>         | <b>7.8</b>          | <b>26.2</b>          | <b>26.9</b>          | <b>29.6</b>          | <b>8.3</b>                |
| <i>Salford</i>                     | <i>100</i>                           | <i>1.5</i>         | <i>9.6</i>          | <i>28.9</i>          | <i>26.8</i>          | <i>28.2</i>          | <i>5.0</i>                |
| <i>Greater Manchester</i>          | <i>100</i>                           | <i>1.5</i>         | <i>9.9</i>          | <i>29.1</i>          | <i>26.4</i>          | <i>27.7</i>          | <i>5.5</i>                |
| <i>North West</i>                  | <i>100</i>                           | <i>1.7</i>         | <i>11.1</i>         | <i>30.3</i>          | <i>24.7</i>          | <i>26.4</i>          | <i>5.8</i>                |
| <i>England</i>                     | <i>100</i>                           | <i>1.9</i>         | <i>12.2</i>         | <i>28.3</i>          | <i>22.2</i>          | <i>28.5</i>          | <i>6.9</i>                |

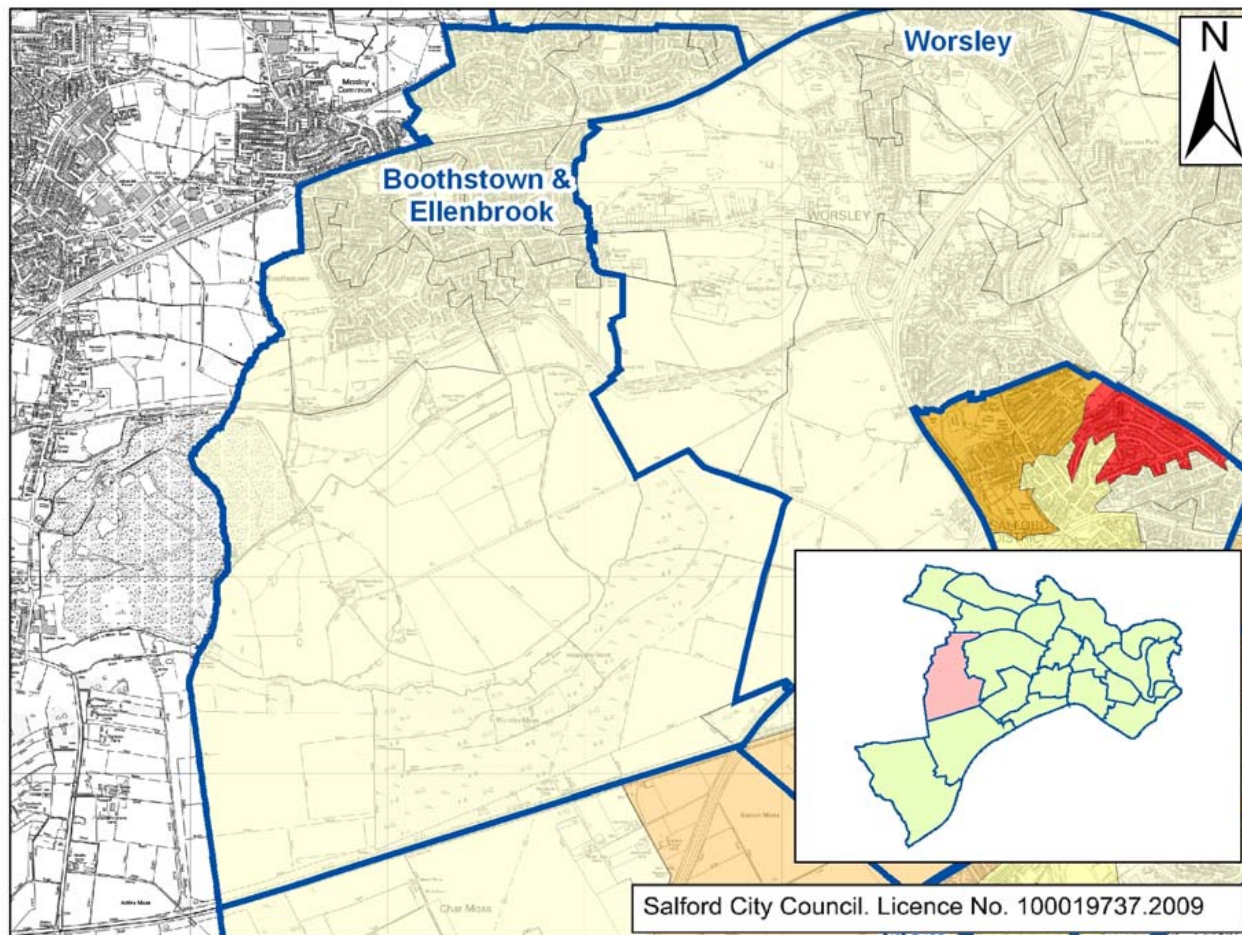
Source: 2001 Census; Office for National Statistics

**Table 22 - Cars or vans (Owned or available for use within the household)**

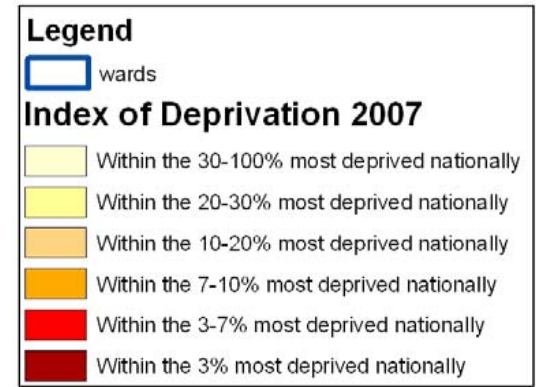
|                                    | All households | No cars     | One car      | Two cars     | Three cars | Four cars or more | All cars or vans in the area      |
|------------------------------------|----------------|-------------|--------------|--------------|------------|-------------------|-----------------------------------|
|                                    | No.            | No.         | No.          | No.          | No.        | No.               | No.                               |
| <b>Boothstown &amp; Ellenbrook</b> | <b>3,861</b>   | <b>411</b>  | <b>1,489</b> | <b>1,622</b> | <b>279</b> | <b>61</b>         | <b>5,836</b>                      |
| Salford                            | 94,208         | 36,918      | 39,514       | 14,887       | 2,288      | 601               | 78,913                            |
| Greater Manchester                 | 1,040,231      | 341,276     | 447,551      | 209,014      | 33,622     | 8,768             | 1,004,862                         |
| North West                         | 2,812,789      | 849,769     | 1,224,554    | 605,586      | 104,120    | 28,760            | 2,874,991                         |
| England                            | 20,451,427     | 5,488,386   | 8,935,718    | 4,818,581    | 924,289    | 284,453           | 22,607,629                        |
|                                    | %              | %           | %            | %            | %          | %                 | <i>Average cars per household</i> |
| <b>Boothstown &amp; Ellenbrook</b> | <b>100</b>     | <b>10.6</b> | <b>38.6</b>  | <b>42.0</b>  | <b>7.2</b> | <b>1.6</b>        | <b>1.5</b>                        |
| <i>Salford</i>                     | <i>100</i>     | <i>39.2</i> | <i>41.9</i>  | <i>15.8</i>  | <i>2.4</i> | <i>0.6</i>        | <i>0.8</i>                        |
| <i>Greater Manchester</i>          | <i>100</i>     | <i>32.8</i> | <i>43.0</i>  | <i>20.1</i>  | <i>3.2</i> | <i>0.8</i>        | <i>1.0</i>                        |
| <i>North West</i>                  | <i>100</i>     | <i>30.2</i> | <i>43.5</i>  | <i>21.5</i>  | <i>3.7</i> | <i>1.0</i>        | <i>1.0</i>                        |
| <i>England</i>                     | <i>100</i>     | <i>26.8</i> | <i>43.7</i>  | <i>23.6</i>  | <i>4.5</i> | <i>1.4</i>        | <i>1.1</i>                        |

**Source:** 2001 Census; Office for National Statistics

**Figure 11 - Income Domain, Index of Deprivation 2007**

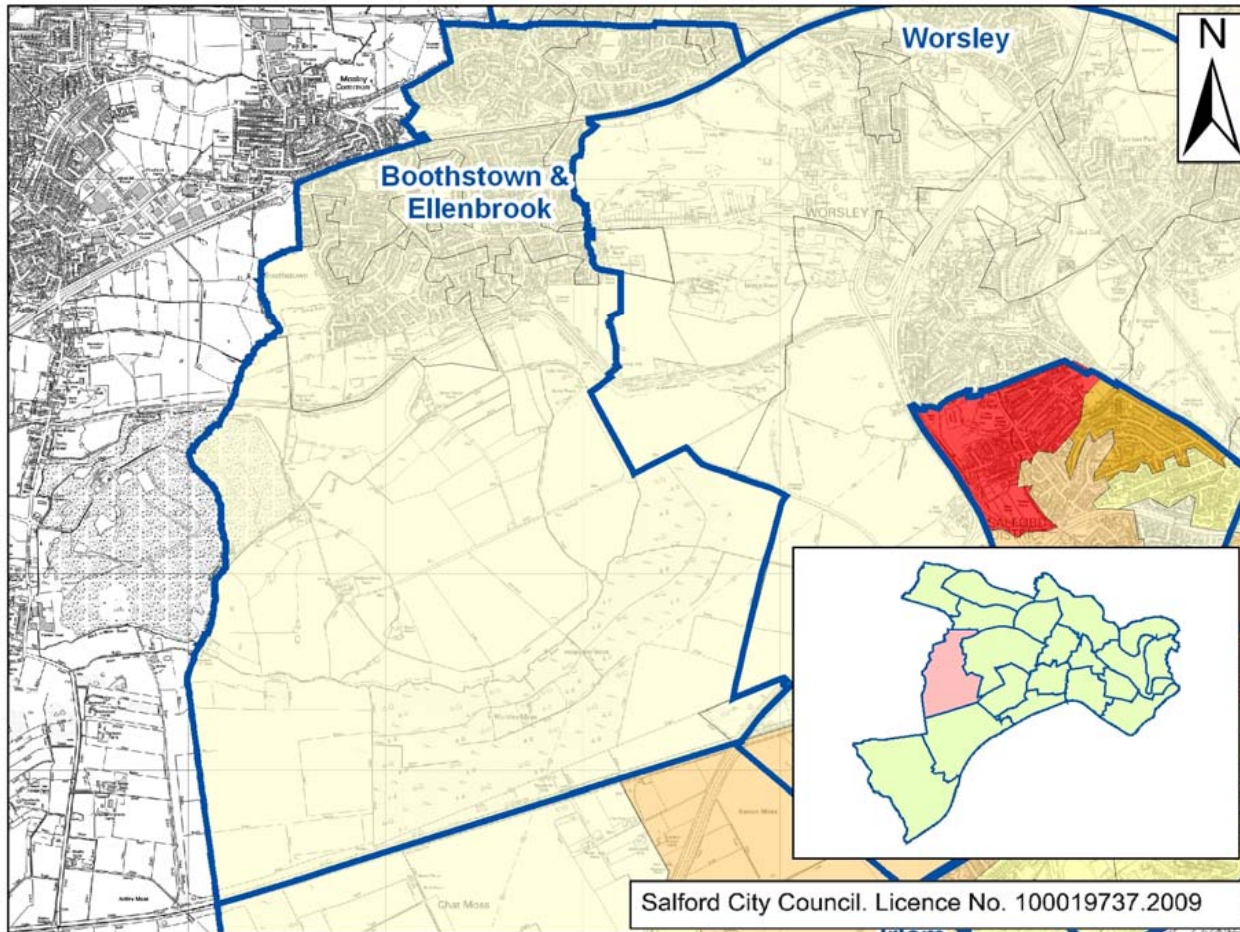


The purpose of this Domain is to capture the proportion of the population experiencing income deprivation in an area.



**Source:** Index of Deprivation 2007, Communities and local government

**Figure 12 - Income deprivation affecting children Index, Index of Deprivation 2007**

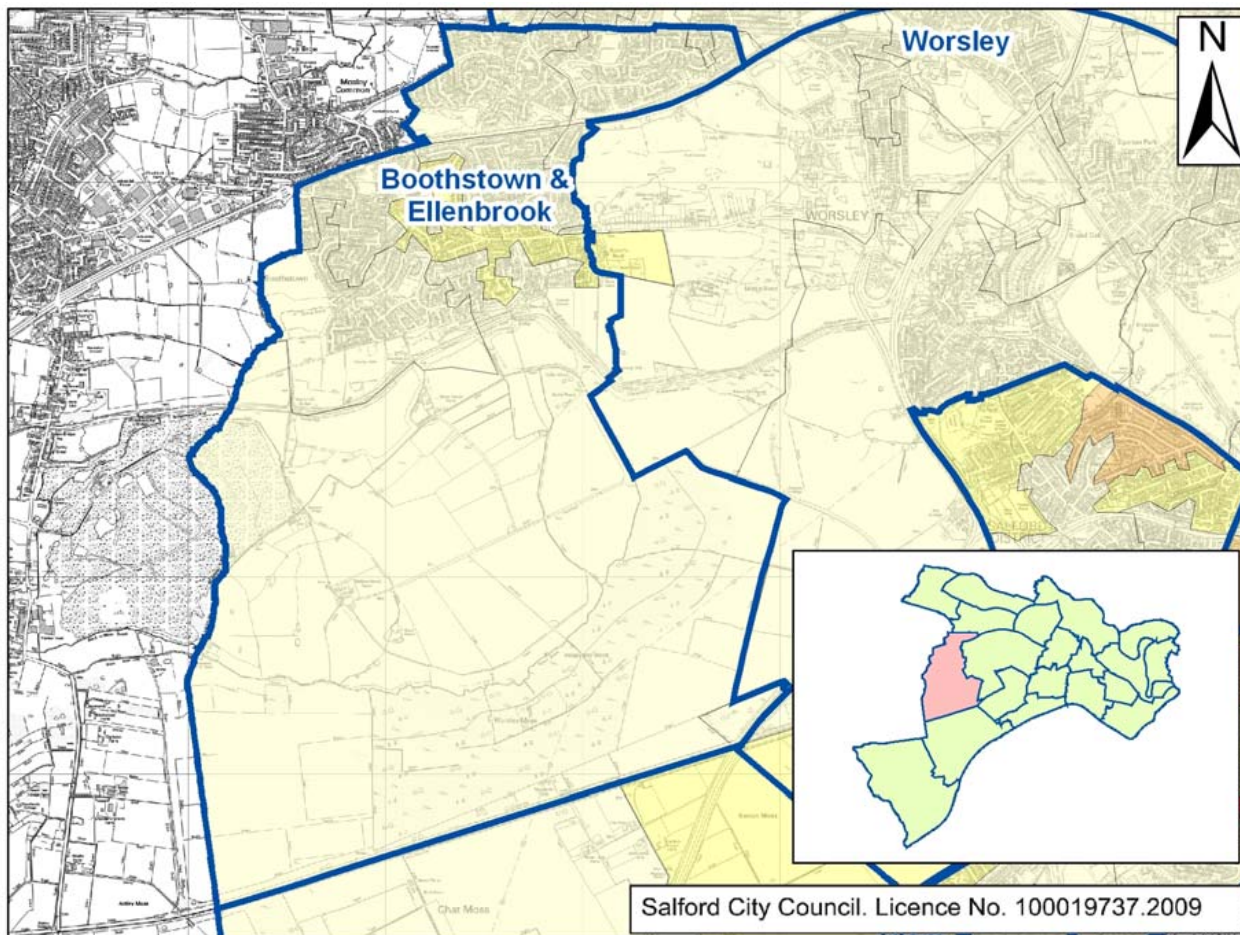


This subset of the income deprivation domain that shows the percentage of children in each Lower Super Output Area that live in families that are income deprived.



**Source:** Index of Deprivation 2007, Communities and local government

**Figure 13 - Income deprivation affecting older people Index, Index of Deprivation 2007**



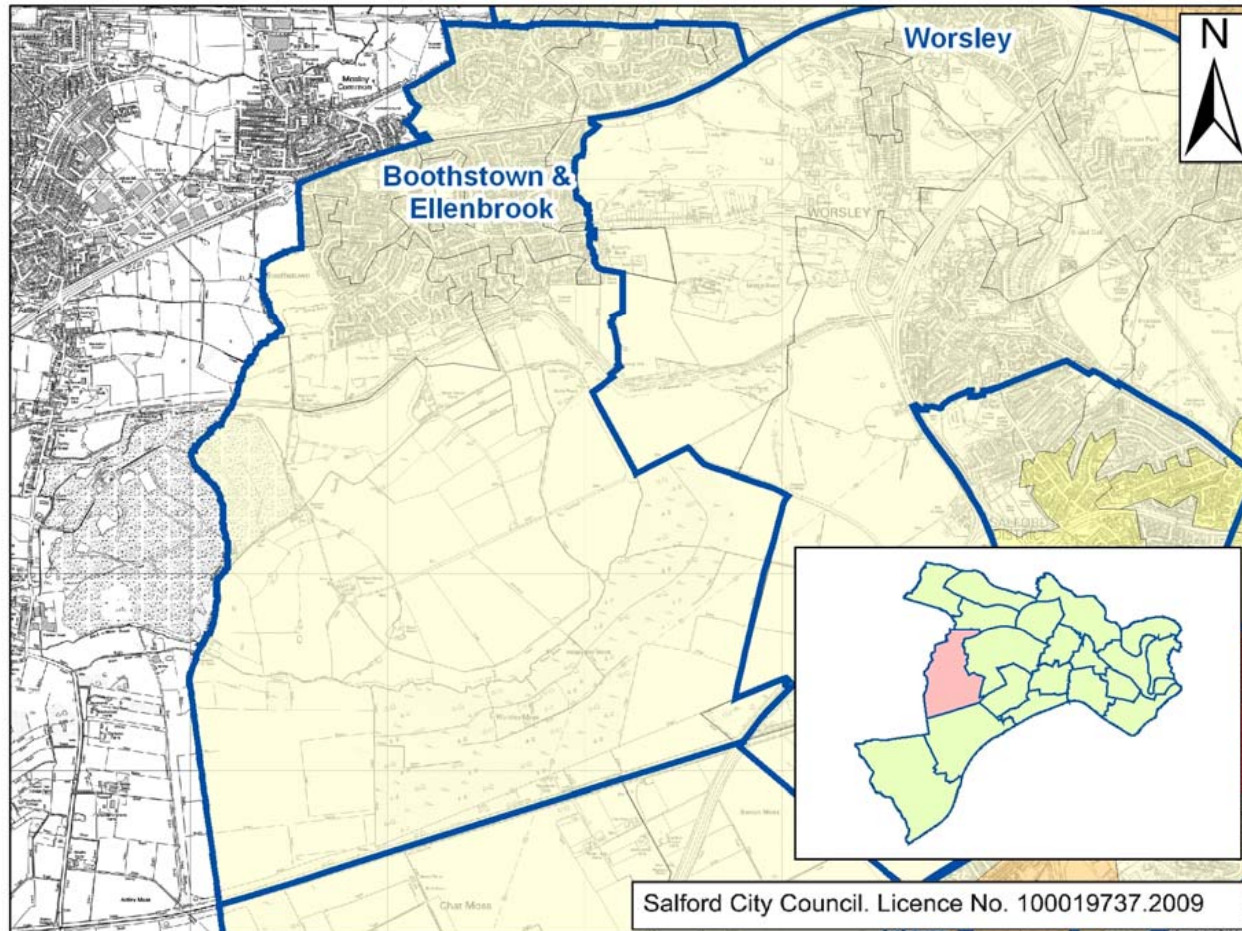
This subset of the income deprivation domain shows the percentage of a lower super output areas population aged 60 and over that are income deprived.



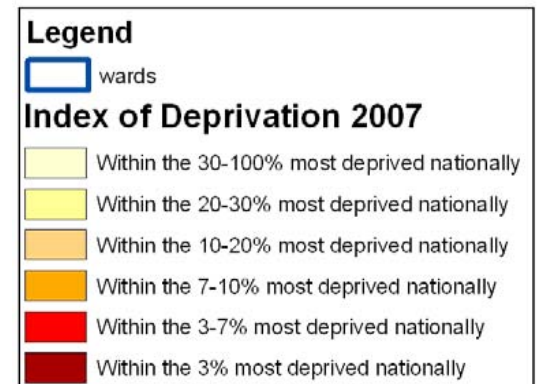
**Source:** Index of Deprivation 2007, Communities and local government

# Enhancing Life in Salford

**Figure 14 - Living environment, Index of Deprivation 2007**



This Domain focuses on deprivation with respect to the characteristics of the living environment. It comprises two sub-domains: the 'indoors' living environment which measures the quality of housing and the 'outdoors' living environment, which contains two measures about air quality and road traffic accidents, which contains two measures about air quality and road traffic accidents.



**Source:** Index of Deprivation 2007, Communities and local government

**Table 23 – Household spaces and accommodation type**

|                                    | Total household spaces | Detached house or bungalow | Semi-detached house or bungalow | Terraced house or bungalow | Flat or maisonette in purpose built block | Flat or maisonette in converted or shared house, including bedsit | Flat or maisonette in commercial building | Caravan or other mobile or temporary structure |
|------------------------------------|------------------------|----------------------------|---------------------------------|----------------------------|---|---|---|--|
|                                    | No.                    | No.                        | No.                             | No.                        | No.                                       | No.   | No.                                       | No.  |
| <b>Boothstown &amp; Ellenbrook</b> | <b>3,900</b>           | <b>1,761</b>               | <b>1,516</b>                    | <b>540</b>                 | <b>54</b>                                 | <b>3</b>  | <b>18</b>                                 | <b>2</b>                                       |
| Salford                            | 98,786                 | 8,509                      | 36,546                          | 32,124                     | 18,777                                    | 1,803   | 856                                       | 134  |
| Greater Manchester                 | 1,092,419              | 144,491                    | 415,904                         | 357,516                    | 139,550                                   | 24,125  | 9,849                                     | 984  |
| North West                         | 2,950,241              | 520,125                    | 1,078,301                       | 936,267                    | 301,931                                   | 75,661  | 29,738                                    | 8,218  |
| England                            | 21,262,825             | 4,786,456                  | 6,713,183                       | 5,494,033                  | 2,967,790                                 | 968,266   | 244,179                                   | 88,918   |
|                                    | %                      | %                          | %                               | %                          | %   | %   | %   | %  |
| <b>Boothstown &amp; Ellenbrook</b> | <b>100</b>             | <b>45.2</b>                | <b>38.9</b>                     | <b>13.9</b>                | <b>1.4</b>                                | <b>0.1</b>  | <b>0.5</b>                                | <b>0.1</b>                                     |
| Salford                            | 100                    | 8.6                        | 37.0                            | 32.5                       | 19.0                                      | 1.8   | 0.9                                       | 0.1  |
| Greater Manchester                 | 100                    | 13.2                       | 38.1                            | 32.7                       | 12.8                                      | 2.2   | 0.9                                       | 0.1  |
| North West                         | 100                    | 17.6                       | 36.5                            | 31.7                       | 10.2                                      | 2.6   | 1.0                                       | 0.3  |
| England                            | 100                    | 22.5                       | 31.6                            | 25.8                       | 14.0                                      | 4.6   | 1.1                                       | 0.4  |

**Source:** 2001 Census; Office for National Statistics

**Table 24 - Tenure (households)**

|                                    | Tenure                 | Number of Properties |             |             | Percentage     |                |                |
|------------------------------------|------------------------|----------------------|-------------|-------------|----------------|----------------|----------------|
|                                    |                        | 2006                 | 2007        | 2008        | 2006           | 2007           | 2008           |
| <b>Boothstown &amp; Ellenbrook</b> | <b>RSL</b>             | <b>8</b>             | <b>8</b>    | <b>8</b>    | <b>0.20%</b>   | <b>0.20%</b>   | <b>0.20%</b>   |
|                                    | <b>Local Authority</b> | <b>94</b>            | <b>93</b>   | <b>92</b>   | <b>2.37%</b>   | <b>2.34%</b>   | <b>2.31%</b>   |
|                                    | <b>Private</b>         | <b>3856</b>          | <b>3871</b> | <b>3875</b> | <b>97.20%</b>  | <b>97.46%</b>  | <b>97.48%</b>  |
|                                    | <b>All Properties</b>  | <b>3967</b>          | <b>3972</b> | <b>3975</b> | <b>100.00%</b> | <b>100.00%</b> | <b>100.00%</b> |
| Salford                            | RSL                    | 5931                 | 5765        | 5966        | 5.80%          | 5.61%          | 5.72%          |
|                                    | Local Authority        | 26008                | 25452       | 25280       | 25.45%         | 24.78%         | 24.23%         |
|                                    | Private                | 70241                | 71486       | 73075       | 68.74%         | 69.60%         | 70.05%         |
|                                    | All Properties         | 102180               | 102703      | 104321      | 100.00%        | 100.00%        | 100.00%        |

<sup>1</sup> Private includes owner occupier and privately rented

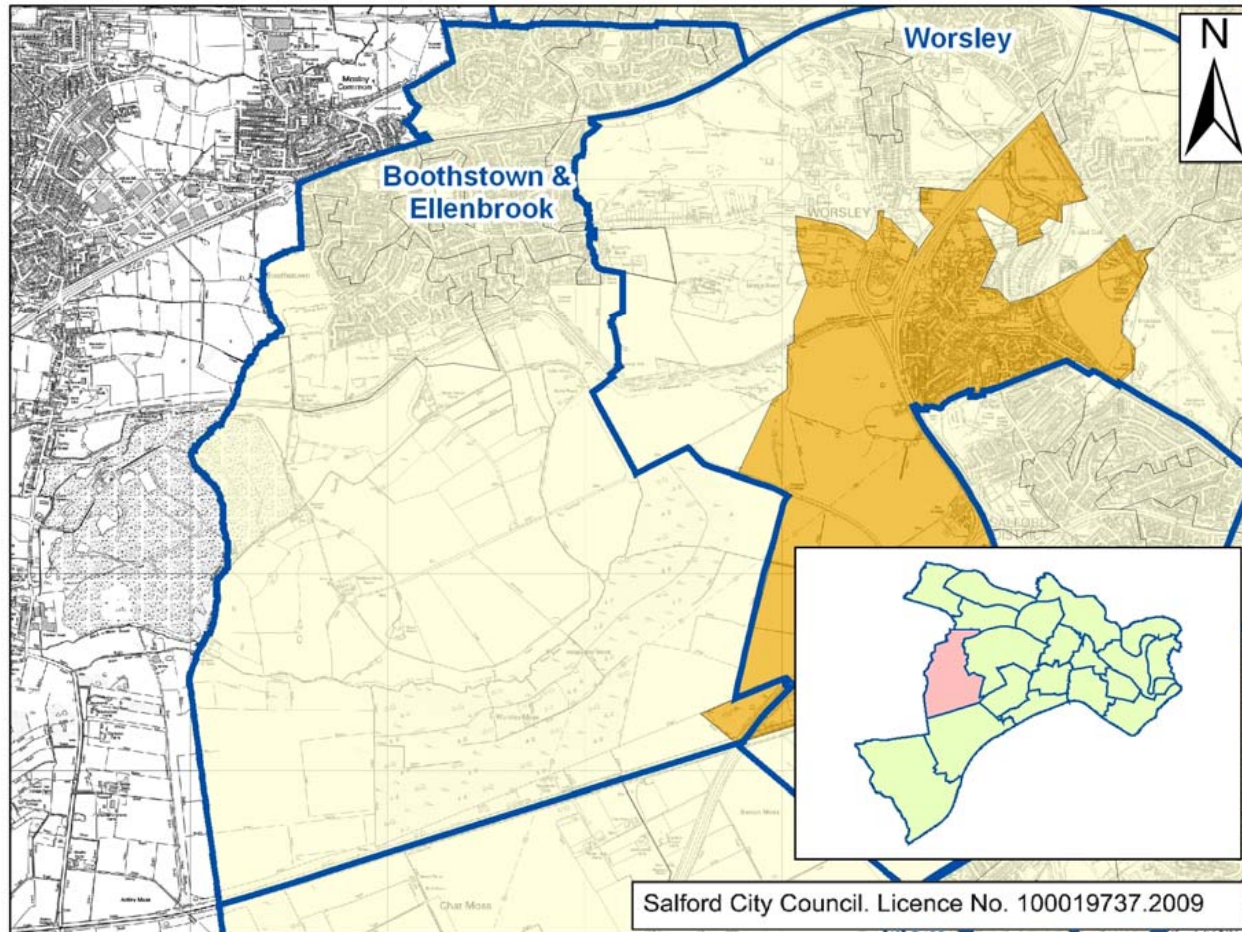
**Source:** RSL Stock List (RSL data), Saffron Stock Extract (Local Authority) and Council Tax (Private & All Properties) 2006 - 2008

**Table 25** - Change in the number of dwellings (by new build, change of use and demolition) per financial year (April 1998 – March 2008)

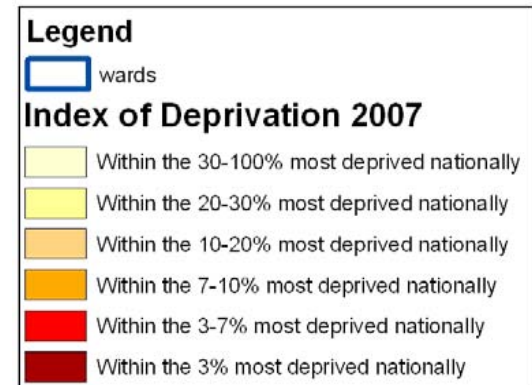
|                                    | 1998-99 | 1999-00 | 2000-01 | 2001-02 | 2002-03 | 2003-04 | 2004-05 | 2005-06 | 2006-07 | 2007-08 | Total 1998-2008 |
|------------------------------------|---------|---------|---------|---------|---------|---------|---------|---------|---------|---------|-----------------|
| <b>Boothstown &amp; Ellenbrook</b> |         |         |         |         |         |         |         |         |         |         |                 |
| <b>Stock additions</b>             | 158     | 89      | 50      | 10      | 0       | 5       | 19      | 4       | 1       | 2       | 338             |
| <b>Stock reductions</b>            | 11      | 29      | 95      | 61      | 0       | 0       | 1       | 7       | 1       | 0       | 205             |
| <b>Net dwelling change</b>         | 147     | 60      | -45     | -51     | 0       | 5       | 18      | -3      | 0       | 2       | 133             |
| Salford                            |         |         |         |         |         |         |         |         |         |         |                 |
| Stock additions                    | 685     | 607     | 789     | 520     | 677     | 1,165   | 1,614   | 1,162   | 2,237   | 2,800   | 12,256          |
| Stock reductions                   | 136     | 366     | 271     | 614     | 525     | 344     | 761     | 709     | 513     | 194     | 4,433           |
| Net dwelling change                | 549     | 241     | 518     | -94     | 152     | 821     | 853     | 453     | 1,724   | 2,606   | 7,823           |

**Source:** Residential Development and Land Supply Report 2007/08, Salford City Council

**Figure 15 - Barriers to housing and service domain, Index of Deprivation 2007**



The purpose of this Domain is to measure barriers to housing and key local services. The indicators fall into two sub-domains: 'geographical barriers' and 'wider barriers' which also includes issues relating to access to housing, such as affordability.



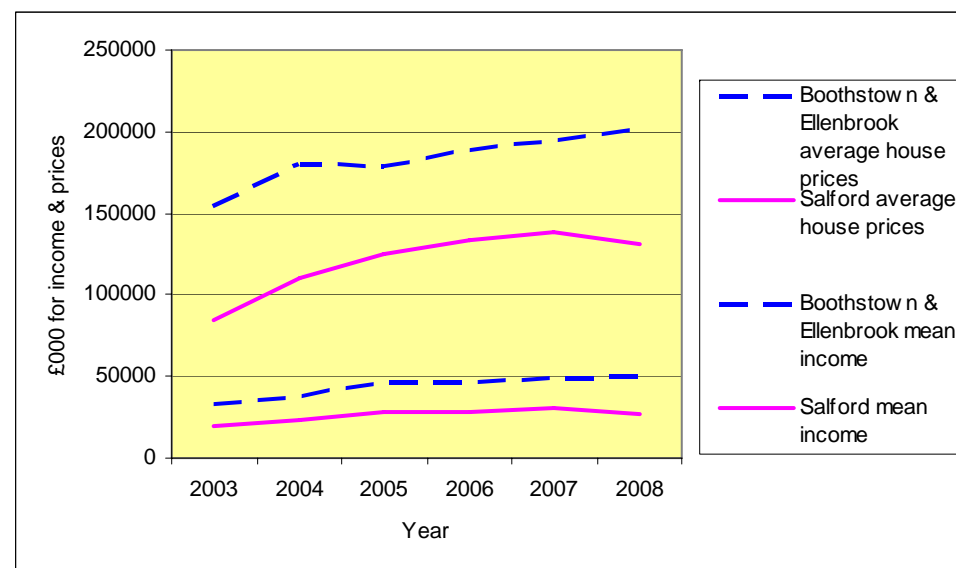
**Source:** Index of Deprivation 2007, Communities and local government

**Table 26 - Affordability ratio (average house prices divided by mean household income) 2003 – 2008**

|   | 2003            | 2004            | 2005            | 2006            | 2007            | 2008            | Change 2003-2008 |
|---|-----------------|-----------------|-----------------|-----------------|-----------------|-----------------|------------------|
| <b>Boothstown &amp; Ellenbrook average house prices</b>         | <b>£154,740</b> | <b>£180,466</b> | <b>£179,096</b> | <b>£188,177</b> | <b>£194,436</b> | <b>£201,855</b> | <b>30.4%</b>     |
| <b>Boothstown &amp; Ellenbrook mean income</b>                  | <b>£33,581</b>  | <b>£38,540</b>  | <b>£46,334</b>  | <b>£47,137</b>  | <b>£49,027</b>  | <b>50,048</b>   | <b>49.0%</b>     |
| <b>Boothstown &amp; Ellenbrook ratio income to house prices</b> | <b>4.6</b>      | <b>4.7</b>      | <b>3.9</b>      | <b>4.0</b>      | <b>4.0</b>      | <b>4.0</b>      | <b>-0.6</b>      |
| Salford average house prices                                    | £84,909.73      | £110,397.14     | £125,572.00     | £133,362.55     | £138,940.39     | £130,903        | 54.2%            |
| Salford mean income   | £19,418         | £23,425         | £28,362         | £28,400         | £30,912         | £31,513         | 62.3%            |
| Salford ratio income to house prices                            | 4.4             | 4.7             | 4.4             | 4.7             | 4.5             | 4.2             | -0.2             |

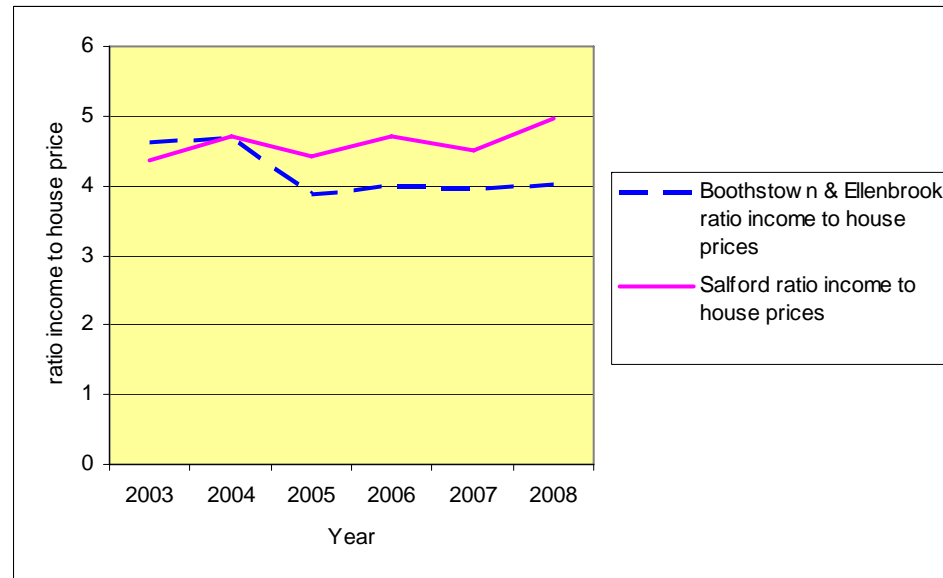
**Source:** Land Registry (House Price data) and CACI (Mean Income)

**Figure 16 - Mean household Income and house prices 2003 - 2008**



**Source:** Land Registry (House Price data) and CACI (Mean Income)

**Figure 17 - Affordability Ratio 2003 - 2008**



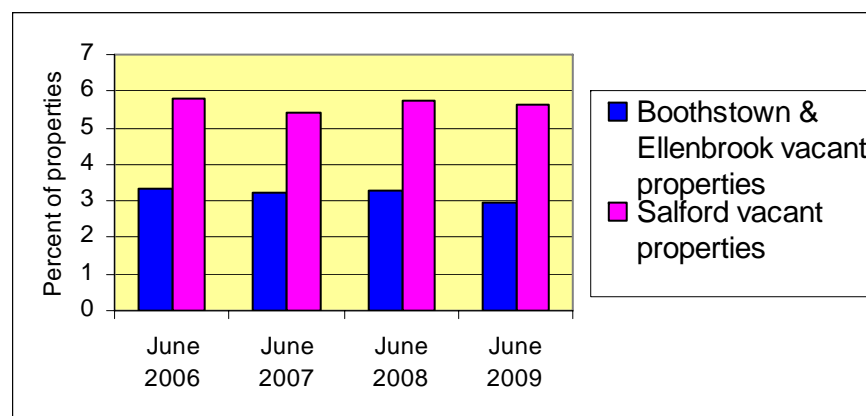
**Source:** Land Registry (House Price data) and CACI (Mean Income)

**Table 27** - Vacant dwellings: all sectors 2006 – 2009

| Total at the end of                                  | June 2006    | June 2007    | June 2008    | June 2009   |
|--|--------------|--------------|--------------|-------------|
|  | No.          | No.          | No.          | No.         |
| <b>Boothstown &amp; Ellenbrook vacant properties</b> | <b>132</b>   | <b>128</b>   | <b>130</b>   | <b>118</b>  |
| <b>Boothstown &amp; Ellenbrook properties</b>        | <b>3,970</b> | <b>3,973</b> | <b>3,976</b> | <b>3976</b> |
| Salford vacant properties                            | 5912         | 5,579        | 5,999        | 5971        |
| Salford properties                                   | 102421       | 102,890      | 104,934      | 106045      |
|  | %            | %            | %            | %           |
| <b>Boothstown &amp; Ellenbrook vacant properties</b> | <b>3.3</b>   | <b>3.2</b>   | <b>3.3</b>   | <b>3.0</b>  |
| <i>Salford vacant properties</i>                     | <i>5.8</i>   | <i>5.4</i>   | <i>5.7</i>   | <i>5.6</i>  |

**Source:** Council Tax Data, Salford City Council

**Figure 18** - Vacant dwellings trend: all Sectors 2006 - 2009



**Source:** Council Tax Data, Salford City Council

**Table 28 - Household amenities**

|                                    | All households | With central heating and sole use of bath/shower and toilet | Without central heating or sole use of bath/shower and toilet | Without central heating with sole use of bath/shower and toilet | With central heating without sole use of bath/shower and toilet | Households with an occupancy rating of -1 or less |
|------------------------------------|----------------|---|---|---|---|---|
|                                    | No.            | No.   | No.   | No.   | No.   | No.   |
| <b>Boothstown &amp; Ellenbrook</b> | <b>3,864</b>   | <b>3,779</b>  | <b>0</b>  | <b>82</b>   | <b>0</b>  | <b>43</b>   |
| Salford                            | 94,237         | 87,388  | 77  | 6,597   | 225   | 5,513   |
| Greater Manchester                 | 1,040,231      | 948,994   | 1,180   | 87,382  | 2,675   | 66,698  |
| North West                         | 2,812,789      | 2,473,718   | 3,690   | 328,956   | 6,425   | 152,248   |
| England                            | 20,451,427     | 18,640,577  | 32,739  | 1,711,405   | 66,706  | 1,457,512   |
|                                    | %              | %   | %   | %   | %   | %   |
| <b>Boothstown &amp; Ellenbrook</b> | <b>100</b>     | <b>97.8</b>   | <b>0.0</b>  | <b>2.1</b>  | <b>0.0</b>  | <b>1.1</b>  |
| <i>Salford</i>                     | <i>100</i>     | <i>92.7</i>   | <i>0.1</i>  | <i>7.0</i>  | <i>0.2</i>  | <i>5.9</i>  |
| <i>Greater Manchester</i>          | <i>100</i>     | <i>91.2</i>   | <i>0.1</i>  | <i>8.4</i>  | <i>0.3</i>  | <i>6.4</i>  |
| <i>North West</i>                  | <i>100</i>     | <i>87.9</i>   | <i>0.1</i>  | <i>11.7</i>   | <i>0.2</i>  | <i>5.4</i>  |
| <i>England</i>                     | <i>100</i>     | <i>91.1</i>   | <i>0.2</i>  | <i>8.4</i>  | <i>0.3</i>  | <i>7.1</i>  |

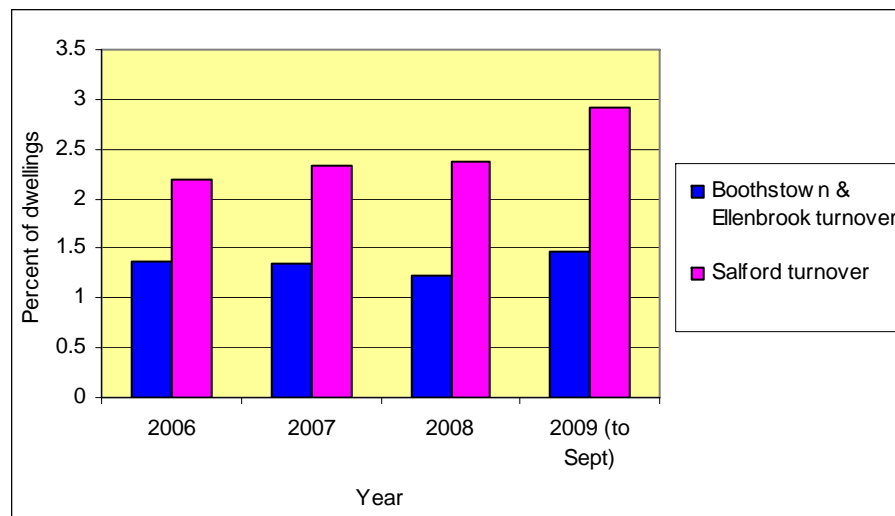
Source: 2001 Census; Office for National Statistics

**Table 29** - Changes in household occupancy (Average monthly turnover)

| Average monthly turnover in the year                     | 2006         | 2007         | 2008         | 2009 (to Sept) |
|--|--------------|--------------|--------------|----------------|
|  | No.          | No.          | No.          | No.            |
| <b>Boothstown &amp; Ellenbrook</b>                       | <b>54.0</b>  | <b>53.3</b>  | <b>49.0</b>  | <b>58.6</b>    |
| <b>Boothstown &amp; Ellenbrook average of properties</b> | <b>3,970</b> | <b>3,973</b> | <b>3,976</b> | <b>3,976</b>   |
| Salford changes  | 2,244        | 2,401        | 2,478        | 3,089          |
| Salford average of properties                            | 102,203      | 103,060      | 104,783      | 106,025        |
|  | %            | %            | %            | %              |
| <b><i>Boothstown &amp; Ellenbrook turnover</i></b>       | <b>1.4</b>   | <b>1.3</b>   | <b>1.2</b>   | <b>1.5</b>     |
| <i>Salford turnover</i>                                  | 2.2          | 2.3          | 2.4          | 2.9            |

**Source:** Council Tax Data, Salford City Council

**Figure 19** - Changes in Figure household occupancy trend (Average monthly turnover)



**Source:** Council Tax Data, Salford City Council

Data compiled by;  
Information & Research Group  
Spatial Planning Section  
Sustainable Regeneration Directorate  
Salford City Council  
Salford Civic Centre  
Chorley Road, Swinton  
M27 5BY

Enquiries to:  
Nick Ash • tel: 0161 793 3660 • <mailto:nick.ash@salford.gov.uk>

## Salford City Council

### **Spatial Planning**

Sustainable Regeneration Directorate

Salford Civic Centre

Chorley Road

Swinton

Salford

M27 5BY

**Telephone : 0161 793 3660**