

USEFUL CONTACT DETAILS

Family Support
Swinton Families
0161 794 2485

Community Safety
Salford anti-social behaviour reporting
0161 609 6544

24-hour National Domestic Violence helpline
0808 2000 247

Crimestoppers
0800 555 111

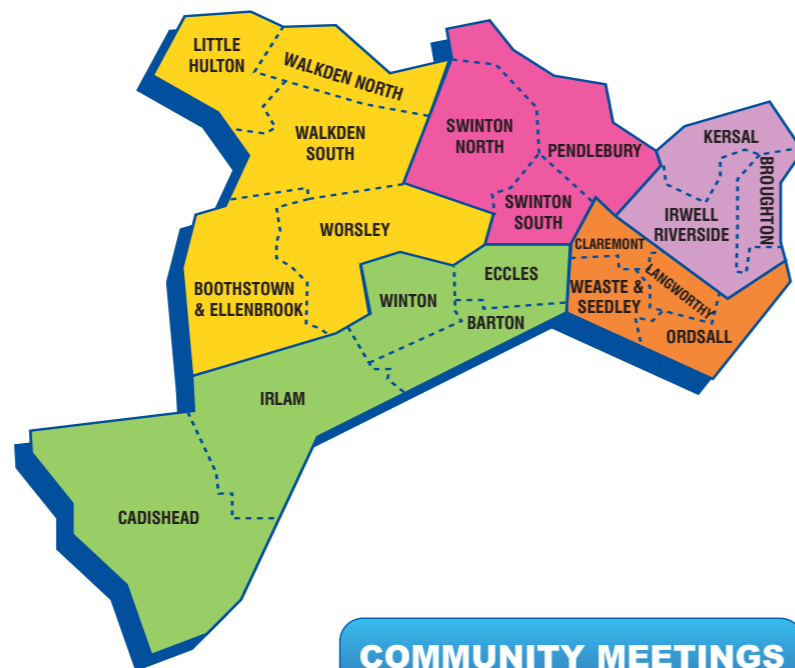
Libraries
Swinton Library Clifton Library
0161 793 3570 0161 794 1591

City West Housing Trust
Rent and general enquiries
0161 605 7230

Out of hours emergency number
0161 794 8888

**For non-emergency calls or to report a crime
call 0161 872 5050 Use 999 only in emergencies
where there is a threat to life or crime in progress**

Minicom: 0161 872 6633 Web: gmp.police.uk



YOUR NEAREST POLICE STATION



Swinton Police Station
Chorley Road
Swinton
M27 6BA

Mon:	24 hours
Tues:	24 hours
Wed:	24 hours
Thurs:	24 hours
Fri:	24 hours
Sat:	24 hours
Sun:	24 hours
Bank Holidays:	24 hours

COMMUNITY MEETINGS

When: 6th December
7pm – 8pm

Where: Sindsley Court
Moss Lane, Wardley

When: 9th December
6pm – 7pm

Where: Clifton Youth Centre
The Green

When: 20th January
6pm - 7pm

Where: Clifton Youth Centre
The Green

When: 3rd March
6pm – 7pm

Where: Clifton Youth Centre
The Green

For more details of police
surgery and PACT meeting
dates, log onto

www.gmp.police.uk



GREATER MANCHESTER
POLICE



SALFORD NORTH NEIGHBOURHOOD NEWS

Winter 2010

KEEP BURGLARS AT BAY THIS WINTER

Winter is here and while we are preparing for the colder months, burglars and thieves will also be looking out for an opportunity to take our property. By following simple measures, we can help keep our homes and valuables secure.

- Keep doors and windows shut and locked even when you are in. One in three burglaries are down to thieves getting in through open doors and windows.
- Leave a light on when you go out so it gives the impression that someone is home. This will make burglars think twice about targeting your home. Also set your alarm.
- If your child goes to university and is leaving their accommodation for the holidays, make sure they don't leave any valuables behind and bring them home.
- If you are defrosting your car, stay with the vehicle, don't go back inside your house. An

opportunistic thief will steal your car and the items inside.

- Remove all valuables out of your car. If you have been Christmas shopping, don't leave your presents in the boot or in the back seat of the vehicle.
- Make sure you don't put Christmas presents under the tree and in view of the window. This will attract unwanted guests.
- When you are disposing of empty boxes, make sure you take them straight to the tip and don't leave them in wheelie bins. You could be advertising the valuables you have inside.
- Register your valuables on immobilise.com, a free service where you can put details of possessions on a national database that police can access and compare against items that have been found or recovered from suspected criminals.




**Inspector
Rob Findlow**

We are working to tackle crime and anti-social behaviour to make your area a safer place to live and work.


To help us identify the issues in your area please get in touch and tell us what matters to you.

I hope you and your family have a pleasant and safe Christmas, New Year and winter. Remember, keep all doors and windows locked to keep out unwanted visitors.

 **0161 856 5228**

 salfordnorth.neighbourhood@gmp.police.uk

 www.gmp.police.uk/neighbourhoodpolicing

 To attend a meeting, see page 4 for meetings in your area

Finally, why not stop and say hello when we're out and about - we're here to listen to you!

Salford North Neighbourhood Policing Team Tel: 0161 856 5228

See inside to find out what police are tackling in your area

DAWN WATCH LAUNCHED

Police in Salford are calling on early risers across the county to join them in the fight against crime by watching out for and reporting suspicious activity.

Taxi drivers, milk and newspaper delivery staff, shift workers and others whose work or lifestyle involves them being out and about in the small hours are being urged to join Dawn Watch to be extra eyes and ears for the police.

People interested in the scheme can join Dawn Watch through their Neighbourhood Policing Team. They are also invited to provide contact details so local officers can get in touch to enlist their help and local knowledge in investigating crimes.

Police say that though the scheme does not give members any special

legal powers the information they provide can help bring criminals to justice. They are also keen to stress that people should not put themselves at any risk either in observing or reporting crime.

Members get a handy wallet or purse size membership card that features contact details for the police and Crimestoppers as well as tips on what to look for and make a note of when they suspect they are observing criminal activity.

These include the date, time and location of incidents and names, addresses and telephone numbers of suspects. Personal details such as height, build, hair, colouring and clothing are also useful as are the makes, models, colours and registration details of vehicles that are involved.



Assistant Chief Constable Terry Sweeney

YOUR PRIORITIES

What: Speeding vehicles
Where: Off Bolton Road into Swinton Hall Road during school hours
Update: Police are patrolling the area during peak times and advising motorists

What: Antisocial behaviour
Where: Rear of Gaskell Street during the night
Update: High visibility patrols are dispersing groups of youths

What: Antisocial behaviour & motorbike riding
Where: Victoria Park and Swinton shopping precinct on Friday nights and weekend
Update: Police officers are taking action as part of Operation Brocade

For a full list of local policing priorities please visit gmp.police.uk or call us on **0161 856 5228**

OUR SERVICE PROMISE

We have made a promise to provide you with the best possible service and to work with you to make Greater Manchester a safer place.

Officers and staff are working to ensure that your views count and the Service Promise outlines what you can expect from your police force. It also outlines the service you should expect when you contact GMP.

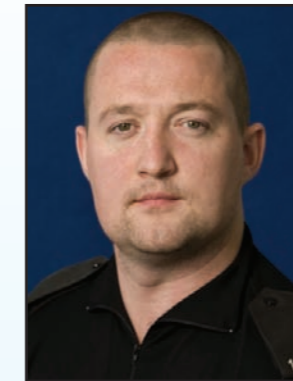
Find out more at gmp.police.uk

YOUR LOCAL TEAM

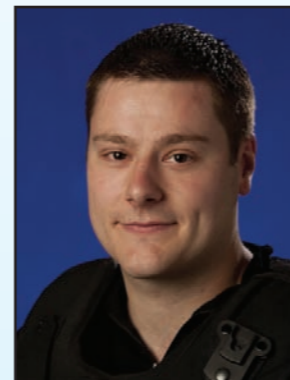
Here are just some of your neighbourhood officers who are serving your community



PC Iain Fletcher



PC Sean Long



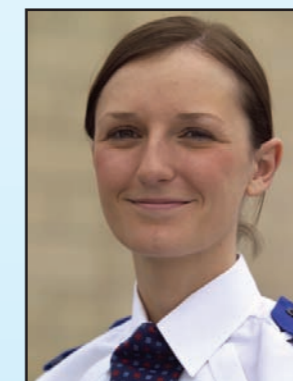
PC Stuart Richmond



PC Judith Downs



PCSO Carl Watkiss



PCSO Sam Mason



PCSO Janet Cassidy



PCSO Darren Betts

YOU SAID, WE SAID...

You wanted off-road bikes tackling and us to stop youths drinking alcohol in the Victoria Park area

WE DID...

Officers are patrolling the area, seizing alcohol and issue fixed penalty notices.

You wanted a reduction in antisocial behaviour outside shops on Manchester Road

WE DID...

Details are being taken of offenders and large groups are being dispersed

You wanted us to deal with off-road bikes on the Moss

WE DID...

Signs are now in place warning offenders of the consequences and restricted barriers have been erected