



Salford City Council Walkden North Ward Profile

This ward profile is one of a series of 20 that provides an overview of major issues within Salford. The ward is highlighted in the map on the front page. The profile is based on statistical information available to the council from a range of sources including the 2001 Census and the 2007 Index of Deprivation. The profile looks at situations in the ward in relation to the rest of the city, the region and the country.

The data was compiled by;
Information & Research Group,
Spatial Planning Section
Sustainable Regeneration Directorate
Salford City Council
Salford Civic Centre,
Chorley Road, Swinton M27 5BY

Maps are reproduced from Ordnance Survey under licence No. 100019737.2009

© The information may be reproduced subject to crown copyright rules.

Salford's wards were revised in 2004. Census data in this report relates to new wards and has been compiled using rebased 2001 Census data. Rebased data uses proportioned Output Area level data and not the individual source returns. All the information in the profile is for new wards.

In the 2001 Census very small numbers were masked for confidentiality. In some tables numbers do not add to the total because of this. Definitions used in the 2001 Census are available from <http://www.statistics.gov.uk/statbase/Product.asp?vlnk=12951>.

The 2007 Index of Deprivation is a Super Output Area (SOA) level measure of multiple deprivation and is made up of seven SOA level domain indices. There are two supplementary indices (Income Deprivation Affecting Children and Income Deprivation Affecting Older People).

Definitions and further data are available from <http://www.communities.gov.uk/index.asp?id=1128442>.

Enquiries to:

Nick Ash • tel: 0161 793 3660 • mail to: nick.ash@salford.gov.uk

Demographics

Figure 1 - Multiple Deprivation in Salford, Index of Deprivation 2007	1
Figure 2 - Multiple Deprivation, Index of Deprivation 2007	2
Table 1 - Population Density	3
Table 2 - Population by broad age group, 2007	4
Figure 3 - Indicative population change by Salford wards 2001 - 2007	5
Table 3 - Country of birth	6
Table 4 - Religion	6
Table 5 - Ethnic groups	7
Table 6 - Household Composition	8

Improving health in Salford

Figure 4 - Health deprivation and Disability domain, Index of Deprivation 2007	9
Table 7 - Health and limiting long term illness	10
Table 8 - Providing unpaid care	11
Table 9 - Percentage of live births with a low birth weight (less than 2500 grams) 2006 - 2008	12
Table 10 - Mortality Rates (all ages) by all causes 2005 to 2007	12

Reducing crime in Salford

Figure 5 - Crime Domain, Index of Deprivation 2007	13
Figure 6- Total recorded crime rates 2006 - 2008	14
Figure 7- Burglary and Vehicle crime rates 2006 - 2008	15

Encouraging learning, leisure and creativity in Salford

Figure 8 - Education, Skills and Training domain, Index of Deprivation 2007	16
Table 11 - Qualifications	17
Table 12 - Key Stage 2 Pupil attainment by place of residence 2008	18
Table 13 - Percentage of pupils gaining 5 or more GCSE's at level A*-C	18

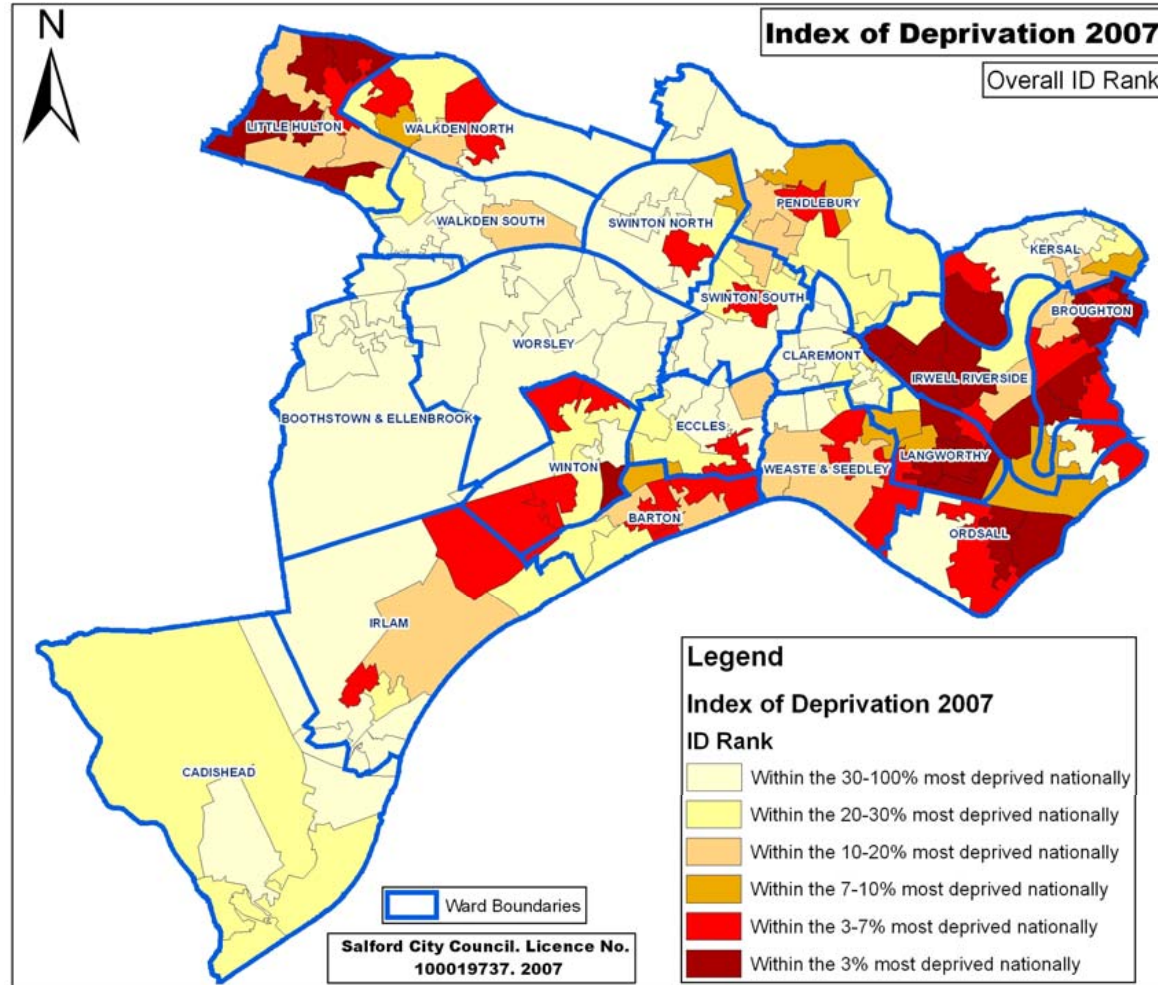
Promoting inclusion in Salford

Table 14 - Socio-economic class	19
Table 15 - Households in receipt of council tax and/or housing benefit	20
Figure 9 - Percentage of Households in receipt of council tax and/or housing benefit between 2007 and 2008	20

Table 16 Lone parents and employment	21
Creating prosperity in Salford	
Figure 10 - Employment Domain, Index of Deprivation 2007	22
Table 17 - Economic Activity	23
Table 18 - Unemployment Benefit claimants	24
Table 19 - Employment by industrial sector	25
Table 20 – Occupation Groups	26
Table 21 - Hours worked	27
Table 22 - Cars or vans (Owned or available for use within the household)	28
Figure 11 - Income Domain, Index of Deprivation 2007	29
Figure 12 - Income deprivation affecting children Index, Index of Deprivation 2007	30
Figure 13 - Income deprivation affecting older people Index, Index of Deprivation 2007	31
Enhancing Life in Salford	
Figure 14 - Living environment, Index of Deprivation 2007	32
Table 23 – Household spaces and accommodation type	33
Table 24 - Tenure (households)	34
Table 25 - Change in the number of dwellings (by new build, change of use and demolition) per financial year	35
Figure 15 - Barriers to housing and service domain, Index of Deprivation 2007	36
Table 26 - Affordability ratio (Average house prices divided by mean household income) 2003 - 2008	37
Figure 16 - Mean household income and house prices 2003 - 2008	37
Figure 17 - Affordability Ratio 2003 - 2008	38
Table 27 - Vacant dwellings: all sectors 2006 - 2009	39
Figure 18 - Vacant dwellings trend: all sectors 2006 - 2009	39
Table 28 - Household amenities	40
Table 29 - Changes in household occupancy (Average monthly turnover)	41
Figure 19 - Changes in household occupancy trend (Average monthly turnover)	41

Demographics

Figure 1 - Multiple Deprivation in Salford, Index of Deprivation 2007

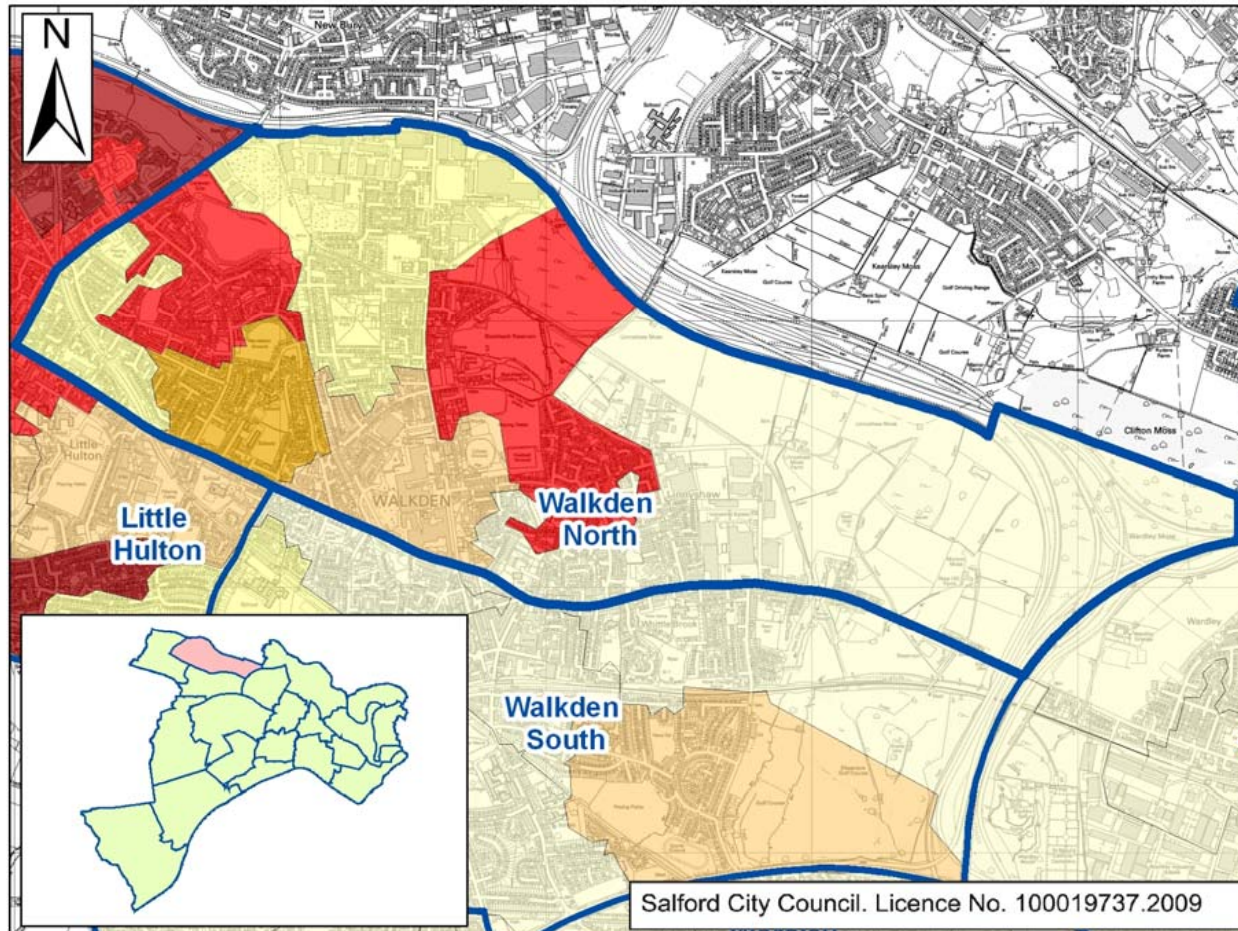


The index of multiple deprivation is a weighted combination of the seven individual deprivation domains (excluding the two additional indexes). The weightings are as follows;

- Income = 22.5%
- Employment = 22.5%
- Health & Disability = 13.5%
- Education Skills & Training = 13.5%
- Barriers to Housing & Services = 9.3%
- Crime = 9.3%
- Living Environment = 9.3%

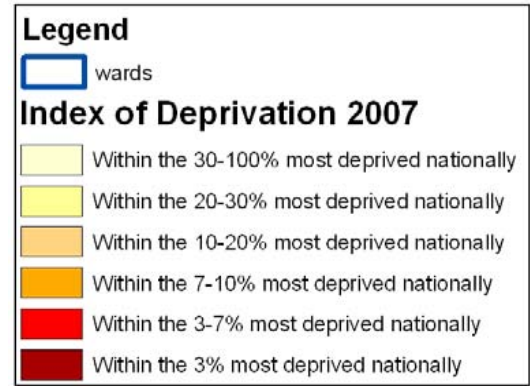
Source: Index of Deprivation 2007, Communities and local government

Figure 2 - Multiple Deprivation, Index of Deprivation 2007



The index of multiple deprivation is a weighted combination of the seven individual deprivation domains (excluding the two additional indexes). The weightings are as follows;

Income = 22.5%
 Employment = 22.5%
 Health & Disability = 13.5%
 Education Skills & Training = 13.5%
 Barriers to Housing & Services = 9.3%
 Crime = 9.3%
 Living Environment = 9.3%



Source: Index of Deprivation 2007, Communities and local government

Table 1 - Population Density (Area in Hectares)

Population	11,318
Area	447.56
Density ¹	25.3
Greenbelt	135.13
Urban density ²	36.2

¹Number of persons as a proportion of the ward area

²Number of persons as a proportion of the urban area of the ward: excludes greenbelt

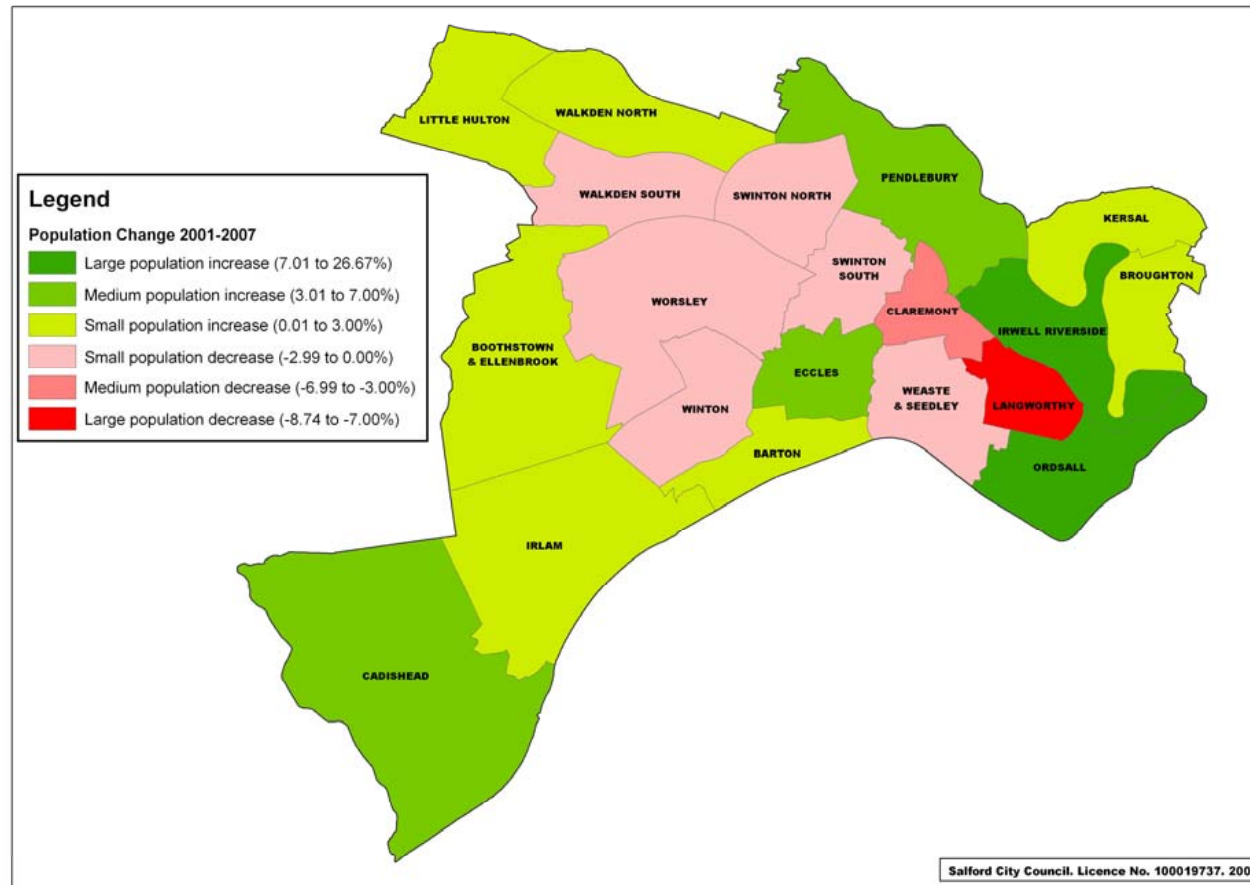
Source: 2007 population estimates, Office for National Statistics

Table 2 - Population by broad age group, 2007

	All people	Persons aged 0-4	Persons aged 5-9	Persons aged 10-14	Persons aged 15-19	Persons aged 20-24	Persons aged 25-29	Persons aged 30-44
	No	No	No	No	No	No	No	No
Walkden North	11,318	782	640	750	771	983	762	2,374
Salford	219,178	13,412	11,392	12,778	15,076	19,949	17,090	45,889
Greater Manchester	2,562,200	162,500	147,200	158,400	178,500	197,600	181,600	552,900
North West	6,864,300	402,400	385,100	427,200	475,400	483,800	419,100	1,423,800
England	51,092,000	3,038,400	2,869,300	3,091,500	3,354,100	3,457,900	3,357,700	11,102,400
	%	%	%	%	%	%	%	%
Walkden North	100	6.9	5.7	6.6	6.8	8.7	6.7	21.0
<i>Salford</i>	<i>100</i>	<i>6.1</i>	<i>5.2</i>	<i>5.8</i>	<i>6.9</i>	<i>9.1</i>	<i>7.8</i>	<i>20.9</i>
<i>Greater Manchester</i>	<i>100</i>	<i>6.3</i>	<i>5.7</i>	<i>6.2</i>	<i>7.0</i>	<i>7.7</i>	<i>7.1</i>	<i>21.6</i>
<i>North West</i>	<i>100</i>	<i>5.9</i>	<i>5.6</i>	<i>6.2</i>	<i>6.9</i>	<i>7.0</i>	<i>6.1</i>	<i>20.7</i>
<i>England</i>	<i>100</i>	<i>5.9</i>	<i>5.6</i>	<i>6.1</i>	<i>6.6</i>	<i>6.8</i>	<i>6.6</i>	<i>21.7</i>
	All people	Persons aged 45-59	Persons aged 60-64	Persons aged 65-69	Persons aged 70-74	Persons aged 75-79	Persons aged 80-84	Persons aged 85+
	No	No	No	No	No	No	No	No
Walkden North	11,318	1,999	563	401	375	349	282	287
Salford	219,178	39,080	11,002	9,000	8,428	6,672	4,864	4,546
Greater Manchester	2,562,200	471,700	135,700	107,200	91,900	74,200	54,700	48,100
North West	6,864,300	1,338,700	394,800	315,100	273,700	224,400	161,100	139,700
England	51,092,000	9,757,600	2,903,700	2,233,100	1,959,400	1,647,100	1,217,800	1,102,000
	%	%	%	%	%	%	%	%
Walkden North	100	17.7	5.0	3.5	3.3	3.1	2.5	2.5
<i>Salford</i>	<i>100</i>	<i>17.8</i>	<i>5.0</i>	<i>4.1</i>	<i>3.8</i>	<i>3.0</i>	<i>2.2</i>	<i>2.1</i>
<i>Greater Manchester</i>	<i>100</i>	<i>18.4</i>	<i>5.3</i>	<i>4.2</i>	<i>3.6</i>	<i>2.9</i>	<i>2.1</i>	<i>1.9</i>
<i>North West</i>	<i>100</i>	<i>19.5</i>	<i>5.8</i>	<i>4.6</i>	<i>4.0</i>	<i>3.3</i>	<i>2.3</i>	<i>2.0</i>
<i>England</i>	<i>100</i>	<i>19.1</i>	<i>5.7</i>	<i>4.4</i>	<i>3.8</i>	<i>3.2</i>	<i>2.4</i>	<i>2.2</i>

Source: Population estimates, Office for National Statistics

Figure 3 - Indicative population change by Salford wards 2001 - 2007



Source: 2007 ward population estimates & 2001 Census, Office for National Statistics

Table 3 - Country of birth

	All People	England	Scotland	Wales	N.Ireland	Eire	Other EU	Elsewhere
	No.	No.	No.	No.	No.	No.	No.	No.
Walkden North	11,203	10,682	116	61	43	82	67	152
Salford	216,103	198,623	3,002	1,692	1,264	3,034	1,957	6,531
Greater Manchester	2,482,328	2,237,127	32,088	19,903	13,283	31,362	20,277	128,288
North West	6,729,764	6,169,753	109,163	73,850	34,879	56,816	51,001	234,302
England	49,138,831	42,968,596	794,577	609,711	215,124	459,662	695,045	3,396,116
	%	%	%	%	%	%	%	%
Walkden North	100	95.4	1.0	0.5	0.4	0.7	0.6	1.4
<i>Salford</i>	<i>100</i>	<i>91.9</i>	<i>1.4</i>	<i>0.8</i>	<i>0.6</i>	<i>1.4</i>	<i>0.9</i>	<i>3.0</i>
<i>Greater Manchester</i>	<i>100</i>	<i>90.1</i>	<i>1.3</i>	<i>0.8</i>	<i>0.5</i>	<i>1.3</i>	<i>0.8</i>	<i>5.2</i>
<i>North West</i>	<i>100</i>	<i>91.7</i>	<i>1.6</i>	<i>1.1</i>	<i>0.5</i>	<i>0.8</i>	<i>0.8</i>	<i>3.5</i>
<i>England</i>	<i>100</i>	<i>87.5</i>	<i>1.6</i>	<i>1.3</i>	<i>0.4</i>	<i>0.9</i>	<i>1.4</i>	<i>6.9</i>

Source: 2001 Census; Office for National Statistics

Table 4 - Religion

	All People	Christian	Buddhist	Hindu	Jewish	Muslim	Sikh	Other Religion	No religion	Not stated
Walkden North	11,212	8,980	12	28	23	45	3	13	1,147	961
Salford	216,127	165,240	469	695	5,183	2,639	242	315	23,792	17,555
Greater Manchester	2,482,328	1,840,599	5,156	17,260	21,733	125,219	3,720	4,301	281,273	183,067
North West	6,729,764	5,249,686	11,794	27,211	27,974	204,261	6,487	10,625	705,045	486,681
England	49,138,831	35,251,244	139,046	546,982	257,671	1,524,887	327,343	143,811	7,171,332	3,776,515
	%	%	%	%	%	%	%	%	%	%
Walkden North	100	80.1	0.1	0.3	0.2	0.4	0.0	0.1	10.2	8.6
<i>Salford</i>	<i>100</i>	<i>76.5</i>	<i>0.2</i>	<i>0.3</i>	<i>2.4</i>	<i>1.2</i>	<i>0.1</i>	<i>0.1</i>	<i>11.0</i>	<i>8.1</i>
<i>Greater Manchester</i>	<i>100</i>	<i>74.2</i>	<i>0.2</i>	<i>0.7</i>	<i>0.9</i>	<i>5.0</i>	<i>0.1</i>	<i>0.2</i>	<i>11.3</i>	<i>7.4</i>
<i>North West</i>	<i>100</i>	<i>78.0</i>	<i>0.2</i>	<i>0.4</i>	<i>0.4</i>	<i>3.0</i>	<i>0.1</i>	<i>0.2</i>	<i>10.5</i>	<i>7.2</i>
<i>England</i>	<i>100</i>	<i>71.7</i>	<i>0.3</i>	<i>1.1</i>	<i>0.5</i>	<i>3.1</i>	<i>0.7</i>	<i>0.3</i>	<i>14.6</i>	<i>7.7</i>

Source: 2001 Census; Office for National Statistics

Table 5 - Ethnic groups

	White					Mixed					Chinese
	All people	British	Irish	Other	Total White groups	White/ Black Caribbean	White/ Black African	White/ Asian	Other	Total Mixed groups	
	No.	No.	No.	No.	No.	No.	No.	No.	No.	No.	
Walkden North	11,198	10,756	104	81	10,941	40	12	34	24	110	33
Salford	216,058	200,342	3,886	3,533	207,761	865	340	483	485	2,173	1,176
Greater Manchester	2,482,328	2,183,096	42,646	34,765	2,260,507	13,104	4,860	8,547	6,390	32,901	11,858
North West	6,729,764	6,203,043	77,499	74,953	6,355,495	22,119	9,853	17,223	13,344	62,539	26,887
England	49,138,831	42,747,136	624,115	1,308,110	44,679,361	231,424	76,498	184,014	151,437	643,373	220,681
	%	%	%	%	%	%	%	%	%	%	%
Walkden North	100	96.1	0.9	0.7	97.7	0.4	0.1	0.3	0.2	1.0	0.3
Salford	100	92.7	1.8	1.6	96.2	0.4	0.2	0.2	0.2	1.0	0.5
Greater Manchester	100	88.0	1.7	1.4	91.1	0.5	0.2	0.3	0.2	1.2	0.5
North West	100	92.7	1.2	1.1	95.0	0.3	0.2	0.3	0.2	0.9	0.4
England	100	87.0	1.3	2.7	90.9	0.5	0.2	0.4	0.3	1.3	0.5

	Asian					Black				Other ethnic group	
	All people	Indian/ Asian British Indian	Pakistani/ Asian British Pakistani	Bangladeshi/ Asian British Bangladeshi	Other	Total Asian groups	Caribbean/ Black British Caribbean	African/ Black British African	Other		Total Black groups
	No.	No.	No.	No.	No.	No.	No.	No.	No.		No.
Walkden North	11,198	43	19	5	6	73	12	10	3	25	16
Salford	216,058	1,193	953	394	437	2,977	393	673	117	1,183	791
Greater Manchester	2,482,328	35,931	75,187	20,064	8,836	140,018	16,233	10,255	3,259	29,747	7,297
North West	6,729,764	72,219	116,968	26,003	14,685	229,875	20,422	15,912	5,303	41,637	13,331
England	49,138,831	1,028,546	706,539	275,394	237,810	2,248,289	561,246	475,938	95,324	1,132,508	214,619
	%	%	%	%	%	%	%	%	%	%	%
Walkden North	100	0.38	0.17	0.04	0.05	0.64	0.11	0.09	0.03	0.23	0.14
Salford	100	0.6	0.4	0.2	0.2	1.4	0.2	0.3	0.1	0.5	0.4
Greater Manchester	100	1.5	3.0	0.8	0.4	5.7	0.7	0.4	0.1	1.2	0.3
North West	100	1.1	1.7	0.4	0.2	3.4	0.3	0.2	0.1	0.6	0.2
England	100	2.1	1.4	0.6	0.5	4.6	1.1	1.0	0.2	2.3	0.4

Source: 2001 Census; Office for National Statistics

Table 6 - Household Composition

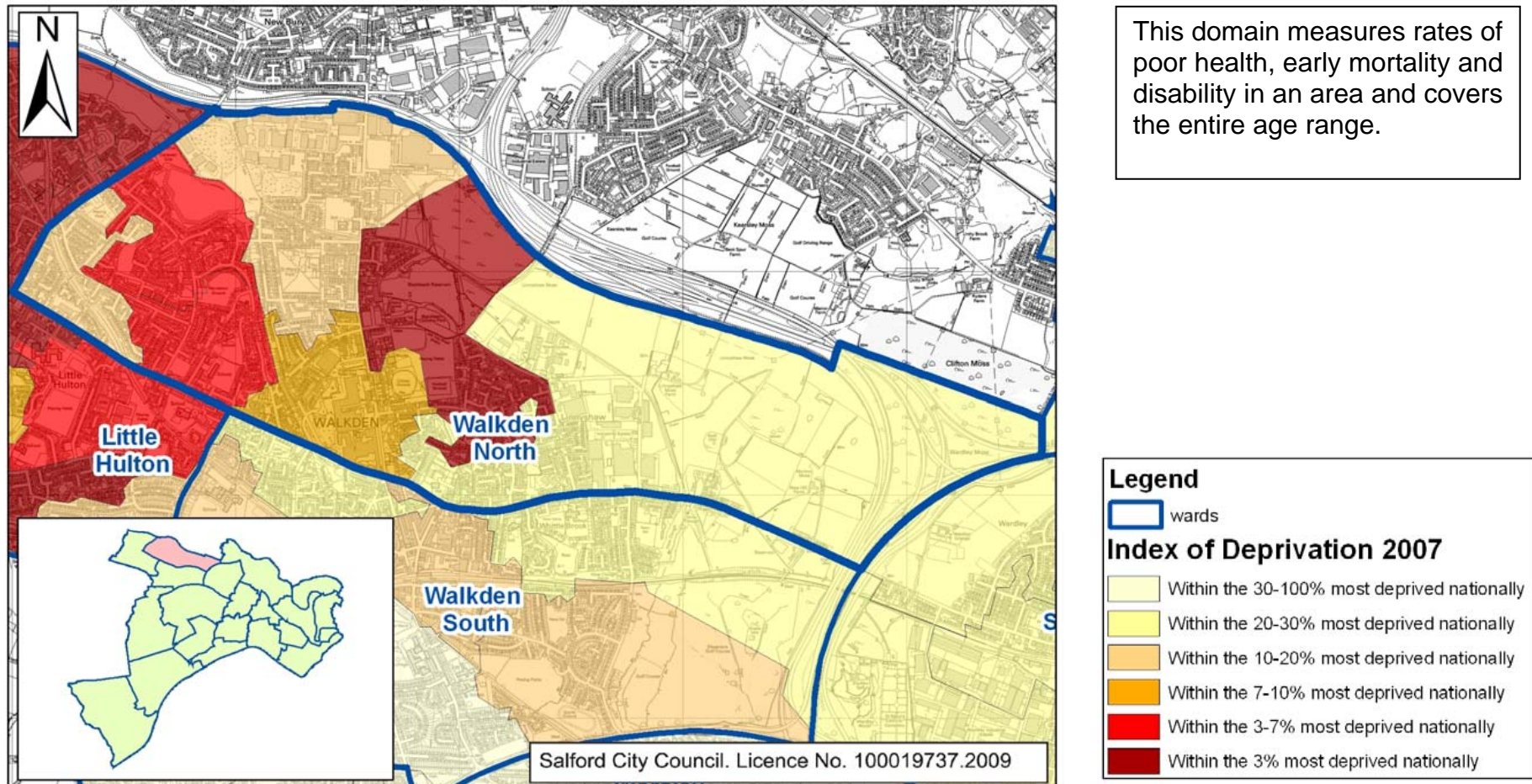
	All households	One person		One family and no others						
		Pensioner	Other	All pensioners	Married couple:			Cohabiting couple:		
					No children	With dependent children	All children non-dependent	Households: no children	With dependent children	All children non-dependent
Walkden North	5,057	946	931	368	456	623	280	202	236	19
Salford	94,157	15,819	18,771	6,929	9,231	12,841	5,468	4,132	3,504	345
Greater Manchester	1,040,231	154,490	178,660	78,120	118,320	172,922	64,808	46,326	39,366	3,781
North West	2,812,789	423,623	446,611	238,711	345,657	480,977	182,482	115,123	96,870	9,519
England	20,451,427	2,939,465	3,210,799	1,826,453	2,656,440	3,591,335	1,218,191	976,879	661,073	66,352
	%	%	%	%	%	%	%	%	%	%
Walkden North	100	18.7	18.4	7.3	9.0	12.3	5.5	4.0	4.7	0.4
Salford	100	16.8	19.9	7.4	9.8	13.6	5.8	4.4	3.7	0.4
Greater Manchester	100	14.9	17.2	7.5	11.4	16.6	6.2	4.5	3.8	0.4
North West	100	15.1	15.9	8.5	12.3	17.1	6.5	4.1	3.4	0.3
England	100	14.4	15.7	8.9	13.0	17.6	6.0	4.8	3.2	0.3

	One family and no others		Other households:			
	Lone parents:		with dependant children	all student	all pensioner	Other
	with dependent children	all children non-dependent				
Walkden North	549	210	109	3	21	104
Salford	8,167	3,603	1,894	239	380	2,833
Greater Manchester	83,723	36,197	24,833	3,978	3,709	30,998
North West	215,610	97,737	62,728	9,137	11,378	76,626
England	1,311,974	622,904	458,369	79,143	82,384	749,666
	%	%	%	%	%	%
Walkden North	10.9	4.2	2.2	0.1	0.4	2.1
Salford	8.7	3.8	2.0	0.3	0.4	3.0
Greater Manchester	8.0	3.5	2.4	0.4	0.4	3.0
North West	7.7	3.5	2.2	0.3	0.4	2.7
England	6.4	3.0	2.2	0.4	0.4	3.7

Source: 2001 Census; Office for National Statistics

Improving health in Salford

Figure 4 - Health deprivation and Disability domain, Index of Deprivation 2007



Source: Index of Deprivation 2007, Communities and local government

Table 7 - Health and limiting long term illness

Residents' Perception Of Their State Of Health					Having limiting long term illness		
	All People	Good Health	Fairly Good Health	Not Good Health	All people	People with limiting long term illness	Working age with limiting long term illness
	No.	No.	No.	No.	No.	No.	No.
Walkden North	11,219	6,890	2,743	1,586	11,219	2,785	1,351
Salford	216,100	139,751	49,297	27,055	216,100	49,311	24,094
Greater Manchester	2,482,328	1,649,395	557,210	275,723	2,482,328	506,865	250,351
North West	6,729,764	4,501,183	1,491,467	737,114	6,729,764	1,394,609	670,148
England	49,138,831	33,787,361	10,915,594	4,435,876	49,138,831	8,809,194	4,014,005
	%	%	%	%	%	%	%
Walkden North	100	61.4	24.5	14.1	100	24.8	12.0
<i>Salford</i>	<i>100</i>	<i>64.7</i>	<i>22.8</i>	<i>12.5</i>	<i>100</i>	<i>22.8</i>	<i>11.1</i>
<i>Greater Manchester</i>	<i>100</i>	<i>66.5</i>	<i>22.4</i>	<i>11.1</i>	<i>100</i>	<i>20.4</i>	<i>10.1</i>
<i>North West</i>	<i>100</i>	<i>66.9</i>	<i>22.2</i>	<i>10.9</i>	<i>100</i>	<i>20.7</i>	<i>10.0</i>
<i>England</i>	<i>100</i>	<i>68.8</i>	<i>22.2</i>	<i>9.0</i>	<i>100</i>	<i>17.9</i>	<i>8.2</i>

Source: 2001 Census; Office for National Statistics

Table 8 - Providing unpaid care

	All people who provide unpaid care	Unpaid care 1-19 hours/week	Unpaid care 20-49 hours/week	Unpaid care 50+ hours/week
	No.	No.	No.	No.
Walkden North	1,212	710	185	317
Salford	22,443	13,761	2,965	5,717
Greater Manchester	257,739	168,601	31,061	58,077
North West	724,802	473,083	87,407	164,312
England	4,877,060	3,347,531	530,797	998,732
	%	%	%	%
Walkden North	100	58.6	15.3	26.2
<i>Salford</i>	<i>100</i>	<i>61.3</i>	<i>13.2</i>	<i>25.5</i>
<i>Greater Manchester</i>	<i>100</i>	<i>65.4</i>	<i>12.1</i>	<i>22.5</i>
<i>North West</i>	<i>100</i>	<i>65.3</i>	<i>12.0</i>	<i>22.7</i>
<i>England</i>	<i>100</i>	<i>68.6</i>	<i>10.9</i>	<i>20.5</i>

Source: 2001 Census; Office for National Statistics

Table 9 - Percentage of live births with a low birth weight (less than 2500 grams) 2006 – 2008

	All live births	Births under 2500 g weight	Low birthweight
	No.	No.	%
Walkden North	523	31	5.9
Salford	9836	679	6.9

Source - Public Health Birth File, Salford Primary Care Trust

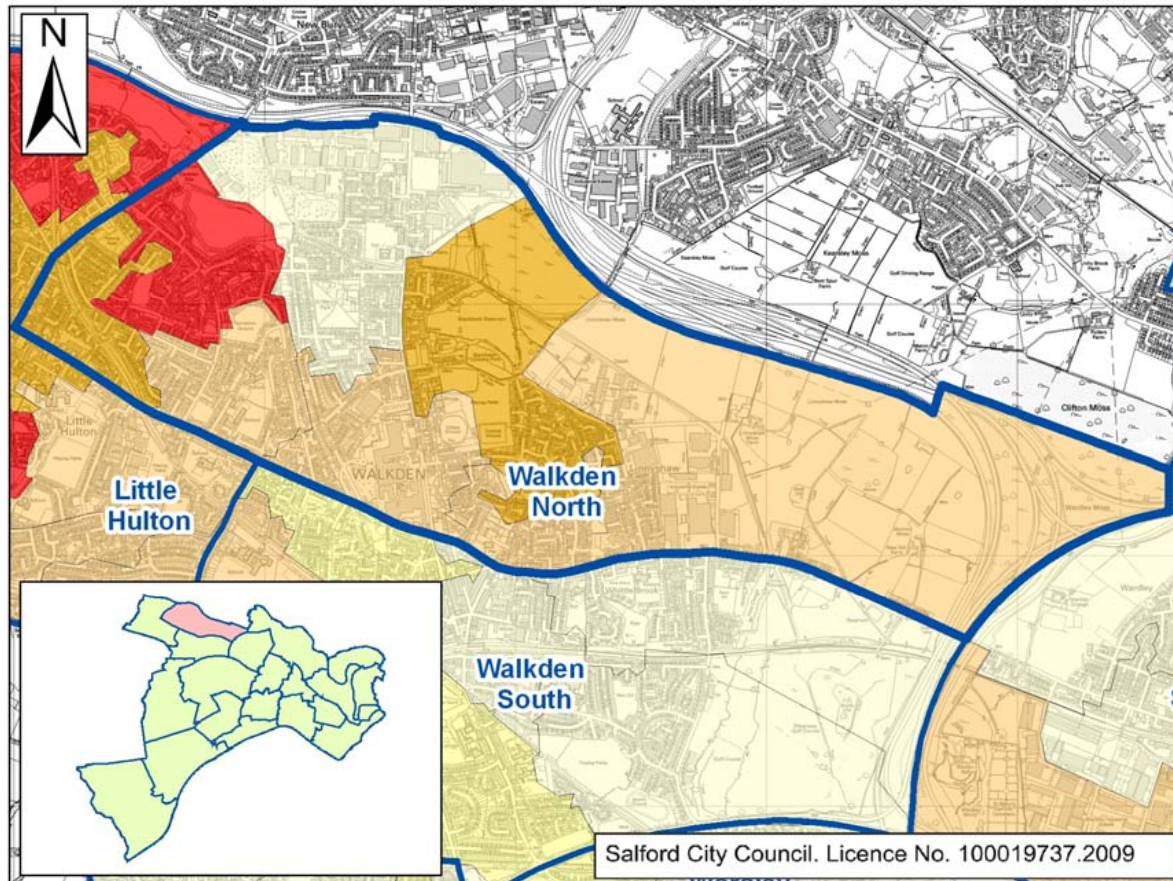
Table 10 - Mortality Rates (all ages) by all causes 2005 - 2007

	Standardised Mortality Ratio
Walkden North	107
Salford	123
North West	118
England	100

Source – Salford Primary Care Trust

Reducing crime in Salford

Figure 5 - Crime Domain, Index of Deprivation 2007



This domain measures the rate of recorded crime for four major crime types (Burglary, Theft, Criminal damage and Violence), representing the risk of personal and material victimisation at a small area level.

Legend

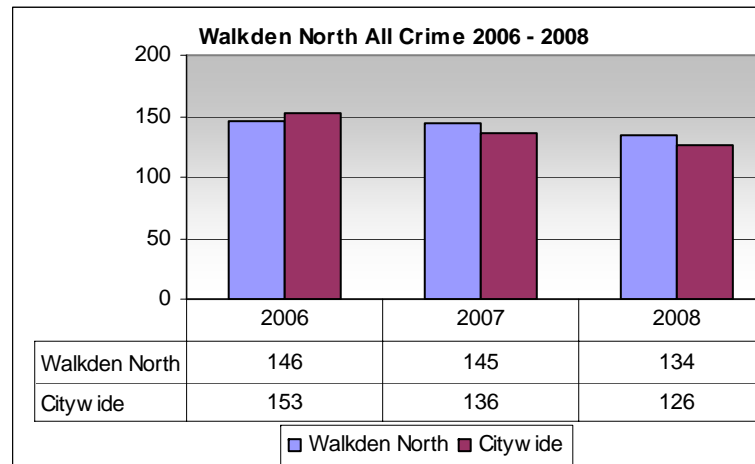
wards

Index of Deprivation 2007

- Within the 30-100% most deprived nationally
- Within the 20-30% most deprived nationally
- Within the 10-20% most deprived nationally
- Within the 7-10% most deprived nationally
- Within the 3-7% most deprived nationally
- Within the 3% most deprived nationally

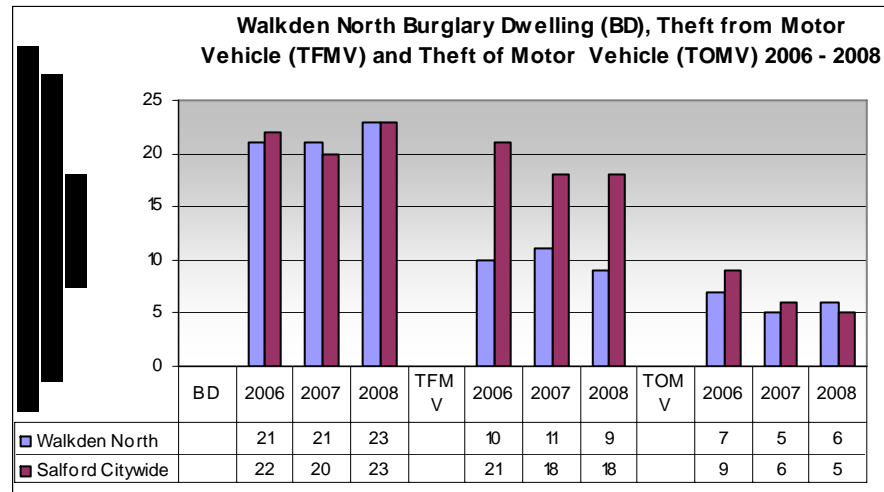
Source: Index of Deprivation 2007, Communities and local government

Figure 6 - Total recorded crime rates 2006 - 2008



Source: Community Safety Unit, Salford City Council

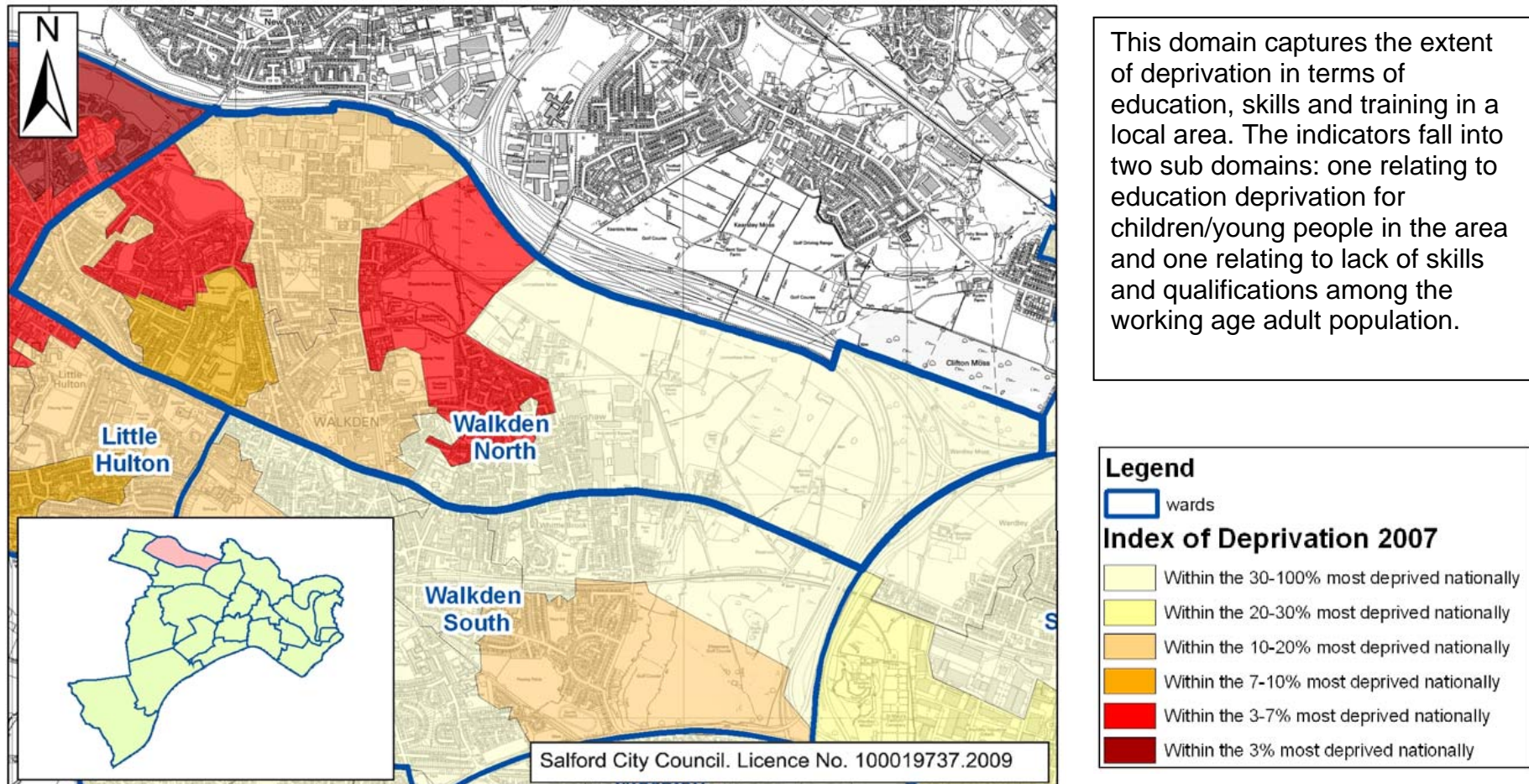
Figure 7 - Burglary and Vehicle crime rates 2006 - 2008



Source: Community Safety Unit Salford City Council

Encouraging learning, leisure and creativity in Salford

Figure 8 - Education, Skills and Training domain, Index of Deprivation 2007



Source: Index of Deprivation 2007, Communities and local government

Table 11 - Qualifications

	All people aged 16-74	No qualifications	Highest qualification attained: level 1	Highest qualification attained: level 2	Highest qualification attained: level 3	Highest qualification attained: level 4/5	Other / level unknown
Walkden North	7,740	3,041	1,440	1,480	474	678	627
Salford	155,375	55,196	25,419	28,853	12,775	22,365	10,763
Greater Manchester	1,781,882	582,902	295,645	335,621	140,606	303,553	123,555
North West	4,839,669	1,543,524	808,718	940,292	374,985	830,945	341,205
England	35,532,091	10,251,674	5,909,093	6,877,530	2,962,282	7,072,052	2,459,460
	%	%	%	%	%	%	%
Walkden North	100	39.3	18.6	19.1	6.1	8.8	8.1
<i>Salford</i>	<i>100</i>	<i>35.5</i>	<i>16.4</i>	<i>18.6</i>	<i>8.2</i>	<i>14.4</i>	<i>6.9</i>
<i>Greater Manchester</i>	<i>100</i>	<i>32.7</i>	<i>16.6</i>	<i>18.8</i>	<i>7.9</i>	<i>17.0</i>	<i>6.9</i>
<i>North West</i>	<i>100</i>	<i>31.9</i>	<i>16.7</i>	<i>19.4</i>	<i>7.7</i>	<i>17.2</i>	<i>7.1</i>
<i>England</i>	<i>100</i>	<i>28.9</i>	<i>16.6</i>	<i>19.4</i>	<i>8.3</i>	<i>19.9</i>	<i>6.9</i>

Source: 2001 Census; Office for National Statistics

Definitions:

Level 1 qualifications include: 1+ O-level, CSE, GCSE; NVQ level 1; foundation level GNVQ

Level 2 qualifications include: 5+ O-levels; 5+ GCE (grade 1s); 5+GCSE (grades a*-c); school certificate

1+A/AS-levels; NVQ level 2; and intermediate GNVQ

Level 3 qualifications include: 2+ A-levels; 4+AS-levels; Higher School Certificate; NVQ level 3; advanced GNVQ

Level 4/5 qualifications include: first degree; higher degree; NVQ levels 4/5; HNC; HND; qualified teacher status; qualified medical doctor; qualified dentist; qualified nurse; midwife; and health visitor

Other qualifications include: City & Guilds; RSA/OCR; BTec/Edexcel; other professional qualifications

Table 12 - Key Stage 2 Pupil attainment by place of residence 2008

		Level 4+	Level 5+	Average points
English	Walkden North	73%	22%	26
	Salford	78%	26%	27
	England	81%	29%	
Maths	Walkden North	77%	30%	27
	Salford	77%	28%	27
	England	78%	31%	
Science	Walkden North	89%	44%	29
	Salford	85%	39%	28
	England	88%	44%	
Overall Average Points	Walkden North			27.4
	Salford			27.5
	England			27.8

Key Stage 2 tests are usually taken in year 6 when children are 11 years old. The subjects covered are English, mathematics and science. Level 4 represents the level of achievement expected of most 11 year olds. Level 5 means pupils are achieving beyond the expected level.

The levels of attainment are based on the points scored by each child in the subjects listed above. Averaging the points scored by every child in all subjects at the school allows the average points score to be calculated. This score gives a more inclusive measure of attainment as it looks at every child rather than just those achieving a certain level

Source: Children's Services, Salford City Council (Ward level) and Department for Education and Skills (Salford and England)

Table 13 - Percent of pupils gaining 5 or more GCSE's at level A*-C 2007 - 2008

	GCSE Attainment	
	2007	2008
Walkden North	47%	52%
Salford	60%	66%
England	62%	65%

Source: Children's Services, Salford City Council (Ward level) and Department for Education and Skills (Salford and England)

Promoting inclusion in Salford

Table 14 - Socio-economic class

	All people 16-74	Employers/ managerial occup	Higher professional occup	Lower managerial/p rofessional occup	Intermediate	small employers / own account workers	Lower supervisory / technical	Semi- routine	Routine	Never Worked	Long Term Unemployed	Full Time students	Not classifiable for other reasons
	No	No	No	No	No	No	No	No	No	No	No	No	No
Walkden North	7,739	129	136	1,008	844	356	629	1,231	1,039	249	125	342	1,651
Salford	155,385	3,646	5,481	24,373	16,168	7,529	11,166	19,612	16,203	5,530	1,722	12,126	31,829
Greater Manchester	1,781,882	49,100	76,274	300,114	174,833	105,166	129,522	217,689	183,387	61,359	18,824	133,799	331,815
North West	4,839,669	138,548	201,586	812,260	448,644	305,039	362,027	589,164	475,462	151,266	55,583	337,135	962,955
England	35,532,091	1,243,919	1,816,039	6,656,918	3,366,759	2,479,472	2,526,120	4,139,697	3,203,764	964,978	359,728	2,498,729	6,275,968
	%	%	%	%	%	%	%	%	%	%	%	%	%
Walkden North	100	1.7	1.8	13.0	10.9	4.6	8.1	15.9	13.4	3.2	1.6	4.4	21.3
Salford	100	2.3	3.5	15.7	10.4	4.8	7.2	12.6	10.4	3.6	1.1	7.8	20.5
Greater Manchester	100	2.8	4.3	16.8	9.8	5.9	7.3	12.2	10.3	3.4	1.1	7.5	18.6
North West	100	2.9	4.2	16.8	9.3	6.3	7.5	12.2	9.8	3.1	1.1	7.0	19.9
England	100	3.5	5.1	18.7	9.5	7.0	7.1	11.7	9.0	2.7	1.0	7.0	17.7

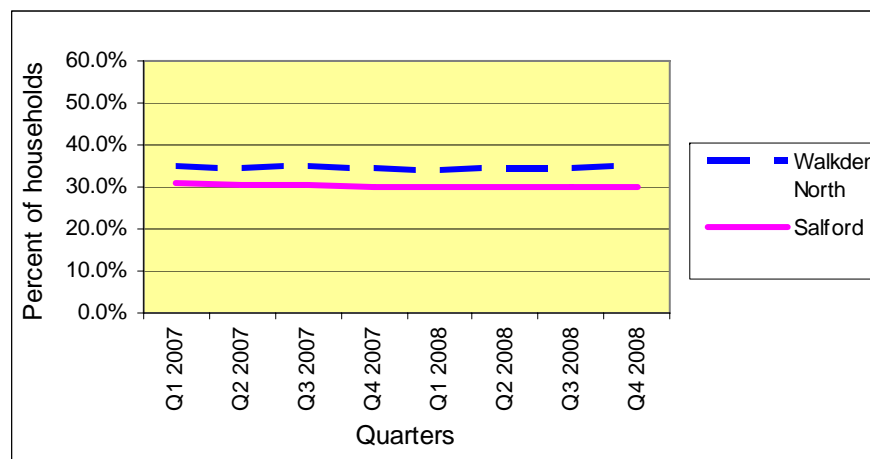
Source: 2001 Census; Office for National Statistics

Table 15 - Households in receipt of council tax and/or housing benefit

	Quarter 1 2007		Quarter 2 2007		Quarter 3 2007		Quarter 4 2007	
	No.	%	No.	%	No.	%	No.	%
Walkden North	1775	34.7%	1760	34.4%	1780	34.6%	1769	34.3%
Salford	29902	30.8%	29608	30.4%	29840	30.6%	29523	30.2%
	Quarter 1 2008		Quarter 2 2008		Quarter 3 2008		Quarter 4 2008	
	No.	%	No.	%	No.	%	No.	%
Walkden North	1750	34.0%	1781	34.5%	1767	34.2%	1804	34.9%
Salford	29654	30.1%	29680	30.0%	29833	30.0%	30172	30.2%

Source: Council Tax, Salford City Council

Figure 9 - Percentage of Households in receipt of council tax and/or housing benefit between 2007 and 2008



Source: Council Tax, Salford City Council

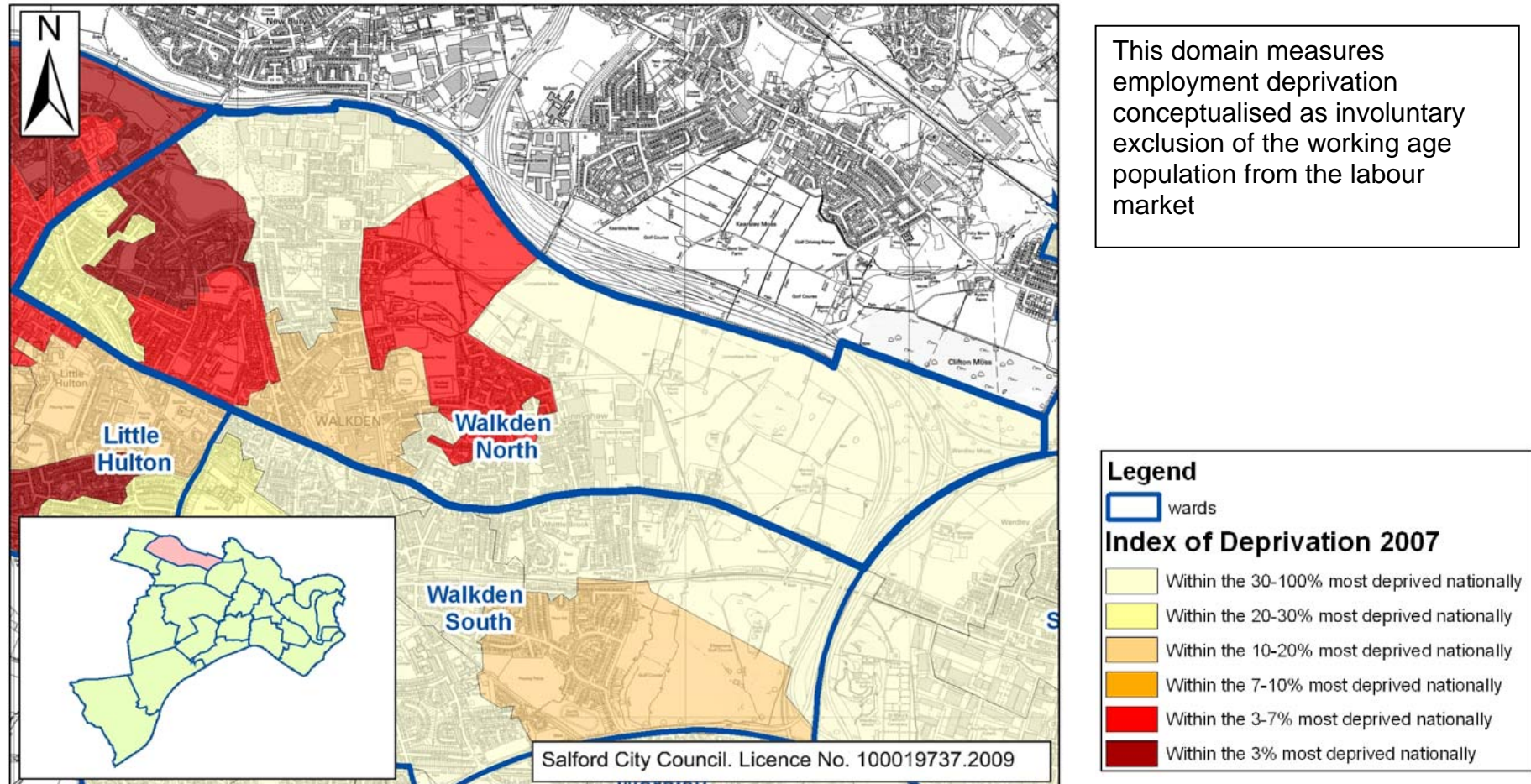
Table 16 - Lone parents and employment

	All lone parents households with dependent children	Male lone parents			Female lone parents		
		Total Male lone parents	Male lone parents in FT employment	Male lone parents in PT employment	Total Female lone parents	Female lone parents in FT employment	Female lone parents in PT employment
	No.	No.	No.	No.	No.	No.	No.
Walkden North	549	32	12	0	513	90	147
Salford	8,143	685	390	42	7,416	1,448	1,841
Greater Manchester	83,723	7,492	3,816	499	76,231	16,296	19,653
North West	215,610	18,810	9,815	1,240	196,800	40,019	51,938
England	1,311,974	125,099	70,377	8,746	1,186,875	256,520	313,426
		%	%	%	%	%	%
Walkden North		100	37.5	0.0	100	17.5	28.7
Salford		100	56.9	6.1	100	19.5	24.8
Greater Manchester		100	50.9	6.7	100	21.4	25.8
North West		100	52.2	6.6	100	20.3	26.4
England		100	56.3	7.0	100	21.6	26.4

Source: 2001 Census; Office for National Statistics

Creating prosperity in Salford

Figure 10 - Employment Domain, Index of Deprivation 2007



Source: Index of Deprivation 2007, Communities and local government

Table 17 - Economic Activity

	All people 16-74	Part time employees	Full time employees	Self employed	Unemployed	Economically active: full time student	All economically active
	No.	No.	No.	No.	No.	No.	No.
Walkden North	7,736	901	3,146	346	376	150	4,919
Salford	155,379	16,431	61,107	8,390	5,921	4,662	96,511
Greater Manchester	1,781,882	201,208	717,618	118,533	62,747	46,935	1,147,041
North West	4,839,669	574,505	1,876,205	343,847	175,549	123,080	3,093,186
England	35,532,091	4,196,041	14,499,241	2,954,988	1,188,855	917,582	23,756,707
	%	%	%	%	%	%	%
Walkden North	100	11.7	40.7	4.5	4.9	1.9	63.6
<i>Salford</i>	<i>100</i>	<i>10.6</i>	<i>39.3</i>	<i>5.4</i>	<i>3.8</i>	<i>3.0</i>	<i>62.1</i>
<i>Greater Manchester</i>	<i>100</i>	<i>11.3</i>	<i>40.3</i>	<i>6.7</i>	<i>3.5</i>	<i>2.6</i>	<i>64.4</i>
<i>North West</i>	<i>100</i>	<i>11.9</i>	<i>38.8</i>	<i>7.1</i>	<i>3.6</i>	<i>2.5</i>	<i>63.9</i>
<i>England</i>	<i>100</i>	<i>11.8</i>	<i>40.8</i>	<i>8.3</i>	<i>3.3</i>	<i>2.6</i>	<i>66.9</i>
	All people 16-74	Economically inactive: retired	Economically inactive: full time student	Looking after home/ family	Sick/ disabled	Econ inactive: other	All economically inactive
	No.	No.	No.	No.	No.	No.	No.
Walkden North	7,736	1,004	208	503	812	290	2,817
Salford	155,379	21,029	7,855	9,157	14,802	6,028	58,871
Greater Manchester	1,781,882	232,635	90,976	108,589	139,705	62,936	634,841
North West	4,839,669	691,072	223,770	296,065	374,928	160,648	1,746,483
England	35,532,091	4,811,595	1,660,564	2,316,229	1,884,901	1,102,095	11,775,384
	%	%	%	%	%	%	%
Walkden North	100	13.0	2.7	6.5	10.5	3.8	36.4
<i>Salford</i>	<i>100</i>	<i>13.5</i>	<i>5.1</i>	<i>5.9</i>	<i>9.5</i>	<i>3.9</i>	<i>37.9</i>
<i>Greater Manchester</i>	<i>100</i>	<i>13.1</i>	<i>5.1</i>	<i>6.1</i>	<i>7.8</i>	<i>3.5</i>	<i>35.6</i>
<i>North West</i>	<i>100</i>	<i>14.3</i>	<i>4.6</i>	<i>6.1</i>	<i>7.7</i>	<i>3.3</i>	<i>36.1</i>
<i>England</i>	<i>100</i>	<i>13.5</i>	<i>4.7</i>	<i>6.5</i>	<i>5.3</i>	<i>3.1</i>	<i>33.1</i>

Source: 2001 Census; Office for National Statistics

Table 18 - Unemployment benefit claimants

	June 2009		June 2010		Change
	No.	%	No.	%	%
Walkden North	507	10.4	531	10.9	4.7
Salford	7,291	7.7	7,286	7.7	0.0
Greater Manchester	78,003	7.0	74,446	6.6	-4.6
North West	194,338	6.4	177,275	5.9	-8.8
UK	1,553,256	5.7	1,444,096	5.3	-7.0

Source: NOMIS

Table 19 - Employment by industrial sector

	All people in employment 16-74	Agriculture; hunting; forestry	Fishing	Mining & quarrying	Manufacturing	Electricity; gas & water supply	Construction	Wholesale & retail trade; vehicle repair	Hotels & catering
	No.	No.	No.	No.	No.	No.	No.	No.	No.
Walkden North	4,503	15	0	3	745	44	393	1,001	180
Salford	89,877	380	3	87	12,923	668	6,163	16,689	4,574
Greater Manchester	1,077,347	5,366	38	950	178,837	8,174	72,560	199,233	50,330
North West	2,900,020	35,520	361	4,649	489,833	22,451	188,285	516,809	148,857
England	22,441,498	326,117	5,396	55,481	3,328,437	159,619	1,515,996	3,782,043	1,061,617
	%	%	%	%	%	%	%	%	%
Walkden North	100	0.3	0.0	0.1	16.5	1.0	8.7	22.2	4.0
Salford	100	0.4	0.0	0.1	14.4	0.7	6.9	18.6	5.1
Greater Manchester	100	0.5	0.0	0.1	16.6	0.8	6.7	18.5	4.7
North West	100	1.2	0.0	0.2	16.9	0.8	6.5	17.8	5.1
England	100	1.5	0.0	0.2	14.8	0.7	6.8	16.9	4.7

	All people in employment 16-74	Transport, storage & communication	Financial intermediation	Real estate; renting & business activities	Public administration & defence	Education	Health & social work	Other
	No.	No.	No.	No.	No.	No.	No.	No.
Walkden North	4,503	368	156	461	174	246	499	218
Salford	89,877	6,894	3,932	11,402	4,206	6,838	10,692	4,427
Greater Manchester	1,077,347	78,747	44,191	127,043	52,194	85,810	125,350	48,524
North West	2,900,020	196,827	109,212	313,188	164,592	230,506	347,245	131,685
England	22,441,498	1,590,031	1,078,082	2,964,468	1,270,755	1,736,497	2,400,698	1,166,261
	%	%	%	%	%	%	%	%
Walkden North	100	8.2	3.5	10.2	3.9	5.5	11.1	4.8
Salford	100	7.7	4.4	12.7	4.7	7.6	11.9	4.9
Greater Manchester	100	7.3	4.1	11.8	4.8	8.0	11.6	4.5
North West	100	6.8	3.8	10.8	5.7	7.9	12.0	4.5
England	100	7.1	4.8	13.2	5.7	7.7	10.7	5.2

Source: 2001 Census; Office for National Statistics

Table 20 – Occupation Groups

	All people 16 - 74 in employment	Managers and senior officials	Professional occupations	Associate professional & technical occupations	Administrative & secretarial occupations	Skilled trade occupations	Personal service occupations	Sales & customer service occupations	Process: plant and machine operatives	Elementary occupations
	No.	No.	No.	No.	No.	No.	No.	No.	No.	No.
Walkden North	4,517	438	205	459	671	580	402	461	569	732
Salford	89,931	10,959	8,199	11,172	13,554	9,504	7,242	7,755	8,885	12,654
Greater Manchester	1,077,347	143,178	112,219	138,875	146,744	120,461	79,982	89,779	108,451	137,658
North West	2,900,020	397,264	304,030	369,984	379,135	338,979	221,142	241,371	285,056	363,059
England	22,441,498	3,424,899	2,515,679	3,104,993	3,004,721	2,591,875	1,545,367	1,717,796	1,889,126	2,647,042
	%	%	%	%	%	%	%	%	%	%
Walkden North	100	9.7	4.5	10.2	14.9	12.8	8.9	10.2	12.6	16.2
<i>Salford</i>	<i>100</i>	<i>12.2</i>	<i>9.1</i>	<i>12.4</i>	<i>15.1</i>	<i>10.6</i>	<i>8.1</i>	<i>8.6</i>	<i>9.9</i>	<i>14.1</i>
<i>Greater Manchester</i>	<i>100</i>	<i>13.3</i>	<i>10.4</i>	<i>12.9</i>	<i>13.6</i>	<i>11.2</i>	<i>7.4</i>	<i>8.3</i>	<i>10.1</i>	<i>12.8</i>
<i>North West</i>	<i>100</i>	<i>13.7</i>	<i>10.5</i>	<i>12.8</i>	<i>13.1</i>	<i>11.7</i>	<i>7.6</i>	<i>8.3</i>	<i>9.8</i>	<i>12.5</i>
<i>England</i>	<i>100</i>	<i>15.3</i>	<i>11.2</i>	<i>13.8</i>	<i>13.4</i>	<i>11.5</i>	<i>6.9</i>	<i>7.7</i>	<i>8.4</i>	<i>11.8</i>

Source: 2001 Census; Office for National Statistics

Table 21 - Hours worked

	All males aged 16 - 74 in employment	1-5 hours per week	6-15 hours per week	16-30 hours per week	31-37 hours per week	38-48 hours per week	49 hours per week or more
	No.	No.	No.	No.	No.	No.	No.
Walkden North	2,374	6	41	110	455	1,336	426
Salford	48,530	212	1,363	3,173	8,723	26,124	8,932
Greater Manchester	577,240	2,660	15,234	38,604	102,065	306,865	111,812
North West	1,545,789	7,899	42,431	101,564	273,297	800,243	320,355
England	12,155,166	62,475	359,106	750,241	1,790,321	6,250,252	2,942,771
	%	%	%	%	%	%	%
Walkden North	100	0.3	1.7	4.6	19.2	56.3	17.9
<i>Salford</i>	100	0.4	2.8	6.5	18.0	53.8	18.4
<i>Greater Manchester</i>	100	0.5	2.6	6.7	17.7	53.2	19.4
<i>North West</i>	100	0.5	2.7	6.6	17.7	51.8	20.7
<i>England</i>	100	0.5	3.0	6.2	14.7	51.4	24.2
	All females in employment aged 16-74	1-5 hours per week	6-15 hours per week	16-30 hours per week	31-37 hours per week	38-48 hours per week	49 hours per week or more
	No.	No.	No.	No.	No.	No.	No.
Walkden North	2,149	31	187	672	595	575	89
Salford	41,448	612	3,976	11,980	11,114	11,674	2,091
Greater Manchester	500,107	7,440	49,520	145,364	132,010	138,489	27,284
North West	1,354,231	23,521	150,469	409,763	333,999	357,895	78,584
England	10,286,332	192,479	1,252,151	2,914,758	2,285,236	2,930,722	710,986
	%	%	%	%	%	%	%
Walkden North	100	1.4	8.7	31.3	27.7	26.8	4.1
<i>Salford</i>	100	1.5	9.6	28.9	26.8	28.2	5.0
<i>Greater Manchester</i>	100	1.5	9.9	29.1	26.4	27.7	5.5
<i>North West</i>	100	1.7	11.1	30.3	24.7	26.4	5.8
<i>England</i>	100	1.9	12.2	28.3	22.2	28.5	6.9

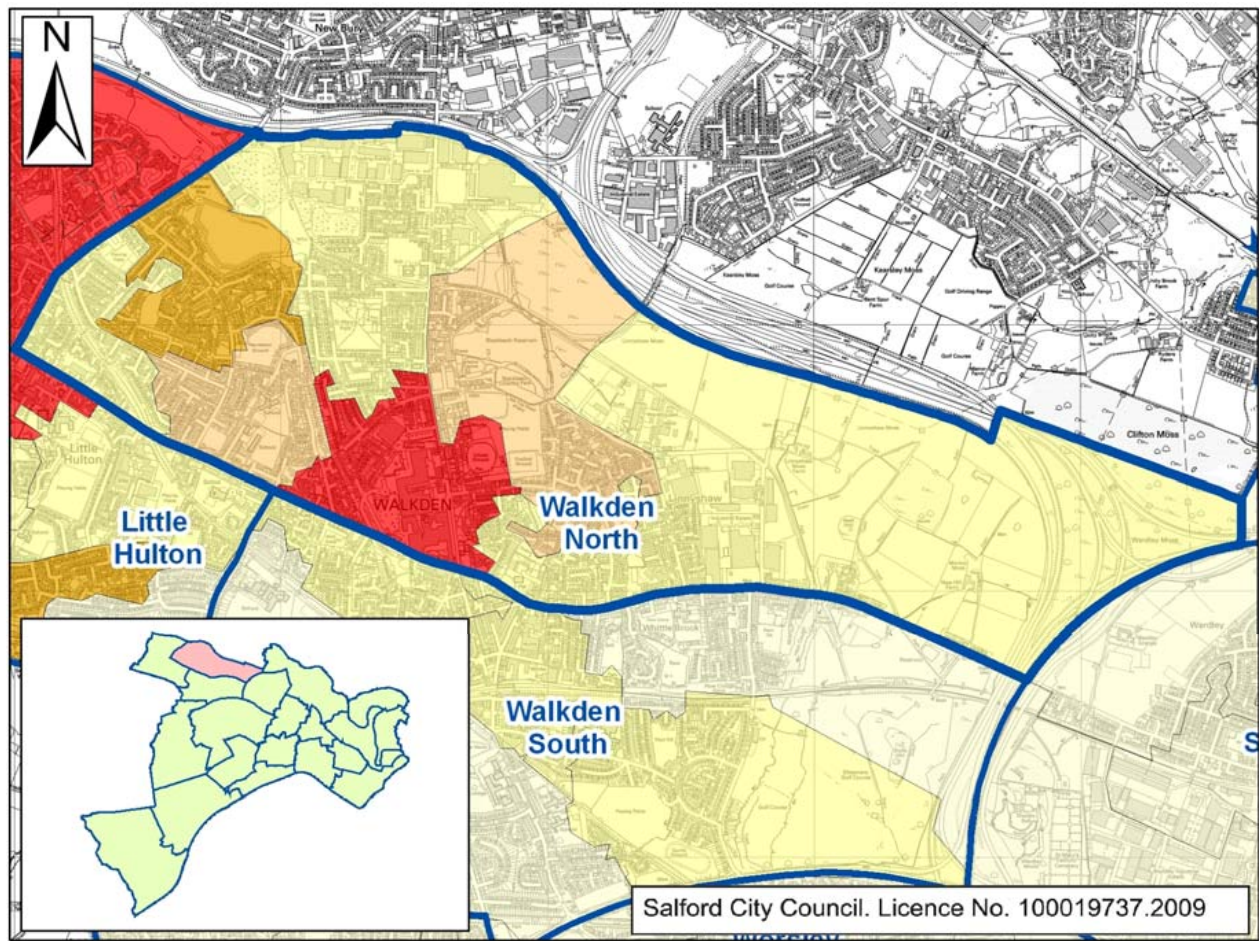
Source: 2001 Census; Office for National Statistics

Table 22 - Cars or vans (Owned or available for use within the household)

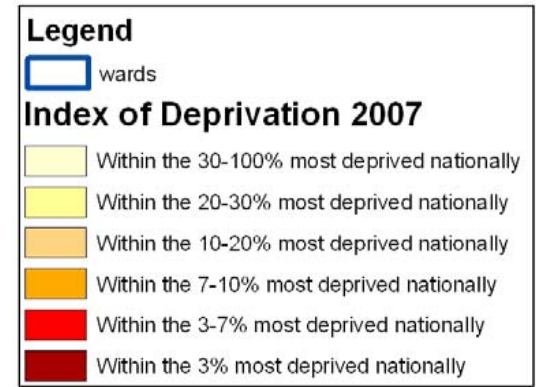
	All households	No cars	One car	Two cars	Three cars	Four cars or more	All cars or vans in the area
	No.	No.	No.	No.	No.	No.	No.
Walkden North	5,058	2,140	2,175	635	93	15	3,802
Salford	94,208	36,918	39,514	14,887	2,288	601	78,913
Greater Manchester	1,040,231	341,276	447,551	209,014	33,622	8,768	1,004,862
North West	2,812,789	849,769	1,224,554	605,586	104,120	28,760	2,874,991
England	20,451,427	5,488,386	8,935,718	4,818,581	924,289	284,453	22,607,629
	%	%	%	%	%	%	<i>Average cars per household</i>
Walkden North	100	42.3	43.0	12.6	1.8	0.3	0.8
<i>Salford</i>	<i>100</i>	<i>39.2</i>	<i>41.9</i>	<i>15.8</i>	<i>2.4</i>	<i>0.6</i>	<i>0.8</i>
<i>Greater Manchester</i>	<i>100</i>	<i>32.8</i>	<i>43.0</i>	<i>20.1</i>	<i>3.2</i>	<i>0.8</i>	<i>1.0</i>
<i>North West</i>	<i>100</i>	<i>30.2</i>	<i>43.5</i>	<i>21.5</i>	<i>3.7</i>	<i>1.0</i>	<i>1.0</i>
<i>England</i>	<i>100</i>	<i>26.8</i>	<i>43.7</i>	<i>23.6</i>	<i>4.5</i>	<i>1.4</i>	<i>1.1</i>

Source: 2001 Census; Office for National Statistics

Figure 11 - Income Domain, Index of Deprivation 2007

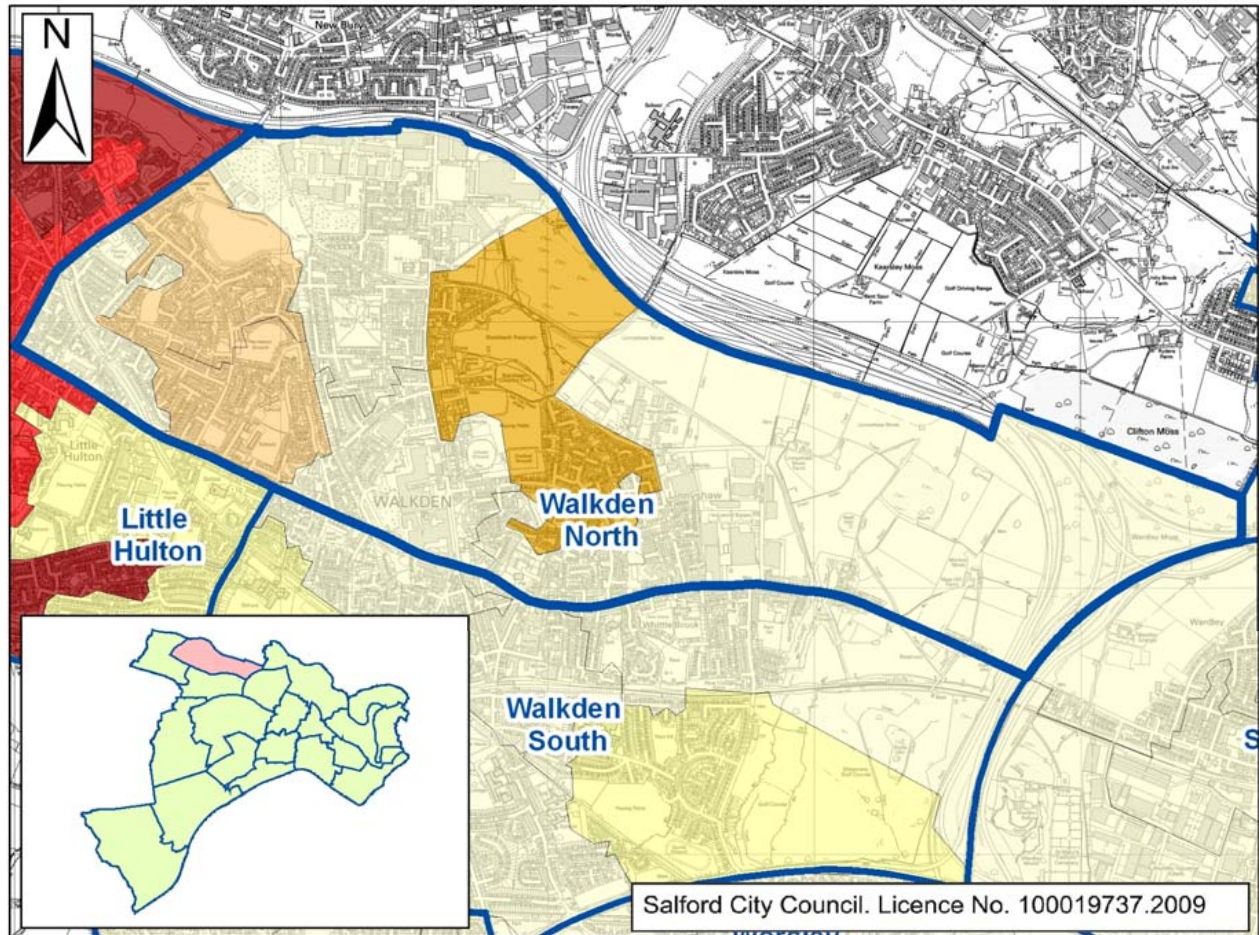


The purpose of this Domain is to capture the proportion of the population experiencing income deprivation in an area.



Source: Index of Deprivation 2007, Communities and local government

Figure 12 - Income deprivation affecting children Index, Index of Deprivation 2007



This subset of the income deprivation domain that shows the percentage of children in each Lower Super Output Area that live in families that are income deprived.

Legend

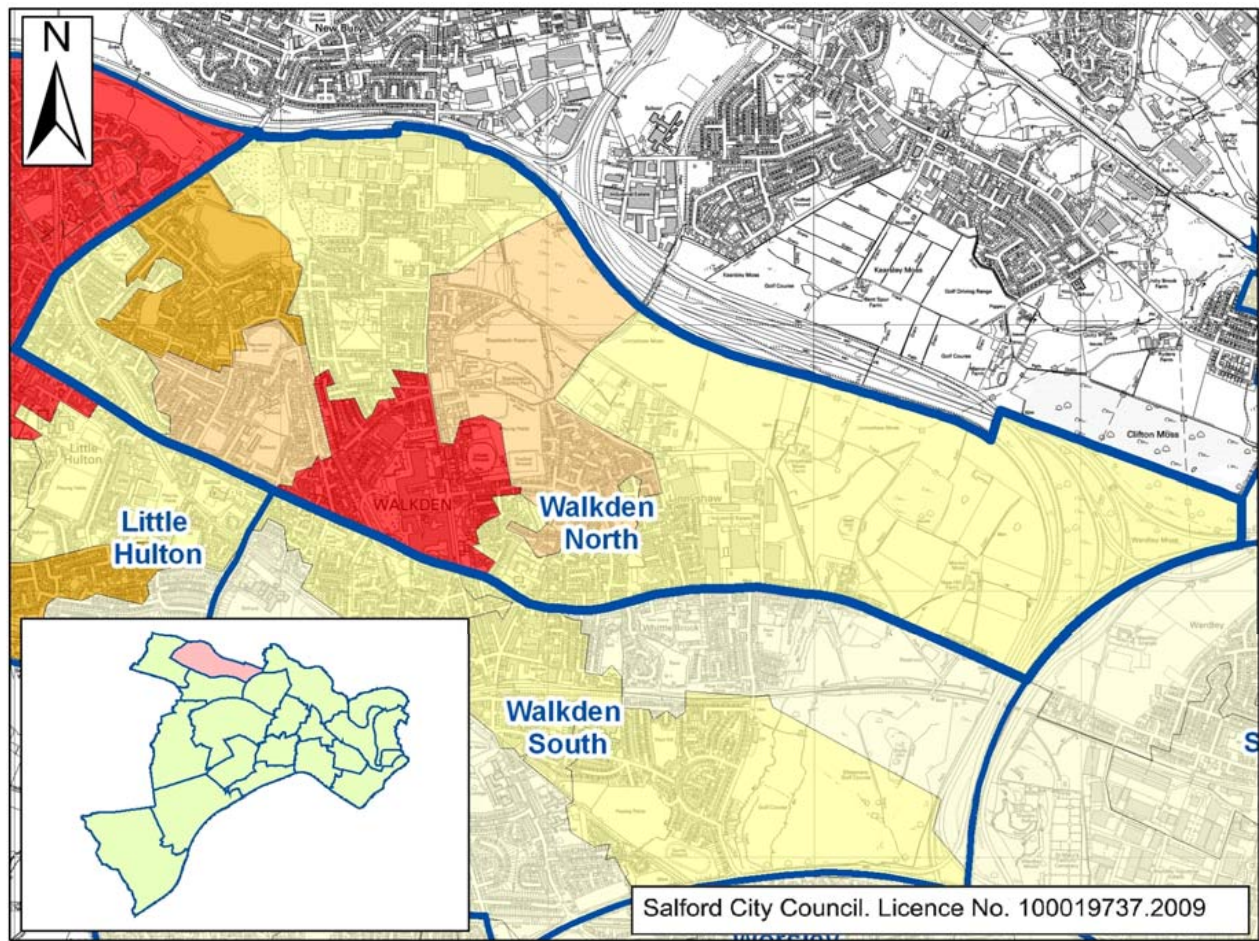
wards

Index of Deprivation 2007

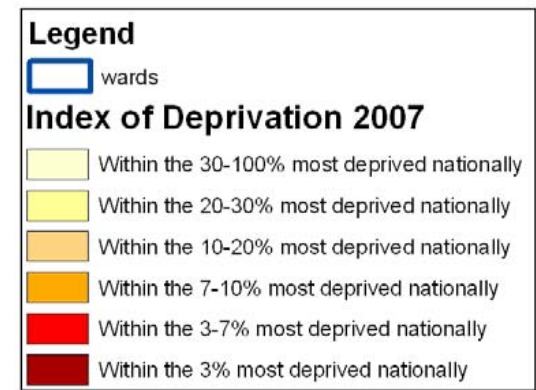
- Within the 30-100% most deprived nationally
- Within the 20-30% most deprived nationally
- Within the 10-20% most deprived nationally
- Within the 7-10% most deprived nationally
- Within the 3-7% most deprived nationally
- Within the 3% most deprived nationally

Source: Index of Deprivation 2007, Communities and local government

Figure 13 - Income deprivation affecting older people Index, Index of Deprivation 2007



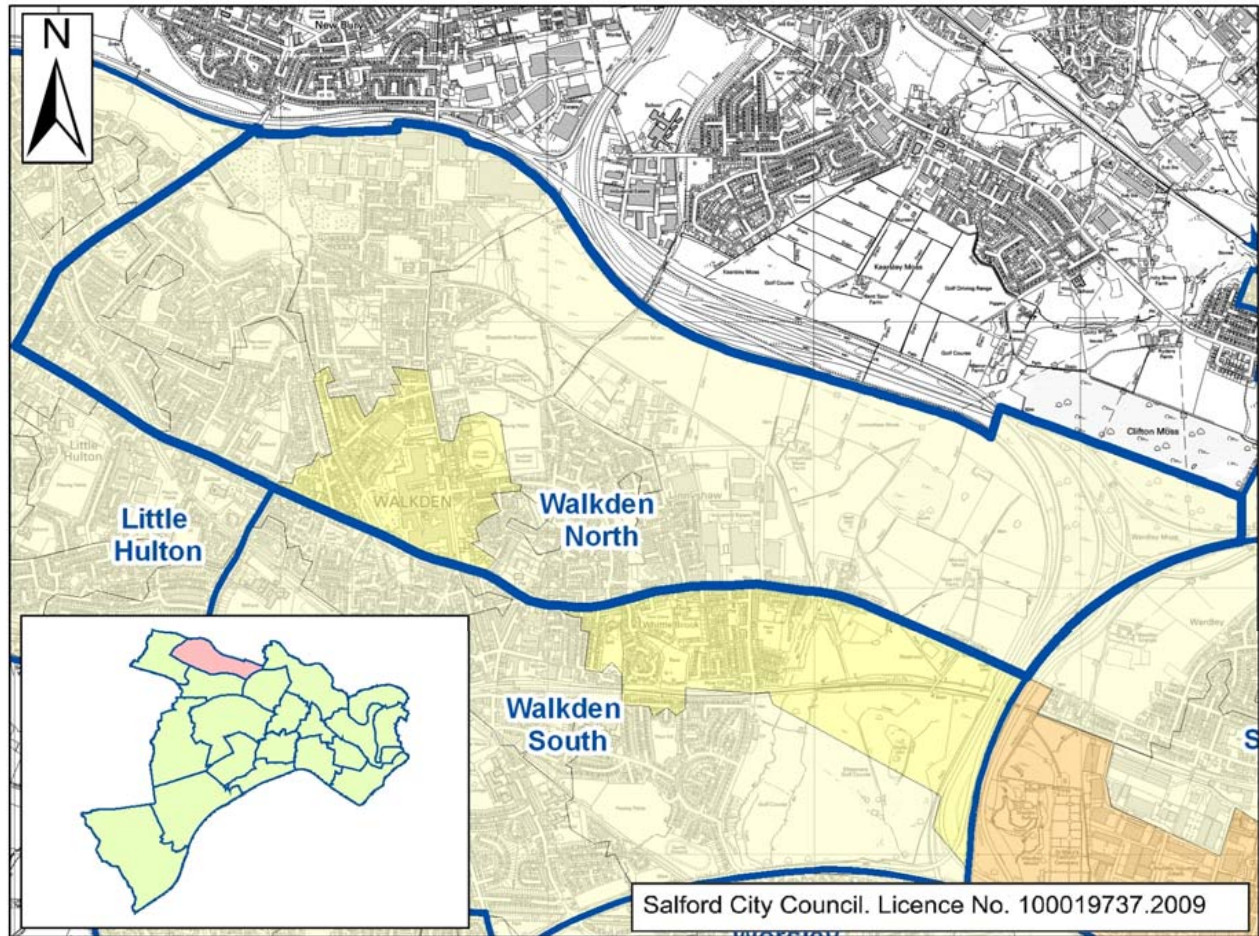
This subset of the income deprivation domain shows the percentage of a lower super output areas population aged 60 and over that are income deprived.



Source: Index of Deprivation 2007, Communities and local government

Enhancing Life in Salford

Figure 14 - Living environment, Index of Deprivation 2007



This Domain focuses on deprivation with respect to the characteristics of the living environment. It comprises two sub-domains: the 'indoors' living environment which measures the quality of housing and the 'outdoors' living environment, which contains two measures about air quality and road traffic accidents, which contains two measures about air quality and road traffic accidents.



Source: Index of Deprivation 2007, Communities and local government

Table 23 – Household spaces and accommodation type

	Total household spaces	Detached house or bungalow	Semi-detached house or bungalow	Terraced house or bungalow	Flat or maisonette in purpose built block	Flat or maisonette in converted or shared house, including bedsit	Flat or maisonette in commercial building	Caravan or other mobile or temporary structure
	No.	No.	No.	No.	No.	No.	No.	No.
Walkden North	5,374	199	1,996	2,276	808	42	37	20
Salford	98,786	8,509	36,546	32,124	18,777	1,803	856	134
Greater Manchester	1,092,419	144,491	415,904	357,516	139,550	24,125	9,849	984
North West	2,950,241	520,125	1,078,301	936,267	301,931	75,661	29,738	8,218
England	21,262,825	4,786,456	6,713,183	5,494,033	2,967,790	968,266	244,179	88,918
	%	%	%	%	%	%	%	%
Walkden North	100	3.7	37.1	42.4	15.0	0.8	0.7	0.4
<i>Salford</i>	<i>100</i>	<i>8.6</i>	<i>37.0</i>	<i>32.5</i>	<i>19.0</i>	<i>1.8</i>	<i>0.9</i>	<i>0.1</i>
<i>Greater Manchester</i>	<i>100</i>	<i>13.2</i>	<i>38.1</i>	<i>32.7</i>	<i>12.8</i>	<i>2.2</i>	<i>0.9</i>	<i>0.1</i>
<i>North West</i>	<i>100</i>	<i>17.6</i>	<i>36.5</i>	<i>31.7</i>	<i>10.2</i>	<i>2.6</i>	<i>1.0</i>	<i>0.3</i>
<i>England</i>	<i>100</i>	<i>22.5</i>	<i>31.6</i>	<i>25.8</i>	<i>14.0</i>	<i>4.6</i>	<i>1.1</i>	<i>0.4</i>

Source: 2001 Census; Office for National Statistics

Table 24 - Tenure (households)

	Tenure	Number of Properties			Percentage		
		2006	2007	2008	2006	2007	2008
Walkden North	RSL	101	101	102	1.93%	1.89%	1.89%
	Local Authority	1775	1732	1705	33.88%	32.41%	31.58%
	Private	3363	3511	3592	64.19%	65.70%	66.53%
	All Properties	5239	5344	5399	100.00%	100.00%	100.00%
Salford	RSL	5931	5765	5966	5.80%	5.61%	5.72%
	Local Authority	26008	25452	25280	25.45%	24.78%	24.23%
	Private	70241	71486	73075	68.74%	69.60%	70.05%
	All Properties	102180	102703	104321	100.00%	100.00%	100.00%

¹ Private includes owner occupier and privately rented

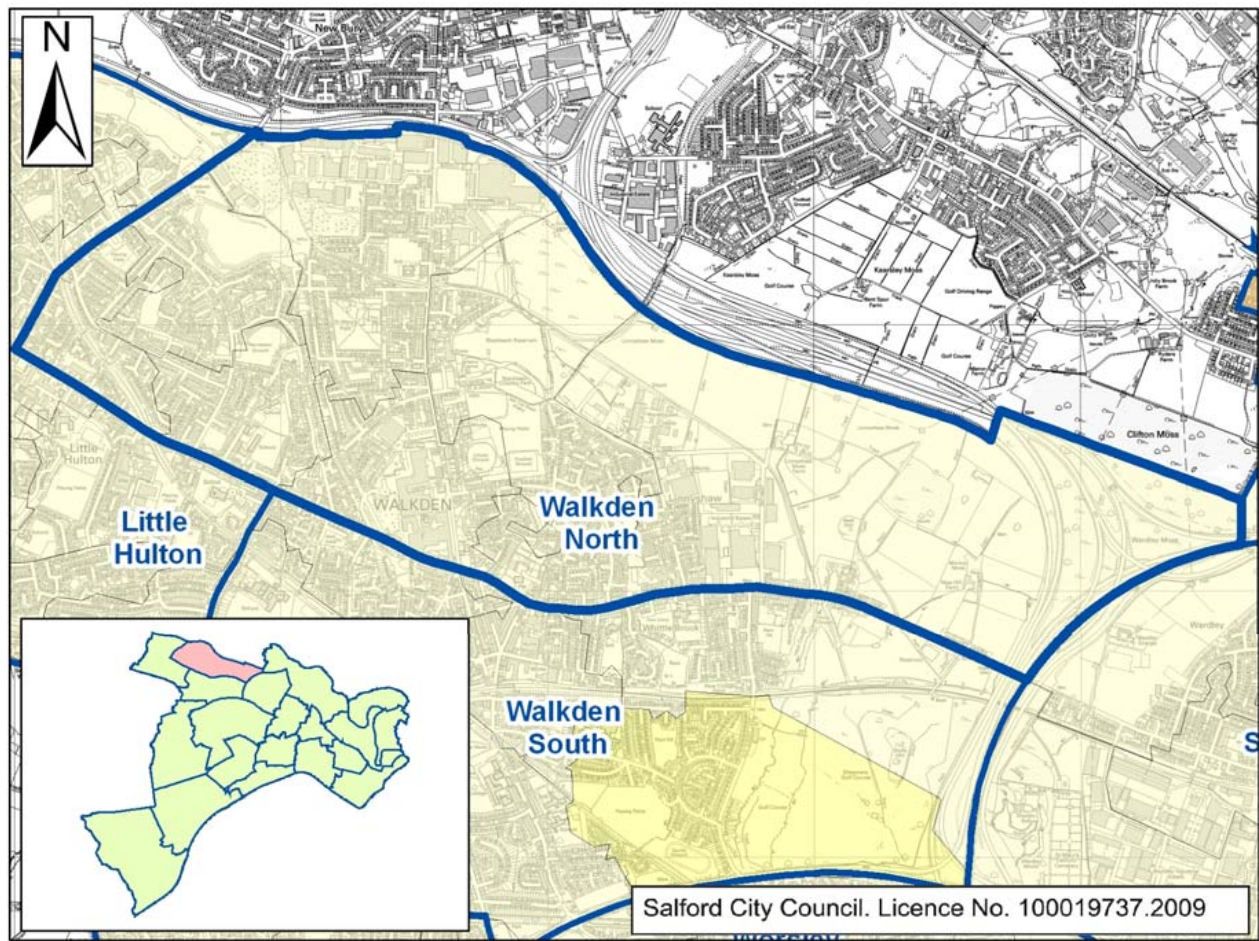
Source: RSL Stock List (RSL data), Saffron Stock Extract (Local Authority) and Council Tax (Private & All Properties) 2006 - 2008

Table 25 - Change in the number of dwellings (by new build, change of use and demolition) per financial year (April 1998 – March 2008)

Walkden North	1998-99	1999-00	2000-01	2001-02	2002-03	2003-04	2004-05	2005-06	2006-07	2007-08	Total 1998-2008
Stock additions	6	10	19	0	61	22	55	115	98	15	401
Stock reductions	3	4	1	0	63	12	103	8	21	4	219
Net dwelling change	3	6	18	0	-2	10	-48	107	77	11	182
Salford											
Stock additions	685	607	789	520	677	1,165	1,614	1,162	2,237	2,800	12,256
Stock reductions	136	366	271	614	525	344	761	709	513	194	4,433
Net dwelling change	549	241	518	-94	152	821	853	453	1,724	2,606	7,823

Source: Residential Development and Land Supply Report 2007/08, Salford City Council

Figure 15 - Barriers to housing and service domain, Index of Deprivation 2007



The purpose of this Domain is to measure barriers to housing and key local services. The indicators fall into two sub-domains: 'geographical barriers' and 'wider barriers' which also includes issues relating to access to housing, such as affordability.



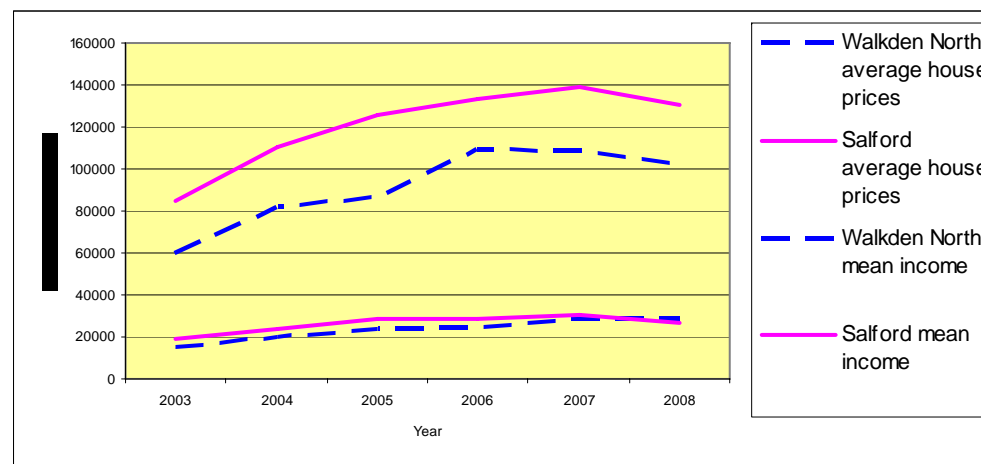
Source: Index of Deprivation 2007, Communities and local government

Table 26 - Affordability ratio (average house prices divided by mean household income) 2003 – 2008

	2003	2004	2005	2006	2007	2008	Change 2003-2008
Walkden North average house prices	£59,908	£82,062	£86,239	£109,613	£108,914	£102,109	70.4%
Walkden North mean income	£15,562	£19,728	£23,846	£25,161	£28,150	28,739	84.7%
Walkden North ratio income to house prices	3.8	4.2	3.6	4.4	3.9	3.6	-0.3
Salford average house prices	£84,909.73	£110,397.14	£125,572.00	£133,362.55	£138,940.39	£130,903	54.2%
Salford mean income	£19,418	£23,425	£28,362	£28,400	£30,912	£31,513	62.3%
Salford ratio income to house prices	4.4	4.7	4.4	4.7	4.5	4.2	-0.2

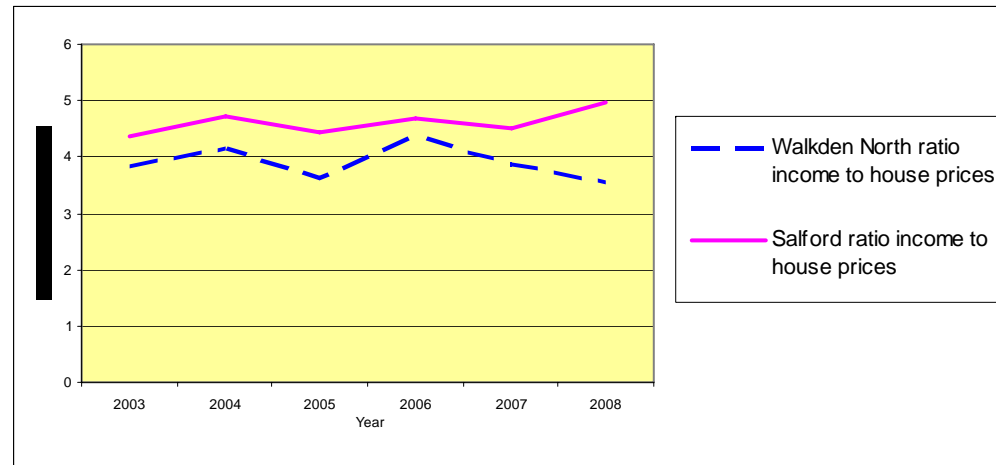
Source: Land Registry (House Price data) and CACI (Mean Income)

Figure 16 - Mean household Income and house prices 2003 - 2008



Source: Land Registry (House Price data) and CACI (Mean Income)

Figure 17 - Affordability Ratio 2003 - 2008



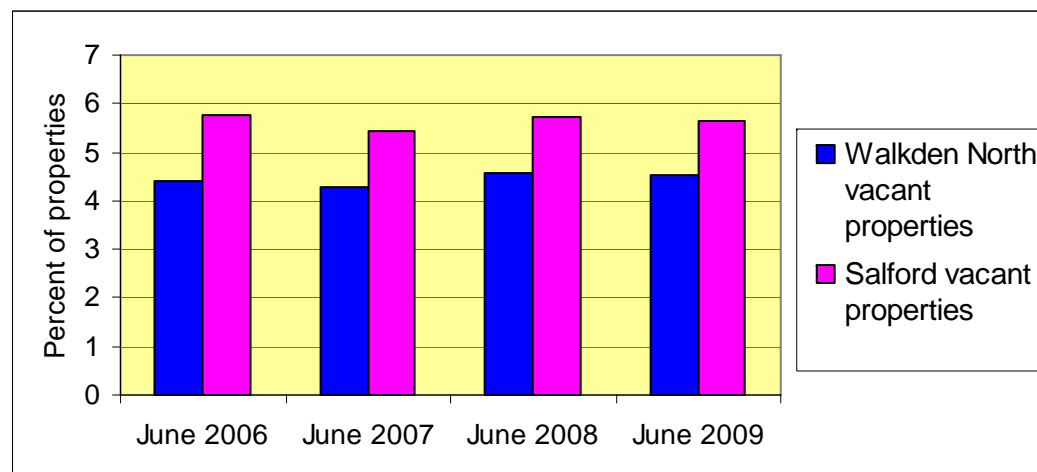
Source: Land Registry (House Price data) and CACI (Mean Income)

Table 27 - Vacant dwellings: all sectors 2006 – 2009

Total at the end of	June 2006	June 2007	June 2008	June 2009
	No.	No.	No.	No.
Walkden North vacant properties	231	229	248	246
Walkden North properties	5,262	5,342	5,413	5419
Salford vacant properties	5,912	5,579	5,999	5971
Salford properties	102,421	102,890	104,934	106045
	%	%	%	%
<i>Walkden North vacant properties</i>	4.4	4.3	4.6	4.5
<i>Salford vacant properties</i>	5.8	5.4	5.7	5.6

Source: Council Tax Data, Salford City Council

Figure 18 - Vacant dwellings trend: all Sectors 2006 - 2009



Source: Council Tax Data, Salford City Council

Table 28 - Household amenities

	All households	With central heating and sole use of bath/ shower and toilet	Without central heating or sole use of bath/ shower and toilet	Without central heating with sole use of bath/ shower and toilet	With central heating without sole use of bath/ shower and toilet	Households with an occupancy rating of -1 or less
	No.	No.	No.	No.	No.	No.
Walkden North	5,059	4,736	3	313	15	287
Salford	94,237	87,388	77	6,597	225	5,513
Greater Manchester	1,040,231	948,994	1,180	87,382	2,675	66,698
North West	2,812,789	2,473,718	3,690	328,956	6,425	152,248
England	20,451,427	18,640,577	32,739	1,711,405	66,706	1,457,512
	%	%	%	%	%	%
Walkden North	100	93.6	0.1	6.2	0.3	5.7
<i>Salford</i>	<i>100</i>	<i>92.7</i>	<i>0.1</i>	<i>7.0</i>	<i>0.2</i>	<i>5.9</i>
<i>Greater Manchester</i>	<i>100</i>	<i>91.2</i>	<i>0.1</i>	<i>8.4</i>	<i>0.3</i>	<i>6.4</i>
<i>North West</i>	<i>100</i>	<i>87.9</i>	<i>0.1</i>	<i>11.7</i>	<i>0.2</i>	<i>5.4</i>
<i>England</i>	<i>100</i>	<i>91.1</i>	<i>0.2</i>	<i>8.4</i>	<i>0.3</i>	<i>7.1</i>

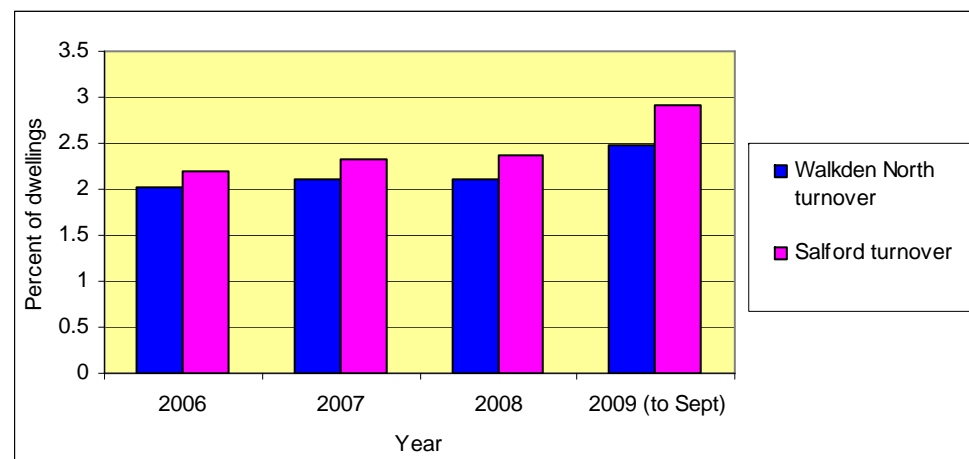
Source: 2001 Census; Office for National Statistics

Table 29 - Changes in household occupancy (Average monthly turnover)

Average monthly turnover in the year	2006	2007	2008	2009 (to Sept)
	No.	No.	No.	No.
Walkden North changes	105.8	112.4	113.9	134.3
Walkden North average of properties	5,254	5,357	5,405	5,420
Salford changes	2,244	2,401	2,478	3,089
Salford average of properties	102,203	103,060	104,783	106,025
	%	%	%	%
Walkden North turnover	2.0	2.1	2.1	2.5
<i>Salford turnover</i>	2.2	2.3	2.4	2.9

Source: Council Tax Data, Salford City Council

Figure 19 - Changes in Figure household occupancy trend (Average monthly turnover)



Source: Council Tax Data, Salford City Council

Data compiled by;
Information & Research Group
Spatial Planning Section
Sustainable Regeneration Directorate
Salford City Council
Salford Civic Centre
Chorley Road, Swinton
M27 5BY

Enquiries to:
Nick Ash • tel: 0161 793 3660 • <mailto:nick.ash@salford.gov.uk>

Salford City Council

Spatial Planning

Sustainable Regeneration Directorate
Salford Civic Centre
Chorley Road
Swinton
Salford
M27 5BY

Telephone : 0161 793 3660