

SALFORD

AUGUST 1999

RD

2

PEOPLE



WIN a family day
at Blackpool Pleasure
Beach!

PLUS

Cover Story: **Woodland Walk**,
(opening of Irlam's Nursery Wood)

PLUS: Take a look behind the scenes at the civic
Get to the front of the queue for leisure savings
Give our recycling superhero a name
Kosovars make themselves at home - thanks to you
Help us crack crime
Salford Housing News

Contents page sponsored by:

The COOPERATIVE BANK

See our advert on page 6



SALFORD PEOPLE

CONTENTS

AUGUST 1999 • Issue 2

2 News 

4 Win a family day out

7 Fit City
Get fitter and save cash!

8 Green page
Lame our bin competition.

11 Win a Millennium Night Out

12 In person
Lynn Wallwork describes the emergency action that has helped Salford's Kosovo refugees

14 Closer to the People update

16 Cracking crime to make Salford safer 

18 Salford Housing News

22 Voluntary sector

23 A to Z of services

24 What's ON in Salford?

Salford People is a City of Salford publication. It is managed by an editorial board made up of members of the city council, edited and administered by the city council's communications and public relations unit and is designed by the graphics unit. The second edition will be distributed week commencing Monday 26 July. Content, advertising: *Communications and public relations, 793 3157*; Layout, graphics unit 793 3761; Printing: Trafford Press, 872 2991; Distribution, to more than 106,000 households by the Royal Mail's door-to-door service. Contact: Editorial board, Salford People, FREEPOST NWW1358, Swinton M27 7BD.

City of Salford

£1 MILLION revamp in Little Hulton

LITTLE Hulton precinct is in the middle of a major £1 million-plus transformation.

Thanks to a successful city council bid for capital challenge cash from Whitehall, the district centre is getting a facelift that will include a new front to every shop and a new canopy for shoppers.

The car park and square will also be re-paved.

Housing chiefs are also

improving flats above the shops, giving them all new doors, windows, kitchens and central heating.

Burtonwood brewers are also backing the refurbishment with an upgrade for the Cyn's Tavern pub and its surroundings.

The massive programme of work, being carried out by contractors Blakeley Tonge and Partners, will inevitably cause

disruption to residents and shoppers alike.

Housing committee chairman Councillor David Lancaster explained: "We know this work will mean noise, dust and disturbance, and we can only apologise for that.

"But once the work is finished people will see a superb new precinct and I'm sure they'll see a huge improvement to the area."



SWIMMERS' STROKE OF GENIUS

TOP Salford swimmers' top performances are bringing international glory to the city. England star Adrian Turner represented his country at the Commonwealth Games in Malaysia earlier this year before captaining City of Salford swimming team to fourth place in the Speedo National Championships at Crystal Palace.

Meanwhile, golden girl Sarah Bailey, already an MBE after proving herself best in the pool at the Paralympics, joined fellow city swimmers Richie Barber and Giles Long in the GB team at the European disabled championships in August.



WHEELS MEALS FROZEN

MEALS on wheels are now available frozen, city wide.

Social services bosses are now offering frozen meals to more people that want them after a successful pilot launch in Swinton and Irlam.

Now the frozen meal service is to be extended to Worsley, Walkden, Little Hulton, Claremont, Weaste, Irlams o' th' Height and Seedley.

Instead of the meals being cooked first and then passed out, customers can reheat frozen meals, distributed daily by

council delivery vans.

The result is cheaper meals and more convenience for the customers, who don't have to wait in for a delivery, and who can reheat their food exactly when they want to eat it.

But progress hasn't forgotten that frozen food doesn't suit everyone - people who still want the traditional hot meals can still ask for them instead.

Explained social services committee chairman Councillor Peter Connor: "I have tasted these meals myself, and I must say I was impressed. I think this is a very

important innovation and it has proved extremely popular.

"We haven't forgotten those who want hot meals brought to them, but we do find that most people prefer to choose exactly when they will sit down to eat."



NEW NHS IN SALFORD?

SALFORD'S Community Health Council has marked its silver anniversary with a pledge to find a new approach for health and well-being for Salford people.

The CHC works to represent the interests of residents in the NHS, and has put forward plans for a 'New CHC' designed to encourage more local people to participate in improving health and well-being in the city.

The plans are set out in the document: 'A New Approach for Health and Well-Being', available from the CHC on 789 0474.



TRIATHLON TEST FOR SALFORD QUAYS

TRIATHLON teams will go head to head at Salford Quays this month as Salford bids for a share of the Commonwealth Games action.

Salford City Council bosses hope to host a triathlon event during the 2002 sporting bonanza, and have helped organise the competition at the former docklands on Sunday 22 August to test the viability of their plans.

Triathlon enthusiasts from across the region will race against the clock in the endurance contest, which comprises a 750m swim, 20km cycle ride and a 5km run.

Said council leader Councillor Bill Hinds: "We have been looking for ways to exploit the potential offered by Salford Quays and the Commonwealth Games is a unique opportunity.

"The Quays is sure to be a superb setting for such a dramatic sporting contest."

20 years on.....

HUMPHREY Booth Day Centre regulars marked the 20th anniversary of their favourite community centre in style. A super party was organised for everyone who uses the Broughton day centre for older people, which is in Heath Avenue.

Said centre manager Edna Marsland: "We had a lovely party with lunch for 120 with a raffle and an entertainer and everyone had a grand time."

"One of our assistants, Eileen Hunter, retired after 17 years service, so it was a chance to mark that, too."

Humphrey Booth Day Centre is owned by Booth Charities but run by City of Salford community and social services chiefs.

In common with Salford's seven day centres for older people city wide, it offers a range of care and support for older people who live at home.

Added Edna: "We have more than 60 people here each day for lunch or other activities which we'll organise specially for them."



a better deal

SALFORD Forum of Older People is out to get a better deal for the city's older people.

The group aims to be the focus for all organisations for older people in the city, voice their concerns to the proper agencies, and raise the quality of life for all older people. For more details about the Forum, contact secretary Frances Green at 45 Southway, Eccles, M30 0LJ.

Or join the Forum's monthly meeting at the civic centre, Chorley Road, Swinton on the second Friday in every month, at 1.30pm.



VIP SPIES WINDOW OF OPPORTUNITY

SALFORD College has opened a brand new City Campus in the inner city.

The impressive £2.5 million centre recently won a visit from minister for lifelong learning George Mudie MP.

He paused to add bricks to a wall students were building within the campus, and stopped off to visit new facilities including the Frederick Road centre's modern City Cafe.



IT HAS cost less than 17p to design, print and distribute this edition of Salford People to YOU.

NARBONNE LINKS RESTORED

A FORMER Mayor is urging local people to join a brand new town twinning association that aims to forge new links with the French town of Narbonne.

Roy Rhodes and his late wife Constance were behind links first set up in the 1950s.

They hosted the first visitors, and were instrumental in making sure that hundreds of local schoolchildren had the chance of a trip to the twin town as part of the links.

They both later served as Mayor of Eccles, Constance in 1966 and Roy in 1972.

Now, Mr Rhodes is a vice-president of a Salford-Narbonne Twinning Association, as Salford City Council chiefs hope to revive the links.

A committee has been appointed, with Councillor David Lancaster the chairman.

Explained Mr Rhodes: "Narbonne is a town near the seaside on the Mediterranean coast. We chose it as a twin for Eccles originally because of the differences between the two towns. Eccles was an industrial town, Narbonne is in a wine-growing area!"

"The first group of three came over in 1958/59. Two were the daughters of the captain of the local gendarmerie.

"I am still in touch with one of that group even now! But more than anything else these links are about children and giving them the chance of making friends through these kind of exchange visits."

WIN A FABULOUS, FUN-PACKED DAY OUT TO BLACKPOOL PLEASURE BEACH



Salford City Council has teamed up with Blackpool Pleasure Beach and we've got four books of Pink Knuckle ride tickets for our lucky readers to win, guaranteeing the very best of fun and thrills.

Endless hours of fun packed into 42 acres makes Blackpool Pleasure Beach the ideal place for all visitors - whatever your age.

There's so much to do and there's something for everyone with over 145 rides and attractions plus spectacular shows.

There's everything from thrilling white knuckle rides - the Pepsi Max Big One, which this year celebrates its 5th birthday, PlayStation - The Ride where riders are catapulted up a 210ft tower to leisurely cruises around the River Caves, get a bird's eye view from the overhead Monorail or relive the days of steam on the Pleasure Beach Express.

Just answer the question below and send the coupon back to the Salford People freepost address by Friday 13th August 1999.

Q. Which ride celebrates its 5th birthday this year?

Even if you're not the lucky winner there's still our great two-for-one offer with the voucher.

The Answer is:

Name

Address

.....

.....

Tel no

Please enter me in a draw for free Blackpool Pleasure Beach tickets. Return this coupon to:

Salford People,
FREEPOST NWW1358,
Swinton M27 7BD.



TWIN TRIP FOR 33 KIDS.....

FANCY a trip to Paris?

Fancy taking 33 excited primary school pupils along with you?

Well, that's what brave Height teacher Julie Carson has been planning since last year!

Staff and pupils from St John's travelled to Salford's twin town of

St Ouen last month, to further their studies of the EU.

The town is a suburb of the glamorous French capital, and hosted a six-day trip from the years five and six school group.

Said Julie: "I'm certain this will be a great experience for all of us."

BUY 1 GET 1 FREE RIDE TICKET OFFER - SAVE £30!



Buy ONE book of **Blockbuster** Ride Tickets, at Blackpool Pleasure Beach, and get another bumper book absolutely **FREE!**

With this offer, you'll walk away with a selection of 40 ride tickets and 8 big bonus show vouchers.

Simply present this voucher at the Guest Relations Offices (North is under Noah's Ark and South is at the South entrance near the Pepsi Max Big One). Buy one book of

Blockbuster tickets and receive another free.

Only one voucher per person. Show seats subject to availability and special admission details may apply. This voucher cannot be used in conjunction with any other offer or promotion. Photocopies not accepted. No cash alternative. BPB reserve the right to alter ticket content. Valid until November 7th 1999 excluding Bank Holiday, Sundays and Mondays.

BPB Ref: 139

VOUCHER

SALFORD

BRITAIN'S BIGGEST TOURIST ATTRACTION

FORMER BREWERY

THE disused Chester's brewery off Chapel Street is to bring 340 new jobs to the city.

Developers the Greater Manchester Property Venture Fund will fund the £11.5 million investment, which will provide seven floors of office space at the Deva Centre, right on the border with Manchester.

Refurbishment of the landmark building will open up Cook Street, one of the city's oldest streets, by creating 23 self-contained business units.

City council leader Councillor Bill Hinds: "This is more great news for this area of Chapel Street, with the Inland Revenue building and the RF Hotels development already secured for the area. More importantly, here is the chance of more jobs for Salford people."

IS TOAST OF THE CITY



BE A FRIEND TO YOUR MUSEUM!

WHY not be a friend of Salford's museums and galleries?

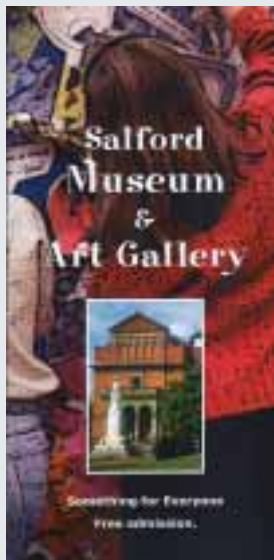
The Friends of Salford Museums Association has more than 150 members who:

- get out and about visiting attractions around the country;
- enjoy social events at the city's museums;
- meet artists and historians;
- take part in arts and craft sessions and;
- get special invitations to museum events.

Active member Simon Donnelly is a heritage studies graduate currently working as a volunteer helping to organise all the varied items in the Lowry collection - even though he lives in the north east!

He said: "Being a Friend gets you access to events and information that otherwise you might miss out on. We want more people to come and join us."

Look out for the Friends' recruitment campaign 11-19 September, or write to our Freepost address and we'll send you details of the Association, or call Sheena Macfarlane on 736 2649 for more details.



MOVE OVER LOWRY! GET READY FOR LIFETIMES

DO you have a tale to tell about life in Salford? Salford Museum and Art Gallery needs your help to create a new visitor attraction telling the story of Salford and its people.

LifeTimes is the working title of a new museum, which is set to open at Salford Museum and Art Gallery in autumn 2002. Visitors will be able to experience 200 years of Salford's social and industrial history through a lively mix of artefacts, exhibits, demonstrations and hands-on activities.

Staff at Salford Museum and Art Gallery are hoping local people will get involved with the development of LifeTimes, by either recording their recollections about life in the city, or

attending consultation workshops.

"We can only create this exciting development with the help of the people of Salford," said Councillor Maureen Lea, chairman of the arts and leisure committee.

"It's your city, your museum, your LifeTimes."

Work on the project will begin in 2001, after the gallery's prestigious LS Lowry collection moves to 'The Lowry' - a purpose-built multi media arts centre at Salford Quays.

In the meantime, visitors can look forward to an innovative series of exhibitions in the year 2000 to coincide with Salford Museum and Art Gallery's 150th anniversary.

To find how you can contribute to LifeTimes, or to join the mailing list, contact Andrew Roach on 0161 736 9448.

CITY POISED FOR SRB NEWS

GRANT aid for Seedley and Langworthy will help transform the area. Council bosses were hoping £25 million of Whitehall Single Regeneration Budget aid would be confirmed during July.



The cash will be spent in line with an action plan drawn up after consultation with local people. More than 1,000 residents have already attended public meetings in the area and further door-to-door surveys have also invited people to have a say. For a summary of the SRB grant bid document, and to be kept informed about plans for the area, write to our freepost address.

COULD YOU FOSTER?

We need:

Short break foster carers to look after children for occasional weekends

Short term foster carers to look after children full-time until things are sorted

Long term fostering means caring for older children until they are grown up

Don't rule yourself out - you don't need to be married,
employed, or a parent already

**City of
Salford**
Community & Social Services

Salford Family Placement Team
RING 799 1762



**City of
Salford**

**SALFORD
ADVANCED MOTORISTS**

DO YOU ENJOY DRIVING

Do you consider yourself an experienced driver?

Would you like the opportunity to

measure your driving ability and take the Advanced Driving Test?

**ADVANCED DRIVER TRAINING COURSES
THROUGHOUT THE YEAR**

For further details contact: The City of Salford Road Safety Unit
Tel: 0161 793 3807

Interested in advanced motorcycle then contact
Joanne or Brian Tel: 0161 775 7185



Direct Personal Loan Scheme for readers of The Salford People

The COOPERATIVE BANK

The rates have been negotiated for you and are amongst the best on the market

There are no 'arrangement' or 'set up' fees

Repayments by Standing Order for your convenience

Loans are available from £1,000 up to £15,000

The loan monies are transferred direct to your own bank account

An instant decision can be obtained 7 days a week

With Repayment Protection. Actual payments may differ by a few pence.				
LOAN	84 MONTHS	36 MONTHS	12 MONTHS	FIXED APR
£10,000	213.71	371.40	954.72	9.9%
£5,050	117.34	195.09	489.18	12.9%
£1,000	25.77	40.61	98.67	16.9%

Without Repayment Protection. Actual payments may differ by a few pence.				
LOAN	84 MONTHS	36 MONTHS	12 MONTHS	FIXED APR
£10,000	177.67	333.28	889.91	12.9%
£5,050	97.07	174.81	455.77	15.9%
£1,000	20.69	35.89	91.49	18.9%

SIMPLY RING FREEPHONE

For an instant decision or further details

0800 591 682

QUOTING REF. '791713'

to the operator to obtain your Direct Loan

Lines are open 7 days a week
8.00am to 9.00pm Monday to Friday
8.00am to 8.00pm Saturday and 9.00am to 6.00pm Sunday

Example 1: If you wish to borrow £6,000 over 48 months with repayment protection, the monthly repayment will be £189.26. Total repayment over the term of the loan: £9,084.48 at an APR of 12.9%. **Example 2:** If you wish to borrow £6,000 over 48 months without repayment protection, the monthly repayment will be £166.56. Total repayment over the term of the loan: £7,994.88 at an APR of 15.9%.
Written quotations available on request. Rates correct at time of printing (05/99). All loans subject to status and available to persons aged from 18 years upto their 70th birthday. The Bank reserves the right to decline any application.
Registered Office: The Co-operative Bank p.l.c., 1 Balloon Street, Manchester M60 4EP. Registered number: 990937



THE SALFORDIAN HOTEL

Southport

Try our wide range of holiday packages.
Our famous hotel includes:

A fully accessible building • Three meals a day with a choice of menus • Two comfortable lounges with TV • Fully licensed bar • Shops and pubs within a short distance

We specially cater for older people with disabilities.

For further information about availability please phone
City Venues on 0161 790 4584

The Hotel is independently operated and managed by The
Salfordian Trust Company Ltd. Reg No. 3438263

SALFORD'S Passport to Leisure can help save you money again and again. Because once you've bought a Passport, you qualify for a discount each time you visit a Fit City centre. Not only that, but by using your Passport regularly you build up credits towards bonus rewards. Although current Passports don't expire until the end of August, the sooner you get a new one, the sooner you can start saving cash and saving towards those bonuses. That's because you can buy a Passport at any Fit City centre from Monday 2 August. As usual, Salford People can help get you to the front of the queue. Check out the panel below and select the type of Passport that suits you, then get along to your local Fit City Centre. If you have any queries about the Passport to Leisure scheme, call your local centre for more details or send to our Freepost address for our leaflet.

PICK UP A **PASSPORT TO LEISURE**



Living or working in the City of Salford	£4.95
Not resident/not working in Salford	£9.95
Junior membership, under 16s	£2.50
Family membership	£9.95

Over 60 special rates apply - see your local Fit City centre



SUMMER **SIZZLERS** AT YOUR FIT CITY CENTRE

SAMPLE Sport 'n' Splash this summer at Fit City Sports Centres. All the centres are running multi-activity fun sessions every week day this summer - perfect for keeping children entertained throughout the school holidays. All sessions are fully supervised by qualified staff and sports development sessions are available at most centres, too. Most sessions cost just a pound or two. Check with your local Fit City Centre for more details.

FIT CITY BROUGHTON CAMP ST, BROUGHTON TEL: 0161 792 2375

Enjoy a wide range of supervised sporting activities and games - from bouncy castle and arts and crafts to competitions, trips and football coaching sessions.
Mon 26 July to Fri 27 August • Mon-Fri 10.30am-12.15pm (5-7 year olds) • LIMITED PLACES BOOKING AVAILABLE • 1pm-3pm (over 8s)

FIT CITY BROUGHTON POOL GREAT CHEETHAM ST WEST TEL: 0161 792 2847

Great daily playscheme - get out the glue, paints and cereal boxes and let your imagination go wild! Plus loads of games and competitions too. Splash out in a giant shuttle slide!
Monday 26 July to Friday 27 August • Mon-Fri playscheme 8.30am-12.30pm 8-14s • LIMITED PLACES BOOKING ADVISABLE • splash session 1.15pm-3.15pm over 5s - under 8s must be accompanied by an adult

FIT CITY CADISHHEAD LORD ST TEL: 0161 775 7928

There's a wild party happening this summer at Fit City Cadishead - seaside trips, roller hockey, football, badminton, theme park visits, competitions and games.
Mon 26 July to Fri 27 August • Mon-Fri 10am-11.45pm 5-7 year olds • LIMITED PLACES PRE BOOKING AVAILABLE • 1pm-3pm over 8s football coaching 3pm-4pm.

FIT CITY CLARENDON LIVERPOOL ST, SALFORD 5 TEL: 0161 736 1494

Splash out on our very own inflatable treasure island and avoid the sharks in the pool! Delve into the junk box during our playscheme activities and join a team for a game of volleyball, hockey or football.
Mon 26 July to Fri 27 August • Mon-Fri Splash sessions 1pm-3pm • over 8s Outdoor sports 1pm-3pm, over 8s

FIT CITY ECCLES BARTON LANE TEL: 0161 787 7107

Join in the Fun and Floats and Treasure Island sessions in the pool, or play volleyball, handball, basketball, hockey, football and lots more games in the sports hall. All this and day trips too! 8-14s.
Mon 26 July to Fri 27 August • Mon-Fri Fun and Floats 10.30am-12 noon, Treasure Island 1.15pm-3.00pm and playscheme 9.30am-11.15am • 5-7 year olds 1pm-3pm • over 8s Sports Coaching Sessions each morning, please phone for more details.

FIT CITY IRLAM POOL LIVERPOOL ROAD, IRLAM M44 TEL: 0161 775 4134

Come and join in the fun at our afternoon splash sessions, which include the monster slide. You can also get stuck into a variety of our outdoor sports like rounders, cricket and football.
Mon 26 July to Fri 27 August • Mon-Fri Splash sessions 1pm-3pm • over 8s Outdoor sports 1pm-3pm, over 8s



FIT CITY ORDSALL CRAVEN DRIVE, ORDSALL M5 TEL: 0161 848 0646

Check out our afternoon sessions with activities including badminton, uni-hoc, handball, basketball and football! 8-14s
Mon 26 July to Fri 27 August • Mon-Fri 2pm-4pm

FIT CITY PENDLEBURY CROMWELL ROAD, SWINTON M27 TEL: 0161 793 1750

Hey kids, don't be down, Come to the best centre in town, We've got games, bouncers and even splash, All for a measly bit of your cash So come and join our friendly crew, You'll be glad you did - there's plenty to do!
Monday 26 July to Friday 27 August • Mon-Fri Playscheme 1pm-4pm 8-14s • Pool Splash 10am-12 noon 8-14s • Treasure Island 1.15pm-3pm 8-14s

FIT CITY WALKDEN BIRCH ROAD, WALKDEN M28 TEL: 0161 790 2084

Join our fun playscheme for a game of badminton, football, squash and rounders. Plus, day trips and inter centre competitions - great for budding David Beckhams and Sally Gunnells!
Mon 26 July to Fri 27 August • Mon-Fri 12 noon-3pm 8-14s

FIT CITY WORSLEY POOL BRIDGEWATER ROAD, WALKDEN M28 TEL: 0161 790 2084

Join in the arts activities, competitions and bouncy castle at Fit City Worsley's daily playscheme, plus super Splash Sessions with giant inflatables and lots of watery fun and games throughout the summer.
Mon 26 July to Fri 27 August • Playscheme Mon-Thur 10am-11.45am 6-11s • Splash Sessions 10am-12 noon 8-13s • Inflatables 1pm-3pm, 8-13s

GREEN CITY

SALFORD will be one of the greenest cities in the country by the end of next year - if the city council's bold predictions come true.

Council bosses have just launched an ambitious action plan designed to transform recycling rates in the city.

There's already a kerbside textile recycling scheme and a network of 13 recycling centres right across the city.

But the proportion of domestic waste recycled is still only 2.8 per cent. One reason for that

is that our consumer society means the amount of waste produced has quadrupled over the last five years. Salford people alone produce around 100,000 tonnes of waste each year.

Now city bosses have an imaginative programme that might just mean Salford hits the government's stiff target of recycling 25 per cent of all domestic waste by the end of the year 2000.

- First, they aim to boost newspaper recycling with a city-wide kerbside collection scheme that was launched in Walkden and Boothstown during May and is already bringing in four tonnes of waste a day.

Since then it has been extended to Swinton. When it is fully operational by the end of the year, it will be the first such scheme in the country to cover the whole of a local authority area. Within two years,

Salford will be recycling 5,000 tonnes of newspapers and magazines, and improve the recycling rate to 7.8 per cent;

- Greater Manchester Waste are beefing up their waste handling centre in Brindleheath, Salford, and will soon be able to take organic waste out of the domestic waste stream to make compost to aid the Red Rose Forest programme of tree planting. That will add another 17 per cent to Salford's recycling performance within a year;

- A similar aluminium separation operation at Brindleheath will soon be able to extract that metal saving a further two per cent.

- A new plastics recycling facility will also take plastics out of the waste stream.

Said environmental services committee chairman Councillor John Hincks: "This is a very bold plan of action that between ourselves and Greater Manchester Waste might just see our city leading the way when it comes to recycling.

"But it is important to remember that none of this will work without the active support of local people. We need people to think twice before they simply throw rubbish away. Despite all that the local authority is prepared to do, we still need people to actively save newspapers and magazines, bottles, plastics, old clothes and shoes, and aluminium cans for recycling.

"Everyone can do their bit to help make this the greenest city in the land."



YOUR LOCAL RECYCLE CENTRES LISTED

MONTON (Monton Rd car park)	Newspapers, Magazines, Textiles, Aluminium Cans, Glass.
BOOTHSTOWN (Standfield Precinct car park)	Newspapers, Magazines, Textiles, Aluminium Cans, Glass.
ECCLES (Bentcliffe Way car park)	Newspapers, Magazines, Glass.
ECCLES (Regent St car park)	Newspapers, Magazines, Aluminium Cans, Glass.
LITTLE HULTON (Shopping Precinct)	Newspapers, Magazines, Textiles, Aluminium Cans, Glass.
SWINTON (Safeways car park)	Newspapers, Magazines, Textiles, Glass, Books, Aluminium cans, Shoes.
WALKDEN (Tesco car park)	Newspapers, Magazines, Textiles, Aluminium Cans, Glasses, Books, Shoes.
ORDSALL (Sainsbury Regent Rd)	Newspapers, Magazines, Textiles, Aluminium Cans, Glass.
SWINTON (car park Crompton House)	Newspapers, Magazines.
IRLAM (Tesco car park)	Newspapers, Magazines, Textiles, Aluminium Cans, Glass, Plastics, Shoes, Books.
LWR BROUGHTON (Mocha Parade)	Newspapers, Magazines, Textiles, Glass.
ECCLES (John William St car park)	Newspapers, Magazines, Textiles, Glass, Aluminium Cans.
SALFORD PRECINCT (Fitzwarren St car park)	Newspapers, Magazines, Textiles, Glass.

Cowboy Capers
Wild West Entertainment for the Summer
Every Tuesday from 27 July to 31 August
ALL FREE
Hey little pardners, join us here at Big S Shopping for a programme of Wild West antics to show you how the West was fun!
SALFORD Shopping City
PENDLETON

ECCLES
is YOUR local shopping and market centre
Join in the fun of our Wakes Week celebrations on 28 & 29 August 1999
look out for details.....
talking Town



'GREEN' DAY OF FUN FOR KIDS

ENVIRONMENT Day meant an action-packed day out for more than 1,000 Salford schoolkids at Swinton's civic centre.

The May event gives 'green' groups the chance to involve youngsters in a hoard of hands on activities connected with protecting the environment.

And one group of schoolkids landed a bonus treat. Eccles CofE High won a super trip to the Earth Centre - just for turning up!

The prize, kindly donated by national body Going for Green, means a class from the Northfleet Road school will get the chance to visit the super Lottery-funded centre near Doncaster, packed with even more fun things to do linked to the environment.

Not only will the group get to learn a lot from their day out - they'll explain a lot more about their day in a future edition of Salford People!



CAN YOU HELP US NAME OUR RECYCLING MASCOT?

THIS chirpy bin is a real character, always keeping an eye out for litter and always trying to find a new use for rubbish other people have thrown away.

Anyone can enter, young or old, we just want a name for the bin and a few details about what he gets up to. We've got shopping vouchers and a host of other surprise goodies to give away to the best suggestions, **and there's a £50 voucher prize for the idea we use.**

It belongs to our environmental services people, who have just stepped up kerbside newspaper

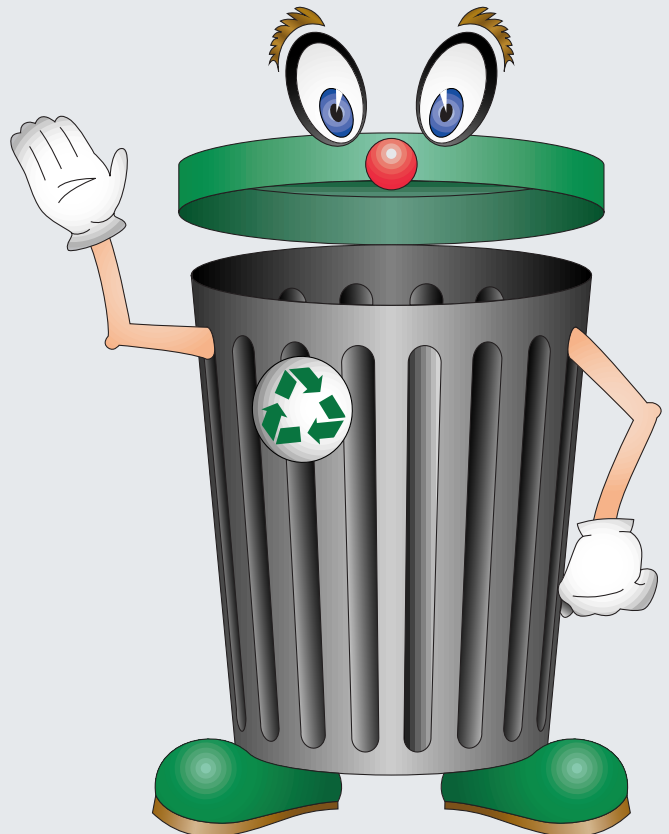
recycling across Swinton after a successful launch in the Walkden and Boothstown areas.

The scheme will be extended across the city by next year, like our textiles recycling scheme which is already up and running.

As well as that, of course, there's our network of recycling centres across the city, listed opposite.

Just drop us a line with your name, address and phone number to Salford People, Freepost NWW1358, Swinton, M27 7BD.

All entries must be in by the end of August.



Shop 'til you drop at Salford's Markets!

SALFORD SHOPPING CITY
open Mon, Wed, Fri, Sat, flea market
Thu, car boot sale Sat, food hall Mon,
Wed, Thu, Fri, Sat
ECCLES TOWN CENTRE
open Tues, Thurs, Sat
PENDLEBURY
open Tues, Fri, Sat, flea market Wed
WALKDEN
town centre Mon-Sat

Coming soon...

Swinton town centre due to open late 1999
For more information about markets in Salford, call 736 7845.

EDUCATION & LEISURE DIRECTORATE

Citywide and Leisure Services DSO

Providing a range of quality commercial services in locations across the city, we require enthusiastic individuals to help us build on our success. In particular we are looking for:

Casual Bar and/or Silver Service Staff

£15.00 for first 3 1/2 hours and £3.60 ph thereafter (Ref 2000/sp)

Working on wedding receptions, celebration parties etc, in the evening and/or weekends at Lancastrian Hall, Pembroke Hall, Buile Hill Park Banqueting Suite and Worsley Court House. You must be aged 18+ to work in bars. A uniform is provided.

Casual Catering Assistants

At age 18 is either £4.47ph or £4.54 ph dependent upon place of work (Ref 3000/sp)

Working at staff restaurants and cafes throughout the Salford area, you would be required to cover short term absences of permanent staff members. Duties include general food preparation, serving meals and general cleaning. Hours of work vary between each unit but are generally between 9.00am and 3.00pm, Monday to Friday. A full uniform is provided.

Casual Leisure Attendants

£4.63 ph or £4.79 ph depending on work undertaken/possession of the National Pool Lifeguard Certificate (Ref 5000/sp)

Assisting in creating a welcoming, clean and safe environment for customers visiting our leisure centres and swimming pools. General opening hours are 8.00am to 11.00pm, seven days per week. Flexible working hours are available.

Casual Cleaners

£4.47 ph (Ref 8000/sp)

Most of the work available is in schools but we also provide a cleaning service for other council premises (eg offices, sheltered housing schemes etc). Generally, school cleaning starts at about 3.30pm, office cleaning at 4.30pm, whilst some other premises may require an early morning start. The working week is usually Monday to Friday.

Application forms may be obtained from the Director of Personnel Services, Salford Civic Centre, Chorley Road, Swinton, Salford M27 5BN, tel. 0161 793 3507 (answerphone service after office hours). Minicom 0161 793 2544 (hearing impaired applicants only). Please quote post reference in all communications.

Salford City Council is striving to be an Equal Opportunities Employer and positively encourages applications from all sections of the community. The Authority operates a Job Share Scheme, details of which are available on request.



Casual Catering Assistants

£4.45 ph plus a meal provided whilst on duty (Ref 9000/sp)

To work in schools helping with food preparation, serving of meals and general cleaning within the kitchens. Hours vary but are usually between one and three hours per day, usually between 9.00am and 2.00pm, Monday to Friday during term-time.

All of our casual employment opportunities provide an excellent way of gaining valuable work experience. Appropriate training and support is given.

HOUSING SERVICES DIRECTORATE

Scheme Assistants (Casual and Relief Staff)

Petrie Court £5.69 ph plus enhancements (Ref 1559/sp)

Petrie Court is an 11 bedded Supported Accommodation Project for single people aged 16-25 years. We are seeking to establish a pool of staff who are able to provide cover for short term staff absences, as and when required.

Experience is less important than personal qualities. You must be available to work at short notice and be able to work unsocial hours (evenings, nights, weekends and bank holidays). You will be able to deal effectively with stressful situations and have the ability to remain calm under pressure. You will be tactful, diplomatic and assertive when necessary, and you will have an empathy with homeless young people.

DEVELOPMENT SERVICES DIRECTORATE

School Crossing Patrols

Permanent and Stand-by

Several school crossing points are without cover, and, as a consequence, children travelling to and from school are having to cross busy roads without assistance.

Why not consider becoming a School Crossing Patrol? You would play a valuable role in the local community. We, of course, provide full training and uniform. Anyone under 69 years of age is welcome to apply.

If you, a relative or friend think you can help, please contact the staff at the City of Salford Road Safety Unit, on 0161 793 3791, who will be happy to give further information on locations, pay and conditions etc.

City of
Salford

WE'RE OUT!

City schools celebrate overcoming Ofsted scrutiny

HEADTEACHER Bernadette Ardern stood before a crowded but silent staff room. All the staff were there, silent at the end of another busy day. She punched the air in front of her with a two-fisted salute: 'We're out!'. The room erupted.



FIVE STAR YOUTH SERVICE

YOUTH Service workers have earned a special award for achieving high standards. Duke of Edinburgh awards training in Salford has earned the

prestigious "five star" grading from national awards bosses. That makes Salford one of only four local authorities to achieve the top rating.

WINDSOR AND WESTWOOD PARK CELEBRATE

THAT moment of staff room celebration was the end of a fraught three years in the life of Windsor High School.

The school had been failed by Ofsted government inspectors in 1996.

But, after those years of close scrutiny and extra guidance from school inspectors and the city council's education chiefs, the school was out of special measures.

Eccles primary Westwood Park celebrated the same achievement just a few days later.

Ofsted failure is a serious business.

Schools that fail to improve are dubbed a 'failing' school. It's even possible they could be taken over by Whitehall experts, or closed altogether.

Only improved standards throughout the school can get you out of special measures.

Better attendance and exam performance, smarter dress, better teaching and administration of the school - even less litter. They all count to win the inspectors' approval and tip the balance back in a school's favour.



Said education committee chairman Councillor John Warmisham: "This was a great few days for the city and for these two schools. Any school under Ofsted scrutiny has to work hard to put things right. But these two have turned things around, and we should all mark and enjoy these successes."

Broughton's Lowry High School has also worked its way out of special measures this year.

PLAN WILL RID NORTHUMBERLAND HIGH OF UNWANTED TAG

NORTHUMBERLAND High School is the city's only school still in special measures.

The school is itself a special case, as it has only around 36 pupils, and is the base for emotionally and behaviourally disturbed children.

Councillor Warmisham was quick to spell out the future for the school.

He said: "The situation at Northumberland High School doesn't really reflect the hard work of the staff and pupils there.

"The main problem is the poor condition of the buildings.

"That's why we have drawn up plans now to close Northumberland and move it into part of the former Pope John Paul High School building. We believe that significant improvements to that building will also enable us to provide schooling in the city for more pupils who have these special needs.

"Many of them are currently sent to be taught outside the city as we don't have the capacity to deal with them properly at present. And we hope the government will allow us to seek private funding for a completely new building for that school. This is the sensible and practical answer to the difficult problems that school currently face."

WIN a Millennium night out!

There's a super New Year's Eve party at the Pembroke Halls, Walkden.

Just tick the box below and we'll send you a leaflet with details of how you can get a ticket for the event.

The party stars Souled as Seen plus the Mike Prince Disco. Your ticket includes buffet, bar, midnight cocktail and a commemorative gift.

If you return this coupon, you'll be entered in a free prize draw. A pair of tickets is on offer to our winner.

Winner will be notified by Wednesday 1 September.

For more details of the event, or to reserve your ticket, call City Venues on 790 4584.

Name

Address

Tel no

POST TO:
Salford People,
FREEPOST NWW1358,
Swinton. M27 7BD.

When Kosovan refugees needed a safe haven, Salford offered a helping hand. Just one among a host of helpers called in was housing worker Lynn Wallwork. Lynn supervises Ruthin Court at Salford Precinct, home still to more than 120 refugees.



KOSOVAN GIFTS FLOODED IN TO APPEAL OFFICE

HERE'S just a taste of the incredible generosity shown by local people to the Kosovan refugees. These are just some of the items donated to appeal lines set up by social services bosses once we knew refugees were on their way.

- 28 beds
- 20 carrier bags of food
- 62 packages of toys
- 27 packs of shoes
- 229 bags of clothing
- 27 chairs/settees
- 140 packages of towels and bedding
- 4 microwaves
- 2 cookers and a dishwasher

Vouchers and cash were also donated, along with services as diverse as shopping, befriending, driving and admin support. Explained community and social services committee chairman Councillor Peter Connor: *"The response to our appeals line was truly unbelievable. We had so many badly-needed items come in to our appeal - and all so quickly. I always knew Salford people had hearts of gold and here's more evidence."*



OPERATION WELCOME

I WAS HOUSING OFFICER for this block for about 10 years. We had just about finished moving tenants out ready for it to be put on the market when it was decided we could house some of the refugees here.

Joyce Barlow came and ran the operation for the first two weeks. Joyce had experience and formal training in running an emergency rest centre and was brought in to help although she had recently retired. Then I was brought back to keep things running.

'It's been exciting, because you just don't know what's going to happen next. There are so many people who have contributed - it really has been all hands to the pump at times.

'When the refugees first arrived we had to get them all signed up to tenancy agreements and for housing benefit - all with hardly a word of English!

'Thanks to the Refugee Council, we had eight interpreters here to help with the settling in.

'Organisations like the WRVS and the League of Jewish Women played a big part helping to get refreshments for everyone when they first got here. Then we allocated a 'mentor' to each family to help them get everything they needed.

'The response to the public appeal was wonderful. There was so little time to prepare,

but people gave so much, and it has all been so useful. Again, it all had to be sorted and divided up so everyone here had a chance to get a share.

'Everyone has mucked in. We had a joiner here earlier and I had him shifting and carrying, moving boxes around for us while we try to get everyone organised!

'Now the children are in school we are hoping to offer English lessons at Salford College for the adults, too.

'Staff are here throughout the day, to look after the block generally, and make sure the refugees have got someone to turn to if they need help. For example, we have an interpreter based here with us who accompanies them to the shops when they go for the first time, and who will help them with finding the people and places they need.

'We have set up medical sessions for the refugees with Dr Tankel's GP surgery, and with community health people, and now the children are into school and starting to settle into some kind of routine.

'We are just trying to make Ruthin Court a real home for these people for as long as they need to stay. The council are legally responsible for them while they are here, but at times like this everyone in Salford has a part to play.'

THANKS TO YOU

Leader spells out city's gratitude



CITY council leader Councillor Bill Hinds has stressed his gratitude for all the generosity, hard work and sacrifice that has helped Kosovan refugees settle in the city.

So many people - local people, volunteers, council staff, health and other workers, residents and many, many others - have made a contribution to caring for the unexpected visitors.

He said: *"I can't imagine what these people have been through. But I am deeply grateful for - not to say proud of - the tremendous effort that has been made here in Salford."*

"I want to say 'thank you', on behalf of the refugees, to everyone who has contributed in any way."

He added: *"The government has always been keen to stress military action was necessary to bring conflict in the Balkans to some kind of resolution. But without the contribution made by organisations like this local authority, working in partnership with local people, the effects of that conflict would have been 100 times worse."*

"All over the country it has been local authorities that have co-ordinated the massive effort to provide shelter for these refugees in their desperate plight."

MEHMET'S EXPERIENCE

INTERPRETER Mehmet Elezi knows only too well what Salford's refugees are going through.

Because he fled his home country for political asylum in the UK seven years ago.

A Kosovo Albanian himself, Mehmet is from the village of Shakovica near Podujevo, in the north of the province, near the border with Serbia.

He feared for his country even then, but knew only his sister, who fled with him, and didn't speak a word of English when he first arrived here.

He worked for a solicitor in London who specialises in immigration cases, before being asked to help by national organisation the Refugee Council as a result of the recent conflict.

He explained: *"When I take refugees to the dentist or the doctor now to translate for them, I am thinking that this is the same experience that I had myself."*

"It is very hard, to leave behind your home, your friends

and family and your country, very tough. But I know most of these people would go back as soon as they could."

"This is not my home country but people have been very sympathetic to me."

"And I know the people here are settled in now and are grateful that there are people who want to help them."



Xavier's pictures tell the story

EVERY day life in Salford is the subject for a unique body of work currently being produced by artist Xavier Pick.

He's already sketched people at work on Pendleton precinct, residents and passers-by, and has drawn refugees and their families, too.

Trained at the Royal College of Art, Xavier's brand of community art has taken him to places as diverse as war zones like Bosnia and an artist in residence post at Windsor Castle.

Now he's gearing up for a show at Salford Museum and Art Gallery later in the year.

He explained: *"Sometimes by just drawing someone, you are helping cement their sense of*

identity. Maybe this is particularly true for people like the refugees here in Salford."

"From the oldest to the youngest, they have all been interested in the work I am doing, and were delighted to have me draw their portraits."

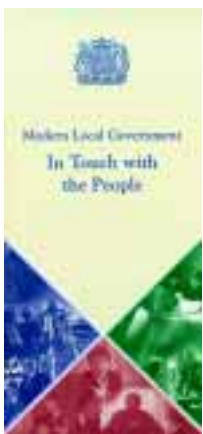
"It's just a great way to meet people, and bring positive aspects of their lives to the fore."



CLOSER TO THE PEOPLE

COUNCIL CHANGES

The government say councils like City of Salford must change the way they work. We must do more to tell people about what we are doing, and consult you more about changes that might affect you. The government say we must change our organisation so that more decisions are taken in local communities instead of at council committees. And they have ordered all councils to consider whether to have an elected mayor or a 'cabinet-style' set up - where a small group of top councillors are effectively in charge - like in Whitehall.



WITH a budget of £220 million and a staff of 12,000 providing services to 210,000 residents, Salford City Council is big business. Here's more news of how your council is changing.

THE local authority makes a real difference to so many aspects of people's lives.

From lollipop ladies to lottery funding for the magnificent new Lowry centre on Salford Quays, the city has a mission to 'to create the best possible quality of life for the people of Salford'.

Yet the way in which we make decisions has barely changed since councils were first created 150 years ago.

The government plans to change the law so that councils can modernise the way they work. Salford has developed a new system aimed at cutting red tape, making decision making faster and more transparent, and giving councillors the chance to spend more time representing the people who elect them.

We aim to trial the new system from October followed by major public consultation to see whether people think the new system works and whether they prefer it.

WHAT WILL CHANGE?

- Most committee meetings will go - saving time and money;
- Councillors will be freed to do more work on behalf of the people who elected them;
- Day-to-day decisions about services will be made by a Cabinet of councillors chosen by the council;

- A separate group of councillors will examine those decisions to ensure they offer the best quality services for the people of the city. There will be four scrutiny committees dealing with:

- Economic well being of the City;
- Social well being of the City;
- Environmental well being of the City;
- Quality and Performance of service delivery.

- For some key policy areas, the Council will create advisory/task groups following advice from the Cabinet. These groups can seek members from external organisations or partners to provide specialist knowledge and advice.
- A Standards Committee will provide advice and oversee implementation of a local code of conduct.



HOW WILL THAT BE OF BENEFIT TO ME?

The new system will be:
EFFICIENT: the cabinet can act swiftly, responsively and accurately to meet people's needs;
OPEN: it will be clear to people who is responsible for decisions;
ACCOUNTABLE: people will be able to measure the executive's actions against the policies on which it was elected.

WHAT WILL REMAIN THE SAME?

The full council meeting
 The council will still have 60 elected members and the regular meeting of all councillors - the 'full council' meeting - will remain the supreme decision making body for the city.
 However, it will become a policy making chamber where key issues and policies affecting the city will be discussed and agreed. At the moment it meets once a month, but may need to meet more often.

Local Community Committees
 Many other local authorities are following Salford's lead by creating community committees - something the city pioneered more than five years ago.

Community committees will be developed so that ward members can take local decisions in consultation with residents. Community committees will produce and co-ordinate local community action plans, a local area delegated budget, and will monitor delivery of local council services.

Regulatory Panels
 A small number of members' panels will meet the council's continuing semi-legal functions such as planning and licensing. These will meet in public so residents and other groups can make representations.



HOW WILL I KNOW WHAT IS HAPPENING?

Decisions taken by a member of the cabinet will be recorded and made public;
 Full council meetings will continue to be open to the public and there will be a regular half-hour Question Time;
 The council is also committed to the fullest public involvement in its decision making;
 In addition to the community committees, we will explore new ways of asking people what services they want and how they want them delivered.

PARTNER INVOLVEMENT
 The council recognises the need to continually work in partnership with a range of organisations for the benefit of the city. It has been successful in the development of a range of partnerships at the strategic and local level. It will continue to work closely with partners and develop new and existing partnerships. In certain cases, particularly in policy development, partners may be co-opted on to advisory/task groups and other bodies to develop multi-agency approaches.

For further information you can:

- contact your local ward councillor
- see the full prospectus on our website at www.salford.gov.uk
- or write to our freepost address for a copy of the prospectus:

Salford People,
 Freepost NWW1358
 Salford City Council
 M27 7BD

SEE THE CIVIC AND MEET THE MAYOR

GET a glimpse behind the scenes at YOUR city council by taking our guided tour of the civic centre.
 You can tread the city's corridors of power at the Chorley Road centre in Swinton, inspect the civic silver and check out the city's charter. You'll probably even get the chance to meet Mayor Councillor Bernard Pennington and the Mayoress in the comfort of their parlour.
 We can accommodate groups of up to 15 people.
 Just complete the coupon on this page, return it to our freepost address, and we'll get in touch to let you know when the next tour is available.



Name

Address

.....

.....

Tel no

Names of people interested in a tour

.....

.....

.....

Salford People,
 Freepost NWW1358
 Salford City Council
 M27 7BD

NEW ways of tackling CRIME

SALFORD is pioneering a three pronged approach to tackling crime within the city following the introduction of radical new legislation to help tackle the deep rooted issues facing communities across Britain.

Safer Salford has developed its Crime and Disorder Reduction Strategy following a detailed audit which analysed crime patterns across the City, identified specific problems and built a picture of which parts of the City are most badly affected by different types of crime.



The three key principles of the strategy are:

INTERVENTION (by focusing on young people, our communities and those who are the victims and witnesses of crime)

PREVENTION (by making our environment more resistant to crime and preventing further offending behaviour)

DETECTION (by targeting partnership action and resources at high volume crime and those persistent offenders committing it)

We will produce 11 local action plans for areas based on these three keystones to build proud and safe communities where people can live their lives

free from intimidation and discrimination.

The plans will be based around the six following themes:

Youth and Family Intervention - which aims to work with families children and schools in the community to prevent young people from becoming involved in crime;

Community Mobilisation - which aims to empower our communities to take action in partnership with us to help us to reduce crime;

Environmental Resistance - which aims to ensure that we continue to develop and adapt our environment so that it is more resistant to crime;

Intimidation, Witness and Victim Support - which aims to deal with intimidation and anti-social behaviour and support witnesses of crime and disorder victims of crime



Offender Rehabilitation Targeting High Volume Crime and Repeat Victimisation

In forthcoming issues of Salford People we will look at different ways of tackling crime and how local people can become involved. Our first is a profile of our groundbreaking witness support service.

For a copy of 'Building Safer Communities', Salford's Crime and Disorder Reduction Strategy 1999-2000, write to Salford People, Freepost NWW 1358, Swinton M27 7BD.



STAY SAFE in the SUN

THE sun is shining and slip off your shirt and catch a few rays.

Well, before you do, consider this... **FACT: In the UK each year there are 40,000 new cases and 2,000 deaths arising from skin cancer.**

For more information on how to protect you and your family, check out Watchdog's tips, below, or write to our Freepost address and we'll send you excellent leaflets produced by the Cancer Research Campaign.

Watchdog's tip The risk depends partly on your individual skin type and your lifestyle; **Treat** sunlight with caution. It's at its strongest 11am-3pm; **Expose** skin gradually whether on holiday, at home or at work watchdog's tip Trust me on this - use sunscreen



creams or lotions - preferably one which cuts out both UVA and UVB rays; watchdog's tip Carry out regular checks of your skin, using a mirror to look at your back. Get to know what your skin looks like normally.

The city council's environmental services people check how people feel about services they provide. The performance survey for October 1998-April 1999

- showed:
- 2,300 complaints and enquiries received;
 - 99 per cent of those responded to within three working days;
 - 90 per cent of customers who responded were either very satisfied or satisfied.

If you have any comments about services provided by the city council's environmental services directorate, please call us on 793 2022, or write to the Salford People Freepost address.

For more top tips, get the free Trading Standards Spotlight newsletter. Send your name and address to Salford People, **FREEPOST NWW 1358**, Swinton M27 7BD.

Watchdog tip

WITNESS SUPPORT SERVICE

UNIQUE in the United Kingdom the Witness Support Service support prosecution witnesses before, during and after court appearances at Crown, Magistrates and County Courts.

Support is aimed at tackling witness intimidation which can take many forms ranging from eye contact, threats/verbal abuse, graffiti, attacks on property, attacks on the person and/or their families etc.

Witnesses come to the service in a variety of ways often through referral by the

police and other agencies and support is tailored to an individual's needs - this can range from emotional support and physical security at home or work through to helping a witness move to another area in more extreme cases.

The Service began in September 1995 following the setting up of a safe, secure witness lounge at the Salford Magistrates Court This was in response to the growing problem of witness intimidation reinforced by a culture of fear in communities.



Questions & Answers

LOCAL people quizzed city bosses at a special question and answer session organised as part of Salford's Tenants Board Meeting, during June.

City council chief executive John Willis, Police Supt Peter Morris and Safer Salford manager Ann Weir answered questions put by residents on the Crime and Disorder Act.

Q Will the Crime and Disorder Act address problems in Salford?

A The panel believe this is the best chance we have to solve the kind of problems Salford faces. The government has not got unlimited funds and is asking local authorities and their key partners like the Police, Probation Service and others to work more closely. Some powers will not happen instantly, but this is a good way forward.

Q Is there a map in existence which identifies the city's problem areas?

Yes. Information has been gathered from a wide range of sources and fed into a database. Problems will be easier to trace, and resources better focused on those areas that need them. This is why it is important that all criminal incidents are reported to the Police, so our data is accurate and up to date.

Q What is 'anti social behaviour'?

There is a formal definition in the legislation, but it is any behaviour which causes harassment, alarm of distress to one or more people.

Q How can an anti social behaviour order be used to protect local people?

A The court will impose conditions if and when an order is issued, such as curfews, restrictions on movement. The minimum time this can apply is two years. If the offender breaches the order they can be immediately arrested and put before the court. Breach of an anti social behaviour order can result in a prison term of up to five years.

Q Will powers be used immediately, or only as a last resort?

A The guidance states we have to show we have tried every other alternative. We need to look at the cause of the problem, not just the effect.

Q Why is there no enforcement against truancy?

A The national average for truancy is 1.1 per cent. Salford's average is 1.2 per cent. The real problem is that too many absences are condoned by parents or guardians. There is a significant risk that truancy and exclusion will result in children going into crime.

Q How will the order improve issues such as car crime and damage to property by juveniles?

A There will be a fast-tracking system to get offenders through the court system more quickly.

Q Who will implement parenting orders?

A Support will be given by the Young Offender Team. Parents will have to attend counselling or be fined £1,000 if they refuse.

Q What can we do as a residents' association?

A Report incidents in the normal way to the Police. If you feel it is an anti social behaviour issue, report it also to your local housing office. Strengthen links among yourselves by involving more residents in your association, and by improving links with other tenants/ residents groups. Consider starting a Homewatch group.

The city council is responsible for monitoring progress made on implementing the crime and disorder reduction strategy. Next year's tenants' board will have a similar session to examine the city's performance in implementing the Act.

ONE of the best...

SALFORD City Council has been ranked as the third best local authority in the Country when judged on our performance on tenant participation in council housing. We would like to thank all our tenants who have helped us to achieve our high placing and have been involved in the many activities that have taken place around the City.

SHOWING INITIATIVE

Our tenants have been telling other people about the work they have been doing. Tenants from the Precinct, Swinton, Broughton and Little Hulton told delegates from other parts of the Country about their many achievements at a

one-day conference earlier this year. We then took the delegates on visits to various projects that have been set up by tenants.

LOCAL DECISION MAKING

Tenants and residents have the opportunity to make local decisions, including spending local budgets, at Area Housing Sub Committees. The Committees also monitor the performance of the local housing service. If you would like to get involved in your Area Housing Sub Committee contact Marilyn Thornley for details on 0161 925 1287.

Irlam and Cadishead tenants groups have now launched a tool library to help local council tenants maintain their gardens, by providing a service to hire out garden tools and equipment. The local Area Housing Sub Committee funded the project.

GETTING READY FOR BEST VALUE

Housing Services recently organised a survey on our council housing repairs service as the first stage in our preparation for Best Value, the Government's new provisions for reviewing the performance of all Councils. Our survey attempted to contact 2,500 tenants and provided invaluable information on areas that we can improve. This was supplemented with 3 customer panels looking at the information gathered in the survey, to further identify better ways of delivering the service.

TENANT CONTROL

There are 3 tenant management co-operatives managing Council housing in the City. Apple Tree Court Tenant Management Co-op has received national recognition for their projects, including their perma-culture garden and community café.

COMMUNITY SPIRIT

Local tenants associations have organised a variety of fun days and festivals throughout the City, involving and entertaining local people. They are made possible by the hard work of local activists.

Residents at growing numbers of our sheltered housing schemes are also involved in group activities, including social activities and exercise groups like Healthy Hips and Hearts.

WORKING WITH CHILDREN

In Ordsall housing staff have been visiting schools to talk about how local children can help keep estates clean, what the affects of vandalism are and who pays to clear up litter and graffiti.



TEAM WORK

Housing Services has a team of dedicated Tenant Participation staff to involve council tenants and help tenants' groups. If you would like to know if there is a tenants' association in your area or would like to set one up please contact Marilyn Thornley, Principal Officer Tenant Participation on 0161 925 1287.

CONSULTING YOU

We have started surveying Little Hulton tenants about how they want to be involved in the Council's housing services in the future. We are then going to use those ideas and views to organise a series of open days in all our area housing offices to ask tenants what housing issues they want to discuss with us and how they want to get involved. We will then be drawing up a Tenants Compact, which will spell out the details of an agreement on tenant involvement.

We cover both council and private sector housing in our Housing Strategy, which is a document that publishes our future plans. Earlier this year we introduced a Housing Strategy Panel composed of members of the public, business representatives and people from a variety of organisations working in Salford to discuss our plans.

If you would like to join the Housing Strategy Panel and take part in a series of questionnaires please call Sue Hill on 0161 925 1160.



football crazy...

LOCAL tenants in the Precinct area of the City organised a football tournament for local children in June. The Low Rise Action Group organised the competition and after the success of last year's event had a tournament for both under 12 year olds and under 15 year olds. Everyone who took part received a medal but Amersham Street (under 15s) and Brydon Close (under 12s) won the trophies. These winning teams are pictured below. The day ended with a housing staff against tenants game, which staff won 7-6.

"This is a great idea, giving all the kids in the area a chance to be involved. The Council supported the tournament and we even fielded a team of our own in a fun game," said John Oakley, Area Housing Manager.



NEIGHBOUR MAKE GOOD FRIENDS

JOYCE Scholes won the Council's Best Neighbour competition, which was awarded during National Housing Week. The competition is run by Housing Services to celebrate the many unsung heroes of local communities and to give Council tenants an opportunity to praise their neighbours.

Joyce was given the award for her many activities which include helping out with running bingo at Hornbeam Court where she lives, organising day trips and throwing birthday parties for neighbours in the block of flats.

In a marvellous double, Joyce's group, Hornbeam Court Tenants' Association scooped the Council's Tenants Group Achievement Award. Both awards were announced in June. Joyce won a slap up meal for two and the tenants' association was rewarded with £100 for new equipment.

"Hornbeam Court Tenants Group is celebrating its 10th anniversary, so it was felt fitting to honour their achievements this year. The group organises many outings and social events and has raised money to kit out its community rooms and launderette. The activities of tenants' associations are very important around the City. They help us to consult with local people as well as organising events that strengthen community spirit. We chose to honour Joyce individually because of her unflagging efforts both within her own block of flats and her local area" said Councillor David Lancaster, Chairman of Salford's Housing Committee.

The runner up in the Best Neighbour competition was John Shawcross of Brookhouse in the Eccles area. A tenants group commendation was given to Agecroft Residents' Association for their excellent fundraising efforts since being formed last year.



Hayley Chapman and Roxann Robinson with their animal face masks made out of leaves.

WOODLAND WALK

THE opening of a new community wood in Irlam was celebrated in June. Artist Lesley Martin helped local children make masks and musical instruments for a procession in Nursery Wood, which is located on Merlin Road in Irlam.

The opening was organised by Irlam and Cadishead Accord. Local people helped with the work.

Salford City Council provided the land; U.K. Waste and the Forestry Authority provided the funding and Red Rose Forestry provided practical help.

Joyce Scholes received her Best Neighbour award from Councillor David Lancaster and the Right Worshipful Mayor of Salford Councillor Bernard Pennington.



HOUSING WEEK ROUND UP

In June Council tenants and housing staff organised a number of activities for National Housing Week. The week which takes place in early June each year celebrates the importance of housing and communities within Salford.

ALMA (The Ascension, Lower Broughton Road and Mocha Parade Association) organised a weekend of litter picks and clean ups. The young people who took part were rewarded with a children's disco at the Den on Ascension Road.



Canon Green Court tenants in Blackfriars celebrated the opening of their new community room with the Right Worshipful Mayor of Salford Councillor Bernard Pennington.

Irlam residents took part in a fun day organised at the Area Housing Office on Astley Road. The free entertainment included a magician, barbecue, treasure hunt, stalls and games. A giant jigsaw puzzle of a house kept children baffled and amused. After dreadful weather before the day everyone was very relieved that the day stayed dry.



Bury New Road Tenants' Association brought National Housing Week into the electronic age going live with its own web site. You can view the site by surfing into www.burynewroad.org.UK

Older residents of Little Hulton enjoyed the opening of a new garden at Pennington Close sheltered housing scheme. The garden was built on a derelict site and was funded by money allocated by the Area Housing Sub-Committee. A real community effort, residents helped out in the planting and the painting of benches.



tenants HAVE A SAY

THE Annual Tenants Board conference in June, gave council tenants representatives an opportunity to hear about the activities of other tenants groups in the City in a successful series of workshops on Tenant Initiatives. Representatives then got a chance to hear about new lottery funding ideas from Toby Sanders, the Council's Lotteries Officer.

The afternoon's session on the new Crime and Disorder Act gave tenants time to ask John Willis, the Council's Chief Executive, Ann Weir from Safer Salford and Superintendent Peter Morris from the Police, questions on how the new Act will be used to attack crime in the City.

The final session of the day was workshops organised so that the Council's housing staff could listen to tenants views on how we can market council homes better to new tenants and what should go into a housing services customer charter.



OLDER PEOPLES CONSUMER CHOICE PANEL

ARE you interested in the housing services provided for older people in the City? Would you like to help us look at the choices available for improving older people's services?

If the answers are yes, you may be interested in a group we are bringing together to examine: how we can market

sheltered housing schemes better and what equipment we can use to suit older people's needs.

You may be an older person yourself, or a relative or a friend of a person needing our services.

We would be looking to arrange our first meeting in early August 1999. We will

re-imburse the personal expenses of volunteers who take part, such as travel or crèche/dependent relative payments.

If you are interested in taking part in the Panel please contact Marilyn Thornley, Principal Officer Tenant Participation on 0161 925 1287 for further details.

HOUSING BRIEFING



IN the first of a series of occasional articles we bring you up to date with current issues affecting Housing. This article concentrates on the recently published government review of Housing in the North West of England.

HOUSING IN THE NORTH WEST

The North West of England is one of the largest government regions in the United Kingdom and has the second largest population. There are 2.9 million homes in the North-West of which just over three-quarters are privately owned. Each year the government produces a pack of information known as the "Regional Housing Overview". This gives councils, like Salford, the opportunity to look at how they are performing against the rest of the North West.

Salford's high number of flats is unique with most of the region having a large proportion of houses and relatively few flats. However, Salford is similar to the rest of the North West in having a large number of terraced houses. The regional housing overview recognises, as we have found out

in Salford, that older terraced housing is in some areas becoming very unpopular.

In Salford over a third of the City's housing was built before 1919 and there are particular problems with older terraced housing in some areas. Throughout the North West, many older terraced properties are being sold off cheaply and the Government has recognised that this has caused problems for individual owner occupiers and the housing market generally. Some local people, however, like living in terraced housing and in parts of the City this type of housing is still very popular.

The Government's report points out that generally as well as stock getting older that there are problems with unfit. The number of properties assessed as being unfit in the North West is higher than the national average. Unfortunately spending generally



by local authorities on the renovation of private housing has declined over the past 15 years. Salford is building up a picture of the size of the problem. We will carry out a stock condition survey of privately owned homes this year.

Salford has seen a considerable increase in the number of council dwellings it finds difficult to let. This is an issue that is common across the North West. Salford is working hard with a wide range of

innovative methods being used to help to improve the image of council housing.

Here in Salford we believe solutions to housing problems in the North West cannot be found without working closely with planners, health workers, teachers and social workers. Jobs and Transport are just as important and projects and plans for the revitalisation of whole areas, not just Housing, are needed if we are to improve matters.

KEY FACTS AND FIGURES

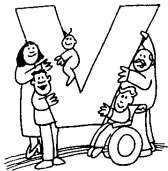
The Government's report provides a lot of information about Salford in comparison with the rest of the North West. Here are some of the key facts and figures:

- Salford is one of the most populated areas of the region with 2,368 persons per square kilometre. Only Manchester, Liverpool and Blackpool are higher.
- Population has fallen in Manchester, Salford and Merseyside between 1991 and 1997. Areas like Eden in Cumbria and Crewe in Cheshire had significant increases.
- Liverpool and Salford have the hardest to let properties with, Rochdale and Allerdale (in Cumbria) following close behind. The most popular areas are in the Ribble Valley, Vale Royal and Congleton, Blackpool and Wyre, and Eden.
- On average a terraced house in Macclesfield will cost you £65,000 and in Salford £29,500. Overall if you were buying any type of house the highest prices are in Macclesfield and the lowest are in Hyndburn. Salford's are the second lowest in the North West.



VOLUNTARY SECTOR

A Salford People service to help put you in touch with voluntary groups across the city



We can help!

If you're a voluntary group in Salford, we can help! Voluntary Sector is a free service for voluntary organisations. If you need volunteers, or just want let people know you're here, send details to our freepost address below, and we'll try to help. Salford Council for Voluntary Service provide a bi-monthly newsletter for voluntary and community groups, information on funding, training, health and community care, and a volunteer bureau. Contact them at:

**12 Irwell Place, Eccles M30
OFN Salford CVS: 787 7795
Salford Volunteer Bureau:
707 7067**

St Ambrose Young Families

...need volunteers to help run activities with parents eg toddler groups, toy library, craft activities, refreshments, fund-raising and publicity, plus many other areas of work.

British Red Cross

...are looking for volunteers to provide services to vulnerable people across Greater Manchester. If you could spare a few hours each week, we will provide you with training and expenses.

Lifeshare

...are a charity working with homeless people, looking for volunteers to help raise funds. Volunteers meet monthly to share ideas and organise events. Training is given.

Manchester Jewish Community Care

... are looking for volunteers to help out at the Nicky Alliance

Day Centre on the reception desk, to act as befrienders, offer refreshments, retail shop, act as drivers and escorts, provide administration support and meals on wheels.

Prince's Trust Volunteers

...need volunteers to help provide personal development courses for 16-25 year olds. Courses consist of induction, team building, residential training, environmental and community projects, placements and a presentation offering NVQs key skills and City and Guilds profile of achievement. If you would like to volunteer for these or other voluntary or community groups working in your area, contact Salford Volunteer Bureau on 0161 707 7067, Minicom 0161 789 7992, or visit or write to 12 Irwell Place, Eccles, M30 OFN, or contact us using the Salford People Freepost address.

COMMUNITY COMMITTEES JULY/AUGUST

27 July	Eccles/Swinton Eccles Library	7pm
27 July	Langworthy/Pendleton Tech Train, Churchill Way	6pm
2 Aug	Higher Kersal Aguda Centre, Northumberland Street	7.30pm
3 Aug	Claremont/Weaste Hope High School	7pm
24 Aug	Swinton Civic Centre, Chorley Road	7pm
24 Aug	Langworthy/Pendleton Tech Train, Churchill Way	6pm
24 Aug	Ordsall Collingburn Court	7pm



SALFORD

4 Trafford Rd, off Broadway,
Ordsall 848 8865 Minicom: 877 6616

PENDLETON

Pendleton House, Broughton Rd 736 4983
SWINTON AND PENDLETON

95 Chorley Rd 794 5028

WORSLEY

1 Memorial Rd, Walkden 790 5489

ECCLES

40/44 Church St, M30 0DF 789 1540
Eccles Home Visiting Scheme 789 4467

HOPE HOSPITAL

Stott Lane, Salford M6 8HD 787 4713

IRLAM AND CADISHEAD

595 Liverpool Rd 775 1849

Irlam and Cadishead Home Visiting Scheme 777 8080

LOWER BROUGHTON

Lucy St, off Great Clowes St 792 1609



Customer Service Academy

A brand new training facility has arrived in Salford.

The Customer Service Academy is a new and exciting initiative which will provide opportunities for organisations who wish to develop the skills of their staff and links to initiatives such as IIP and Lifelong Learning.

In particular we are looking to work with organisations involved in community/voluntary work who wish to develop and enhance existing skills by obtaining NVQ qualifications. As this is such an

important area of development we are extending the programme to include employers, so subsidised rates may be available.

A modern relaxed environment, equipped with our excellent IT facilities and based in Pendleton, is at your disposal for use during this course, although most work will be done in the workplace.

**For more details,
call Tech Train on
743 9323.**

THANKS to you we had well over 600 responses to our first edition.

Around 300 Salford people have requested a guided tour of The Lowry.

So far 90 readers have actually had the chance to look around the building, due to open in April next year, but everyone should at least have been offered a date for a tour by now.

Winner of our Earth Centre family day out draw is Michael Kelly of Harthill Drive, Seedley. He'll get that day out thanks to government agency Going for Green.

600 responses

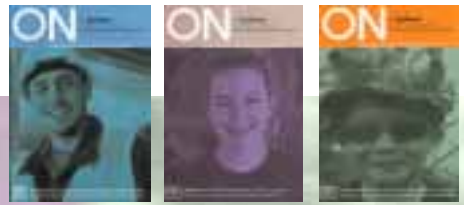


USEFUL LIST OF COUNCIL SERVICES

- A**
- Adult disability social services team (learning, physical disabilities and sensory impairment) **799 0888**
 - Adult education: Advice SETAS **745 7233**
 - Allotments **736 1749**
 - Archives **775 6543**
 - Arts and Leisure HQ **736 9448**
 - Alcohol team **745 7227**
- B**
- Belmont Homeless Persons' Hostel **792 2040**
 - Benefits: Owner occupier/private tenant **793 3399**; Council tenants contact area housing office.
 - Births: See registration
 - Blocked gullies **793 2477**
 - Broughton Pool **792 2847**
 - Building regulations **793 3685**
 - Buile Hill Park **737 6277**
 - Business advice **793 2803**
- C**
- Car parks **793 3841**
 - Cemeteries and crematoria Agecroft/Waste **736 2512**; Peel/Green/Swinton **789 1901**
 - Children disability social work team (learning, physical disabilities and sensory impairment) **707 0222**
 - Cleavley athletics track **787 7107**
 - Community alcohol team **745 7227**
 - Community & social services information line **793 2222**
 - Community drug advisory service **793 2379**
 - King Street day centre **787 7343**; Salford **745 7222**;
 - Young Person's worker **707 7188**.
 - Community strategy **793 2569**
 - Competitive services **793 2560**
 - Compulsory purchase **793 3100**
 - Committee services **793 3003**
 - Consumer advice **793 2022**
 - Council house sales (admin) **793 3096**
 - Council house sales (Housing) **737 0551 x1240**
 - Council tax **793 2699**
 - Councillors' secretarial assistant **793 3059**
 - Cycling **793 3849**
- D**
- Deaths - See registration
 - Debt advice: **727 8222**, Mon, Wed, Fri, 1pm-4pm
 - Dog wardens **925 1099**
 - Drains in private properties **925 1099**
 - Drains outside private properties **793 3812**: drains outside council housing, call local area housing office.
- E**
- Economic Development **793 2929**
 - Education:
 - Assistance with school uniforms/ footwear/free school meals/welfare benefits **743 0744**
 - Emergency: Out of hours **794 8888**. All calls are recorded and all are held on a queuing system, please wait.
 - Education:
 - Assistance with school uniforms/ footwear/free school meals/welfare benefits **743 0744**
 - Emergency: Out of hours **794 8888**. All calls are recorded and all are held on a queuing system, please wait.
 - Environmental & consumer services: General enquiries **793 2010/3**; West: Cadishead, Irlam, Eccles, Little Hulton, Boothstown, Swinton, Worsley and Walkden **793 2068/2054**; East: Claremont, Langworthy, Weaste, Pendleton, Ordsall, Broughton, Kersal, Blackfriars **793 2112/2113/2046**.
 - European issues **793 3014**
- H**
- Hackney carriage licensing **793 3114/5**
 - HIV/AIDS **743 1000**
 - Hospital social work teams:
 - Hope **787 4820**;
 - Ladywell **787 4062**;
 - Children's hospital **727 2355**
 - Houses in multiple occupation **925 1157**
 - Housing Advice Centre **787 8480**
 - Housing offices:
 - Blackfriars, **832 2212**;
 - Eccles, **789 7721**;
 - Irlam, **775 2626**;
 - Little Hulton, **703 9453**;
 - Ordsall, **872 4563**;
 - Pendleton, **736 8931**;
 - Precinct, **745 7745**;
 - Swinton, **794 4711**;
 - Worsley, **790 4568**.
 - Houses in multiple occupation **793 2053**
- I**
- Infectious diseases **793 2010**
 - Information centres - Broadwalk **745 9529**; Irlam **776 0280**. Irlam Pool **775 4134**
- J**
- Job applications - personnel dept **793 3507**
- L**
- Lancastrian Halls **794 7466**
 - Land charges **793 3124**
 - Libraries:
 - Boothstown, **799 6549**;
 - Broadwalk, **737 5802**;
 - Broughton, **792 6640**;
 - Cadishead, **775 3457**;
 - Charlestown, **736 1936**;
 - Clifton, **794 1591**;
 - Eccles, **789 1430/7731**;
 - Height, **736 1907**;
 - Hope, **789 2896**;
 - Irlam, **775 3566**;
 - Little Hulton, **790 4201**;
 - Local History Library, **736 2649**;
- M**
- Main sewer faults **793 3809**
 - Markets:
 - Eccles **789 3936**;
 - Pendlebury **793 7654**;
 - Salford **736 7845**.
 - Marriages: See registration
 - Mayoralty **793 3064**
 - Mental Health - Prestwich Hospital social work team **773 9121**
 - Mobile Warden Service **737 0551 Ext 1008**
 - Museums:
 - Lancashire Mining Museum **736 1832**;
 - Ordsall Hall **872 0251**;
 - Salford Museum and Art Gallery **736 2649**.
- N**
- North Salford School of Excellence **792 5969**
- O**
- Occupational therapy **789 0892**
 - Ordsall Project **876 5216**
- P**
- Pedestrian crossing and traffic signal faults **793 3842**
 - Parking problems **793 3843**
 - Peel Green/Swinton cemeteries and crematoria **789 1901**
 - Pembroke Halls **793 2435**
 - Pest Control **925 1099**
 - Planning enquiries **793 3684/6**
 - Promotions/tourism **736 9448**
 - Public relations and press office **793 3157**
 - Pot holes/highways defects:
 - Salford South **793 2476**;
 - Walkden/Worsley **793 3881**;
 - Swinton **793 3884**;
 - Salford North **793 3878**.
- Q**
- Quays Project Office **848 8601**
 - Quays Heritage Centre **876 5359**
- R**
- Recreation centres:
 - Albert Park astroturf, **792 6076**;
 - Broughton, **792 2375**;
 - Cadishead, **775 7928**;
 - Clarendon, **736 1494**;
 - Eccles, **787 7107**;
 - North Salford Centre of Excellence, **792 5969**;
 - Ordsall, **848 0646**;
 - Pendlebury, **793 1750**;
 - Walkden, **799 4585/790 2084**.
 - Refuse Collection **925 1099**
 - Registration of Births/ Deaths/Marriages **793 0077**
- S**
- Road marking and signs **793 3884**
 - Road safety and school crossings **793 3807**
- S**
- Salford City Council Information Centre **745 9529**
 - Salford Museum and Art Gallery **736 2649**
 - Salford Pride litter teams **925 1099**
 - School admissions (education dept) **837 1736**
 - Sewer problems **793 3809**
 - Social Services: General enquiries **793 2240/41**;
 - Social & Health Care Information **793 2222**.
 - Social Services community teams:
 - Broughton, **831 7484**;
 - Claremont/Waste **789 5234**;
 - Eccles **707 0704**;
 - Irlam, **775 2626**;
 - Worsley **799 4404**;
 - Pendleton/ Precinct **743 1000**;
 - Swinton, **793 2399**;
 - Special Services Section (Libraries) **792 0190**
 - Sports development **736 9448**
 - Street cleansing **925 1099**
 - Street lighting faults **793 3871**
 - Student grants and awards (education dept) **837 1722**
- T**
- Tourism **793 3403**
 - Town twinning **793 3139**
 - Trading standards **793 2022**
 - Traffic management **793 3840**
- V**
- Viewpoint Gallery/Artbase **775 6543**
 - Voluntary sector (grants) **793 3416**
- W**
- Water Sports Centre **877 7252**
 - Welfare rights & debt advice **727 8235**
 - Welfare rights advice **728 2418**, Mon, Tue, Thur, Fri, 10am-noon
 - Work permits for children **743 0744**
 - Worsley Court House **790 4584**
 - Worsley Pool **790 2084**



SWITCHBOARD (0161) 794 4711



Get ON

in Salford this summer

EACH issue features more than 100 entries - from exhibitions, talks and historic walks to music, dance, drama, sporting activities, great days out and community events - most of which are absolutely free.

The bumper July/August issue is out now and it's packed with arts and sports events to keep kids amused throughout the school holidays.

Check out Eye Openers at Salford Museums or Go Wild and join the Reading Safari at Salford Libraries!

Kids can also try Speedy Sports in Buile Hill Park, Sport 'n' Splash at Fit City Centres or Summer Sports at Playspaces across Salford.

Meanwhile, the Summer of Sport will keep sporty youngsters on the ball with one week courses in abseiling, canoeing, gymnastics, orienteering, rock climbing, roller hockey, sailing, trampolining, windsurfing and much more.

And don't miss fast-paced arts and sports action in the Action Stations marquee, which will be pitching camp at many of this summer's festivals.

ON in Salford is a free, bi-monthly what's on magazine that's bursting with exciting events

So, to discover what's on in Salford, get ON in Salford.

To receive your free copy, telephone Andrew Roach on 0161 736 9448 today, or complete the coupon below, pop it in an envelope and return it to the FREEPOST address. You don't even need a stamp.



CALLING ALL community groups in Salford - why not publicise your event on ON's community page? Telephone Andrew Roach on 0161 736 9448 and ask for a community page listings form. The deadline for the November/December issue is September 6, so don't delay.

Yes, I would like to join the free ON in Salford mailing list.

Title First Name

Surname

Street

Town

City Postcode

Telephone

I am particularly interested in (tick all that apply):

Family Events	<input type="checkbox"/>	Exhibitions	<input type="checkbox"/>	Other (please specify)
Artbase	<input type="checkbox"/>	Theatre	<input type="checkbox"/>
Children's Activities	<input type="checkbox"/>	Sports	<input type="checkbox"/>
Tea Dances	<input type="checkbox"/>	Cabaret Evenings	<input type="checkbox"/>
Walks	<input type="checkbox"/>	Talks	<input type="checkbox"/>
Classical Music	<input type="checkbox"/>	Heritage	<input type="checkbox"/>

Age: Under 18 18-24

25-29 30-40 41-49

50-64 65+

Return to: Andrew Roach
 FREEPOST MR10203
 Marketing & Visitor Services,
 Salford Education & Leisure Directorate,
 Vulcan House, Albion Place,
 SALFORD. M5 9DZ