

Your LifeTimes Link

sharing Salford's fantastic story



Father Time and The Spirit of Salford, with attendants

Do you remember the Salford Pageant?

Were you one of the thousands of people who took part in the Salford Historical Pageant in 1930? We're celebrating the 70th anniversary of this amazing community event with a drop in afternoon at Broadwalk Library Community Room on Monday 18 September from 1.30pm to 4.00pm.

The pageant, which commemorated the 700th anniversary of the granting of the city charter, was held at Buile Hill Park from 30 June to 5 July 1930. So if you took part, or were in the audience, or just want to learn more about the event, come along and watch the video of the cine film taken at the time, look at some of the photographs

from our archive or reminisce over a cup of tea.

If you have any photographs, memorabilia, or just happy memories of the pageant, bring them along and share them with us. The event is free and there's no need to book – just drop in. For more details phone the **LifeTimes** office.

A right royal do

The Pilkington Royal Lancastrian Roadshow saw a fantastic turn out with more than 450 people flocking to Swinton Library from 8 to 10 June. Many pieces of pottery were brought

in and identified by Barry and Angela Corbett from the Lancastrian Pottery Society (www.pilkpotsoc.freeserve.co.uk), ably assisted by Elsie Mullineux and Lawrence Burton.

Former Pilkington's workers bumped into people they had worked with years ago, photographs were brought in, reminiscences were shared, and a good time was had by all. Several people wanted their memories preserving and **LifeTimes** staff will be contacting them to arrange recording dates later in the year.

We've already spoken to one former Pilkington's employee who told us about the social life: *Before the war there was always the freedo, as it was called, and that was the Christmas party in the canteen. We had the canteen and the recreation room, which was a maple floor, and it was always sanded and re-polished every year for the works party. That's when all the directors came down in force, and that was known as the freedo.*

And did that continue after the war?

Oh yes! A good local dance band. And for people who didn't want dancing there was whist drives and dominoes.

Was this just for employees and their families?

No! Just employees. You'd be surprised what went on - but the least said about that the better! I'll leave that to your imagination. Let's just say there were some friendships made...



Angela examines a large pot brought by Mr and Mrs Evans

Wish you were here..?



Our third **LifeTimes** workshop in June on the theme of homes and housing was, as usual, very lively and time ran out very quickly! The enthusiasm was amazing and all of the ideas offered have been noted. After lunch, several workshop-goers stayed for a guided tour of the museum's temporary exhibition, Ryhope Walk.

The tour was given by the Wheeler family - Mary, Madeline, Daniel and Liam - who were involved in making the exhibition with artist Jen Southern. As areas of Salford were identified in the displays, there was much discussion and reminiscing. Thanks to everyone

who attended the workshop and to the Wheeler family for making the day a success and very enjoyable.

Bryan Rhodes e-mailed us to say the topic of house and home reminded him of the days when they had to rub Fairy soap onto the dishcloth to get greasy pots clean, and sorting the coal after it was delivered into separate piles - cobs, nutty-slack and eggs!

It's holiday time!

If you remember going to Butlins or Blackpool, or trips to Belle Vue or Heaton Park, bring along your old holiday snaps, postcards and memories for a great morning out at the next **LifeTimes** workshop.

Taking holidays as the theme, the workshop is planned for **Saturday 9 September at Salford Museum and Art Gallery, from 10.00am to around 12.00 noon.** We'll look at the theme of holidays in detail - including festivals, such as May Day, Christmas and Whit Walks, as well as summer holidays, Wakes Week and day trips, and then see how these ideas can be presented as part of the new museum displays. Coffee will also be available after the workshop for those of you who want to carry on reminiscing!

Enjoying a paddle at Parr Fold Park

We played here all day in summer. We had picnics with water and bread and jam. There were bushes at one side where it was a common sight to see children's clothing drying. (Mrs J Brown-Pendlebury)

To book your holiday workshop place, call Salford Museum and Art Gallery on 0161 736 2649 by Thursday 7 September.

Cash for new LifeTimes project

Salford Museum and Art Gallery and Salford Foyer have received funding from the DfEE (Department for Education and Employment) for a new **LifeTimes**-based initiative.

The project, one of only three in the country and the only

one to focus on young people, aims to encourage youngsters to get actively involved in their local museum, breaking down barriers and changing attitudes to learning, museums and to young people.

The Foyer provides independent living opportunities for young people who are homeless, or in need of housing, and supports their education, employment and training plans.

As well as undertaking research and identifying strategies to make museums and galleries more accessible and attractive to young people, Salford Foyer residents will be contributing contemporary material and experiences to **LifeTimes**.

Salford's architectural gems uncovered

Some of Salford's historic buildings are throwing open their doors to the public for the Heritage Open Week end on Saturday 16 and Sunday 17 September.

Ten sites in Salford are taking part in this annual, national event, organised by the Civic Trust. The weekend aims to encourage public access to historic buildings and sites that are not usually open to general visitors.

Each venue will be offering a range of events, such as guided tours and additional historical information about the building and people or events associated with it.

The participating venues are:

Worsley Methodist Church

Barton Road, Worsley, M28.

Contact Paul Hassell on

0161 790 5164

St. Luke's Church

Liverpool Street, Weaste, Salford.

Contact Rev. Keith Archer on

0161 737 7934

St. Andrew's Church

Chadwick Road, Eccles.

Contact Mrs Lowe on

0161 707 1742

St. Philip's Church

St. Philip's Place, Chapel Street, Salford.

Contact Rev. Holley on

0161 834 2041

St. Augustine's Church

380 Bolton Road, Pendlebury, Salford, M27.

Contact Father Roger Parker on

0161 794 2962

St. Peter's Church

Chorley Road, Swinton, M27.

Contact Father Roger Parker on

0161 727 8175

All Saints Church

Charles Street, Chorley Road, Wardley, Swinton, M27.

Contact Father Tony Davis on

0161 794 5934

Salford Museum and Art Gallery

Peel Park, The Crescent, Salford, M5 3XX.

Contact Claire Watts on

0161 736 2649

Ordsall Hall Museum

Ordsall Lane, Ordsall, Salford, M5 3EX.

Contact Chris Britain on

0161 872 0251

Working Class Movement Library

51 The Crescent, Salford, M5 4WX.

Contact Alain Kahan on

0161 736 3601

Open Saturday and Sunday:
1.00pm - 5.00pm

To find out more, contact the venue direct, or see the September/October issue of ON in Salford magazine. (To join the free ON in Salford mailing list, phone Alex King on 0161 736 9448, or e-mail gavin.burns@salford.gov.uk with your full name and address, including your post code.)

What's on at Salford museums this autumn..?

Recall Walls

Bring in your own memories to add to our Recall Walls at Salford Museum and Ordsall Hall. Help to fill the walls with photographs, written accounts or thoughts from the 1940s through to the present day. Or stir your little grey cells and answer the questions on our cue cards, adding to the bank of memories for **LifeTimes**. So come along, spare a thought and create something to remember!

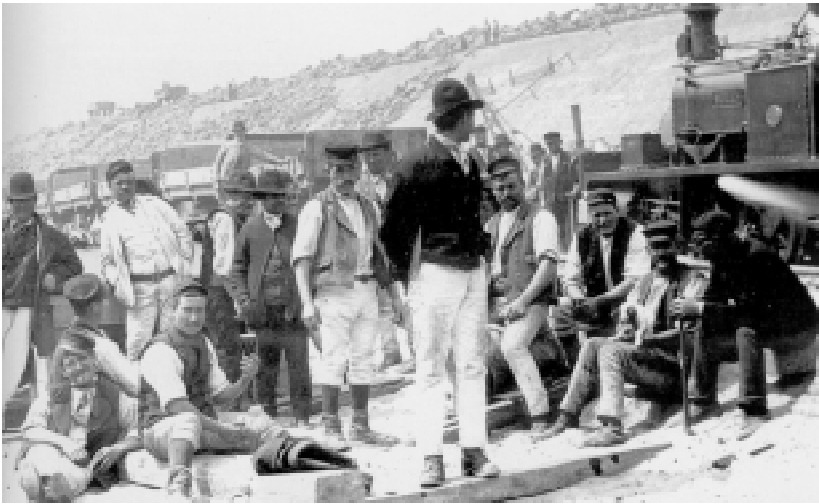
Recall Walls at Salford Museum and Art Gallery, Peel Park, Crescent, Salford M5 and Ordsall Hall Museum, Ordsall Lane, Ordsall, Salford M5 until 3 September.

The Borrowers

Discover 150 years of the weird and wonderful at Salford Museum and Art Gallery. All kinds of amazing objects have suddenly appeared. Come and see the first Lowry ever bought by the museum, or marvel at the return of the wonderful Buddha which used to sit at the top of the museum staircase. Step into a life-size photo album of the museum or celebrate the development of **LifeTimes**. A specially created activity zone and activity book for families accompanies this exhibition.

Salford Museum and Art Gallery, Peel Park, Crescent, Salford M5. 25 August to 4 December

To find out more about the Recall Walls or The Borrowers, call 0161 736 2649.



Building the Ship Canal

Do you know anything about the Irish immigrants who worked on the Manchester Ship Canal towards the end of the 19th century?

Diane Lee, based at Salford's Tourism Unit on Salford Quays, is looking for more information about the immigrants, as part of the BBC History 2000 project.

Many years ago, a 90-year-old former-navvy named Charlie Williams was interviewed and he remembered the Irish workers. "We had hundreds of Irishmen on the canal, hard working and all. They had to work or get out. They weren't like our people, you'd never hear them swear in a blue moon; good, hard working lads. I was fating

[greasing wagon wheels] for a gang that had about seven Irishmen out of ten because they'd work harder than the Englishmen. It was a happy life from one end of the canal to the other."

Diane says: "With your help we hope to trace the origins of some of these immigrants who worked on the construction of the canal between Eastham and Pamona from 1887 to 1893. I want to pinpoint their places of birth on a large-scale map of Ireland. All the information received will be made available to visitors at Salford's Tourist Information Centre on Salford Quays and will eventually become part of the **LifeTimes** archive." For more information call Diane Lee on 0161 872 7463.

LifeTimes on the web

By the time you read this, the **LifeTimes** website should be fully up and running. Listen to people talking about their memories of Salford, see photos we have collected, find out what's happening, find links to other sites, and lots more. There's also a **LifeTimes**

bulletin board where you can swap messages and 'speak' to other **LifeTimes** enthusiasts.

Visit the site at www.lifetimes.org.uk and let us know what you think. With your help, we'll make it one of the best Salford websites on the internet!

LifeTimes

The LifeTimes project will tell the story of the whole of The City of Salford...

Adelphi
Barton
 Blackfriars
Boothstown
 Brindleheath
Cadishead
 Charlestown
Claremont
 Clifton
Eccles
 Ellenbrook
Higher Broughton
 Irlam
Irlams o'th' Height
 Kersal
Langworthy
 Little Hulton
Lower Broughton
 Monton
Ordsall
 Patricroft
Peel Green
 Pendlebury
Pendleton
 Seedley
Swinton
 Trinity
Walkden
 Wardley
Weaste
 Winton
Worsley

We hope we have included everybody - **if we have missed your community please let us know!**

More missing districts...

Thanks to Mary Wheeler for pointing out that Adelphi was missing from our list of Salford districts. As you can see, it's now top of the list.

Salford City of Education & Leisure