

THE MAGAZINE FOR PEOPLE WHO LIVE OR WORK IN SALFORD

FREE

SALFORD

JUNE 1999

RD

PEOPLE



**WIN A FAMILY
DAY OUT!**

PLUS

Cover Story: Radio Star Margaret McKinnon
What kind of Salford will we leave for our children?
News of city's Millennium plans
Local events through June and July
What can the Lowry do for you?
Salford Housing News

Contents page sponsored by:

The COÖPERATIVE BANK

See our advert on page 6



SALFORD PEOPLE CONTENTS JUNE 1999 • Issue 1

- 2 News 
- 4 Staying healthy
- 5 Get fit
- 8 Jobs 
- 9 Have your say on Salford 2016
- 11 Countdown to the Millennium 
- 12 In person
Felicity Goodey spells out the contribution the Lowry will make to life in Salford in the 21st Century.
- 15 Win a family day out
- 17 Salford Housing News
- 21 A to Z of services
- 22 Voluntary Sector
- 23 Know your councillor 
- 24 ON in Salford

Salford People is a City of Salford publication. It is managed by an editorial board made up of members of the city council, edited and administered by the city council's communications and public relations unit and is designed by the Graphics Unit, City of Salford 793 3761. The first edition will be distributed week commencing Monday 7 June. Content, advertising, layout: Communications and public relations, 793 3157. Printing: Trafford Press 872 2991. Distribution: To more than 106,000 households, by the Royal Mail's door-to-door service. Contact: Editorial Board, Salford People, FREEPOST NWW1358, Swinton M27 7BD.

City of
Salford

it's here!

Salford's **NEW** magazine

THIS magazine is here to keep you up to date with the services that can help you and your friends and neighbours, and to let you know how to get in touch with us when you need to.

It has cost less than 16p per issue to design, print and deliver this magazine to you. More than 100,000 households in the city have been sent the publication.

We will pay for Salford People by getting better value for the money we already spend on publicity. We have scrapped The Citizen, the council's newspaper,

as well as the tenants' newsletter Housing News. This is now provided as part of Salford People instead.

We aim to publicise our key consultation exercises through Salford People, and to concentrate on putting as much information as we can into this regular magazine.

Also, as we explain on page 7, we have been told by government we must do more to inform and involve residents, and this is just one way we intend to achieve that.

If you want to give us your views about any aspect of the magazine, get in touch by calling:

Ian Andrew on
793 3157

or write to us at Salford
People, FREEPOST NWW1358
Salford City Council,
Swinton M27 7BD.

cover story

RADIO STAR

School pupil **Margaret McKinnon** had her say at this year's local elections - though she's only 12! Moorside High pupil Margaret, of Claremont Road, Salford 6, was one of only 10 pupils from across Greater Manchester chosen to star in a radio advert reminding people about voting day in May. And she played her part in persuading more than 3,000 more people to vote this year than last, an increase in turnout of more than 2.4 per cent. She said: *"I think it's really important adults vote: That's the only way things will change."*



SUPER FOUR land learning prizes

FOUR super Salford students have won top awards.

Teresa Mondol, Sylvia Oakes, Shirley Ryder and Andrew Rainfold are the city's adult learners of the year.

Eccles' Teresa (pictured) also landed recognition from NIACE, the National Organisation of Adult Continuing Education.

She is studying social care at Salford College. Despite having recently become a widow and being a stranger to British life and language, she's now a fully-trained Citizens Advice Bureau adviser.

Sylvia has overcome her disability in studying at Eccles College; Shirley has tackled her learning disability through on-the-job training with charity MENCAP, and Andrew is studying to become a chef despite the pressures of being a single dad.

• Last year's adult learner of the year award went to dedicated Avril Goldfinch.

Winton 41-year-old Avril launched a new life for herself by returning to education after 20 years caring for her severely handicapped daughter.



SOCCER PROJECT NETS A FUTURE

The legacy of Busby babe Eddie Colman has rescued a cash-starved Salford soccer project

SALFORD Football Community Link has been rescued by a grant from the official disaster fund set up after the 1958 Munich Air Disaster.

Around £35,000 from the fund will ensure the project continues to train adults as soccer coaches and organisers, and give local youngsters soccer skills and the chance to play the world's greatest game - for at least another 12 months.

City council chiefs now aim to secure new cash to help the scheme carry on after that.

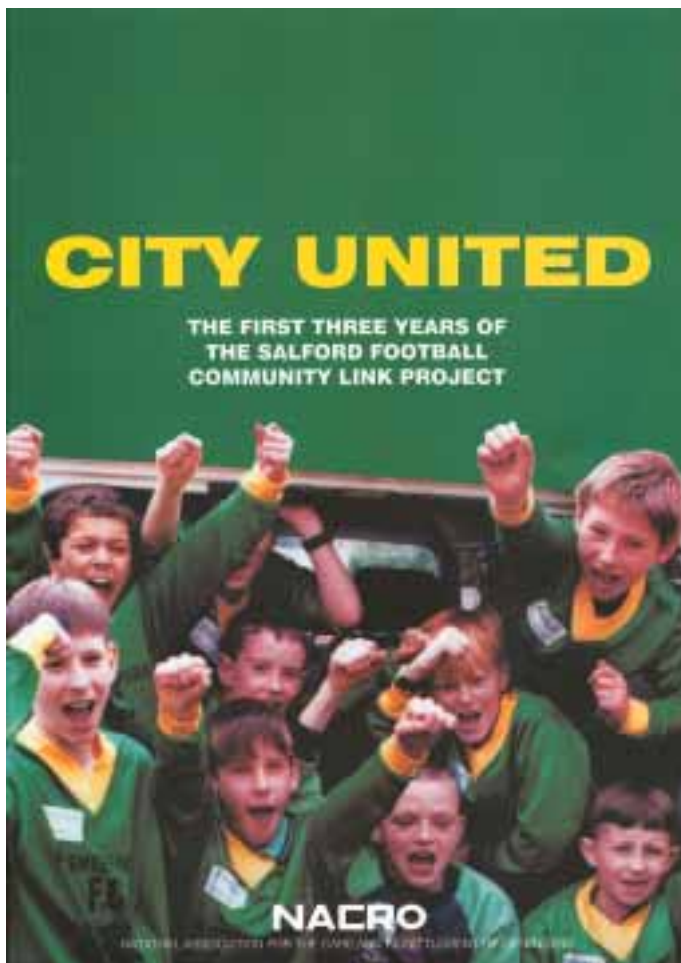
The project will now officially become the Eddie Colman Community Football Project as a condition of the money being given is that the project is re-named in memory of the former Ordsall soccer star.

A charitable fund will be set up to pay rent for an office base, office expenses, the salary of co-ordinator Peter Barnett, expenses for volunteers, equipment for clubs to use, trips out for the teams taking part and trophies.

Explained Peter, of the National Association for the Care and Resettlement of Offenders (NACRO), the charity behind the scheme: "This is truly great news. We have to work so hard to raise the funding we need all the time, this grant will come as a huge relief.

"I'm sure all the kids taking part will be honoured to be able to celebrate the memory of a Busby babe.

"At any one time, 1,000 young people and 130 volunteers are taking part in the project, and its



successes are there for everyone to see."

Added Salford City Council leader Councillor Bill Hinds: "This kind of project does so much good, we are determined



to see it gets all the help we can give.

"We'll now be looking into ways of making sure the project's financial future is made more secure."

CITY PLAYS ITS PART

SALFORD people offered help to refugees fleeing their own homes amid the war in the former Yugoslavia.

The city council offered to house around 150 family groups in tower block Ruthin Court at Salford Precinct, last month.

They made their offer after government chiefs stepped up an appeal for help from local authorities nationwide.

Local residents and staff volunteered their help and badly-needed home comforts to help

provide for the refugees.

Said council leader Councillor Bill Hinds: "These are desperate circumstances for the refugees and in the face of an international emergency, the government

needed local authorities like Salford to take action.

"The government have made it clear they will pay for all the work necessary to provide for the refugees while they are here.

"Our own tenants have recently moved out of Ruthin Court ready for it to be sold. It is still our plan to dispose of the block as it is not going to be economic to carry out structural repairs in the long term.

"I know local residents are proud to be able to offer a help to these people in their dreadful plight."

KOSOVO

Four City of Salford workers drove trucks to Kosovo to aid the international relief effort. Lee Jackson, Chris Doyle, Tony Marsh and Tony D'Arcy, all HGV drivers for the city's environmental team based at Turnpike House in Eccles New Road, took part in a 10-day aid trip organised by regulars from the Britannia Inn, Urmston.

SURE START IN SALFORD

New-born children in Salford's hard-hit inner city will each get a £200 government maternity grant as part of the new Sure Start initiative. Langworthy, Seedley and Pendleton Precinct are among only 20 areas nationally to land a share of the £100 million on offer nationally to help boost care for 0-4 year olds. The three year project in Salford could bring in £3 million over the next three

years, but public and private sector support for the scheme will total up to £10 million. The overall objective of the scheme is to help the physical, intellectual and social development of children currently in danger of becoming part of a socially excluded 'underclass'. Explained city council leader Councillor Bill Hinds: "We bid for this funding from Whitehall, so we are delighted to have been successful in persuading the government to give us this vital support."



BID FOR LANGWORTHY CASH

The city council has bid for £25 million of government cash to help improve Langworthy and Seedley.

Local residents helped draw up plans for the area as part of the series of Planning for Real meetings.

A questionnaire survey generated detailed responses from more than 70 per cent of households in the area.

These have helped the council shape the detailed bid for cash under the Single Regeneration Budget.

Whitehall announces this month the areas that have made successful bids, and any cash will be paid in September.

• For copies of the Sure Start and SRB bids, write to our freepost address.



SALFORD & TRAFFORD

HEALTH IMPROVEMENT PROGRAMME



*We believe:
'health is a
basic human
right'*

BETTER health services are prescribed for Salford residents - from cradle to grave.

About £4.78 million will be spent by next April on the first-ever Salford and Trafford Health Improvement Programme (HImp). The programme has been drawn up by Salford and Trafford Health Authority with Salford City and Trafford Borough Councils, to boost social services and NHS care.

Local hospitals, GPs, community health workers and community groups have helped agree six priorities for action.

Six priorities:

- improve the health of four groups:
 - children
 - young adults
 - adults and
 - older people
- aid NHS initiatives to reduce waiting lists;
- improve primary care services;
- give staff better education and training;
- improve anti-drug abuse strategy and
- upgrading computer information systems. HImps - with the help of the current Health Action Zone - are designed to help people where social and economic deprivation is worst.

Objectives:

- involve local people more, giving them more opportunity to help themselves;
- more health promotion in schools;
- more practical and emotional support for parents of young children in disadvantaged areas;
- better services for the mentally ill and their carers;
- more help for people who want to stop smoking;
- better services for drug users;
- better care of children in children's homes;
- more support for older people who want to stay in their own homes.

Children and young people

Problems as diverse as damp housing, unwanted teenage pregnancies, young smokers, drug treatment and care, will get special attention.

Adults aged 17-24

Top priorities include boosting sexual health services; clinics to help young smokers stop; forming a Drug Action Team; helping make young disabled people more independent; and prevention and treatment services for young people with behaviour disorders.

Adults

Prevention and treatment of heart disease, strokes and cancers are key priorities here. In some areas, demand for mental health services is among the highest in the country, so services will be improved, especially for high-risk groups.

Older people

A rapid response team will be developed in Salford and other support and treatment services improved to help older people remain in their own homes. Training and support for residential and nursing homes will be reviewed. A new care strategy should give more support to people who are dying, their families and carers.

For a free summary of the HImp, write to Maureen Douglas, Salford & Trafford Health Authority, Peel House, Albert Street, Eccles, Manchester M30 0NJ. **Tel: 787 0211.**



Holiday advice

Beat the timeshare 'bargains'!

If you've just had a telephone call offering you a free gift if you attend a timeshare presentation...beware! These promotions are notorious for being hard sell events. **Don't** take your cheque book or your credit card. **Don't** sign any contract until you are certain you really do want a timeshare holiday. Any contract signed in the UK has a 14 day 'cooling off' period in which you have the right to cancel at no cost. All sellers must give you notice of your cancellation rights - they break the law if they don't. If you decide to cancel, write to the seller without delay - any notification in



writing will do, but use a cancellation notice if they've sent you one. **Keep** a copy of anything you send to the seller and, ideally, send items by recorded delivery.

HOLIDAY HEALTH

Did you know? more than 2,000 people return to the UK from holiday suffering from malaria

It's easy to forget the health risks from trips abroad. **Get** a leaflet free from the Health Literature Line on freephone 0800 555777.

For more top tips, get a copy of the free Salford Trading Standards Spotlight newsletter. Send your name and address to Watchdog, Salford People, **FREEPOST NWW1358**, Swinton, M27 7BD and they'll put you on their mailing list.

Watchdog tip

SALFORD'S HEALTH BLACKSPOTS

CHILDREN

A higher proportion of babies than the national average are born in Salford and Trafford with a low birth weight of 2.5kg or less - 8.1 compared to 7.5 per cent.

YOUNG ADULTS

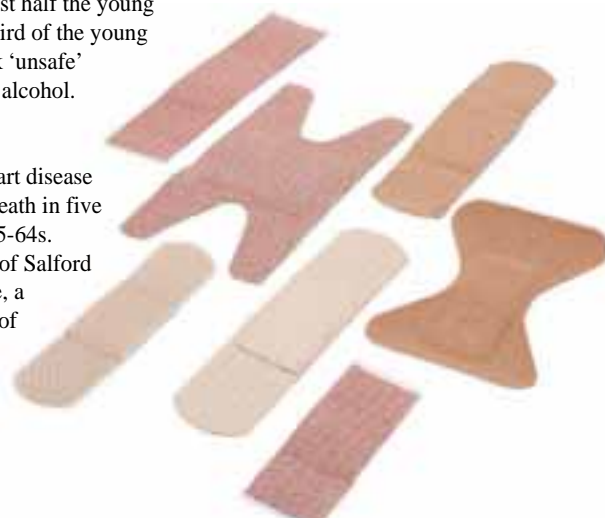
According to a local health survey, nearly half the young men and women between 20 and 24 smoke; almost half the young men and a third of the young women drink 'unsafe' quantities of alcohol.

ADULTS

Coronary heart disease causes one death in five among the 25-64s. Over a third of Salford adults smoke, a major cause of heart disease.

OLDER PEOPLE

Compared with the North West, older Salford residents are 50 per cent more likely to be admitted to hospital with heart disease or strokes. Hospital admission rates for accidental injuries, which can be fatal, are 80 per cent above the regional average.



GET FIT *be healthy!*

Fit City Eccles already has one, Fit City Cadishead has too, and Fit City Irlam are due to open their new facilities later this month.

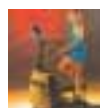
There's eventually going to be one in each city council-run leisure centre across the city - new Health and Fitness suites are opening near you!

The key to the modern equipment in these centres is that they give you the chance to get fit and stay fit at your own pace.

Computerised equipment includes:

- treadmills
- exercise bikes
- cross trainers

Expert staff will help you develop a personal workout programme just right for you, because it is matched to your own health and fitness goals and abilities.



Fit City sports centres with opening times
BROUGHTON
Camp Street 792 2375
8.30am-11pm

CADISHEAD
Lords Street, 775 7928
9am-10pm

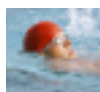
CLARENDON
Liverpool Street, 736 1494
9am-11pm

ORDSALL
Craven Drive, 848 0646
8.30am-10.30pm

PENDLEBURY
Cromwell Road, 793 1750
Mon/Tue/Thur 8am-11pm Wed/Fri 7am-11pm.
Sat 8am-9.30pm Sun 8am- 10pm

ECCLES
Barton Lane, 787 7107
Mon-Fri 7.15am-10.30pm, Sat/Sun 8am-9.30pm

WALKDEN
Birch Road, 799 4585
5.30-10.30pm dual-use centre with nearby school



Swimming pools
BROUGHTON
Great Cheetham Street West, 792 2847
Fri 12 noon-5.30pm Sun 9am-1pm

WORSLEY
Bridgewater Road, 790 2084
Mon, Thu, Fri 9am-8pm; Tue 9am-5.30pm;
Wed 9am-7.30pm, Sat 9am-12 noon;
Sun 8.30am-12 noon.

IRLAM
Liverpool Road, 775 4134
Mon 7.30am-6.30pm; Tue 7.30am-5pm;
Wed-Fri 7.30am-7pm;
Sat 9.30am-12.30pm; Sun 9am-12 noon

FITNESS CLASSES call for details of classes at your local centre

FIT CITY BROUGHTON

Mon	Aerobics	7.15pm	-	8.15pm
Tues	Bums and Tums	7.00pm	-	8.00pm
Thur	Circuit Training	6.00pm	-	7.00pm
Sat	Salsa, Western and Disco Dancing	12.00pm	-	2.00pm

FIT CITY CLARENDON

Mon	Stretch and Tone	1.00pm	-	2.00pm
Tue	Aqua-aerobics	12.00pm	-	1.00pm
Wed	Aqua-aerobics	6.30pm	-	7.30pm
Sun	Aqua-aerobics	6.30pm	-	7.30pm
Thur	Alternate Abdominals	12.00pm	-	12.30pm
Tue	Ladies Morning	10.00am	-	12.00pm
Thur	(Aerobics, Swim, Gym) Swimming (Adults only)	10.00am	-	12.00pm
Mon/Wed/Fri	Dawn Swims	7.00am	-	8.45am
Mon/Fri	Lunch Time	12.00pm	-	1.00pm
Mon	Evening	7.00pm	-	8.30pm
Fri		6.00pm	-	7.30pm
Sat	Weekend	8.30am	-	10.00am
Sun		3.30pm	-	5.00pm

FIT CITY PENDLEBURY

Mon	Ladies Morning	9.30am	-	11.30am
	Fitness Firm Aerobics	7.15pm	-	8.15pm
	Adult Lane Swim	6.30pm	-	7.30pm
Tue	Swim Fit	2.15pm	-	3.15pm
	50+ Swim	3.15pm	-	4.00pm
Wed	Adult Lane Swim	7.00pm	-	8.00pm
Thur	Fitness Firm Aerobics	7.15pm	-	8.15pm
	Ladies Only	8.00pm	-	9.00pm
Sat	Fit Kids	9.30am	-	11.30am
Sun	Circuit Training	11.00am	-	12.00pm
	Swim Fit	6.00pm	-	7.00pm

To get a personal introductory session at any one of the Health and Fitness Suites at a special Salford People price of just **£4**, complete this coupon and hand it in at the reception desk at Eccles, Cadishead or Irlam.

**£1
off!**

Name

Address

Telephone Number

Please tick this box if you do NOT want us to send you details of the Passport to Leisure, which offers discounts on all activities in our centres

'reet good' treat



CATERING students Sarah Toft and David Williams cooked a reet good treat for their hosts when they popped across the Channel earlier this year.

They prepared traditional northern delicacies black pudding and bubble and squeak for their French hosts when they joined a town twinning exchange visit to St Ouen.

The pair, from Salford University's leisure and hospitality studies department, prepared the meal for around 100 guests

Lunen visit

Salford youngster Rebecca Seddon enjoys a Lunen visit last summer thanks to links between churches here and in the German town. For details of how those links will feature in the city's Millennium celebrations, see page 11.



TWINNING HIGHLIGHTS

Salford Youth Service organised a group of young people to visit St Ouen last year - French students come to our city later this year...A delegation of civic visitors from Narbonne came to Salford during April to investigate restoring links with the French town. Local companies are to be invited to the Narbonne Trade Fair later in the year, while a new Narbonne Twinning Association will be set up here later this month as a result of the visit...Junior soccer stars from Lunen came here in October. Now local youngsters are to make a visit of their own there this month...Two artists from Salford University travelled to France to exhibit their work at the St Ouen Salon last month.

Claudine

What better way to learn a language than move to that country and work there?

That's what brought languages and business student Claudine Parent to Salford.

Having arrived in April for four months, she is staying in student accommodation at Castle Irwell, and is still getting used to the unlikely intonation of the local accent as she tries to get to grips with English.

"It is difficult, as I am really not very good at English," she said, modestly. "But it will be very useful for me. I hope one day to be a journalist."

From twin town Clermont-Ferrand, Claudine heard from other students who have come here on placement about the opportunities Salford offers, and now she's helping out town twinning officer Andrew Beattie.

One of her first jobs was to take a visiting party from St Ouen on a guided tour of the city.

Her verdict on Salford so far? "It's cloudy!" she said.



Direct Personal Loan Scheme for readers of The Salford People

The COOPERATIVE BANK

The rates have been negotiated for you and are amongst the best on the market

There are no 'arrangement' or 'set up' fees

Repayments by Standing Order for your convenience

Loans are available from £1,000 up to £15,000

The loan monies are transferred direct to your own bank account

An instant decision can be obtained 7 days a week

With Repayment Protection. Actual payments may differ by a few pence.					Without Repayment Protection. Actual payments may differ by a few pence.				
LOAN	84 MONTHS	36 MONTHS	12 MONTHS	FIXED APR	LOAN	84 MONTHS	36 MONTHS	12 MONTHS	FIXED APR
£10,000	213.54	370.88	953.92	9.9%	£10,000	177.68	333.18	889.45	12.9%
£6,000	139.34	231.49	580.65	12.9%	£6,000	115.32	207.60	541.13	15.9%
£1,000	25.76	40.56	98.58	16.9%	£1,000	20.70	35.88	91.42	18.9%

SIMPLY RING FREEPHONE

For an instant decision or further details

0800 591 682

QUOTING REF. '791713'

to the operator to obtain your Direct Loan

Lines are open 7 days a week
8.00am to 9.00pm Monday to Friday
8.00am to 8.00pm Saturday and 9.00am to 6.00pm Sunday

Example 1: If you wish to borrow £6,000 over 48 months with repayment protection, the monthly repayment will be £189.26. Total repayment over the term of the loan: £9,084.48 at an APR of 12.9%. **Example 2:** If you wish to borrow £5,000 over 48 months without repayment protection, the monthly repayment will be £166.56. Total repayment over the term of the loan: £7,994.88 at an APR of 15.9%. Written quotations available on request. Rates correct at time of printing (05/99). All loans subject to status and available to persons aged from 18 years upto their 70th birthday. The Bank reserves the right to decline any application.

Registered Office: The Co-operative Bank p.l.c., 1 Balloon Street, Manchester M60 4EP. Registered number: 990937

CLOSER TO THE PEOPLE



'THE biggest change in local government in almost 30 years.' That's how city bosses have described a new shake up ordered by Whitehall.

Councils all over the country have had to start changing the way they work. The changes come about because of the government's White Paper 'Closer to the People'.

There is likely to be a new set of laws soon based on this White Paper. The new laws are designed to cut red tape, make councils more accountable, and help improve value for money for the taxpayer.

Now local authorities like Salford are being asked to respond to the proposals. Council chiefs have outlined the changes that might happen here in Salford. They say they want to know more about what local people think.

Here's a summary of the changes planned for Salford City Council:

- City councillors aim to set up a 'cabinet' of around 10 senior councillors to govern the city. These senior councillors will be expected to develop and co-ordinate council policy;
- The cabinet's decisions will be scrutinised by all councillors at regular 'full council' meetings that everyone can attend. Part of that meeting will be open for local people to take part in, too;
- At the moment, Salford City Council runs a system with around 25 committees and sub-committees.

Many of these will be scrapped, with details of the council's work to be studied instead by four new 'scrutiny committees'. Three of these committees will focus on the well-being of the city, each from a different point of view: economic, social, environmental. The other committee will scrutinise the quality of the council's services;

- Councils all over the country have been ordered to set up a network of community committees like those that have been working here for as long as five years. Salford's existing community committees will be given more powers to improve services in their area, and a small budget of their own;
- Councillors will also set up an advisory panel and a standards committee to help improve the council's effectiveness and keep a check on ethical standards;
- Regulatory panels will continue the technical work needed so planning and licensing decisions can be properly and fairly resolved.



A FULL information and consultation programme is planned to give local people a clearer view of what the civic centre changes are all about.

The council will produce:

- a detailed prospectus explaining the changes;
- a leaflet and communications pack;
- a newsletter for councillors;
- briefings for staff;
- training for staff;
- news releases;
- a presentation to community committees;
- updates on the council's web page;
- posters in public buildings;
- advertising on buses;
- displays in other public places.

The changes being discussed by council chiefs at the moment need to be ready to put into practice by the Autumn.

To be kept informed of the city council's plans, simply fill in the coupon here in the magazine, and you'll be sent the prospectus and leaflet when they become available next month.



CLOSER TO THE PEOPLE

Please keep me informed of changes to the way my council is run

Name

Address

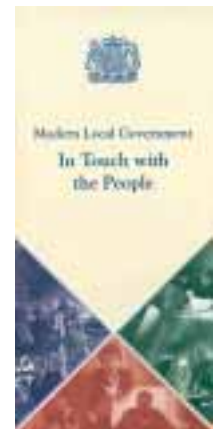
Tel

Please return this coupon to
Salford People, FREEPOST
NWW1358, Swinton, M27 7BD.

COUNCIL CHANGES

The government say councils like City of Salford must change the way they work.

We must do more to tell people about what we are doing, and consult you more about changes that might affect you. The government say we must change our organisation so that more decisions are taken in local communities instead of at council committees. And they have ordered all councils to consider whether to have an elected mayor or a 'cabinet-style' set up - where a small group of top councillors are effectively in charge - like in Whitehall.



EDUCATION & LEISURE DIRECTORATE

Citywide and Leisure Services DSO

Providing a range of quality commercial services in locations across the city, we require enthusiastic individuals to help us build on our success. In particular we are looking for:

Casual Bar and/or Silver Service Staff

£15.00 for first 3 1/2 hours and £3.60 ph thereafter (Ref 2000/sp)

Working on wedding receptions, celebration parties etc, in the evening and/or weekends at Lancastrian Hall, Pembroke Hall, Buile Hill Park Banqueting Suite and Worsley Court House. You must be aged 18+ to work in bars. A uniform is provided.

Casual Catering Assistants

At age 18 is either £4.32 ph or £4.34 ph dependent upon place of work (Ref 3000/sp)

Working at staff restaurants and cafes throughout the Salford area, you would be required to cover short term absences of permanent staff members. Duties include general food preparation, serving meals and general cleaning. Hours of work vary between each unit but are generally between 9.00am and 3.00pm, Monday to Friday. A full uniform is provided.

Casual Leisure Attendants

£4.49 ph or £4.65 ph depending on work undertaken/possession of the National Pool Lifeguard Certificate (Ref 5000/sp)

Supervising members of the public using a variety of leisure facilities within swimming pools/leisure centres. Generally the centres are open from 9.00am to 11.00pm, seven days per week.

Casual Cleaners

£4.34 ph (Ref 8000/sp)

Most of the work available is in schools but we also provide a cleaning service for other council premises (eg offices, sheltered housing schemes etc). Generally, school cleaning starts at about 3.30pm, office cleaning at 4.30pm, whilst some other premises may require an early morning start. The working week is usually Monday to Friday.

Casual Catering Assistants

£4.32 ph plus a meal provided whilst on duty (Ref 9000/sp)

To work in schools helping with food preparation, serving of meals and general cleaning within the kitchens. Hours vary but are usually between one and three hours per day, usually between 9.00am and 2.00pm, Monday to Friday during term-time.

All of our casual employment opportunities provide an excellent way of gaining valuable work experience. Appropriate training and support is given.

HOUSING SERVICES DIRECTORATE

Scheme Assistants (Casual and Relief Staff)

Petrie Court £5.69 ph plus enhancements (Ref 1559/sp)

Petrie Court is an 11 bedded Supported Accommodation Project for single people aged 16-25 years. We are seeking to establish a pool of staff who are able to provide cover for short term staff absences, as and when required.

Experience is less important than personal qualities. You must be available to work at short notice and be able to work unsocial hours (evenings, nights, weekends and bank holidays). You will be able to deal effectively with stressful situations and have the ability to remain calm under pressure. You will be tactful, diplomatic and assertive when necessary, and you will have an empathy with homeless young people.

School Crossing Patrols

Permanent and Stand-by

Several school crossing points are without cover, and, as a consequence, children travelling to and from school are having to cross busy roads without assistance.

Why not consider becoming a School Crossing Patrol? You would play a valuable role in the local community. We, of course, provide full training and uniform. Anyone under 69 years of age is welcome to apply.

If you, a relative or friend think you can help, please contact the staff at the City of Salford Road Safety Unit, on 0161 793 3791, who will be happy to give further information on locations, pay and conditions etc.

Application forms may be obtained from the Director of Personnel Services, Salford Civic Centre, Chorley Road, Swinton, Salford M27 5BN, tel. 0161 793 3507 (answerphone service after office hours). Minicom 0161 793 2544 (hearing impaired applicants only). Please quote post reference in all communications.

Salford City Council is striving to be an Equal Opportunities Employer and positively encourages applications from all sections of the community.

The Authority operates a Job Share Scheme, details of which are available on request.



City of Salford

A question of time

A SUSTAINABLE city, designed around people's needs. A rejuvenated and revitalised place to live and work with a dynamic and diverse economy offering jobs for all.

Residential and commercial uses that are accessible and involve high quality design. Protected green belt, more development within the existing built-up environment, with a strong public transport system offering a genuine alternative to the car.

That's the vision of Salford 2016 put forward in a new consultation paper on the review of the Council's Unitary Development Plan or UDP. The question is: Can we achieve the vision, and if so, how?

Now is your chance to have your say on how the future of Salford should be planned. The city council is asking for your views on the Salford of tomorrow. Write to us now, or send for more information by using the green coupon on page 15.

Can we create an environment where people want to live and work, now and in the future?

Well, the only thing that is certain is that our city will face fundamental change over the next 20 years. Just look at the feature below outlining the significant change that has already happened here - and then ask yourself: What do I want to see happen next?



HOME

1962 The city was dominated by terraced housing, much of it in a poor state of repair. Around 295,000 people lived in Salford, 125,000 of them in the inner city. **1980** Slum clearance had got rid of many of the worst properties, while the inner city population had fallen to less than 70,000. **1998** Key areas of Ordsall, Broughton and Pendleton are the focus of substantial new investment, featuring mixed development. The population has fallen to around 227,800. **2016** **Where will people live? How many people will live in Salford? Official estimates say the number will fall. How many homes will there be in the city? Official estimates say there is a trend towards smaller households - so will the number of households rise?**

The Unitary Development Plan or UDP guides development and improvement activity in the City. The Council are reviewing the UDP and have produced a consultation paper identifying the key issues the revised plan will need to tackle if our future vision of the city is to be achieved by 2016.

WORK

1962 Salford Docks was part of one of the busiest ports in the country. Manufacturing was the dominant sector. Unemployment was just 1 per cent, with steel and coal still major employers in the city. **1980** Unemployment had rocketed to 14%. The docks had lost 3,000 jobs, with textiles, chemicals

Unemployment was just 1%, with steel and coal still major employers in the city

and engineering badly hit. Irlam steelworks had closed. **1998** Job gains in the service industries replaced the massive losses in manufacturing. The docks have become Salford Quays, a new business and residential area. The highly-successful Northbank Industrial Park has replaced the steelworks. Unemployment is down again at 5.1 per cent, but there are pockets of long-term unemployment. **2016** **Where will people work? Will people continue to commute to work? In what type of job? Will home-working increase?**





TRAVEL

1962 The M63 to Worsley had just been completed, and Salford had its own bus system. **1980** Broad Street had been widened, M62 and M61 motorways completed and public transport was now run at regional level. **1998** The M62, M61 and the M602 had helped complete the motorway network around the city, with the M60 forming a ring road around Manchester city centre. Former railway lines have been reclaimed as footpaths, and Metrolink trams are about to come to the city. **2016** **How will people travel? Will use of public transport increase? Can we cut the impact on the environment?**

LEISURE

1962 Pubs were ever popular. Manchester Racecourse at Castle Irwell was to close the following year. Not everyone had a TV, but a new programme called Coronation Street was based in parts of Salford. Salford Rugby League Football Club are about to become one of the top clubs in the sport, and regularly draw crowds well over 10,000 to games. **1980** Bingo was replacing cinemas, and home entertainment was becoming more popular. **1998** Cinemas top the bill for entertainment again, with other major developments including Wardley Superbowl and bingo clubs at Pendleton and Walkden. Salford Reds are back in the sport's elite, but on smaller crowds. **2016** **How will people spend their leisure time? Will home entertainment continue to grow?**

HEALTH

1962 Smog was a huge problem. The city had just seen its worst month for air pollution since records began. The area was served by a number of hospitals including Salford Royal, Eccles and Patricroft, Bridgewater, Ladywell, Swinton, Hope and Pendlebury Children's Hospital. **1980** Air quality had seen a massive improvement. Salford had become the first city in Europe to have full smoke control in 1976. Lead pollution from petrol was becoming a major concern. **1998** Most cars now run on unleaded petrol, but air pollution is still a problem with the number of asthma cases on the rise. Changes in the NHS have brought a rationalisation of hospitals, with Hope the only hospital and care in the home. **2016** **Will Salford be a healthier city?**



SHOPPING

1962 The city relied on traditional shops in terraces on main roads. Regent Road and Broad Street were among the main shopping areas. Salford's first-ever purpose-built supermarket had opened the year before, the Kenton Supermarket on Lower Broughton Road. **1980** Modern precincts had been built at Eccles, Swinton, Pendleton and Walkden, as well as smaller centres like Ordsall, Lower Broughton and Little Hulton. Broad Street and Regent Street had been cleared, with supermarkets now the dominant type of shop. **1998** Most of the centres have seen major improvements recently. A move towards out-of-town shopping has brought new investment to Regent Road. Home shopping and Internet selling are new areas of growth, with shopping increasingly seen as a leisure activity. **2016** **Where will people shop? What is the future for Salford's town centres?**

LISTENING TO YOU

THE City Council want to produce a plan that is comprehensive and realistic. We want to consult as widely as possible in drawing up this plan.

The new issues paper is the very first step in this process.

Use the green coupon on page 16 to order your copy of the issues paper or give your comments on what you think the new plan should say.

The City Council will be happy to accept comments on this issues paper until Friday 16 July.

But there will be plenty of other opportunities to have your say. Your local community committee may be discussing the UDP at one of its future meetings - see the list on page 22 for details of the next meeting in your area.

Once consultation on this issues paper is complete a deposit draft unitary development plan will be produced early next year.

You will have a further opportunity to comment on this document, too.

After that, any remaining formal objections will be heard at a public inquiry.

Finally, a new unitary development plan will be completed and formally adopted by the city council early in the new century.

You can write to us on this matter at any time and your views will be taken into account.



Salford

Millennium City

PLANS for year 2000 celebrations in Salford aim to bring the city's communities together.

The city's Millennium preparations should complement summer festivals organised in each community for which local people are devising events themselves.

A Millennium Marquee will also be touring sites around the City of Salford to help make sure everyone has the chance to join in.

Also, the Millennium Waterfronts Festival will link the canals and rivers of Salford, Manchester, Trafford and Tameside throughout 2000.

Events and exhibition sites are planned along the waterfronts

with special celebrations to open and close the Millennium year.

All this plus the opening of The Lowry, which will be a national focus of activity during the year because of its special status as the National Millennium Landmark Project for the Arts.

A future series of workshops are being planned for the autumn with each community committee across the City.

If you have any ideas for Millennium events in Salford, or want to know more about what might be happening in your area, contact your local community committee or write to: Janet Roberts, Salford People, FREEPOST NWW 1358, Swinton, M27 7BD.

WHERE WILL YOU MARK THE MILLENNIUM?

There's a host of events being planned in Salford to help you mark the advent of the year 2000. The aim of the city's plans for celebration has been to complement the summer festivals organised in each of

the city's communities. Since the community launch in November 1997, consultation has continued. A special feature of Millennium celebrations across the area will be events and exhibition sites along canals and rivers - the Millennium Waterfronts. The timetable for the full year of events is outlined on page 14.

Salford
Millennium City



Plans for Celebrating the Millennium Year in Salford
1 December 1999 - 7 January 2001

CROWDS WILL GATHER

And for the big night itself, a programme of family entertainment is being put together in Salford, Trafford and Manchester through New Year's Eve, into the morning of 1 January 2000, and then into the First Weekend of the new year. One focal point for city celebrations will be at Salford Quays where there will be a family celebration with street entertainment, a radio roadshow, fireworks and fire displays until around 9pm.

After that the focus will switch to Manchester's Castlefield, where crowds will have been gathering all day to create a huge welcome for the new year. More details about the programme for New Years' Eve, and how to get there

and, watch out for the millennium competition in the next issue of Salford People.

CHURCHES TO HOST GERMAN VISITORS

SALFORD'S churches plan to join the Millennium celebrations, by hosting a visit from a 50-strong group of people from the city's German twin town of Lunen.

There have been regular exchange visits between church groups in the twin communities since around 1980, some through the twin town link, and some funded by the European Community's Youth for Europe.

But the plan is to use the opportunity of the year-long festival to organise a visit by a group of around 50 people during June 2000.

Explained St Luke's Weaste Rev Keith Archer, of the Salford/Lunen Churches Partnership: "Around eight years ago we

organised a group to go to Lunen and take part in the German national Kirchentag celebration.

Around 55 people went from Salford, and they prepared traditional English entertainments such as fish and chips, cricket and warm beer for their hosts.

"That could be the model for this visit to Salford next year. We hope their party will include a parish brass band, a gospel choir, dancing troupe. And we hope to join them in some traditional Westphalian fare!

"We hope they'll have the chance to join in the Broughton and Blackfriars community festival while they're here."



*It's on budget,
on time and on Salford
Quays. Lowry Trust
chairperson Felicity
Goodey explains what
The Lowry can do for the
city...and what you can
do for The Lowry*



that for us.

The money that we earned from the National Lottery has given us a wonderful opportunity. We know there are problems out there, and there are so many other ways that money could be useful. But that money was simply not available for roads, or hospitals or schools or all the other things needed in a city like Salford. But it was on offer for something like The Lowry.

Probably the most significant thing about The Lowry is this: It was not a project dreamed up simply to get money from the Lottery. It was a scheme that had already been planned and was simply waiting to happen. The council had drawn up plans for Salford Quays in the mid-1980s that earmarked this site for a performing arts centre. They spotted the power of the arts to transform an area, so when the Lottery came along they were ready to act. I was recruited to put together the kind of bid for funding that would make the thing possible.

This really will be a centre of international excellence. But that doesn't need to put people off. It doesn't mean it will be some palace of culture. There will be things you have to pay to see, of course there will. But there will be plenty to see and do inside that will cost nothing at all. It will be the kind of place that

people will want to visit, they'll want to meet here, and they'll want to enjoy what it has to offer. And there will be bars, there will be shops as well as theatres and galleries. All this can bring real prosperity and create jobs, but most of all it can raise people's aspirations.

It is our job on The Lowry Trust to look after The Lowry and make it the success the city and its people deserve.

A trustee is someone who looks after something on behalf of others. That's what I mean when I say I want people to feel The Lowry is theirs. We want you to go out and tell lots of people about it. We want you to be proud of it. Let The Lowry be a symbol of the changing face of Salford."

PROUD TO BE IN SALFORD

“The Lowry belongs to this city. We're proud our home is in Salford. We want the people out there to understand that. We want everyone in the city to feel The Lowry is theirs.

I have personally been connected with Salford for around 25 years, so I know it is a very unusual place. The people here are very creative, but they are also gutsy people. This city has gone through so many upheavals. Just look at the Quays, and the change from the busy docklands, and then the wasteland that was left when all that died. Now it's a thriving business centre with commerce and enterprise all around us. Because of that, there is also a recognition that Salford delivers.

Now The Lowry can offer the city something special. I guess we could have simply built a community theatre on this site. We might have enjoyed going there, but that would not have raised aspirations. It would not



have brought other investment. We could have invited local people to set the programme of events. But that would not have brought here the kind of top performances from across the arts world that we are going to see. We have brought top experts from that field here to do





SALFORD'S MILLENNIUM MAYOR is
Councillor Bernard Pennington.

COUNCILLOR Pennington deliberately chose to be Mayor in this special year.

The Mayoralty is passed each year to the longest-serving councillor which would have made him Mayor several years ago.

But Councillor Pennington chose to wait until now to take up the job as Salford's first citizen.

He took over the Mayoralty in May from Councillor Bill Moores.

Born in Walkden where he still lives with Jean, his wife of 43 years,

Councillor Pennington has two daughters and four grandchildren.

A former St Paul's Walkden Junior School pupil, he graduated from Manchester University in 1955 with a degree in physics. He was awarded an honorary MA in 1996 by Salford University.

He has been a Labour councillor since 1962.

He said: "It is a great honour to be given this opportunity to be Mayor, and I am looking forward enormously to the year ahead.

"I'm sure everyone in the city is looking forward to celebrating the Millennium at some point during the year 2000, and the plans each community has devised really do give everyone the chance to join in."

Every Mayor selects a local charity for which to raise funds during his year of office, and Councillor Pennington has chosen cancer research at the Royal Manchester Children's Hospital.

A former teacher, he now runs his own garden maintenance business.



SEE FOR YOURSELF

Salford People can take you behind the scenes for an exciting glimpse of The Lowry as building work approaches completion. We've got two guided tours planned for later this summer, but places are strictly limited. So fill in the coupon below, and we'll send you details next month of how you can join us on a special visit to watch this impressive building take shape.

FACTS ABOUT THE LOWRY

- THE NATIONAL LANDMARK MILLENNIUM PROJECT FOR THE ARTS

The Lowry will open on **April 28 2000** and will attract up to one million visitors each year.

exciting innovations in digital technology;

The Lowry will include:

- 1 Two theatres - a 1,730 seat theatre and a 450 seat adaptable space;
- 2 Two galleries - one housing the world's largest collection of LS Lowry's work, the other for temporary exhibitions;
- 3 The Digital World Centre - an international Showcase of

- 1 A lifting footbridge spanning the Manchester Ship Canal and connecting The Lowry with the Imperial War Museum for the North;
- 2 An open air plaza;
- 3 The Lowry Galleria - a retail, leisure and residential development which will also include a 12 screen Warner Village cinema;

- 1 The Lowry attracted £64 million from the National Lottery through The Millennium Commission, The Arts Council of England and The Heritage Lottery Fund;
- 2 North West Water and The Water Partnership have invested £4 million for environmental improvements to the Manchester Ship Canal to help create a new link from Manchester City Centre;
- 3 Almost eight million people live within one hour's drive of The Lowry.

FACTS

Name
.....

Address
.....
.....
.....
.....
.....

Tel no
.....

Names of other people
interested in joining a tour
.....
.....
.....
.....

**please send to: Salford People,
FREEPOST NWW1358
Salford City Council,
Swinton M27 7BD.**



Year 2000



calendar.....

Salford Quays

First weekend celebrations
Millennium Waterfronts Pageant
The Lowry opening and Community Festival
Millennium Waterfronts Pageant
River of Light
Millennium Triathlon and
Millennium Waterfronts Pageant
Visiting ships and commercial events
Last weekend celebrations

**31 December 1999
to 3 January 2000
27 April - 1 May
28 April
All April**

**19/20 August
TBA
31 December 2000**

Little Hulton

Community School and Millennium Marquee
Schools Arts Festival

21-26 May

Swinton/Pendlebury

Lancastrian Hall and Victoria Park

29/30 July - 2/3 August

Eccles

Town centre and Streets Ahead Festival

27-29 May - 5 June

Claremont/Weaste

Buile Hill Park and the Banqueting Suite

11-18 June

Broughton/Blackfriars/Charlestown/Kersal

The Crescent
International Friendship Festival
Salford Schools Festival - Voices of Promise
Community Waterfront Festival
at Peel Park/Irwell banks

21-25 June

Ordsall

Millennium Marquee in Ordsall Park
Salford Schools Festival -
Our Town's Story and Voices of Promise

1-5 July

Walkden/Worsley/Boothstown

Pembroke Hall & Ellesmere Centre
Millennium Waterfronts Pageant

**21-25 July
17/18 June**

Precinct/Broadwalk

Salford Shopping City & The Broadwalk
Street theatre

12-15 August

Irlam & Cadishead

Prince's Park Millennium Marquee & sports centre
Millennium Waterfronts Pageant

**23-29 August
July**

'Our Town's Story'

THREE 20-minute chances to perform in the Millennium Dome, a chance to renew links between Salford and the Italian city of Bologna, and an awful lot of hard work.

That's what lies ahead for groups of youngsters from three schools as part of the city's Millennium celebrations.

Using the work of LS Lowry and Italian artist Salieri as inspiration, the Salford group will tell 'Our town's story' on Tuesday 15 February 2000 in the Millennium Dome.

They'll perform their work three times during that day alongside other school groups to audiences from around the country visiting the centrepiece of the nation's celebration.

Pupils from Wentworth High School in Ellesmere Park, St George's RC in Worsley, and Walkden High all took part in the unique Bologna/Salford project over the past two years, which has involved performances of music and dance by English and Italian students in each city.

Education adviser Sarat Broughton is helping to co-ordinate the project. She said: "We expect to start work in September with a group of around 40 pupils. There will be a 'pre-Dome' concert here in Salford so that everyone here can see the full show.

THEATRE PLAN

SALFORD Open Theatre plan a special play for the Millennium.

The community theatre plan to recruit residents from the west of Salford - Walkden, Little Hulton, Worsley and Boothstown - to get them involved in the Theatre's work for the first time.

They always perform original work, and will employ professionals Maggie Willett and Mike Harris to write and direct their special production.

The aim is to perform the large-scale drama in July at Pembroke Halls during what will be the group's 10th anniversary.

Salford
Millennium City

WIN

a trip to the Centre of the EARTH

WIN a day out for the family at the Earth Centre, and you'll never look at the Earth in the same way again! Salford People has teamed up with the Doncaster based millennium attraction to offer an all-expenses paid outing to the newly-opened attraction.



Visit the Earth Centre and you'll never see the world the same way again!

There's a host of attractions showing how the world works, from amazing nine foot high characters in Wilderness Theatre, story telling on the volcano, quiz shows with Techno Bunny and the adventure play mound to the indoor rainbow at the Planet Earth Experience and the Future Gallery with images of how the world might change. What an experience!

Even if you don't land our fab day out prize, you can take your own trip to the Doncaster attraction. Call the Earth Centre on 01709 513933 for more details.

All you have to do to enter is simply fill out your name and address details and tick the box in the green coupon on this page. While you're at it, why not take the chance to have your say on Salford's future. Tick the boxes to

Make a Planet Pledge

and we'll lend a hand!



TELL us how you'll do your bit to save the planet, and we'll make it easier for you! We've got three super Eco-kits

to give away to Salford People readers keen to do their bit to improve the city's environment. Step one: Simply make a Planet Pledge using the green coupon on this page. A Planet Pledge is simply a promise to change one single thing in your lifestyle to help improve the environment in the Millennium year. The government's environmental campaign 'Going for Green' aims to get 100,000 Planet Pledges from around the country by the end of the year. We want to hand them 10,000 from Salford! Why not request a copy of Salford's Environment Strategy and see how the City is tackling its environmental responsibilities. Just tick the box on the green coupon and return it to the Freepost address. You don't even need a stamp! Step two: Keep your promise to improve the



environment. Step three: There's no step three...that's all there is to it! Three entries offering the brightest ideas for green action will each win a kit, consisting of garden seeds, a home composter to help you recycle garden waste, and even a book telling you more about living a greener lifestyle.

- Cut energy consumption: fit energy-saving lightbulbs in your house;
- Cut waste: recycle your newspapers and magazines - including this one!;
- Cut traffic pollution: make more journeys on foot or by public transport.

Here's some simple things you could put in your Planet Pledge:

get a copy of the UDP issues paper. The offer is for up to four children accompanied by two adults, and includes all public transport costs. Trains go direct to the site from Manchester daily.

The BIG green event for schools

MORE than 1,000 schoolchildren went wild about the environment at the Civic Centre last month. Salford Environment Day featured a host of hands-on activities for youngsters from city schools keen to find out more about green issues and why they're important to us all. It was the third such event held on the lawns outside the city council HQ in Chorley Road Swinton, and featured fun and informative sessions on everything from

recycling to safer public transport. As well as offering an educational time for pupils, Environment Day gives teachers a chance to make contacts and pick up new ideas for 'green' lessons.



GREEN COUPON

Name

Address

Post Code

Telephone Number

My Planet Pledge idea is

.....

- Please send me a copy of the **UDP** review document.
- Please keep me informed of later stages of this planning process.
- Please send me a copy of the **Environment Strategy**.
- Please enter me in a free draw for a family day out at the Earth Centre.

Return this coupon to:
Salford People, FREEPOST NWW1358, Swinton, M27 7BD.



A NEW Environment Strategy for Salford

CREATING a sustainable future out of our city's industrial past, that's the goal of Salford's Environment Strategy. The city council have produced this new



45-page report which aims to support the drive towards Sustainable Development by helping improve the quality of life of everyone in Salford, and at the same time make sure that our city plays its small part in solving global environmental problems.

As part of Salford's Local Agenda 21 Process the strategy sets out almost 100 things that will be actively promoted on 13 different themes to do with protecting and improving the city's environment.

It shows how local organisations, businesses, and individuals can help to make a positive impact on the world around us and help to build sustainable communities in Salford.

The Targets and Indicators in the document will be used to measure the City's 'green' performance. A key message is that it is only by people living and working in the city,

schools, and business doing their bit that these targets will actually be achieved.

The Strategy is not something the council has to produce by law, so it's further evidence the authority is serious about protecting the environment. Here's just four targets the City means to meet:

- double cycle use by 2002;
- cut energy consumption in Salford homes by 21 per cent by 2006;
- recycle/recover 40 per cent of domestic waste by 2006;
- Substantially increase the tree cover across Salford, as part of the Red Rose Forest initiative.

You can request a copy of the city's Environment Strategy by ticking the box on the green coupon, a version of the strategy will also be available soon on the Salford City Council web site at www.salford.gov.uk.

Also, look out later in the year for another document outlining the efforts already being made by local Salford people towards creating a cleaner, greener environment - the Grassroots Action Pack.



Wheelie great day out!

BUILE Hill Park will host a top fun event for everyone on Sunday 27 June.

And if you like bikes and cycling, this will be just for you!

The Cycle Fair and Child Safety Day, has been organised by the city council with the Salford and Trafford Health Authority, Cyclists Touring Club, the North West Cycling Campaign and local cycling and community groups.

The whole day will be a mixture of fun-packed activities, featuring a bike doctor, an aerial rescue demonstration, Wheels for All, child safety information displays and a big barbeque!



Greenfingers Scoop National Award

ONE of Salford's many gardening projects has won a national award for its work in promoting sustainable development.

The Down to Earth Gardening Project, run by the Anti-Rust Project, was the winning nomination from the City Council in the National Grid Community 21 Awards. Jonathan Porritt of Friends of the Earth presented the



award at a ceremony in London. The project, in which retired members of the community teach young people from inner city Salford gardening and food growing skills, also received £5,000 of funding to develop the project further. Awards like these are just the tip of the iceberg.

Throughout the City of Salford people are taking up the challenge of improving our environment.



HOUSING INVESTMENT IN THE CITY IS BIGGEST YET

Housing investment in Salford during 1999/2000 will be the biggest for the last 10 years with nearly £50 million being spent on a wide range of public and private works projects across the City.

This massive programme of work is part of the City Council's continuing strategy to provide a decent home for everyone in Salford.

The City Council's own housing stock will benefit from comprehensive investment through its repairs and maintenance programme.

- Money has been set aside for a programme of servicing to lifts, heating, electrical and gas appliances. This vital work aims to make sure that all appliances are safe to use.
- Over £8.5 million has been allocated for routine repairs to individual homes including security works and works to bring empty homes up to good standard.
- Over £9 million will be provided for a range of estate wide projects across the city including new heating systems, rewiring, external lights, fire alarms, re-roofing, new walkways, weed control, modernisation, structural repairs, new kitchens, new bathrooms, cavity walls and loft insulation and environmental works.
- In addition each housing area will receive funds for carrying out minor environmental works in their area. Your local Area Housing Sub-Committee will make decisions on how the environmental works will be carried out.
- A further £6.5 million has been allocated to carry out painting works to Council homes.

On top of this our capital programme will total nearly £18 million. This programme involves major works to Council estates and expenditure on private housing spent through improvement grants and renewal area work.



At the time of writing our plans for private sector housing investment had not been finalised but we can report that the budget has increased for:

- *The major priorities for the City Council are our renewal area in Eccles and areas with serious problems with empty homes in Broughton and Little Hulton.*
- *Action to stamp out bad landlords through action on houses split into flats*
- *Funds to help people who are elderly and disabled in private homes.*
- *Working with local partners we have submitted a major bid to the Government to deal with the housing problems in the Seedley and Langworthy area.*

The rest of the capital programme concentrates on continuing our work of area regeneration and improving the environment. We have investigated local housing



Work is taking place to improve local environments on our estates (above & above top)

conditions and are prioritising investigation and further work into areas with the most severe problems. We aim to consult with tenants who are affected during the year to draw up local solutions to local problems.

As well as work provided by the City Council, local housing associations are going to invest over £6 million on improving older houses as well as providing new homes, for rent and sale, in various locations.

A NEW INSPECTORATE FOR HOUSING

As part of its initiative called Best Value, the Government is to introduce a Housing Inspectorate for all council housing. The first housing inspections will start in April 2000.

This Inspectorate, which will be a separate arm of the Audit Commission, will visit each local authority on a 5 year rolling cycle. They will spend a number of weeks in each council, looking in details at the services provided and interviewing tenants. The Inspectorate will have a far reaching powers to make sure councils are achieving the Government's objectives in providing improved housing services.

There will be a role for tenants. It seems likely that the Government will invite local tenant representatives to join the inspection teams. Salford Council tenants have already responded to the Government's proposals and welcomed involvement in future reviews but expressed concern about the costs and the demand on their own time.



HMO Registration Scheme

A leaflet has been produced for landlords of flats, bedsits, shared houses or bed and breakfasts explaining the Council's new Houses in Multiple Occupation Registration Scheme.

Available from Sarah Pearson on 0161 925 1065.



Property to Rent Booklet

This booklet is available from Area Housing Offices and provides details of some of the properties that are available to rent now. It is aimed at people who are not currently Council tenants. The list of Area Housing Offices is at the back of this magazine.



Revamp for Tiger Moth Square



Work is now taking place on improving the square and local people have seen models of future ideas.

Tiger Moth Square is the focal point of the Mossvale estate in Irlam. Around the Square is the local shopping parade, the Tiger Moth pub, houses and Moorfield Primary School.

For a long time the poor condition of the Square has been a source of complaints and has been identified as a priority issue by the Mossvale Residents Association.

In 1998 a lottery application for a public arts project was rejected

Following this, a number of artists were invited to make a further proposal for the Square, leading to 2 artists being appointed. The artists have carried out design workshop consultation events with the

Moorfield schoolchildren and the residents group.

The artists ideas were presented in March of this year and now work is taking place to finalise the selected design with residents and the children. An Arts Council Lottery application will take place in June, which we hope will be successful.

The Council is meanwhile spending £35,000 improving some of the paving around the edge of the Square, providing new brighter street lighting, bollards to restrict vehicle access and improved drainage. The plan is that these improvements will give the artist a “clean canvass” to work on.

As a way of finding out more about **TIGER MOTH SQUARE** and it's residents local children were asked to write poems.... here are a few

ROCKET

*I run like a rocket
As fast as the wind
As fast as a light switch
As quick as a click
And so does my friend Darren
Jamie Sykes*

BIRDS

*Birds are colourful and bright
I love them
They're such a sight
Birds have wings
So they can fly
A they fly up to the sky
I have a bird called Fred
And she has a very soft head
Fred is a cokateal
My mum says
Lets have her for our meal!
Unknown Poet*

FRIENDSHIP ON THE SQUARE

*On the square there is friendship
But it usually ends in tears
People tripping over the concrete
People slipping on the litter
Can it be cleared?*

*Oh yes it can!
It has been cleared
Now we can
Smell the better air
Look at the things
Sit on the benches*

*Me and my friend
Can now play together
With no tripping or slipping
In the new clean square.
Roxanne Robinson*



Do you need help with

A leaflet for Council tenants explaining where you can get further information on help with paying your rent, claiming housing benefit and welfare benefits.

Please contact your Area Housing Office for a copy (details are in the back of this magazine).

HANDYPERSON ON THE VALLEY

Residents working through the Valley Resource Centre in Swinton, have secured the services of a handy person to work locally. The service helps elderly and disabled people who need small domestic jobs doing around their home. The service is available to homeowners and Council tenants, but only the elderly and disabled people will receive free work.

The project aims to assist vulnerable people remain independent and is funded from

the Salford and Trafford Health Authority, Salford Council and the Disabled Advice Service. It also addresses people's fears of employing someone they do not know to work in their home.

The type of repairs and services that the Handy person will provide include installing smoke alarms, fixing security chains on doors, clearing paths of weeds, changing light bulbs, installing shelves, moving furniture and decorating.





THE SALFORD 700

The City Council has embarked upon a consultation process about its Housing Strategy. Local people have volunteered to help out in developing our plans for housing in the City. Every three months our volunteers will be asked to comment on key issues affecting housing in the City. Their views and opinions will then

be fed back to the councillors and officers who put the Strategy together.

700 copies of the latest Housing Strategy document were sent to our volunteers plus many other interested parties including local builders, businesses, health workers and the Police. Our first mail out asked people what they thought of the strategy and asked for ideas for future discussions.

The first answers are now flooding back into the office and we welcome the forthright and honest views being expressed by our participants. We aim to have a summary of our responses in the next edition of Salford People.

In the meantime if you want to read our Housing Strategy or would like to be involved in the panel of volunteers please write to **SUE HILL, Principal Officer Marketing and PR, Salford People, FREEPOST, NWWW1358, Swinton M27 7BD.**



Our strategy document is available on request from Sue Hill 0161 925 1160

BEDSIT SAFETY

Salford Council Housing Services department recently set up a Houses in Multiple Occupation (HMO) registration scheme. This means that landlords of shared houses, bedsits or bed and breakfast accommodation must register their properties with us. For details of any exemptions and whether the scheme applies to you, please ring Frank Braganza



on 0161 925 1067. Landlords who do not register could be prosecuted and fined £2,500.

The City Council is using the information provided through registration to target information to HMO owners. This is a part of our ongoing commitment to work with landlords to improve housing conditions and protect the safety and welfare of tenants.

If you are a private tenant and need advice on any housing issue please contact the Housing Advice Centre at Southway in Eccles or telephone 787 8480.

"We have a team of officers to inspect privately rented properties. Whilst we hope to establish positive relationships with landlords in the City, we also have legal powers to take action where tenants are put at risk" said Councillor David Lancaster, Chairman of Salford's Housing Committee



Mobile Warden Service

This leaflet is aimed at older people who would like support to live independently in their own home. The service is available to people living in all types of properties, whether they rent or own their home. A unit is installed which links the customer to our 24 hour centre, so that we can respond to emergencies. Wardens can also make regular calls to people receiving the service.

The leaflet and further details, including charges, can be obtained from the Mobile Warden Supervisor on 0161 737 3822.



HAVING NEIGHBOUR PROBLEMS?



Rental Bond Scheme

Two leaflets are available, explaining to landlords and tenants how the scheme works. The scheme provides an alternative to tenants who can not afford to pay a cash deposit to rent a home in the private sector. The scheme is aimed at people on low incomes who are in housing need and looking to rent a property in specific areas of the City.

Please contact Dawn Brookes on 0161 925 1319 for a copy of either leaflet.



Sue Parry from the Salford Neighbour Dispute Service explains what mediation can offer Council tenants in the City.

Are you a Council tenant and have fallen out with your neighbour?

It may be a minor disagreement, a small thing you would like them to stop them doing or a huge fight and you wish that they would disappear off the face of the earth.

If you are having problems why not ring us?

The chances are that we have come across something like your situation before. We have been working on neighbour disputes for 8 years now and we usually see some kind of agreement reached at the end of mediation.

What does the Neighbour Dispute Service do?

We are a team of especially trained experienced mediators. We are independent volunteers and do not represent any authority.

We do not take sides and we do not judge or blame. We just try and help you work out a way you can live next to your neighbours and enjoy your home in peace.

How does it work?

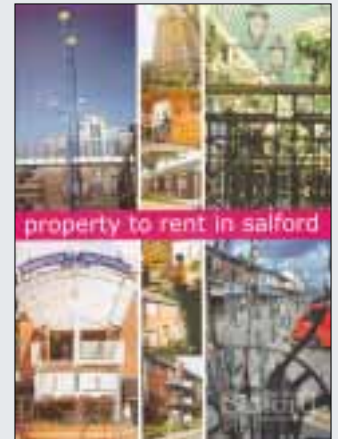
The service is free to City of Salford tenants and it is confidential and impartial. You can ring us yourself and we will arrange to come and see you in your home.

“After we have visited you in your home, if you agree we will ask your neighbour if they will see us. More often than not people will agree to let us visit them. Then, if both you and your neighbour agree, we will ask you to meet together around a table. Both sides will get a chance to be heard and you will both be asked what you would like to see happen to improve your future as neighbours.”

Contact: Jacqui, Sheila or Susan on 01204 386066 for details.



All Salford Neighbour Dispute Service mediators have been trained to help you.



LOOKING TO MOVE HOME? - CALL 0808 100 2347

The Council now has a freephone number for you to call for details of renting Council accommodation. The Property to Rent Hotline staff can supply details of flats, houses and specialist housing for older people. This Hotline has been set up for enquirers who are not currently Council tenants. Existing Council tenants should contact their Area Housing Office for a transfer application if they need to move.

Copies of our Property to Rent brochures are also now available at all our housing offices. These provide general information and contact details for renting properties.

USEFUL LIST OF COUNCIL SERVICES

- A**
- Adult education: Advice SETAS **745 7233**
 - Allotments **736 1749**
 - Archives **775 6543**
 - Arts and Leisure HQ **736 9448**
 - Alcohol team **745 7227**
 - Anti Poverty Unit (including Welfare Rights) **727 8235**
- B**
- Belmont Homeless Persons' Hostel **792 2040**
 - Benefits: Owner occupier/private tenant **793 3399**; Council tenants contact area housing office.
 - Births: See registration
 - Blocked gullies **793 2477**
 - Broughton Pool **792 2847**
 - Building regulations **793 3685**
 - Buile Hill Park **737 6277**
 - Business advice **793 2803**
- C**
- Car parks **793 3841**
 - Cemeteries (Agecroft/Weaste) **736 2512**
 - Cleavley athletics track **787 7107**
 - Community alcohol team **745 7227**
 - Community care information line **793 2222**
 - Community drug team: Eccles **787 7343**; Salford **745 7222**.
 - Community strategy **793 2569**
 - Competitive services **793 2560**
 - Compulsory purchase **793 3100**
 - Committee services **793 3003**
 - Community development and centres **793 2207 or 793 2214**
 - Council house sales (admin) **793 3096**
 - Council house sales (Housing) **737 0551 x1240**
 - Council tax **793 2699**
 - Councillors' secretarial assistant **793 3059**
 - Cycling **793 3849**
- D**
- Deaths - See registration
 - Debt advice: **727 8222**, Mon, Wed, Fri, 1pm-4pm
 - Dog wardens **925 1099**
 - Drains in private properties **925 1099**
 - Drains outside private properties **793 3812**: drains outside council housing, call local area housing office.
- E**
- Economic Development **793 3428/3407**
 - Education: Assistance with school uniforms/ footwear/ free school meals/welfare benefits **743 0744**
 - Emergency: Out of hours **794 8888**. All calls are recorded and all are held on a queueing system, please wait.
 - Environmental & consumer services: General enquiries **793 2010/3**; Salford North - Little Hulton, Boothstown, Swinton, Worsley and Walkden **793 2103/04/05**; Salford South: Cadishead, Irlam and Eccles **793 2054/ 2064/2068**; Salford East: Weaste, Pendleton, Ordsall, Broughton, Blackfriars **793 2112/ 2113/2114**.
 - European issues **793 3014**
- H**
- Hackney carriage licensing **793 3114/5**
 - Hospital social work teams: General medical **787 4820**; Ladywell **787 4062**; Mental health **773 9121**.
 - Housing Advice Centre **787 8480**
 - Housing offices: Blackfriars, **832 2212**; Eccles, **789 7721**; Irlam, **775 2626**; Little Hulton, **703 9453**; Ordsall, **872 4563**; Pendleton, **736 8931**; Precinct, **745 7745**; Swinton, **794 4711**; Worsley, **790 4568**.
 - Houses in multiple occupation **9251065**
 - HIV/AIDS - outreach worker **707 7188**
- I**
- Infectious diseases **793 2010**
 - Information centres - Broadwalk **745 9529**; Irlam **776 0280**.
 - Irlam Pool **775 4134**
- J**
- Job applications - personnel dept **793 3507**
- L**
- Lancastrian Halls **794 7466**
 - Land charges **793 3124**
 - Learning disability: Eccles **788 9107**; Inner city **877 4028**; Swinton **727 9516**.
 - Libraries: Boothstown, **799 6549**; Broadwalk, **737 5802**; Broughton, **792 6640**; Cadishead, **775 3457**; Charlestown, **736 1936**; Clifton, **794 1591**; Eccles, **789 1430/7731**;
- M**
- Main sewer faults **793 3809**
 - Markets: Eccles **789 3936**; Pendlebury **793 7654**; Salford **736 7845**.
 - Marriages: See registration
 - Mayorality **793 3064**
 - Mental Health - Prestwich Hospital social work team **773 9121**
 - Mobile Warden Service **737 0551 Ext 1008**
 - Museums: Lancashire Mining Museum **736 1832**; Ordsall Hall **872 0251**; Salford Museum and Art Gallery **736 2649**.
- N**
- North Salford School of Excellence **792 5969**
- O**
- Ordsall Project **876 5216**
- P**
- Pedestrian crossing and traffic signal faults **793 3842**
 - Parking problems **793 3843**
 - Peel Green/Swinton cemeteries and crematoria **789 1901**
 - Pembroke Halls **793 2435**
 - Pest Control **925 1099**
 - Planning enquiries **793 3684/6**
 - Promotions/tourism **736 9448**
 - Public relations and press office **793 3157**
 - Pot holes/highways defects: Salford South **793 2476**; Walkden/Worsley **793 3881**; Swinton **793 3884**; Salford North **793 3878**.
- Q**
- Quays Project Office **848 8601**
 - Quays Heritage Centre **876 5359**
- R**
- Recreation centres: Albert Park astroturf, **792 6076**; Broughton, **792 2375**; Cadishead, **775 7928**; Clarendon, **736 1494**; Eccles, **787 7107**;
- S**
- North Salford Centre of Excellence, **792 5969**;
 - Ordsall, **848 0646**;
 - Pendlebury, **793 1750**;
 - Walkden, **799 4585/790 2084**.
 - Refuse Collection **925 1099**
 - Registration of Births/ Deaths/Marriages **793 0077**
 - Road marking and signs **793 3884**
 - Road safety and school crossings **793 3807**
- S**
- Salford City Council Information Centre **745 9529**
 - Salford Museum and Art Gallery **736 2649**
 - Salford Pride litter teams **925 1099**
 - School admissions (education dept) **837 1736**
 - Sewer problems **793 3809**
 - Social Services: General enquiries **793 2240/41**;
 - Social & Health Care Information **793 2222**.
 - Social Services community teams: Broughton, **831 7484**; Clarendon/Weaste **789 5234**; Eccles **707 0704**; Irlam, **775 2626**; Worsley **799 4404**;
 - Pendleton/ Precinct **743 1000**; Swinton, **793 2399**;
 - Special Services Section (Libraries) **792 0190**
 - Sports development **736 9448**
 - Street cleansing **925 1099**
 - Street lighting faults **793 3871**
 - Student grants and awards (education dept) **837 1722**
- T**
- Tourism **793 3403**
 - Town twinning **793 3139**
 - Traffic management **793 3840**
- V**
- Viewpoint Gallery/Artbase **775 6543**
 - Voluntary sector (grants) **793 3416**
- W**
- Water Sports Centre **877 7252**
 - Welfare rights: Advice **727 2418**, Mon, Tue, Thur, Fri, 10am-noon
 - Work permits for children **743 0744**
 - Worsley Court House **790 4584**
 - Worsley Pool **790 2084**



SWITCHBOARD (0161) 794 4711

VOLUNTARY SECTOR

A Salford People service to help put you in touch with voluntary groups across the city

Voluntary sector is a free service for voluntary organisations across the city. Send details to Salford People, FREEPOST NWW 1358, Swinton, M27 7BD. You don't even need a stamp!

Please send me a free copy of the 'Directory of Volunteering Opportunities

tick box

Name

Address

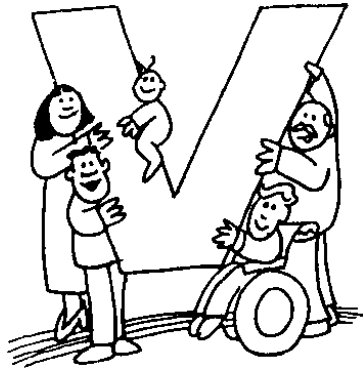
.....

.....

.....

Tel

Please return this coupon to:
Salford People, FREEPOST
NWW1358, Swinton M27 7BD.



Get in touch with CVS!

If you're a voluntary group in Salford, you should get in touch with CVS!

Salford Council for Voluntary Service provide a bi-monthly newsletter for voluntary and community groups, information on funding, training, health and community care, and a volunteer bureau.

Contact them at: 12 Irwell Place, Eccles M30 0FN
Salford CVS: **787 7795**
Salford Volunteer Bureau:
707 7067

Salford Witness Support Service

...are looking for volunteers to support witnesses before, during and after court appearances.

Volunteers help witnesses to allay their fears, accompany them into court, support them after their court appearance and provide on-going emotional support.

Salford Urban Mission

...are looking for volunteers for areas of Broughton/Seedley and Langworthy/Charlestown for clerical duties such as writing letters, filling in forms, and for organising training days, refreshments, working alongside staff and volunteers on youth nights, providing games, activities and childcare.

Friends of Blackleach

...are looking for volunteers to offer support at the Country Park in Walked to members and help update the Friends' mailing list. Volunteers are also needed to help with conservation work such as tree planting, hedgelaying, fencing and general maintenance.

Oakwood High Youth Club

...need volunteers for their After School Clubs which are held 2.30pm-4.30pm, and youth clubs 7-9pm Wed/Thurs. Also during school holidays and on residential weekends they need helpers to provide a variety of social, educational and recreational activities for young people who have special needs and their friends.

Contact Salford Volunteer Bureau direct on **0161 707 7067**, Minicom **0161 789 7992**, visit or write to us at 12 Irwell Place, Eccles, M30 0FN, or use the coupon below to contact us using the Salford People Freepost address.

COMMUNITY COMMITTEES JUNE / JULY

7 Jun	Higher Kersal Aguda Centre	7.30pm
8 Jun	Claremont/Weaste Hope High School	7pm
22 Jun	Langworthy/Pendleton Tech Train	6pm
22 Jun	Swinton Salford Civic Centre	7pm
29 Jun	Ordsall No venue as yet	7pm
5 Jul	Charlestown Muirhead Court	6pm
7 Jul	Lower Kersal St Aiden's Church	7pm
12 Jul	Little Hulton Little Hulton Community School	6pm
15 Jul	Irlam/Cadishead Irlam Community Centre	7pm
20 Jul	Broughton/Blackfriars Venue to come	7pm
27 Jul	Langworthy/Pendleton Tech Train	6pm
27 Jul	Eccles Eccles Library	7pm
28 Jul	(Date to be confirmed) Worsley/Walkden Venue to come	7pm



SALFORD

4 Trafford Rd, off Broadway,
Ordsall **848 8865** Minicom: 877 6616

PENDLETON

Pendleton House, Broughton Rd **736 4983**

SWINTON AND PENDLEBURY

95 Chorley Rd **794 5028**

WORSLEY

1 Memorial Rd, Walkden **790 5489**

ECCLES

40/44 Church St, M30 0DF **789 1540**

Eccles Home Visiting Scheme **789 4467**

HOPE HOSPITAL

Stott Lane, Salford M6 8HD **787 4713**

IRLAM AND CADISHEAD

595 Liverpool Rd **775 1849**

Irlam and Cadishead Home Visiting Scheme

777 8080

LOWER BROUGHTON

Lucy St, off Great Clowes St **792 1609**

COULD YOU FOSTER?

We need:

Short break foster carers to look after children for occasional weekends

Short term foster carers to look after children full-time until things are sorted

Long term fostering means caring for older children until they are grown up

Don't rule yourself out - you don't need to be married, employed, or a parent already

Salford Family Placement Team

RING 799 1762

City of Salford
Community & Social Services



City of Salford

SALFORD ADVANCED MOTORISTS

DO YOU ENJOY DRIVING

Do you consider yourself an experienced driver?

Would you like the opportunity to measure your driving ability and take the Advanced Driving Test?

ADVANCED DRIVER TRAINING COURSES THROUGHOUT THE YEAR

For further details contact
The City of Salford
Road Safety Unit
Tel: 0161 793 3807
Interested in advanced motorcycle then contact
Joanne or Brian
Tel: 0161 775 7185



KNOW YOUR COUNCILLOR

COUNCILLORS are elected to represent their communities, and so are here to help you with any local issues you may want to raise.

Three councillors represent each of Salford's 20 wards, and a picture of each appears below along with their phone number.

All councillors hold advice

surgeries. For more details of surgeries in your area, call your local councillor.

Or you can call members' secretary Elaine Watts on 793 3059, or write to the councillors for your area c/o Salford People, **FREEPOST NWW1358**, Swinton, M27 7BD. You don't even need a stamp!

BARTON



Brian Carter 788 0091
Ken Memory 789 5902
Bernice Collins 707 4616

BLACKFRIARS



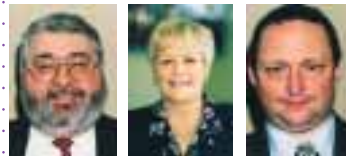
John Hincks 736 7908
Joe Murphy 736 4771
Ben Wallsworth 707 5754

BROUGHTON



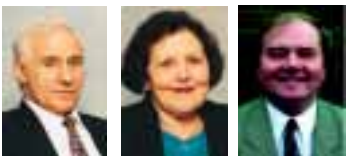
Jim King 792 7824
John Merry 661 7101
Bernard Murphy 792 3628

CADISHEAD



Arnold Holt 775 9715
Christine Hudson 775 4378
James Hunt 775 9859

CLAREMONT



Peter Grimshaw 737 7714
Barbara Miller 793 0425
Norman Owen 737 6997

ECCLES



Ernest Johnson 789 4229
Margaret Morris 950 0847
Eddie Sheehy 707 3221

IRLAM



Joe Kean 775 7821
Roger Jones 775 1261
Roger Lightow 775 9589

KERSAL



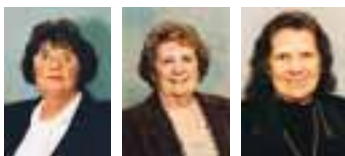
Peter Connor 792 8001
George Wilson 792 8159
Shaun Howell 775 9489

LANGWORTHY



Paul Brighthouse 737 4295
Andrew Salmon 745 7608
Andrew Leaston 736 8266

LITTLE HULTON



Doris Fernandez 799 3510
Alice Smyth 799 3077
Marion Wordsworth 790 7378

ORDSALL



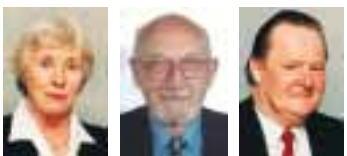
Sue Miller 792 3841
Ken Murray 737 6653
Syd Turner 872 1959

PENDLETON



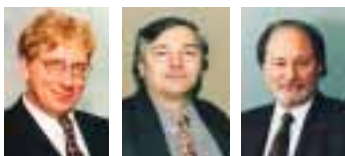
Joe Holt 736 2122
James Hulmes 792 9836
John Warmisham 661 1834

PENDLEBURY



Maureen Lea 737 4988
Eric Burgoyne 790 0489
Barry Warner 793 5545

SWINTON NORTH



Derek Antrobus 793 7713
James Dawson 793 5014
Bill Hinds 794 8783

SWINTON SOUTH



Dougie Daniels 789 1620
Bernard Lea 737 4905
Keith Mann 775 6556

WALKDEN NORTH



Elizabeth Payne 799 9538
Bernard Pennington 790 4181
Vincent Devine 799 3291

WALKDEN SOUTH



Val Burgoyne 790 0484
Audrey Judge 799 3685
Stan Witkowski 799 5924

WEASTE & SEEDLEY



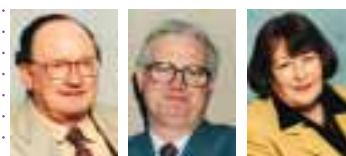
Alan Clague 737 6915
David Jolley 789 2280
Tony Ullman 792 7413

WINTON



David Eglin 787 8104
David Lancaster 789 4723
Vincent Prior 775 3476

WORSLEY AND BOOTHSTOWN



Bob Boyd 799 2010
Kerry Holt 790 3401
Brenda Roberts 790 1537

The fun goes



Here's just a taster of what's ON in Salford this summer...

ON IN JUNE

- 12 Agecroft Rowing Regatta at Salford Quays
- 12 Really Sensible Storytime at Salford Museum and Art Gallery
- 12 Car Boot Sale at Royal Manchester Children's Hospital
- 12 Family Fun Day in Buile Hill Park
- 13 Family Fun Day in Buile Hill Park
- 13 Flight Path Estate closes at Viewpoint Photography Gallery
- 14 See Kurt Jackson's Carnsew at the Lancashire Mining Museum
- 16 Walk around Boothstown and the Chaddock Level
- 19 Greater Manchester Youth Games at The Armitage Centre, Fallowfield
- 20 Greater Manchester Youth Games at The Armitage Centre, Fallowfield
- 20 Multi-cultural Arts Day at Calderwood Community Centre
- 20 Boothstown Festival
- 22 Salford Schools Arts Festival begins
- 22 Musical Premiere at Pembroke Hall
- 23 Musical Premiere at Pembroke Hall
- 24 Musical Magic at Pembroke Hall
- 25 Last chance to see Civic Centre at Viewpoint Photography Gallery
- 27 Summer Stroll around Kersal Vale
- 27 Cycle 'n' Safety Fair in Buile Hill Park
- 29 Pamela Crabtree exhibition opens at Salford Museum and Art Gallery
- 29 Drama and Dance in Buile Hill Park
- 30 Last day of Shopping in Salford exhibition at Salford Quays Heritage Centre
- 30 Orchid Walk around Blackleach Country Park
- 30 Millennium Music in Buile Hill Park
- 4 Last day of Artbase Exposed at Viewpoint Photography Gallery
- 5 The Classic Slum starts at Salford Quays Heritage Centre
- 7 Tree Walk around Buile Hill Park
- 8 Catch Between There and Now at Viewpoint Photography Gallery
- 10 Leisurely Orienteering around Kersal Vale
- 11 Waterways of Walkden and Worsley
- 11 Charity Raft Race at Salford Quays
- 11 Speedy Sports weekend in Buile Hill Park
- 11 Flower Festival in Buile Hill Park
- 14 Discover Salford - Salford Quays
- 17 Speedy Sports weekend in Buile Hill Park
- 18 Quays Breeze Triathlon at Salford Quays
- 18 Lowry III finishes at Salford Museum and Art Gallery
- 18 Speedy Sports weekend in Buile Hill Park
- 18 Celebrating 150 Years in Flowers at Worsley Court House
- 18 Guided Walk through Worsley
- 19 Salford Young People's University opens
- 19 Worsley and its Court House
- 20 School Painting Competition at Worsley Court House
- 21 Lowry IV begins at Salford Museum and Art Gallery
- 21 The Importance of Being Earnest at Worsley Court House
- 22 Art and Craft Workshop and Exhibition at Worsley Court House
- 23 School Band Showcase at Worsley Court House
- 24 All Stitched Up finishes at Ordsall Hall Museum
- 24 Stax of Soul Special at Pembroke Hall
- 24 Beesley Green Fun Day
- 24 Summer Fair at Halton Bank
- 25 Kurt Jackson's Carnsew ends at the Lancashire Mining Museum
- 25 Craft Fair at Worsley Court House
- 25 Family Fun Day in Victoria Park

- 25 Discover Salford - Halls of Worsley
- 25 Last chance to see Civic Centre at Viewpoint Photography Gallery
- 25 Brookhouse Festival
- 25 Wild About Gardens at Clifton Country Park
- 26 Really Sensible Show ends at Salford Museum and Art Gallery
- 26 First day of Speedy Sports every week day in Buile Hill Park
- 26 First chance to Go Wild at Salford Libraries
- 26 First day of summer sports at Agora playspaces across Salford
- 26 Last day of The After-Show Party at Salford Museum and Art Gallery
- 26 Back to the Good Old Days at Worsley Court House
- 26 Sport 'n' Splash starts at Fit City
- 27 Back to the Good Old Days at Worsley Court House
- 27 Lancashire Humour at Midwood Hall
- 27 Design For Life at Salford Museum and Art Gallery
- 28 Cake Craft at Worsley Court House
- 28 Chimney Pot Park Fun Day
- 29 Design For Life at Salford Museum and Art Gallery
- 30 Worsley Court House Chase
- 30 Feast Your Eyes starts at Ordsall Hall Museum
- 31 Last day of Glorious Graphics at Swinton Library Art Gallery
- 30 Final Spring Cleaning and Washing Day at Irlam Heritage Unit

To find out more about all the events on this page - and lots more - get ON in Salford.

ON in Salford is a free, bi-monthly what's on magazine that's bursting with exciting events, exhibitions, talks, historic walks, music, dance and drama, sporting activities, days out and community events. The bumper July/August issue is out now.

To receive your free copy, just complete this coupon, pop it in an envelope and return it to the FREEPOST address below. You don't even need a stamp. Or phone Andrew Roach on 0161 736 9448 today.

Yes, I would like to join the free ON in Salford mailing list.

Title First Name

Surname

Street

Town

City Postcode

Telephone

I am particularly interested in (tick all that apply):

Family Events	<input type="checkbox"/>	Exhibitions	<input type="checkbox"/>	Other (please specify)
Artbase	<input type="checkbox"/>	Theatre	<input type="checkbox"/>	
Children's Activities	<input type="checkbox"/>	Sports	<input type="checkbox"/>	
Tea Dances	<input type="checkbox"/>	Cabaret Evenings	<input type="checkbox"/>	
Walks	<input type="checkbox"/>	Talks	<input type="checkbox"/>	
Classical Music	<input type="checkbox"/>	Heritage	<input type="checkbox"/>	

Age: Under 18 18-24
 25-29 30-40 41-49
 50-64 65+

Return to: Andrew Roach
 FREEPOST MR10203
 Marketing & Visitor Services
 Salford Education & Leisure Directorate
 Vulcan House
 Albion Place
 SALFORD
 M5 9DZ